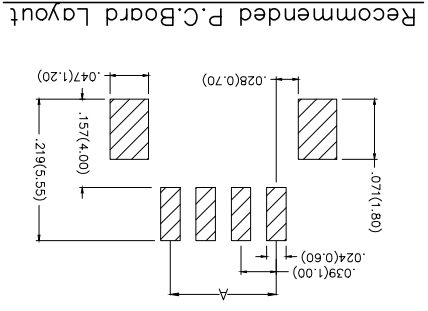
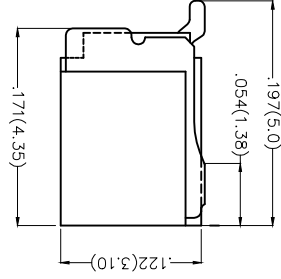
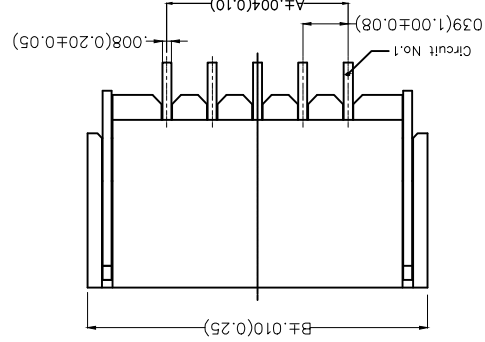
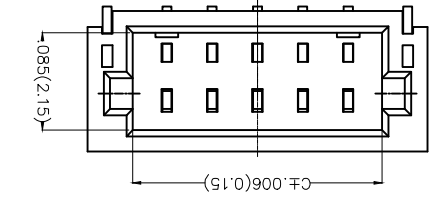


REV	LOCATIONS	DESCRIPTION	DATE	REVISER	APPD

Electrical  
 Current Rating: 1A AC(rms)/DC  
 Voltage Rating: 50V AC(rms)/DC  
 Contact Resistance: 20 mΩ Max  
 Insulation Resistance: 100 MΩ MIN  
 Withstanding Voltage: 500V AC r.m.s  
 Temperature Range—Operating: -25°C~+85°C  
 Material and Plating  
 Housing: PA9T (UL 94V-0)  
 Contact Pin: Brass/ Tin plated  
 Solder Tab: Copper alloy/ Tin plated



Recommended P.C.Board Layout


Ordering Information

1	Category	FWF-Water
2	Series Number	100-Pitch1.0mm
3	Distinction No.	01
4	Row Option	Single Row
5	Circuits	XX
6	Entry Angle	B-90° Angle
7	Plating	2-Tin Plated
8	Material-Resin	4-PA9T
9	Color-Resin	W5-White
10	Packaging	M-Reel

THIRD ANGLE PROJECTION	DESIGN UNITS	INCH (metric)	X.XX±.008(0.20)	X.XX±.006(0.15)	X.XX±.004(0.10)	
	SCALE	A4	5:1			
GENERAL TOLERANCES (UNLESS SPECIFIED)	DATE	28/JUN/13	CHECKED BY	JACOB	DATE	28/JUN/13
	DATE	28/JUN/13	DRAWN BY	CHERRY	DATE	28/JUN/13
APPROVE BY	FRANK	DATE	28/JUN/13	DATE	28/JUN/13	THIS DRAWING CONTAINS INFORMATION THAT IS PROPRIETARY TO TXGA INDUSTRIAL ELECTRONICS(SZ)CO.,LTD AND SHOULD NOT BE USED WITHOUT WRITTEN PERMISSION
PART NO.	FWF10001-SXXB24WSM	ITEM NO.	FWF10001	TITLE	Wire to Board (Water) Pitch 1.0mm 90° Angle (SMT)	REV 0 SHEET NO. 1/3
TXGA	Leader Of Industry					

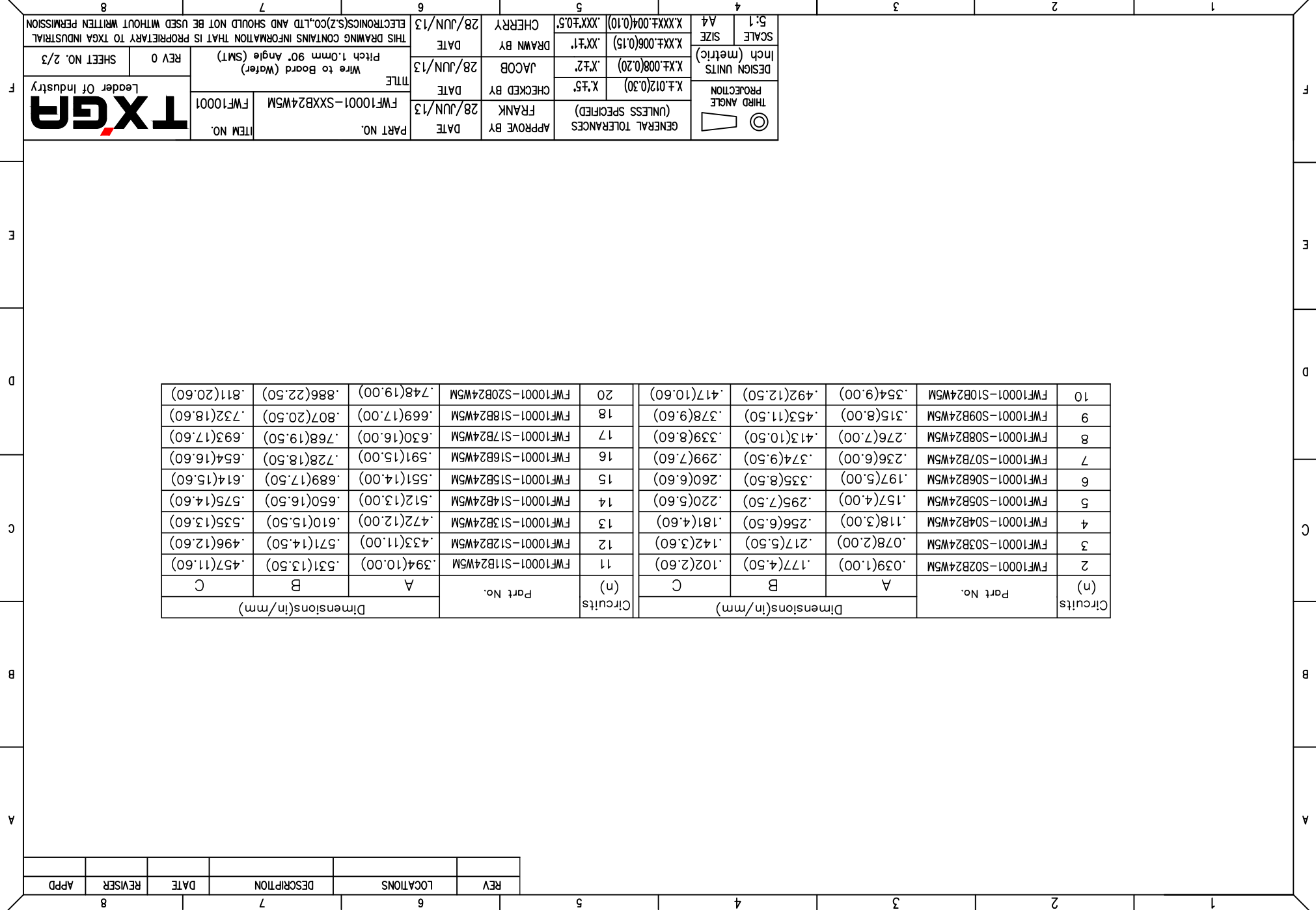
REV	LOCATIONS	DESCRIPTION	DATE	REVISER	APPD

Circuits	Part No.	Dimensions(in/mm)							
		A	B	C					
2	FWF10001-S02B24W5M	.039(1.00)	.177(4.50)	.102(2.60)					
3	FWF10001-S03B24W5M	.078(2.00)	.217(5.50)	.142(3.60)					
4	FWF10001-S04B24W5M	.118(3.00)	.256(6.50)	.181(4.60)					
5	FWF10001-S05B24W5M	.157(4.00)	.295(7.50)	.220(5.60)					
6	FWF10001-S06B24W5M	.197(5.00)	.335(8.50)	.260(6.60)					
7	FWF10001-S07B24W5M	.236(6.00)	.374(9.50)	.299(7.60)					
8	FWF10001-S08B24W5M	.276(7.00)	.413(10.50)	.339(8.60)					
9	FWF10001-S09B24W5M	.315(8.00)	.453(11.50)	.378(9.60)					
10	FWF10001-S10B24W5M	.354(9.00)	.492(12.50)	.417(10.60)					
Circuits	Part No.	A	B	C	(n)	FWF10001-S11B24W5M	.394(10.00)	.531(13.50)	.457(11.60)
						FWF10001-S12B24W5M	.433(11.00)	.571(14.50)	.496(12.60)
						FWF10001-S13B24W5M	.472(12.00)	.610(15.50)	.535(13.60)
						FWF10001-S14B24W5M	.512(13.00)	.650(16.50)	.575(14.60)
						FWF10001-S15B24W5M	.551(14.00)	.689(17.50)	.614(15.60)
						FWF10001-S16B24W5M	.591(15.00)	.728(18.50)	.654(16.60)
						FWF10001-S17B24W5M	.630(16.00)	.768(19.50)	.693(17.60)
						FWF10001-S18B24W5M	.669(17.00)	.807(20.50)	.732(18.60)
						FWF10001-S20B24W5M	.748(19.00)	.886(22.50)	.811(20.60)

 THIRD ANGLE PROJECTION	DESIGN UNITS	X.XX±.008(0.20)	X.XX±.006(0.15)	X.XX±.004(0.10)	X.XX±.004(0.10)
	Inch (metric)	.X±.2	.XX±.1	.XXX±.05	.XXX±.05
SCALE	SIZE	A4	A4	A4	A4
5:1	GENERAL TOLERANCES (UNLESS SPECIFIED) APPROVE BY FRANK DATE 28/JUN/13 CHECKED BY JACOB DATE 28/JUN/13 DRAWN BY CHERRY DATE 28/JUN/13 THIS DRAWING CONTAINS INFORMATION THAT IS PROPRIETARY TO TXGA INDUSTRIAL ELECTRONICS(SZ)CO.,LTD AND SHOULD NOT BE USED WITHOUT WRITTEN PERMISSION				

PART NO. FWF10001-SXXB24W5M  
 ITEM NO. FWF10001  
**TXGA**  
 Leader Of Industry

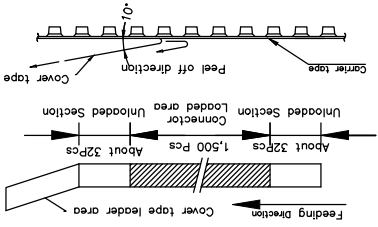
TITLE FWF10001-SXXB24W5M  
 Wire to Board (Water Pitch 1.0mm 90° Angle (SMT))  
 REV 0 SHEET NO. 2/3



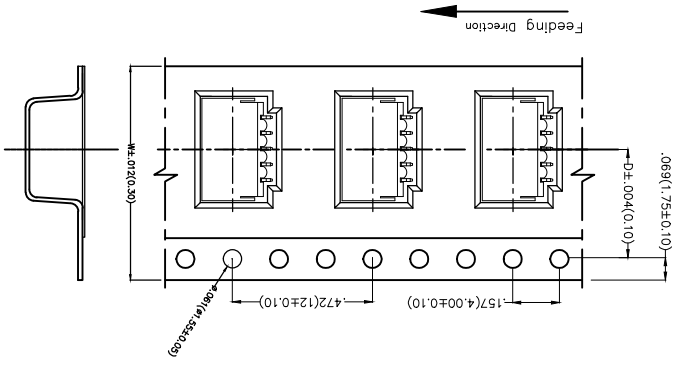
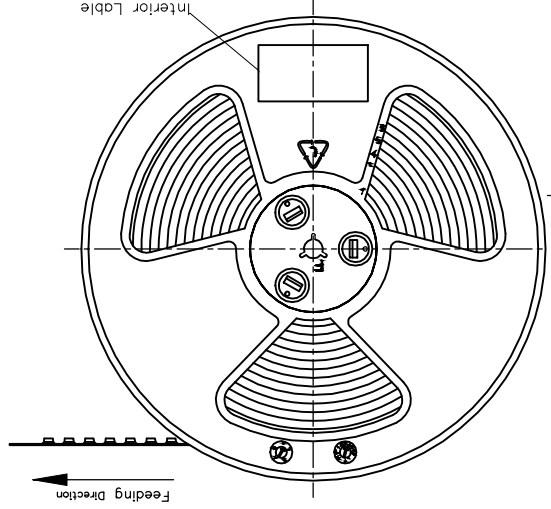
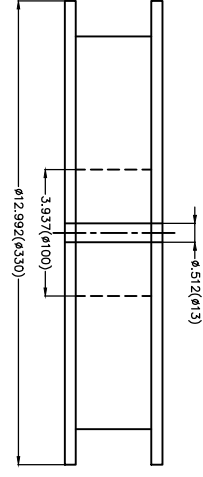
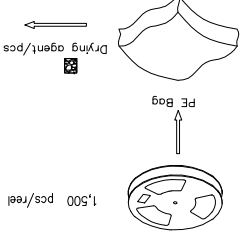
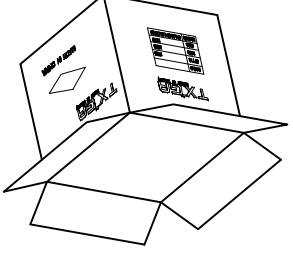
REV	LOCATIONS	DESCRIPTION	DATE	REVISER	APPD

Note:

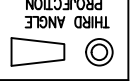
- 10 sprocket hole cumulative tolerance±0.2
- Carrier camber is within 1.0mm in 250mm
- Material: White Conductive polystyrene Alloy 100% recyclable
- All dimensions meet EIA-481-3 requirements
- Peel off force of cover tape&carrier tape:20g~130g(0.2N~1.3N)
- Component load per 13" reel: 1,500 pcs



Circuits	Dimensions(in/mm)	
	D	W
(n)	D	W
2	.295(7.50)	.630(16.00)
3	.295(7.50)	.630(16.00)
4	.295(7.50)	.630(16.00)
5	.295(7.50)	.630(16.00)
6	.295(7.50)	.630(16.00)
7	.295(7.50)	.630(16.00)
8	.295(7.50)	.630(16.00)
9	.295(7.50)	.630(16.00)
10	.453(11.50)	.945(24.00)
11	.453(11.50)	.945(24.00)



GENERAL TOLERANCES (UNLESS SPECIFIED)	DATE	APPROVE BY	DATE	PART NO.	ITEM NO.
X.±.012(0.30)	28/JUN/13	FRANK	28/JUN/13	FWF10001-SXXB24WM	FWF10001
X.XX±.008(0.20)	DATE	CHECKED BY	DATE	TITLE	
X.XX±.006(0.15)	28/JUN/13	JACOB	28/JUN/13	Wire to Board (Water)	
X.XX±.004(0.10)	DATE	DRAWN BY	DATE	Pitch 1.0mm 90° Angle (SMT)	REV 0
X.XX±.05	28/JUN/13	CHEERY	28/JUN/13	THIS DRAWING CONTAINS INFORMATION THAT IS PROPRIETARY TO TXGA INDUSTRIAL ELECTRONICS(SZ)CO.,LTD AND SHOULD NOT BE USED WITHOUT WRITTEN PERMISSION	SHEET NO. 3/3



DESIGN UNITS  
Inch (metric)

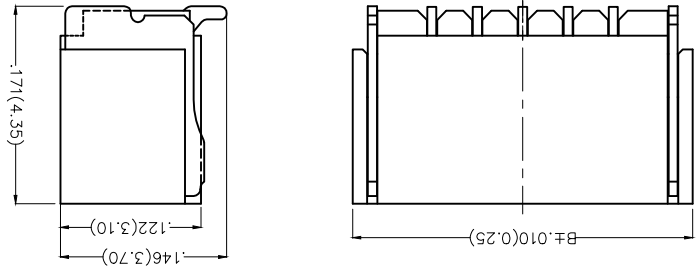
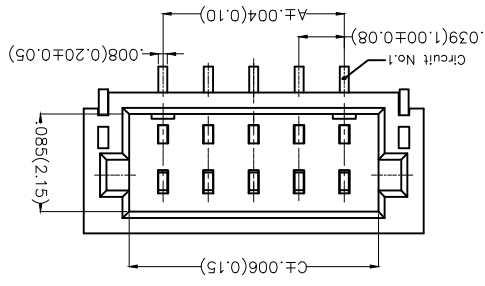
SCALE  
A4  
5:1



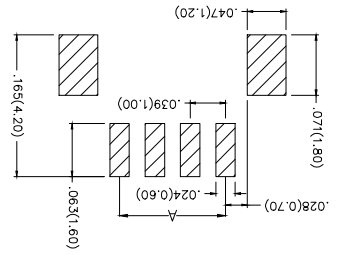
A B C D E F  
1 2 3 4 5 6 7 8

REV	LOCATIONS	DESCRIPTION	DATE	REVISER	APPD

**Electrical**  
 Current Rating: 1A AC(rms)/DC  
 Voltage Rating: 50V AC(rms)/DC  
 Contact Resistance: 20 mΩ Max  
 Insulation Resistance: 100 MΩ MIN  
 Withstanding Voltage: 500V AC r.m.s  
 Temperature Range-Operating: -25°C~+85°C  
 Material and Plating  
 Housing: PA9T (UL 94V-0)  
 Contact Pin: Brass/ Tin plated  
 Solder Tab: Copper alloy/ Tin plated



**Recommended P.C.Board Layout**



**Ordering Information**

FWF 100 02 - S XX S 2 4 W5 M  
 1 2 3 4 5 6 7 8 9 10

- 1 Category FWF-Wafer
- 2 Series Number 100-Pitch1.0mm
- 3 Distinction No. 02
- 4 Row Option Single Row
- 5 Circuits XX
- 6 Entry Angle S-180° Vertical
- 7 Plating 2-Tin Plated
- 8 Material-Resin 4-PA9T
- 9 Color-Resin W5-White
- 10 Packaging M-Reel

GENERAL TOLERANCES (UNLESS SPECIFIED)	DATE	APPROVE BY	PART NO.	ITEM NO.
X.±.012(0.30)	28/JUN/13	FRANK	FWF10002-SXXS24W5M	
X.±.5	DATE	CHECKED BY	TITLE	
X.±.2	28/JUN/13	JACOB	Wire to Board (Wafer)	
X.XX±.1	DATE	DRAWN BY	Pitch 1.0mm 180° Vertical (SMT)	
X.XX±.006(0.15)	28/JUN/13	CHERRY		
X.XX±.004(0.10)				
A4				
5:1				
SCALE				
DESIGN UNITS				
Inch (metric)				
THIRD ANGLE PROJECTION				
THIS DRAWING CONTAINS INFORMATION THAT IS PROPRIETARY TO TXGA INDUSTRIAL ELECTRONICS(SZ)CO.,LTD AND SHOULD NOT BE USED WITHOUT WRITTEN PERMISSION				



1 2 3 4 5 6 7 8

A B C D E F

A B C D E F

A B C D E F


A B C D E F

A B C D E F

1 2 3 4 5 6 7 8

REV	LOCATIONS	DESCRIPTION	DATE	REVISER	APPD

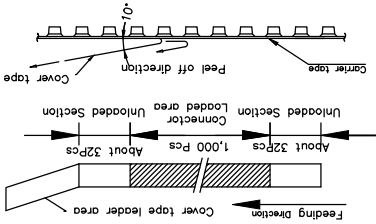
Circuits (n)	Part No.	Dimensions(in/mm)		
		A	B	C
2	FWF10002-S02S24W5M	.039(1.00)	.177(4.50)	.102(2.60)
3	FWF10002-S03S24W5M	.078(2.00)	.217(5.50)	.142(3.60)
4	FWF10002-S04S24W5M	.118(3.00)	.256(6.50)	.181(4.60)
5	FWF10002-S05S24W5M	.157(4.00)	.295(7.50)	.220(5.60)
6	FWF10002-S06S24W5M	.197(5.00)	.335(8.50)	.260(6.60)
7	FWF10002-S07S24W5M	.236(6.00)	.374(9.50)	.299(7.60)
8	FWF10002-S08S24W5M	.276(7.00)	.413(10.50)	.339(8.60)
9	FWF10002-S09S24W5M	.315(8.00)	.453(11.50)	.378(9.60)
10	FWF10002-S10S24W5M	.354(9.00)	.492(12.50)	.417(10.60)
Circuits (n)	Part No.	Dimensions(in/mm)		
		A	B	C
11	FWF10002-S11S24W5M	.394(10.00)	.531(13.50)	.457(11.60)
12	FWF10002-S12S24W5M	.433(11.00)	.571(14.50)	.496(12.60)
13	FWF10002-S13S24W5M	.472(12.00)	.610(15.50)	.535(13.60)
14	FWF10002-S14S24W5M	.512(13.00)	.650(16.50)	.575(14.60)
15	FWF10002-S15S24W5M	.551(14.00)	.689(17.50)	.614(15.60)
16	FWF10002-S16S24W5M	.591(15.00)	.728(18.50)	.654(16.60)
17	FWF10002-S17S24W5M	.630(16.00)	.768(19.50)	.693(17.60)
18	FWF10002-S18S24W5M	.669(17.00)	.807(20.50)	.732(18.60)
20	FWF10002-S20S24W5M	.748(19.00)	.886(22.50)	.811(20.60)

THIRD ANGLE PROJECTION 	DESIGN UNITS	X.±.008(0.20)	X.±.7	JACOB	28/JUN/13	Wire to Board (Water) Pitch 1.0mm 180° Vertical (SMT)	REV 0	SHEET NO. 2/3
	SCALE	X.XX±.006(0.15)	.XX±1.	DRAWN BY	DATE	THIS DRAWING CONTAINS INFORMATION THAT IS PROPRIETARY TO TXGA INDUSTRIAL ELECTRONICS(SZ)CO.,LTD AND SHOULD NOT BE USED WITHOUT WRITTEN PERMISSION		
GENERAL TOLERANCES (UNLESS SPECIFIED)	APPROVE BY	FRANK	28/JUN/13	PART NO.	FWF10002-SXXS24W5M	ITEM NO.	TXGA Leader Of Industry	
	CHECKED BY	X.±.5	28/JUN/13	DATE	FWF10002	F		
		X.±.012(0.30)				E		
		X.XX±.004(0.10)	.XXX±0.5	CHERRY	28/JUN/13	D		
		X.XX±.004(0.10)	.XXX±0.5			C		
						B		
						A		

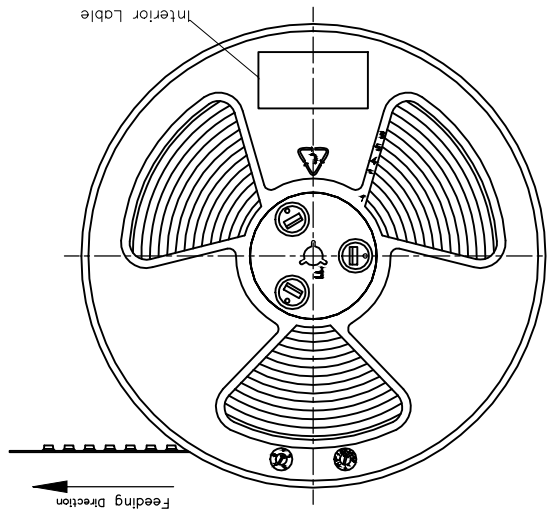
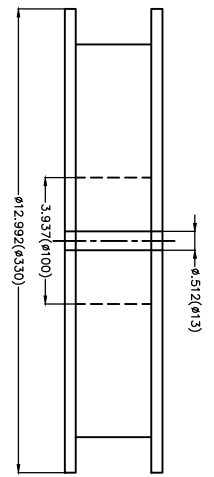
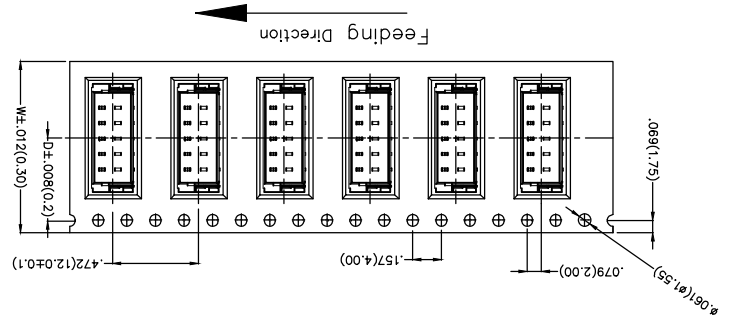
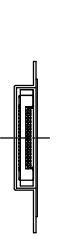
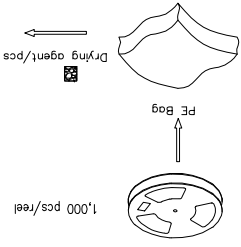
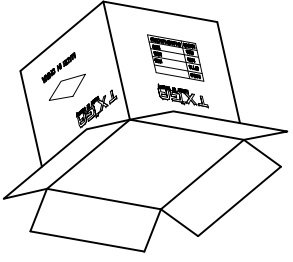
REV	LOCATIONS	DESCRIPTION	DATE	REWISER	APPD

Note:

- 10 sprocket hole cumulative tolerance±0.2
- Carrier camber is within 1.0mm in 250mm
- Material: White Conductive polystyrene Alloy 100% recyclable
- All dimensions meet EIA-481-3 requirements
- Peel off force of cover tape&carrier tape:20g~130g(0.2N~1.3N)
- Component load per 13" reel: 1,000 pcs



Circuits	Dimensions(in/mm)	
	D	W
(n)	D	W
2	.295(7.50)	.630(16.00)
3	.295(7.50)	.630(16.00)
4	.295(7.50)	.630(16.00)
5	.295(7.50)	.630(16.00)
6	.295(7.50)	.630(16.00)
7	.295(7.50)	.630(16.00)
8	.295(7.50)	.630(16.00)
9	.295(7.50)	.630(16.00)
10	.453(11.50)	.945(24.00)
11	.453(11.50)	.945(24.00)



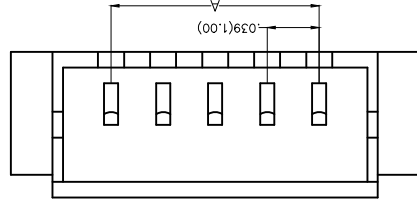
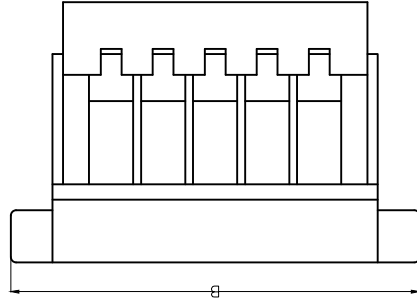
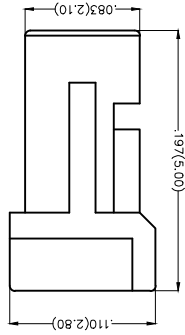
SCALE	SIZE	DESIGN UNITS	THIRD ANGLE PROJECTION	GENERAL TOLERANCES (UNLESS SPECIFIED)		DATE	APPROVE BY	DATE	PART NO.	ITEM NO.
				FRAK	CHKD					
5:1	A4	X.XX±.008(0.20)	X.XX±.012(0.30)	X.XX±.006(0.15)	X.XX±.004(0.10)	28/JUN/13	FRANK	28/JUN/13	FWF10002-SXXS24WSM	FWF10002
		X.XX±.008(0.20)	X.XX±.012(0.30)	X.XX±.006(0.15)	X.XX±.004(0.10)	28/JUN/13	JACOB	28/JUN/13	FWF10002-SXXS24WSM	FWF10002
		X.XX±.006(0.15)	X.XX±.012(0.30)	X.XX±.006(0.15)	X.XX±.004(0.10)	28/JUN/13	CHERRY	28/JUN/13	FWF10002-SXXS24WSM	FWF10002

TXGA  
Leader Of Industry

THIS DRAWING CONTAINS INFORMATION THAT IS PROPRIETARY TO TXGA INDUSTRIAL ELECTRONICS(SZ)CO.,LTD AND SHOULD NOT BE USED WITHOUT WRITTEN PERMISSION

REV	LOCATIONS	DESCRIPTION	DATE	REVISER	APPD

Electrical  
 Temperature Range—Operating: -25°C~+85°C  
 Material  
 Housing: PA66 (UL 94V-0)  
 Applicable Terminal: FT10001  
 Mates With: WF10001, WF10002 Series



Part No.	Dimensions(n/mm)	Circuits	Part No.		Dimensions(n/mm)
			A	B	
FHG10001-S02MZW1B	.039(1.00)	.197(5.00)	A	B	(n)
FHG10001-S03MZW1B	.078(2.00)	.236(6.00)	A	B	(n)
FHG10001-S04MZW1B	.118(3.00)	.276(7.00)	A	B	(n)
FHG10001-S05MZW1B	.157(4.00)	.315(8.00)	A	B	(n)
FHG10001-S06MZW1B	.197(5.00)	.354(9.00)	A	B	(n)
FHG10001-S07MZW1B	.236(6.00)	.394(10.00)	A	B	(n)
FHG10001-S08MZW1B	.276(7.00)	.433(11.00)	A	B	(n)
FHG10001-S09MZW1B	.315(8.00)	.472(12.00)	A	B	(n)
FHG10001-S10MZW1B	.354(9.00)	.512(13.00)	A	B	(n)
FHG10001-S11MZW1B	.394(10.00)	.551(14.00)	A	B	(n)
FHG10001-S12MZW1B	.433(11.00)	.591(15.00)	A	B	(n)
FHG10001-S13MZW1B	.472(12.00)	.630(16.00)	A	B	(n)
FHG10001-S14MZW1B	.512(13.00)	.669(17.00)	A	B	(n)
FHG10001-S15MZW1B	.551(14.00)	.709(18.00)	A	B	(n)
FHG10001-S16MZW1B	.591(15.00)	.748(19.00)	A	B	(n)
FHG10001-S17MZW1B	.630(16.00)	.787(20.00)	A	B	(n)
FHG10001-S18MZW1B	.669(17.00)	.827(21.00)	A	B	(n)
FHG10001-S20MZW1B	.748(19.00)	.906(23.00)	A	B	(n)

### Ordering Information

FHG 100 01 - S XX M 2 W1 B  
 1 2 3 4 5 6 7 8 9

1 | Category | FHG—Housing  
 2 | Series Number | 100—Pitch1.0mm  
 3 | Distinction No. | 01  
 4 | Row Option | Single Row  
 5 | Circuits | XX  
 6 | Entry Type | M—Male  
 7 | Material—Resin | 2—PA66  
 8 | Color—Resin | W1—White  
 9 | Packaging | B—PE Bag



GENERAL TOLERANCES  
 (UNLESS SPECIFIED)

APPROVE BY  
 FRANK

DATE  
 25/JUN/13

PART NO.  
 FHG10001-SXXMZW1B  
 ITEM NO.



THIRD ANGLE PROJECTION  
 DESIGN UNITS  
 Inch (metric)

X.±.012(0.30)  
 X.±.008(0.20)  
 X.±.006(0.15)

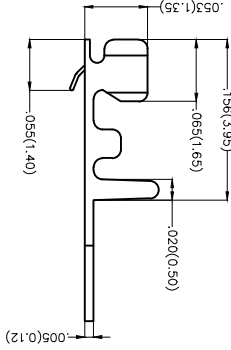
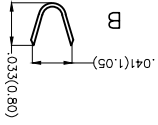
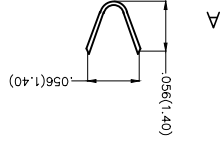
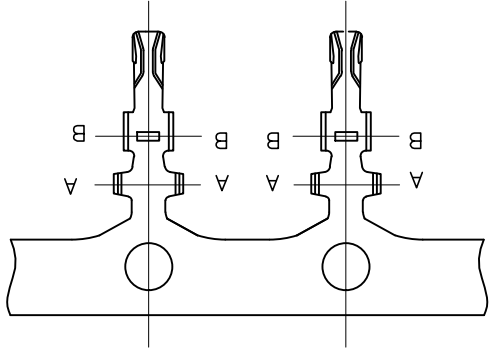
CHECKED BY  
 JACOB

DATE  
 25/JUN/13

WIRE TO BOARD PITCH  
 Pitch 1.0mm(Housing)

REV 0  
 SHEET NO. 1/1

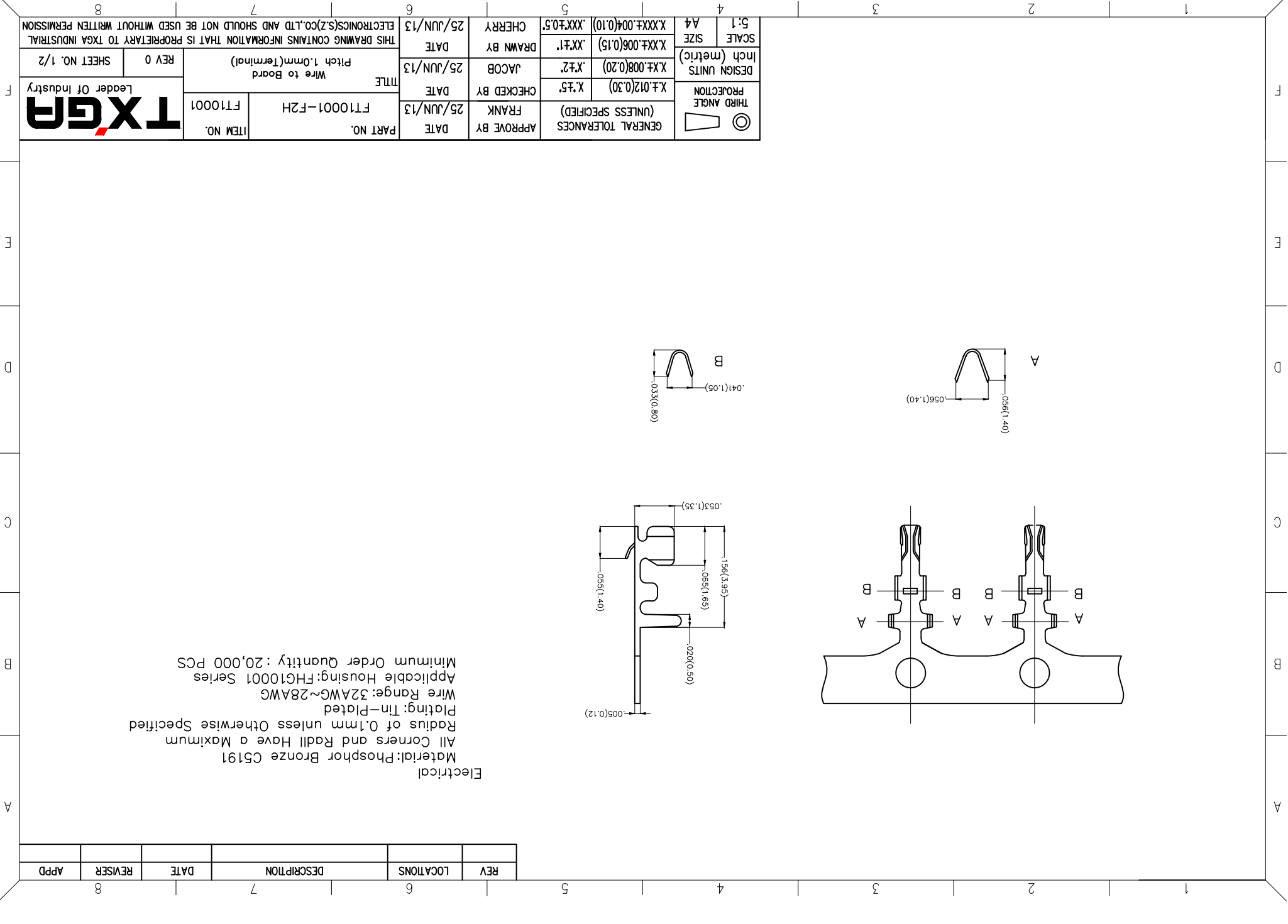
THIS DRAWING CONTAINS INFORMATION THAT IS PROPRIETARY TO TXGA INDUSTRIAL ELECTRONICS(SZ)CO.,LTD AND SHOULD NOT BE USED WITHOUT WRITTEN PERMISSION



Electrical  
 Material: Phosphor Bronze C5191  
 All Corners and Radll Have a Maximum  
 Radius of 0.1mm unless Otherwise Specified  
 Plating: Tin-Plated  
 Wire Range: 32AWG~28AWG  
 Applicable Housing: FHG10001 Series  
 Minimum Order Quantity: 20,000 PCS

REV	LOCATIONS	DESCRIPTION	DATE	REVISER	APPD

THIRD ANGLE 	PROJECTION	X.F.012(0.30)	X.F.5	FRANK	25/JUN/13	DATE	PART NO.	FT10001-F2H	ITEM NO.	FT10001
	DESIGN UNITS Inch (metric)	X.X±.008(0.20)	X.F.2	JACOB	25/JUN/13	DATE	TITLE	Wire to Board Pitch 1.0mm(Terminal)	REV 0	SHEET NO. 1/2
SCALE 5:1	SIZE A4	X.XX±.006(0.15)	X.X±.1	DRAWN BY CHERRY	25/JUN/13	DATE	THIS DRAWING CONTAINS INFORMATION THAT IS PROPRIETARY TO TXGA INDUSTRIAL ELECTRONICS(SZ)CO.,LTD AND SHOULD NOT BE USED WITHOUT WRITTEN PERMISSION			
GENERAL TOLERANCES (UNLESS SPECIFIED)		X.XX±.004(0.10)	.XXX±0.5							





REV	LOCATIONS	DESCRIPTION	DATE	REVISER	APPD

A

B

C

D

E

F

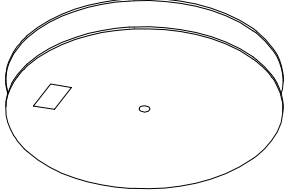
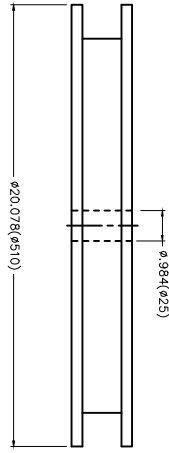
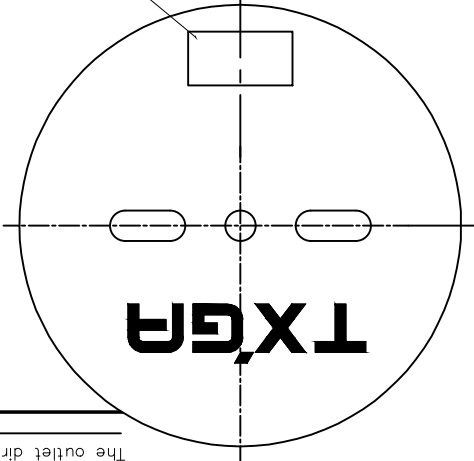


DATE	25/JUN/13	APPROVE BY	FRANK
PART NO.	FT10001-F2H	CHECKED BY	X.F5
ITEM NO.	FT10001	DATE	25/JUN/13
TITLE	Wire to Board Pitch 1.0mm(Terminal)	DRAWN BY	JACOB
REV 0	SHEET NO. 2/2	DATE	25/JUN/13

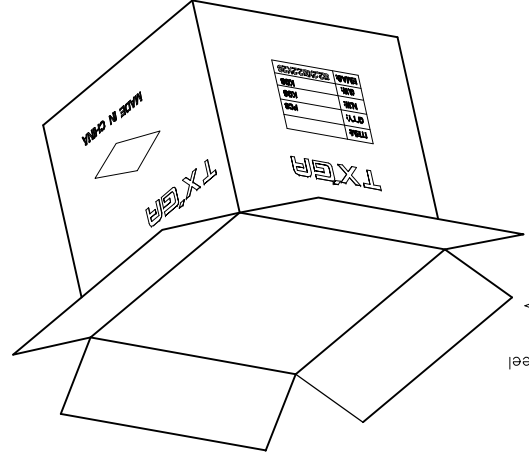
THIS DRAWING CONTAINS INFORMATION THAT IS PROPRIETARY TO TXGA INDUSTRIAL ELECTRONICS(SZ)CO.,LTD AND SHOULD NOT BE USED WITHOUT WRITTEN PERMISSION

GENERAL TOLERANCES (UNLESS SPECIFIED)	X.±.012(0.30)	SCALE	5:1
	X.±.7	SIZE	A4
	X.±.008(0.20)	DESIGN UNITS	Inch (metric)
	X.±.006(0.15)		
	.XXX±.05		

GENERAL TOLERANCES (UNLESS SPECIFIED)



20,000Pcs/Reel



A

B

C

D

E

F

1

2

3

4

5

6

7

8

## X-ON Electronics

Largest Supplier of Electrical and Electronic Components

*Click to view similar products for [Headers & Wire Housings](#) category:*

*Click to view products by [TXGA](#) manufacturer:*

Other Similar products are found below :

[95000-104TRLF](#) [10135584-644402LF](#) [DF62W-EP2022PCA](#) [95000-106TRLF](#) [DF62W-2022SCA](#) [DF62W-EP2022PC](#) [2203348](#) [DF62W-2022SC](#) [1084018](#) [1029039](#) [1084017](#) [802-10-012-10-002000](#) [1112640](#) [1112639](#) [891-007-9SS-BST1T](#) [000-34000](#) [0008550134](#) [0009482033](#) [0009507031](#) [57102-F02-18ULF](#) [57102-S06-03LF](#) [57202-S52-04LF](#) [PCN6-15S-2.5E](#) [0039019024](#) [58102-G61-06LF](#) [582553-1](#) [0009485154](#) [0009508121](#) [0022285053](#) [0050291907](#) [018731A](#) [LY20-4P-DT1-P1E-BR](#) [02.125.8002.8](#) [60101931](#) [60598-1 \(Cut Strip\)](#) [M1625-3R/100](#) [61062-3](#) [61082-181009](#) [CSU011177004](#) [636-1427](#) [638009-1](#) [641938-9](#) [641991-4](#) [644168-1](#) [644827-2](#) [647662-1](#) [65039-019ELF](#) [65692-001LF](#) [65781-018](#) [65781-047](#)