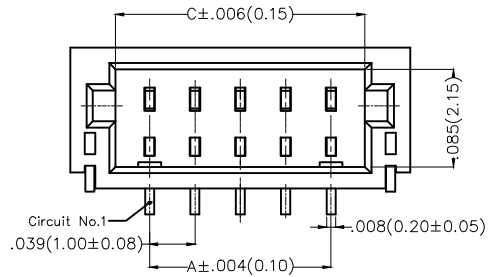


REV	LOCATIONS	DESCRIPTION	DATE	REVISER	APPD

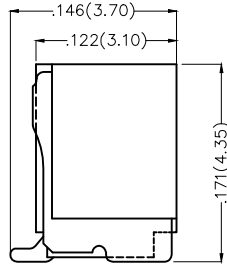
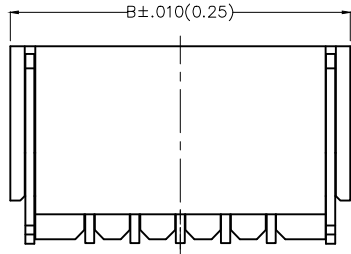


Electrical

Current Rating: 1A AC(rms)/DC
Voltage Rating: 50V AC(rms)/DC
Contact Resistance: 20 m Ω Max
Insulation Resistance: 100 M Ω MIN
Withstanding Voltage: 500V AC r.m.s
Temperature Range—Operating: -25°C~+85°C

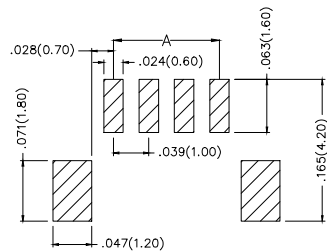
Material and Plating

Housing: PA9T(UL 94V-0)
Contact Pin: Brass/ Tin plated
Solder Tab: Copper alloy/ Tin plated



Ordering Information

FWF 100 02 — S XX S 2 4 W5 M
1 2 3 4 5 6 7 8 9 10





Recommended P.C.Board Layout

1	Category FWF—Wafer	2	Series Number 100—Pitch1.0mm	3	Distinction No. 02	4	Row Option Single Row	5	Circuits XX	6	Entry Angle S—180° Vertical
7	Plating 2—Tin Plated	8	Material—Resin 4—PA9T	9	Color—Resin W5—White	10	Packaging M—Reel				

 THIRD ANGLE PROJECTION	GENERAL TOLERANCES (UNLESS SPECIFIED)		APPROVE BY FRANK	DATE 28/JUN/13	PART NO. FWF10002—SXXS24W5M	ITEM NO. FWF10002	 Leader Of Industry	
	DESIGN UNITS Inch (metric)	X.X±.012(0.30) X.'±5' X.XX±.008(0.20) .X'±2'	CHECKED BY JACOB	DATE 28/JUN/13	TITLE Wire to Board (Wafer) Pitch 1.0mm 180° Vertical (SMT)			REV 0
SCALE 5:1	SIZE A4	X.XX±.006(0.15) .XX'±1' X.XXX±.004(0.10) .XXX'±0.5'	DRAWN BY CHERRY	DATE 28/JUN/13	THIS DRAWING CONTAINS INFORMATION THAT IS PROPRIETARY TO TXGA INDUSTRIAL ELECTRONICS(S.Z)CO.,LTD AND SHOULD NOT BE USED WITHOUT WRITTEN PERMISSION			

REV	LOCATIONS	DESCRIPTION	DATE	REVISER	APPD

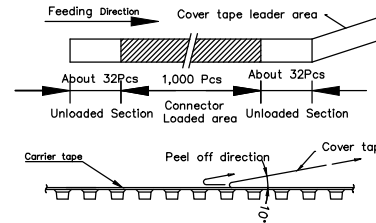
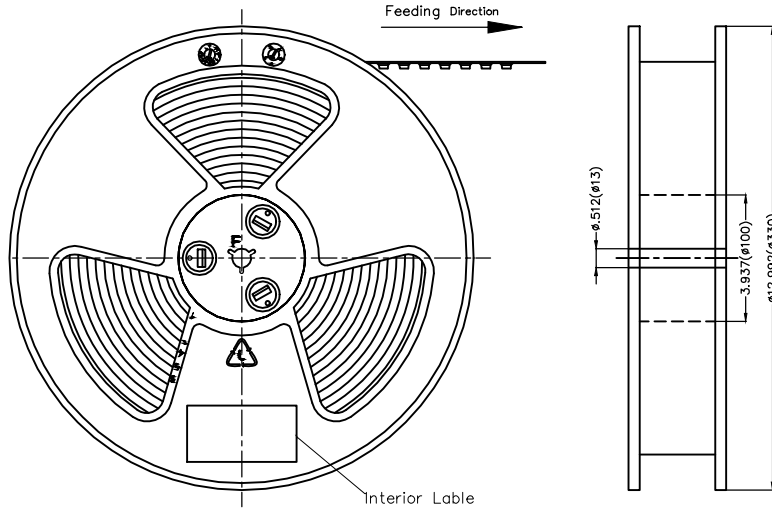
Circuits (n)	Part No.	Dimensions(in/mm)			Circuits (n)	Part No.	Dimensions(in/mm)		
		A	B	C			A	B	C
2	FWF10002-S02S24W5M	.039(1.00)	.177(4.50)	.102(2.60)	11	FWF10002-S11S24W5M	.394(10.00)	.531(13.50)	.457(11.60)
3	FWF10002-S03S24W5M	.078(2.00)	.217(5.50)	.142(3.60)	12	FWF10002-S12S24W5M	.433(11.00)	.571(14.50)	.496(12.60)
4	FWF10002-S04S24W5M	.118(3.00)	.256(6.50)	.181(4.60)	13	FWF10002-S13S24W5M	.472(12.00)	.610(15.50)	.535(13.60)
5	FWF10002-S05S24W5M	.157(4.00)	.295(7.50)	.220(5.60)	14	FWF10002-S14S24W5M	.512(13.00)	.650(16.50)	.575(14.60)
6	FWF10002-S06S24W5M	.197(5.00)	.335(8.50)	.260(6.60)	15	FWF10002-S15S24W5M	.551(14.00)	.689(17.50)	.614(15.60)
7	FWF10002-S07S24W5M	.236(6.00)	.374(9.50)	.299(7.60)	16	FWF10002-S16S24W5M	.591(15.00)	.728(18.50)	.654(16.60)
8	FWF10002-S08S24W5M	.276(7.00)	.413(10.50)	.339(8.60)	17	FWF10002-S17S24W5M	.630(16.00)	.768(19.50)	.693(17.60)
9	FWF10002-S09S24W5M	.315(8.00)	.453(11.50)	.378(9.60)	18	FWF10002-S18S24W5M	.669(17.00)	.807(20.50)	.732(18.60)
10	FWF10002-S10S24W5M	.354(9.00)	.492(12.50)	.417(10.60)	20	FWF10002-S20S24W5M	.748(19.00)	.886(22.50)	.811(20.60)

 THIRD ANGLE PROJECTION	GENERAL TOLERANCES (UNLESS SPECIFIED)		APPROVE BY FRANK	DATE 28/JUN/13	PART NO. FWF10002-SXXS24W5M	ITEM NO. FWF10002	 Leader Of Industry
	X.±.012(0.30)	X.±5'	CHECKED BY JACOB	DATE 28/JUN/13	TITLE Wire to Board (Wafer) Pitch 1.0mm 180° Vertical (SMT)		
DESIGN UNITS Inch (metric)	X.XX±.008(0.20)	.X'±2"	DRAWN BY CHERRY	DATE 28/JUN/13	THIS DRAWING CONTAINS INFORMATION THAT IS PROPRIETARY TO TXGA INDUSTRIAL ELECTRONICS(S.Z)CO.,LTD AND SHOULD NOT BE USED WITHOUT WRITTEN PERMISSION		
SCALE 5:1	SIZE A4	X.XXX±.004(0.10)	.XXX'±0.5'				

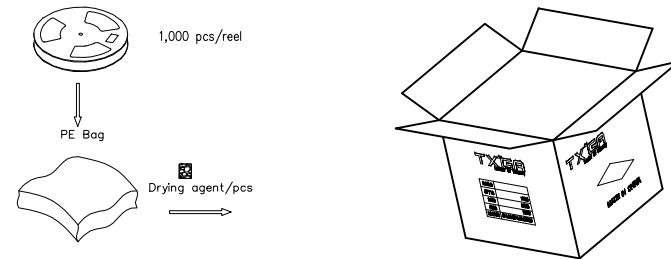
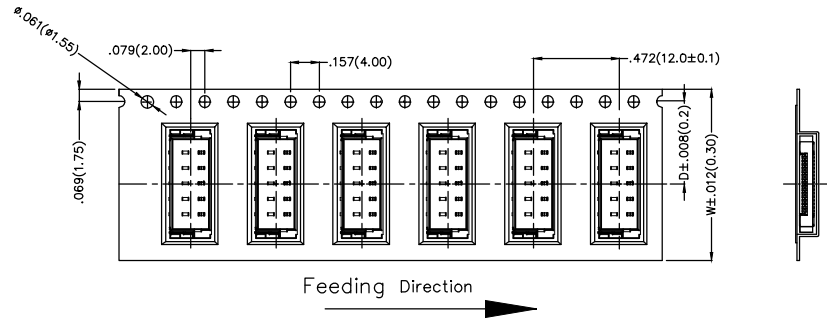
REV	LOCATIONS	DESCRIPTION	DATE	REVISER	APPD

Note:

- 10 sprocket hole cumulative tolerance ± 0.2
- Carrier camber is within 1.0mm in 250mm
- Material: White Conductive polystyrene Alloy 100% recyclable
- All dimensions meet EIA-481-3 requirements
- Peel off force of cover tape & carrier tape: 20g~130g (0.2N~1.3N)
- Component load per 13" reel: 1,000 pcs



Circuits (n)	Dimensions(in/mm)		Circuits (n)	Dimensions(in/mm)	
	D	W		D	W
2	.295(7.50)	.630(16.00)	12	.453(11.50)	.945(24.00)
3	.295(7.50)	.630(16.00)	13	.453(11.50)	.945(24.00)
4	.295(7.50)	.630(16.00)	14	.453(11.50)	.945(24.00)
5	.295(7.50)	.630(16.00)	15	.453(11.50)	.945(24.00)
6	.295(7.50)	.630(16.00)	16	.453(11.50)	.945(24.00)
7	.295(7.50)	.630(16.00)	17	.798 (20.20)	1.732 (44.0)
8	.295(7.50)	.630(16.00)	18	.798 (20.20)	1.732 (44.0)
9	.295(7.50)	.630(16.00)	20	.798 (20.20)	1.732 (44.0)
10	.453(11.50)	.945(24.00)			
11	.453(11.50)	.945(24.00)			



 THIRD ANGLE PROJECTION	GENERAL TOLERANCES (UNLESS SPECIFIED)		APPROVE BY	DATE	PART NO.	ITEM NO.	 Leader Of Industry	
	X. \pm 0.012(0.30)	X.' \pm 5'	FRANK	28/JUN/13	FWF10002-SXXS24W5M	FWF10002		
	DESIGN UNITS Inch (metric)	X.XX \pm 0.008(0.20)	X' \pm 2'	CHECKED BY	DATE	TITLE		REV 0
	SCALE 5:1	X.XX \pm 0.006(0.15)	.XX' \pm 1'	JACOB	28/JUN/13	Wire to Board (Wafer) Pitch 1.0mm 180° Vertical (SMT)		SHEET NO. 3/3
SIZE A4	X.XXX \pm 0.004(0.10)	.XXX' \pm 0.5'	DRAWN BY	DATE	THIS DRAWING CONTAINS INFORMATION THAT IS PROPRIETARY TO TXGA INDUSTRIAL ELECTRONICS(S.Z)CO.,LTD AND SHOULD NOT BE USED WITHOUT WRITTEN PERMISSION			
			CHERRY	28/JUN/13				

X-ON Electronics

Largest Supplier of Electrical and Electronic Components

Click to view similar products for [Headers & Wire Housings](#) category:

Click to view products by [TXGA](#) manufacturer:

Other Similar products are found below :

[0015917161](#) [0022155065](#) [57102-F02-18ULF](#) [58102-G61-06LF](#) [582553-1](#) [01.001.5753.1](#) [0050291907](#) [02.125.8002.8](#) [609-3404](#) [61062-3](#)
[CSU011177004](#) [622-0430](#) [622-3653LF](#) [63453-116](#) [636-1030](#) [636-1427](#) [636-3427](#) [636-4007](#) [641938-9](#) [65495-038](#) [65692-001LF](#) [65781-018](#)
[65781-047](#) [65817-010LF](#) [65817-015LF](#) [67095-007LF](#) [67601157](#) [68631-112](#) [68645-018](#) [699319-000](#) [70.362.1628.0](#) [70-4210](#) [70-4226B](#) [70-](#)
[4853B](#) [71.350.2428.0](#) [733-134](#) [733-162](#) [760-3052](#) [MHR-64-VUAL](#) [80.063.4001.1](#) [800-90-001-10-001000](#) [801-43-002-10-013000](#)
[801-43-006-10-002000](#) [803-43-024-10-001000](#) [803-93-012-10-001000](#) [8-1437020-4](#) [819-22-004-30-001101](#) [820-22-006-30-001101](#)
[820-22-008-30-001101](#) [821-22-002-10-001101](#)