

REV	LOCATIONS	DESCRIPTION	DATE	REVISER	APPD

Electrical
 Current Rating: 1A AC(rms)/DC(AWG32)
 Voltage Rating: 50V AC(rms)/DC
 Contact Resistance: 20 mΩ Max
 Insulation Resistance: 100 MΩ MIN
 Withstanding Voltage: 500V AC r.m.s
 Temperature Range—Operating: -25°C~+85°C
 Material and Plating
 Housing: PA9T UL 94V-0)
 Contact Pin: Brass
 Plating: Gold Plated

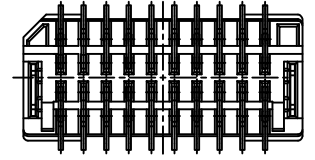
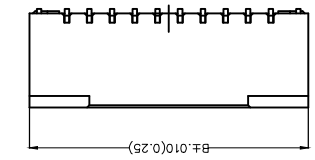
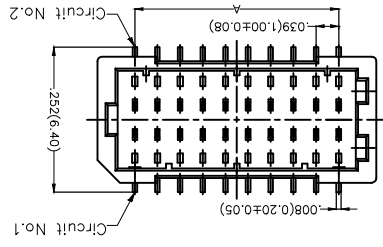
Circuits (n)	Part No.	Dimensions(in/mm)	
		A	B
10	FWF10003-D10S14W5M	.157(4.00)	.287(7.30)
12	FWF10003-D12S14W5M	.276(5.00)	.406(8.30)
16	FWF10003-D16S14W5M	.276(7.00)	.406(10.30)
20	FWF10003-D20S14W5M	.354(9.00)	.484(12.30)
30	FWF10003-D30S14W5M	.551(14.00)	.681(17.30)
40	FWF10003-D40S14W5M	.748(19.00)	.878(22.30)
50	FWF10003-D50S14W5M	.945(24.00)	1.075(27.30)

Ordering Information

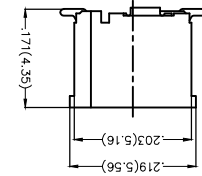
FWF 100 03 - D XX S 1 4 W5 M
 1 2 3 4 5 6 7 8 9 10

1	Category	FWF-Wafer
2	Series Number	100-Pitch1.0mm
3	Distinction No.	03
4	Row Option	Double Row
5	Circuits	XX
6	Entry Angle	S-180° Vertical
7	Plating	1-Gold Plated
8	Material-Resin	4-PA9T
9	Color-Resin	WS-White
10	Packaging	M-Reel

APPROVE BY	DATE	PART NO.	ITEM NO.
FRANK	28/JUN/13	FWF10003-DXXS14W5M	FWF10003
CHECKED BY	DATE	TITLE	
JACOB	28/JUN/13	Wire to Board (Wafer)	
DRAWN BY	DATE	THIS DRAWING CONTAINS INFORMATION THAT IS PROPRIETARY TO TXGA INDUSTRIAL ELECTRONICS(SZ)CO.,LTD AND SHOULD NOT BE USED WITHOUT WRITTEN PERMISSION	
CHERRY	28/JUN/13		
SCALE	SIZE		
5:1	A4		



Recommended P.C.Board Layout

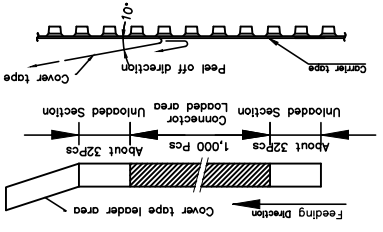


GENERAL TOLERANCES (UNLESS SPECIFIED)	DATE	APPROVE BY
X±.012(0.30)	28/JUN/13	FRANK
X±.008(0.20)	DATE	CHECKED BY
X±.006(0.15)	28/JUN/13	JACOB
X.XX±.1	DRAWN BY	CHERRY
X.XX±.004(0.10)	SCALE	5:1
X.XX±.05	SIZE	A4

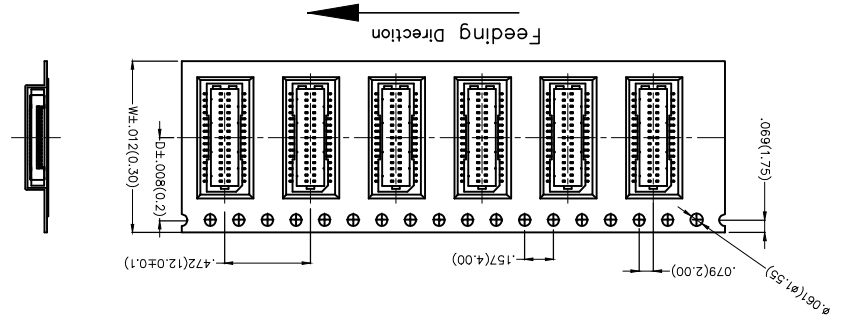
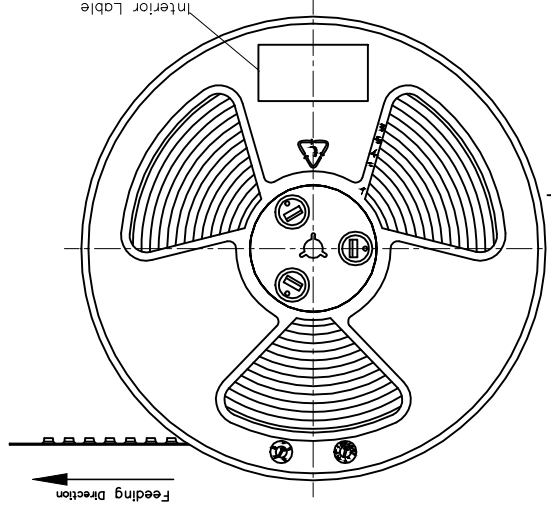
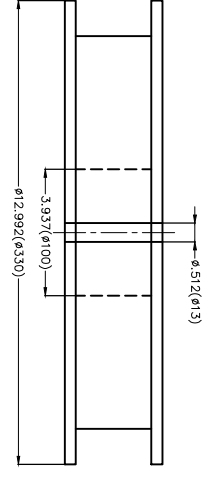
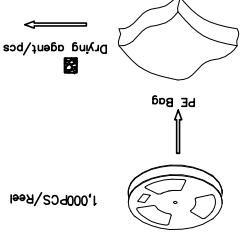
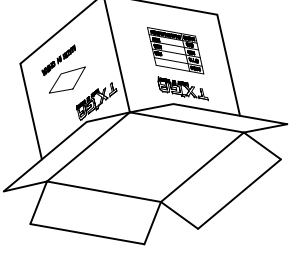
REV	LOCATIONS	DESCRIPTION	DATE	REVISER	APPD

Note:

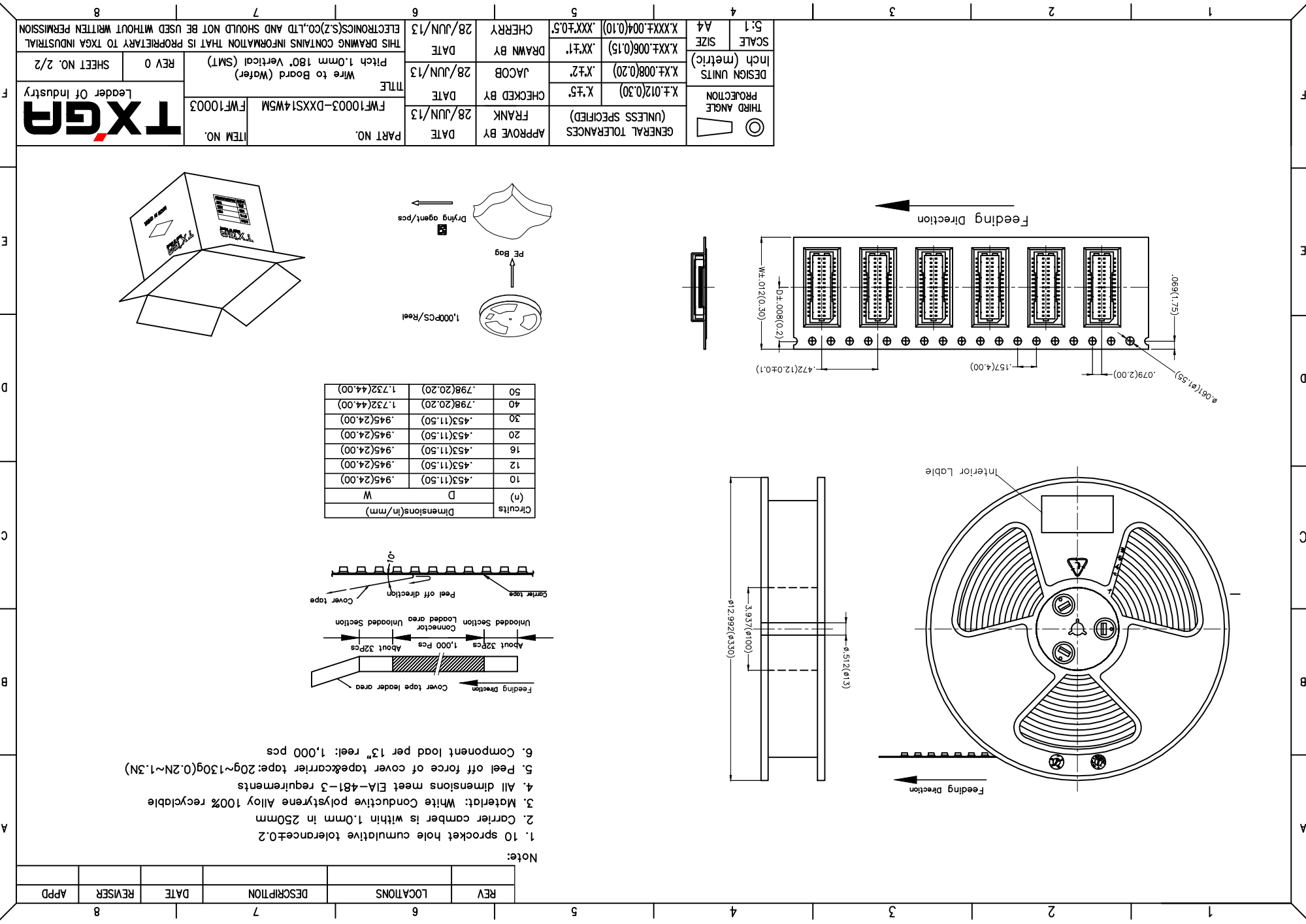
1. 10 sprocket hole cumulative tolerance±.2
2. Carrier camber is within 1.0mm in 250mm
3. Material: White Conductive polystyrene Alloy 100% recyclable
4. All dimensions meet EIA-481-3 requirements
5. Peel off force of cover tape&carrier tape:20g~130g(0.2N~1.3N)
6. Component load per 13" reel: 1,000 pcs



Circuits (n)	D	W	Dimensions(in/mm)
10	.453(11.50)	.945(24.00)	.453(11.50) .945(24.00)
12	.453(11.50)	.945(24.00)	.453(11.50) .945(24.00)
16	.453(11.50)	.945(24.00)	.453(11.50) .945(24.00)
20	.453(11.50)	.945(24.00)	.453(11.50) .945(24.00)
30	.453(11.50)	.945(24.00)	.453(11.50) .945(24.00)
40	.798(20.20)	1.732(44.00)	.798(20.20) 1.732(44.00)
50	.798(20.20)	1.732(44.00)	.798(20.20) 1.732(44.00)



SCALE	5:1	A4	GENERAL TOLERANCES (UNLESS SPECIFIED)	APPROVE BY	DATE	PART NO.	ITEM NO.
DESIGN UNITS	Inch (metric)	X.XX±.008(0.20)	X.XX±.012(0.30)	FRANK	28/JUN/13	FWF10003-DXXS14WSM	FWF10003
THIRD ANGLE		X.XX±.006(0.15)	X.XX±.012(0.30)	CHECKED BY	DATE	TITLE	Leader Of Industry
SCALE SIZE	A4	X.XX±.004(0.10)	X.XX±.012(0.30)	DRAWN BY	DATE	Wire to Board (Water)	REV 0
		X.XX±.004(0.10)	X.XX±.012(0.30)	CHEERY	28/JUN/13	Pitch 1.0mm 180° Vertical (SMT)	SHEET NO. 2/2
THIS DRAWING CONTAINS INFORMATION THAT IS PROPRIETARY TO TXGA INDUSTRIAL ELECTRONICS(SZ)CO.,LTD AND SHOULD NOT BE USED WITHOUT WRITTEN PERMISSION							



X-ON Electronics

Largest Supplier of Electrical and Electronic Components

Click to view similar products for [Headers & Wire Housings](#) category:

Click to view products by [TXGA](#) manufacturer:

Other Similar products are found below :

[95000-104TRLF](#) [10135584-644402LF](#) [DF62W-EP2022PCA](#) [95000-106TRLF](#) [DF62W-2022SCA](#) [DF62W-EP2022PC](#) [2203348](#) [DF62W-2022SC](#) [1084018](#) [1029039](#) [1084017](#) [802-10-012-10-002000](#) [1112640](#) [1112639](#) [891-007-9SS-BST1T](#) [000-34000](#) [0008550134](#) [0009482033](#) [0009507031](#) [57102-F02-18ULF](#) [57102-S06-03LF](#) [57202-S52-04LF](#) [PCN6-15S-2.5E](#) [0039019024](#) [58102-G61-06LF](#) [582553-1](#) [0009485154](#) [0009508121](#) [0022285053](#) [0050291907](#) [018731A](#) [LY20-4P-DT1-P1E-BR](#) [02.125.8002.8](#) [60101931](#) [60598-1 \(Cut Strip\)](#) [M1625-3R/100](#) [61062-3](#) [61082-181009](#) [CSU011177004](#) [636-1427](#) [638009-1](#) [641938-9](#) [641991-4](#) [644168-1](#) [644827-2](#) [647662-1](#) [65039-019ELF](#) [65692-001LF](#) [65781-018](#) [65781-047](#)