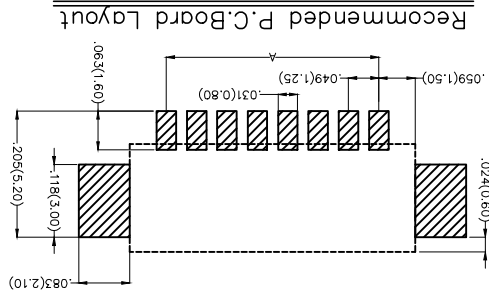
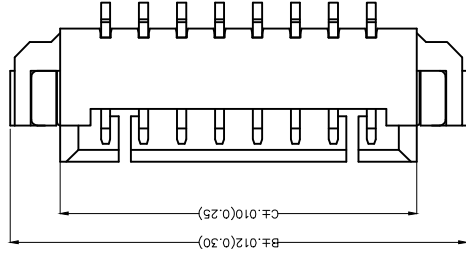
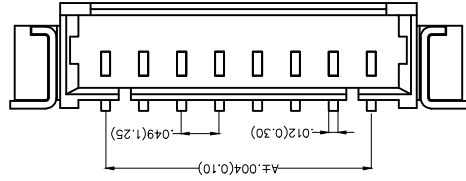
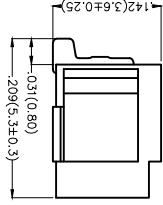


REV	LOCATIONS	DESCRIPTION	DATE	REVISER	APPD

**Electrical**  
 Current Rating: 1.0A AC(rms)/DC  
 Voltage Rating: 125V AC(rms)/DC  
 Contact Resistance: 20 mΩ Max  
 Insulation Resistance: 100 MΩ MIN  
 Withstanding Voltage: 250V AC r.m.s  
 Temperature Range—Operating: -25°C~+85°C  
 Material and Plating  
 Housing: PA9T (UL 94V-0)  
 Contact Pin: Brass/ Tin plated  
 Solder Tab: Copper alloy/ Tin plated



Ordering Information

FWF 125 04 - S XX B  
 1 FWF 125 04 - S XX B  
 2 Series Number  
 3 Distinction No.  
 4 Row Option  
 5 Circuits  
 6 Entry Angle  
 7 Plating  
 8 Material-Resin  
 9 Color-Resin  
 10 Packaging

1	Category	FWF-Wafer
2	Series Number	125-Pitch1.25mm
3	Distinction No.	04
4	Row Option	S-Single Row
5	Circuits	XX
6	Entry Angle	B-90° Angle
7	Plating	2-Tin Plated
8	Material-Resin	4-PA9T
9	Color-Resin	WS-Natural
10	Packaging	M-Reel


THIRD ANGLE	PROJECTION	X.±.012(0.30)	X.±.7	8/JUL/13	DATE	FWF12504-SXXB4WSM	ITEM NO.
GENERAL TOLERANCES (UNLESS SPECIFIED)	APPROVE BY	FRANK	8/JUL/13	DATE	FWF12504-SXXB4WSM	ITEM NO.	
DESIGN UNITS Inch (metric)	CHECKED BY	JACOB	8/JUL/13	DATE			
SCALE 5:1	DRAWN BY	CHERRY	8/JUL/13	DATE			
SIZE A4							

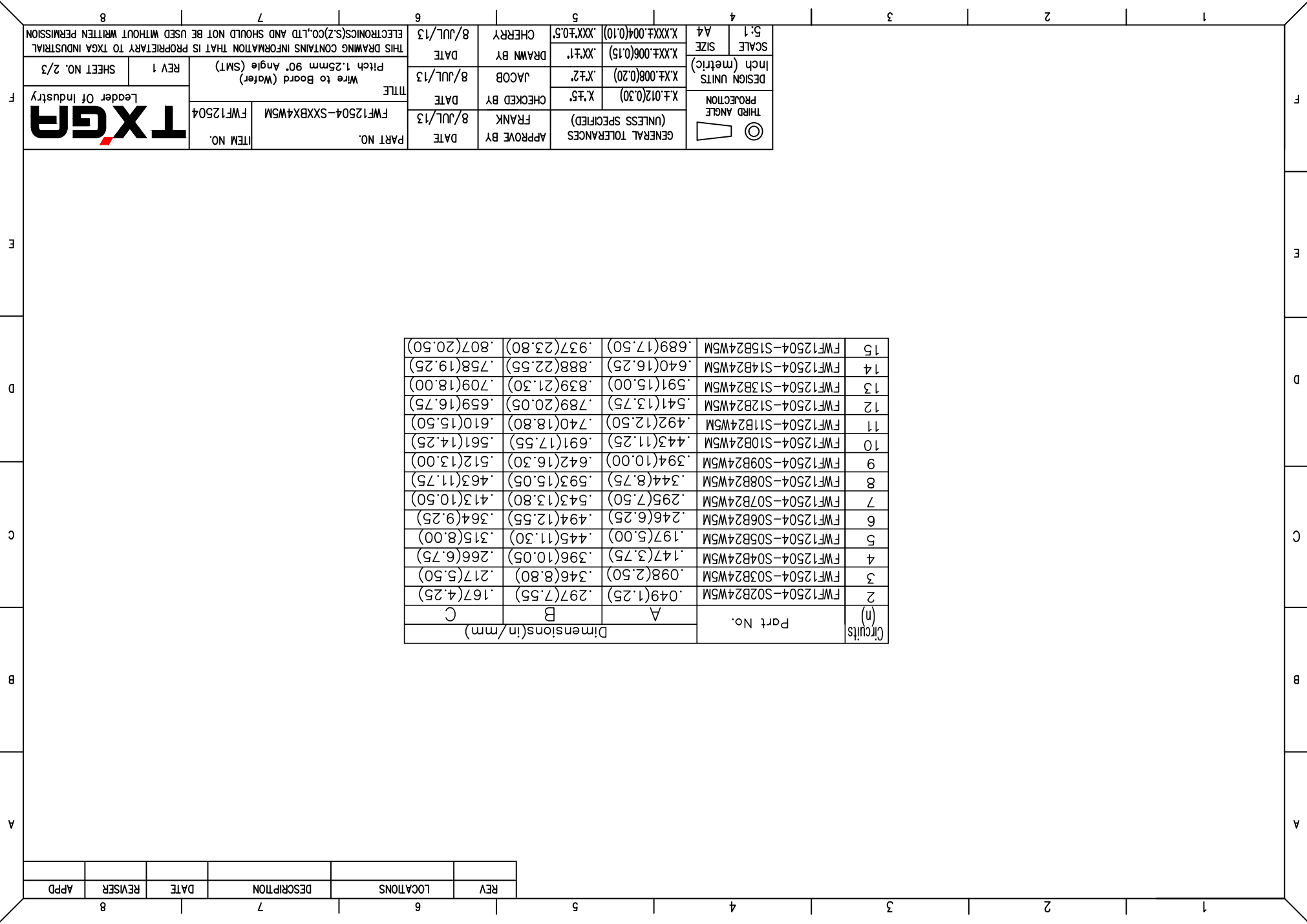


THIS DRAWING CONTAINS INFORMATION THAT IS PROPRIETARY TO TXGA INDUSTRIAL ELECTRONICS(SZ)CO.,LTD AND SHOULD NOT BE USED WITHOUT WRITTEN PERMISSION

REV	LOCATIONS	DESCRIPTION	DATE	REVISER	APPD

Circuits (n)	Part No.	Dimensions(in/mm)		
		A	B	C
2	FWF12504-S02B24W5M	.049(1.25)	.297(7.55)	.167(4.25)
3	FWF12504-S03B24W5M	.098(2.50)	.346(8.80)	.217(5.50)
4	FWF12504-S04B24W5M	.147(3.75)	.396(10.05)	.266(6.75)
5	FWF12504-S05B24W5M	.197(5.00)	.445(11.30)	.315(8.00)
6	FWF12504-S06B24W5M	.246(6.25)	.494(12.55)	.364(9.25)
7	FWF12504-S07B24W5M	.295(7.50)	.543(13.80)	.413(10.50)
8	FWF12504-S08B24W5M	.344(8.75)	.593(15.05)	.463(11.75)
9	FWF12504-S09B24W5M	.394(10.00)	.642(16.30)	.512(13.00)
10	FWF12504-S10B24W5M	.443(11.25)	.691(17.55)	.561(14.25)
11	FWF12504-S11B24W5M	.492(12.50)	.740(18.80)	.610(15.50)
12	FWF12504-S12B24W5M	.541(13.75)	.789(20.05)	.659(16.75)
13	FWF12504-S13B24W5M	.591(15.00)	.839(21.30)	.709(18.00)
14	FWF12504-S14B24W5M	.640(16.25)	.888(22.55)	.758(19.25)
15	FWF12504-S15B24W5M	.689(17.50)	.937(23.80)	.807(20.50)

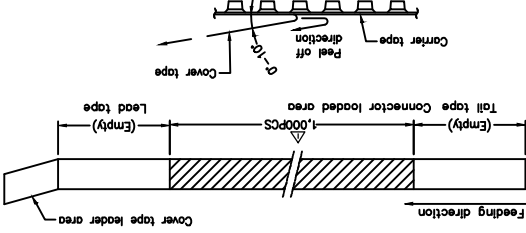
 THIRD ANGLE PROJECTION	DESIGN UNITS	X.±.008(0.20)	X.±.2'	JACOB	8/JUL/13	PART NO. FWF12504-SXXBX4W5M ITEM NO. FWF12504 TITLE Wire to Board (Water) Pitch 1.25mm 90° Angle (SMT)	SCALE	5:1	GENERAL TOLERANCES (UNLESS SPECIFIED)	APPROVE BY	FRANK	8/JUL/13	DATE	8/JUL/13	THIS DRAWING CONTAINS INFORMATION THAT IS PROPRIETARY TO TXGA INDUSTRIAL ELECTRONICS(SZ)CO.,LTD AND SHOULD NOT BE USED WITHOUT WRITTEN PERMISSION
	Inch (metric)	X.±.006(0.15)	.XX±.1'	DRAWN BY	CHERRY		8/JUL/13	DATE		8/JUL/13	SIZE	A4	X.XXX±.004(0.10)	.XXX±.05'	



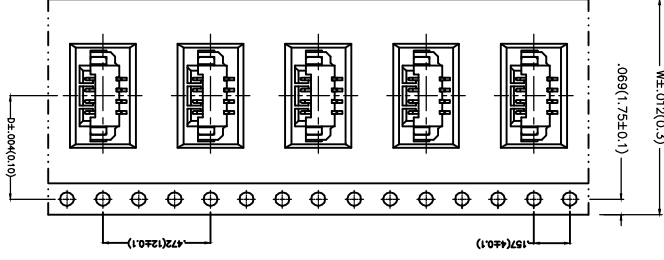
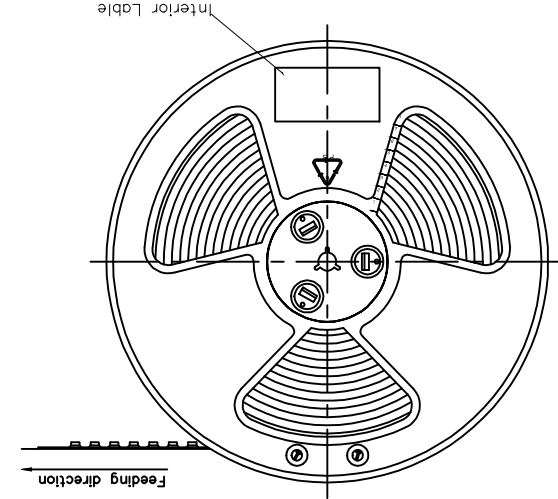
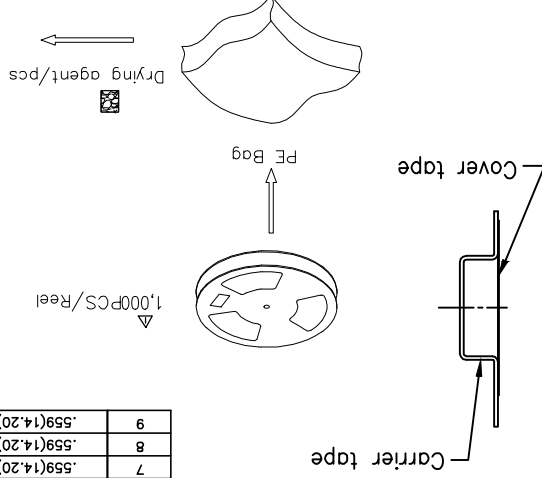
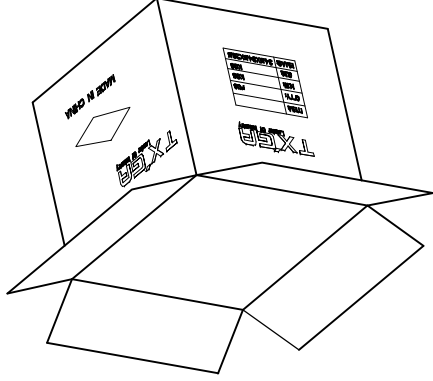
REV	LOCATIONS	DESCRIPTION	DATE	REVERSER	APPD
1	△	MPQ 1500PCS/Reel Change to 1000PCS/Reel	20150811	CHERRY	JACOB

Note:

1. 10 sprocket hole cumulative tolerance ±0.2
2. Carrier camber is within 1.0mm in 100mm
3. Material: White Conductive polystyrene Alloy 100% recyclable
4. All dimensions meet EIA-481-3 requirements
5. Component load per 15" reel: 1,000 pcs



Circuits	Dimensions(in./mm)	
	D	W
(h)		
2	.295(7.50)	.630(16.00)
3	.295(7.50)	.630(16.00)
4	.453(11.50)	.945(24.00)
5	.453(11.50)	.945(24.00)
6	.453(11.50)	.945(24.00)
7	.559(14.20)	1.260(32.00)
8	.559(14.20)	1.260(32.00)
9	.559(14.20)	1.260(32.00)



THIRD ANGLE	PROJECTION	X.±0.12(0.30)
DESIGN UNITS	Inch (metric)	X.±.008(0.20)
SCALE	SIZE	X.XX±.006(0.15)
5:1	A4	X.XXX±.004(0.10)

GENERAL TOLERANCES	APPROVE BY	DATE
(UNLESS SPECIFIED)	FRANK	8/JUL/13
	CHECKED BY	DATE
	JACOB	8/JUL/13
	DRAWN BY	DATE
	CHERRY	8/JUL/13

PART NO.	ITEM NO.
FWF12504-SXXBX4WSM	FWF12504
TITLE	
Wire to Board (Water)	
Pitch 1.25mm 90° Angle (SMT)	
REV 1	SHEET NO. 3/3

THIS DRAWING CONTAINS INFORMATION THAT IS PROPRIETARY TO TXGA INDUSTRIAL ELECTRONICS(S)Z)CO.,LTD AND SHOULD NOT BE USED WITHOUT WRITTEN PERMISSION

**TXGA**  
Leader Of Industry

## X-ON Electronics

Largest Supplier of Electrical and Electronic Components

*Click to view similar products for [Headers & Wire Housings](#) category:*

*Click to view products by [TXGA](#) manufacturer:*

Other Similar products are found below :

[95000-104TRLF](#) [10135584-644402LF](#) [DF62W-EP2022PCA](#) [95000-106TRLF](#) [DF62W-2022SCA](#) [DF62W-EP2022PC](#) [2203348](#) [DF62W-2022SC](#) [1084018](#) [1029039](#) [1084017](#) [802-10-012-10-002000](#) [1112640](#) [1112639](#) [891-007-9SS-BST1T](#) [000-34000](#) [0008550134](#) [0009482033](#) [0009507031](#) [57102-F02-18ULF](#) [57102-S06-03LF](#) [57202-S52-04LF](#) [PCN6-15S-2.5E](#) [0039019024](#) [58102-G61-06LF](#) [582553-1](#) [0009485154](#) [0009508121](#) [0022285053](#) [0050291907](#) [018731A](#) [LY20-4P-DT1-P1E-BR](#) [02.125.8002.8](#) [60101931](#) [60598-1 \(Cut Strip\)](#) [M1625-3R/100](#) [61062-3](#) [61082-181009](#) [CSU011177004](#) [636-1427](#) [638009-1](#) [641938-9](#) [641991-4](#) [644168-1](#) [644827-2](#) [647662-1](#) [65039-019ELF](#) [65692-001LF](#) [65781-018](#) [65781-047](#)