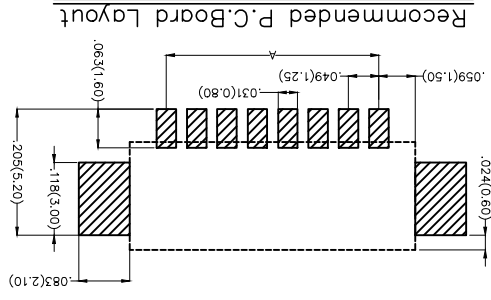
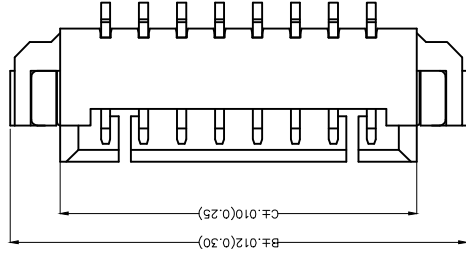
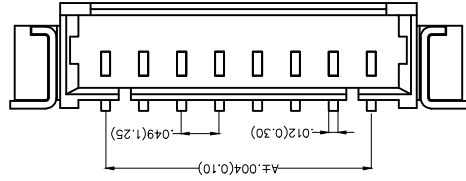
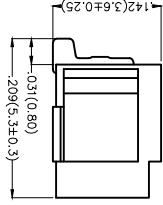


REV	LOCATIONS	DESCRIPTION	DATE	REVISER	APPD

Electrical
 Current Rating: 1.0A AC(rms)/DC
 Voltage Rating: 125V AC(rms)/DC
 Contact Resistance: 20 m Ω Max
 Insulation Resistance: 100 M Ω MIN
 Withstanding Voltage: 250V AC r.m.s
 Temperature Range—Operating: -25°C~+85°C
 Material and Plating
 Housing: PA9T (UL 94V-0)
 Contact Pin: Brass/ Tin plated
 Solder Tab: Copper alloy/ Tin plated



Ordering Information

FWF 125 04 - S XX B
 1 FWF 125 04 - S XX B
 2 Series Number
 3 Distinction No.
 4 Row Option
 5 Circuits
 6 Entry Angle
 7 Plating
 8 Material-Resin
 9 Color-Resin
 10 Packaging


1	Category	FWF-Wafer
2	Series Number	125-Pitch1.25mm
3	Distinction No.	04
4	Row Option	S-Single Row
5	Circuits	XX
6	Entry Angle	B-90° Angle
7	Plating	2-Tin Plated
8	Material-Resin	4-PA9T
9	Color-Resin	WS-Natural
10	Packaging	M-Reel

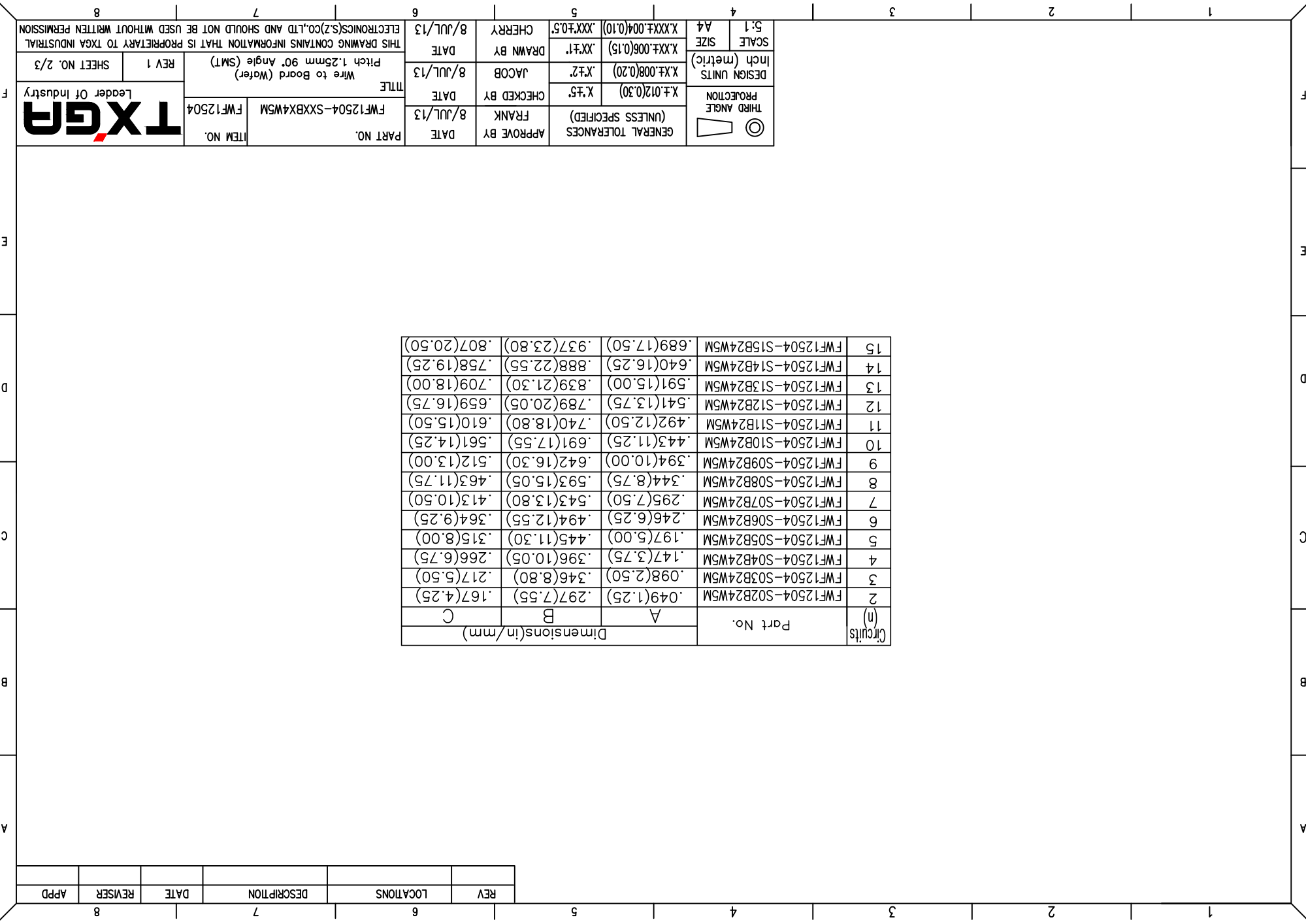
THIRD ANGLE	PROJECTION	X.±.012(0.30)	X.±.7	8/JUL/13	DATE	FWF12504-SXXB4WSM	ITEM NO.
GENERAL TOLERANCES (UNLESS SPECIFIED)	APPROVE BY	FRANK	8/JUL/13	DATE	FWF12504-SXXB4WSM	ITEM NO.	
DESIGN UNITS Inch (metric)	CHECKED BY	JACOB	8/JUL/13	DATE	Wire to Board (Wafer) Pitch 1.25mm 90° Angle (SMT)		
SCALE 5:1	DRAWN BY	CHERRY	8/JUL/13	DATE	THIS DRAWING CONTAINS INFORMATION THAT IS PROPRIETARY TO TXGA INDUSTRIAL ELECTRONICS(SZ)CO.,LTD AND SHOULD NOT BE USED WITHOUT WRITTEN PERMISSION		



REV	LOCATIONS	DESCRIPTION	DATE	REVISER	APPD

Circuits (n)	Part No.	Dimensions(in/mm)		
		A	B	C
2	FWF12504-S02B24W5M	.049(1.25)	.297(7.55)	.167(4.25)
3	FWF12504-S03B24W5M	.098(2.50)	.346(8.80)	.217(5.50)
4	FWF12504-S04B24W5M	.147(3.75)	.396(10.05)	.266(6.75)
5	FWF12504-S05B24W5M	.197(5.00)	.445(11.30)	.315(8.00)
6	FWF12504-S06B24W5M	.246(6.25)	.494(12.55)	.364(9.25)
7	FWF12504-S07B24W5M	.295(7.50)	.543(13.80)	.413(10.50)
8	FWF12504-S08B24W5M	.344(8.75)	.593(15.05)	.463(11.75)
9	FWF12504-S09B24W5M	.394(10.00)	.642(16.30)	.512(13.00)
10	FWF12504-S10B24W5M	.443(11.25)	.691(17.55)	.561(14.25)
11	FWF12504-S11B24W5M	.492(12.50)	.740(18.80)	.610(15.50)
12	FWF12504-S12B24W5M	.541(13.75)	.789(20.05)	.659(16.75)
13	FWF12504-S13B24W5M	.591(15.00)	.839(21.30)	.709(18.00)
14	FWF12504-S14B24W5M	.640(16.25)	.888(22.55)	.758(19.25)
15	FWF12504-S15B24W5M	.689(17.50)	.937(23.80)	.807(20.50)

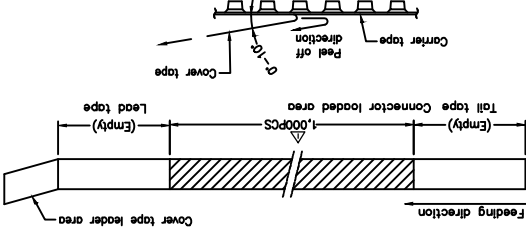
 THIRD ANGLE PROJECTION	GENERAL TOLERANCES (UNLESS SPECIFIED)	APPROVE BY	FRANK	DATE	8/JUL/13	PART NO.	FWF12504-SXXBX4W5M	ITEM NO.	FWF12504
	DESIGN UNITS Inch (metric)	X.±.012(0.30) X.±.008(0.20) X.±.006(0.15)	CHECKED BY	JACOB	DATE	8/JUL/13	TITLE	Wire to Board (Water) Pitch 1.25mm 90° Angle (SMT)	REV 1
SCALE	5:1 A4	DRAWN BY	CHEERY	DATE	8/JUL/13	THIS DRAWING CONTAINS INFORMATION THAT IS PROPRIETARY TO TXGA INDUSTRIAL ELECTRONICS(SZ)CO.,LTD AND SHOULD NOT BE USED WITHOUT WRITTEN PERMISSION			



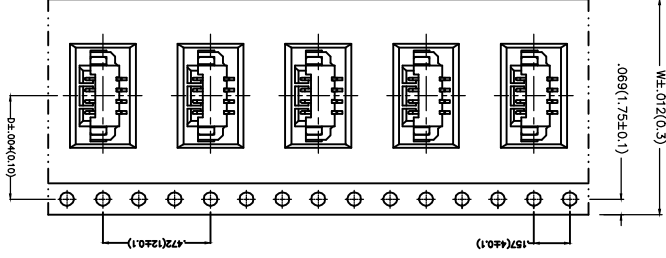
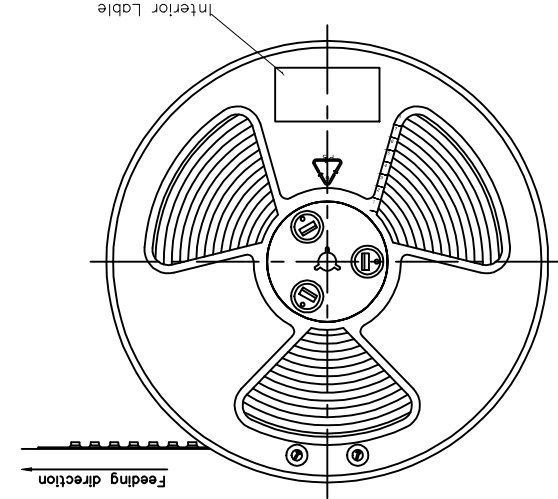
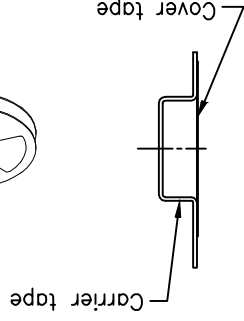
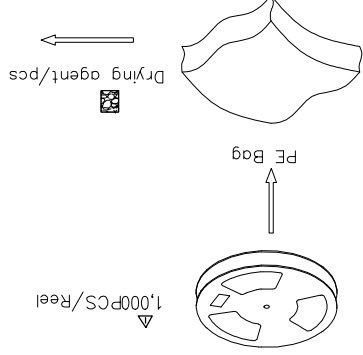
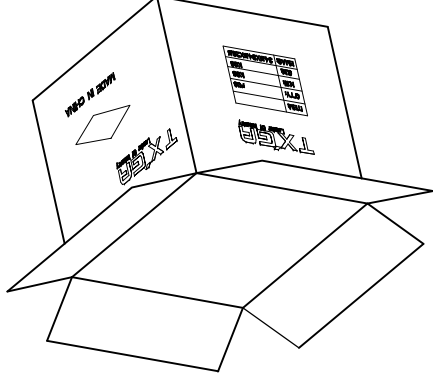
REV	LOCATIONS	DESCRIPTION	DATE	REVERSER	APPD
1	Δ	MPQ 1500PCS/Reel Change to 1000PCS/Reel	20150811	CHERRY	JACOB

Note:

1. 10 sprocket hole cumulative tolerance ±0.2
2. Carrier camber is within 1.0mm in 100mm
3. Material: White Conductive polystyrene Alloy 100% recyclable
4. All dimensions meet EIA-481-3 requirements
5. Component load per 15" reel: 1,000 pcs



Circuits	Dimensions(in./mm)	
	D	W
(h)		
2	.295(7.50)	.630(16.00)
3	.295(7.50)	.630(16.00)
4	.453(11.50)	.945(24.00)
5	.453(11.50)	.945(24.00)
6	.453(11.50)	.945(24.00)
7	.559(14.20)	1.260(32.00)
8	.559(14.20)	1.260(32.00)
9	.559(14.20)	1.260(32.00)



THIRD ANGLE	PROJECTION	DESIGN UNITS	SCALE
○	○	X.X±.008(0.20)	5:1
△	△	Inch (metric)	A4
		X.XX±.004(0.10)	

GENERAL TOLERANCES (UNLESS SPECIFIED)	APPROVE BY	DATE	FRANK
X.±.012(0.30)	8/JUL/13	8/JUL/13	
X.XX±.006(0.15)	CHECKED BY	DATE	JACOB
X.XX±.004(0.10)	8/JUL/13	8/JUL/13	
X.XX±.004(0.10)	DRAWN BY	DATE	CHERRY

ITEM NO.	PART NO.	DATE	8/JUL/13
FWF12504	FWF12504-SXXBX4WSM	DATE	8/JUL/13
Leader Of Industry	TXGA	DATE	8/JUL/13
REV 1	SHEET NO. 3/3	DATE	8/JUL/13
THIS DRAWING CONTAINS INFORMATION THAT IS PROPRIETARY TO TXGA INDUSTRIAL ELECTRONICS(SZ)CO.,LTD AND SHOULD NOT BE USED WITHOUT WRITTEN PERMISSION			

X-ON Electronics

Largest Supplier of Electrical and Electronic Components

Click to view similar products for [Headers & Wire Housings](#) category:

Click to view products by [TXGA](#) manufacturer:

Other Similar products are found below :

[95000-104TRLF](#) [10135584-644402LF](#) [DF62W-EP2022PCA](#) [95000-106TRLF](#) [DF62W-2022SCA](#) [DF62W-EP2022PC](#) [2203348](#) [DF62W-2022SC](#) [1084018](#) [1029039](#) [1084017](#) [802-10-012-10-002000](#) [1112640](#) [1112639](#) [891-007-9SS-BST1T](#) [000-34000](#) [0008550134](#) [0009482033](#) [0009507031](#) [57102-F02-18ULF](#) [57102-S06-03LF](#) [57202-S52-04LF](#) [PCN6-15S-2.5E](#) [0039019024](#) [58102-G61-06LF](#) [582553-1](#) [0009485154](#) [0009508121](#) [0022285053](#) [0050291907](#) [018731A](#) [LY20-4P-DT1-P1E-BR](#) [02.125.8002.8](#) [60101931](#) [60598-1 \(Cut Strip\)](#) [M1625-3R/100](#) [61062-3](#) [61082-181009](#) [CSU011177004](#) [636-1427](#) [638009-1](#) [641938-9](#) [641991-4](#) [644168-1](#) [644827-2](#) [647662-1](#) [65039-019ELF](#) [65692-001LF](#) [65781-018](#) [65781-047](#)