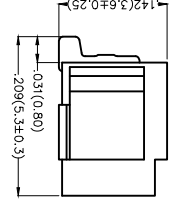
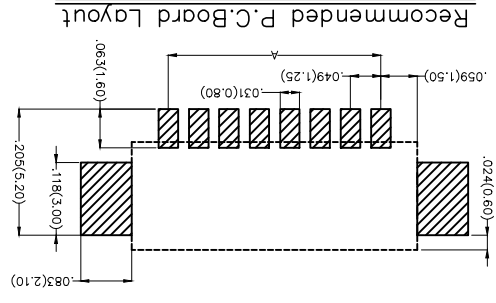
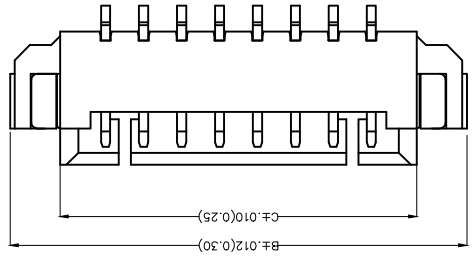
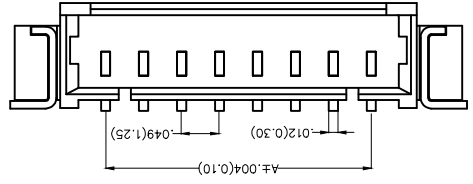


REV	LOCATIONS	DESCRIPTION	DATE	REVISER	APPD

Electrical
 Current Rating: 1.0A AC(rms)/DC
 Voltage Rating: 125V AC(rms)/DC
 Contact Resistance: 20 mΩ Max
 Insulation Resistance: 100 MΩ MIN
 Withstanding Voltage: 250V AC r.m.s
 Temperature Range—Operating: -25°C~+85°C
 Material and Plating
 Housing: PA9T (UL 94V-0)
 Contact Pin: Brass/ Tin plated
 Solder Tab: Copper alloy/ Tin plated



1	Category	FWF-Wafer	2	Series Number	125-Pitch1.25mm
3	Distinction No.	04	4	Row Option	S-Single Row
5	Circuits	XX	6	Entry Angle	B-90° Angle
7	Plating	2-Tin Plated	8	Material-Resin	4-PA9T
9	Color-Resin	WS-Natural	10	Packaging	M-Reel

Ordering Information


FWF 125 04 - S XX B
 1 2 3 4 5 6 7 8 9 10
 M W5 M

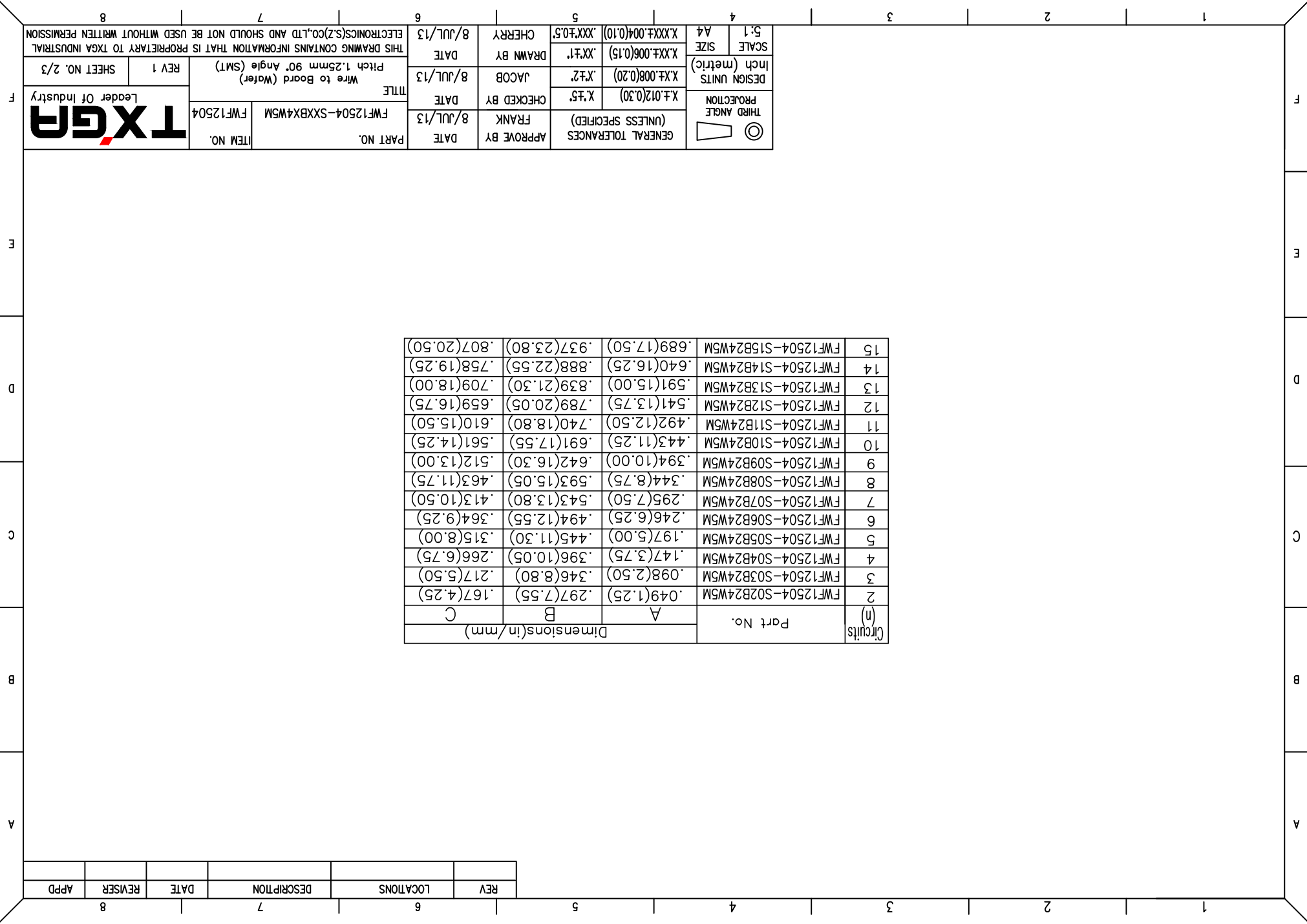
THIRD ANGLE PROJECTION	GENERAL TOLERANCES (UNLESS SPECIFIED)	APPROVE BY	DATE	PART NO.	ITEM NO.
	X.±.012(0.30) X.±.008(0.20) X.±.006(0.15) X.XXX±.004(0.10) X.XX±.05	FRANK	8/JUL/13	FWF12504-SXXBX4WSM	FWF12504
DESIGN UNITS Inch (metric)	X.±.008(0.20) X.±.006(0.15) X.XX±.05	CHECKED BY	DATE	TITLE	REV 1
SCALE 5:1 A4	X.XX±.05 X.XX±.006(0.15) X.XX±.05	JACOB	8/JUL/13	Wire to Board (Wafer) Pitch 1.25mm 90° Angle (SMT)	SHEET NO. 1/3
		DRAWN BY	DATE	THIS DRAWING CONTAINS INFORMATION THAT IS PROPRIETARY TO TXGA INDUSTRIAL ELECTRONICS(SZ)CO.,LTD AND SHOULD NOT BE USED WITHOUT WRITTEN PERMISSION	
		CHERRY	8/JUL/13		



REV	LOCATIONS	DESCRIPTION	DATE	REVISER	APPD

Circuits (n)	Part No.	Dimensions(in/mm)		
		A	B	C
2	FWF12504-S02B24W5M	.049(1.25)	.297(7.55)	.167(4.25)
3	FWF12504-S03B24W5M	.098(2.50)	.346(8.80)	.217(5.50)
4	FWF12504-S04B24W5M	.147(3.75)	.396(10.05)	.266(6.75)
5	FWF12504-S05B24W5M	.197(5.00)	.445(11.30)	.315(8.00)
6	FWF12504-S06B24W5M	.246(6.25)	.494(12.55)	.364(9.25)
7	FWF12504-S07B24W5M	.295(7.50)	.543(13.80)	.413(10.50)
8	FWF12504-S08B24W5M	.344(8.75)	.593(15.05)	.463(11.75)
9	FWF12504-S09B24W5M	.394(10.00)	.642(16.30)	.512(13.00)
10	FWF12504-S10B24W5M	.443(11.25)	.691(17.55)	.561(14.25)
11	FWF12504-S11B24W5M	.492(12.50)	.740(18.80)	.610(15.50)
12	FWF12504-S12B24W5M	.541(13.75)	.789(20.05)	.659(16.75)
13	FWF12504-S13B24W5M	.591(15.00)	.839(21.30)	.709(18.00)
14	FWF12504-S14B24W5M	.640(16.25)	.888(22.55)	.758(19.25)
15	FWF12504-S15B24W5M	.689(17.50)	.937(23.80)	.807(20.50)

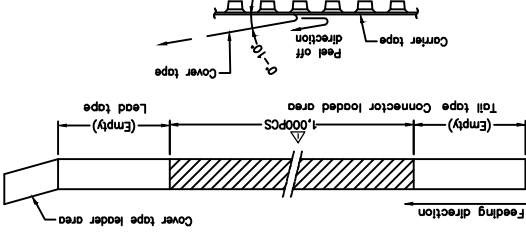
 THIRD ANGLE PROJECTION	GENERAL TOLERANCES (UNLESS SPECIFIED)	APPROVE BY	FRANK	DATE	8/JUL/13	PART NO.	FWF12504-SXXBX4W5M	ITEM NO.	FWF12504
	DESIGN UNITS Inch (metric)	X.±.012(0.30) X.±.008(0.20) X.±.006(0.15)	CHECKED BY	JACOB	DATE	8/JUL/13	TITLE	Wire to Board (Water) Pitch 1.25mm 90° Angle (SMT)	REV 1
SCALE	5:1 A4	DRAWN BY	CHEERY	DATE	8/JUL/13	THIS DRAWING CONTAINS INFORMATION THAT IS PROPRIETARY TO TXGA INDUSTRIAL ELECTRONICS(SZ)CO.,LTD AND SHOULD NOT BE USED WITHOUT WRITTEN PERMISSION			



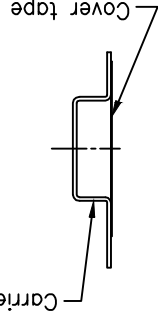
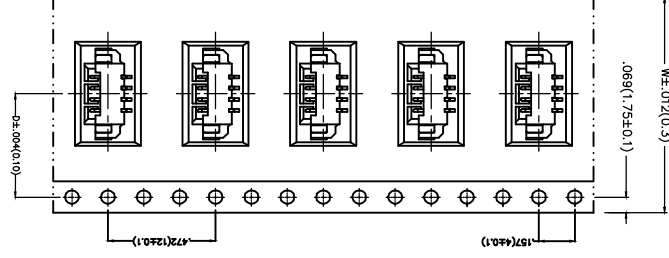
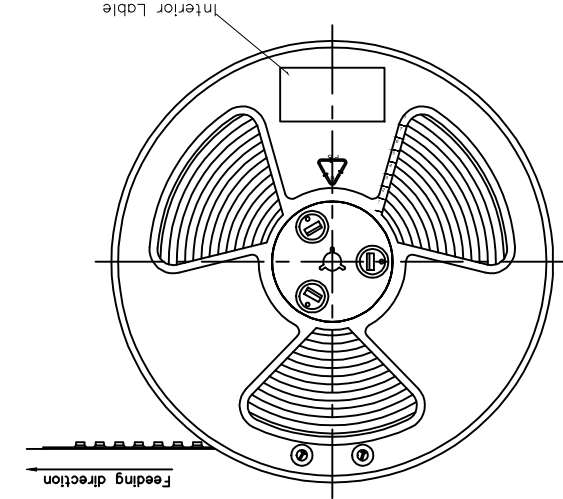
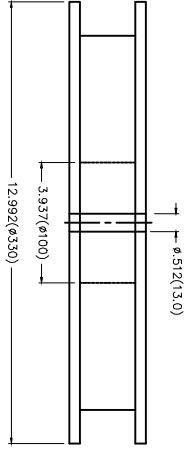
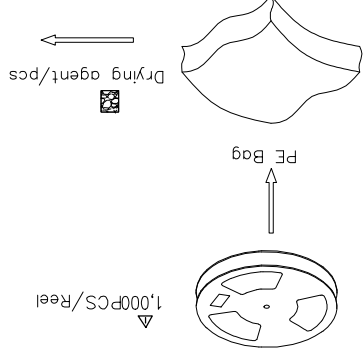
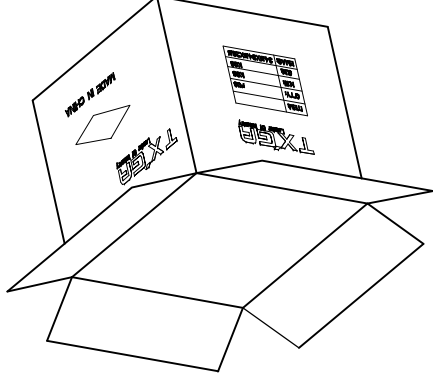
REV	LOCATIONS	DESCRIPTION	DATE	REVERSER	APPD
1	△	MPQ 1500PCS/Reel Change to 1000PCS/Reel	20150811	CHERRY	JACOB

Note:

1. 10 sprocket hole cumulative tolerance ±0.2
2. Carrier camber is within 1.0mm in 100mm
3. Material: White Conductive polystyrene Alloy 100% recyclable
4. All dimensions meet EIA-481-3 requirements
5. Component load per 15" reel: 1,000 pcs



Circuits	Dimensions(in./mm)	
	D	W
(h)		
2	.295(7.50)	.630(16.00)
3	.295(7.50)	.630(16.00)
4	.453(11.50)	.945(24.00)
5	.453(11.50)	.945(24.00)
6	.453(11.50)	.945(24.00)
7	.559(14.20)	1.260(32.00)
8	.559(14.20)	1.260(32.00)
9	.559(14.20)	1.260(32.00)



THIRD ANGLE	DESIGN UNITS	SCALE	GENERAL TOLERANCES	APPROVE BY	DATE	PART NO.	ITEM NO.
◎	Inch (metric)	5:1 A4	(UNLESS SPECIFIED)	FRANK	8/JUL/13	FWF12504-SXXBX4WSM	FWF12504
△	X.±.012(0.30)	X.±.008(0.20)	X.±.012(0.30)	CHECKED BY	8/JUL/13	FWF12504-SXXBX4WSM	FWF12504
	X.±.006(0.15)	X.±.006(0.15)	X.±.006(0.15)	DRAWN BY	8/JUL/13	FWF12504-SXXBX4WSM	FWF12504
	X.XXX±.004(0.10)	X.XXX±.004(0.10)	X.XXX±.004(0.10)	CHERRY	8/JUL/13	FWF12504-SXXBX4WSM	FWF12504



THIS DRAWING CONTAINS INFORMATION THAT IS PROPRIETARY TO TXGA INDUSTRIAL ELECTRONICS(SZ)CO.,LTD AND SHOULD NOT BE USED WITHOUT WRITTEN PERMISSION

REV 1 SHEET NO. 3/3

Pitch 1.25mm 90° Angle (SMT)

Wire to Board (Water)

X-ON Electronics

Largest Supplier of Electrical and Electronic Components

Click to view similar products for [Headers & Wire Housings](#) category:

Click to view products by [TXGA](#) manufacturer:

Other Similar products are found below :

[95000-104TRLF](#) [10135584-644402LF](#) [DF62W-EP2022PCA](#) [95000-106TRLF](#) [DF62W-2022SCA](#) [DF62W-EP2022PC](#) [2203348](#) [DF62W-2022SC](#) [1084018](#) [1029039](#) [1084017](#) [802-10-012-10-002000](#) [1112640](#) [1112639](#) [891-007-9SS-BST1T](#) [000-34000](#) [0008550134](#) [0009482033](#) [0009507031](#) [57102-F02-18ULF](#) [57102-S06-03LF](#) [57202-S52-04LF](#) [PCN6-15S-2.5E](#) [0039019024](#) [58102-G61-06LF](#) [582553-1](#) [0009485154](#) [0009508121](#) [0022285053](#) [0050291907](#) [018731A](#) [LY20-4P-DT1-P1E-BR](#) [02.125.8002.8](#) [60101931](#) [60598-1 \(Cut Strip\)](#) [M1625-3R/100](#) [61062-3](#) [61082-181009](#) [CSU011177004](#) [636-1427](#) [638009-1](#) [641938-9](#) [641991-4](#) [644168-1](#) [644827-2](#) [647662-1](#) [65039-019ELF](#) [65692-001LF](#) [65781-018](#) [65781-047](#)