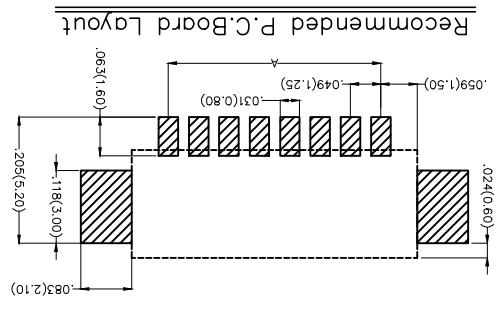
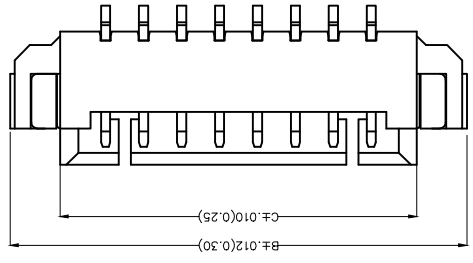
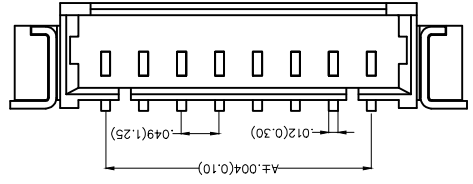
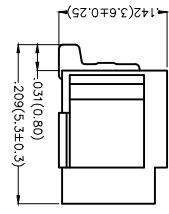


REV	LOCATIONS	DESCRIPTION	DATE	REVISER	APPD

Electrical
 Current Rating: 1.0A AC(rms)/DC
 Voltage Rating: 125V AC(rms)/DC
 Contact Resistance: 20 mΩ Max
 Insulation Resistance: 100 MΩ MIN
 Withstanding Voltage: 250V AC r.m.s
 Temperature Range—Operating: -25°C~+85°C
 Material and Plating
 Housing: PA9T (UL 94V-0)
 Contact Pin: Brass/ Tin plated
 Solder Tab: Copper alloy/ Tin plated



Ordering Information

FWF 125 04 - S XX B
 1 2 3 4 5 6 7 8 9 10
 M W5 M


1	Category	FWF-Wafer
2	Series Number	125-Pitch1.25mm
3	Distinction No.	04
4	Row Option	S-Single Row
5	Circuits	XX
6	Entry Angle	B-90° Angle
7	Plating	2-Tin Plated
8	Material-Resin	4-PA9T
9	Color-Resin	WS-Natural
10	Packaging	M-Reel

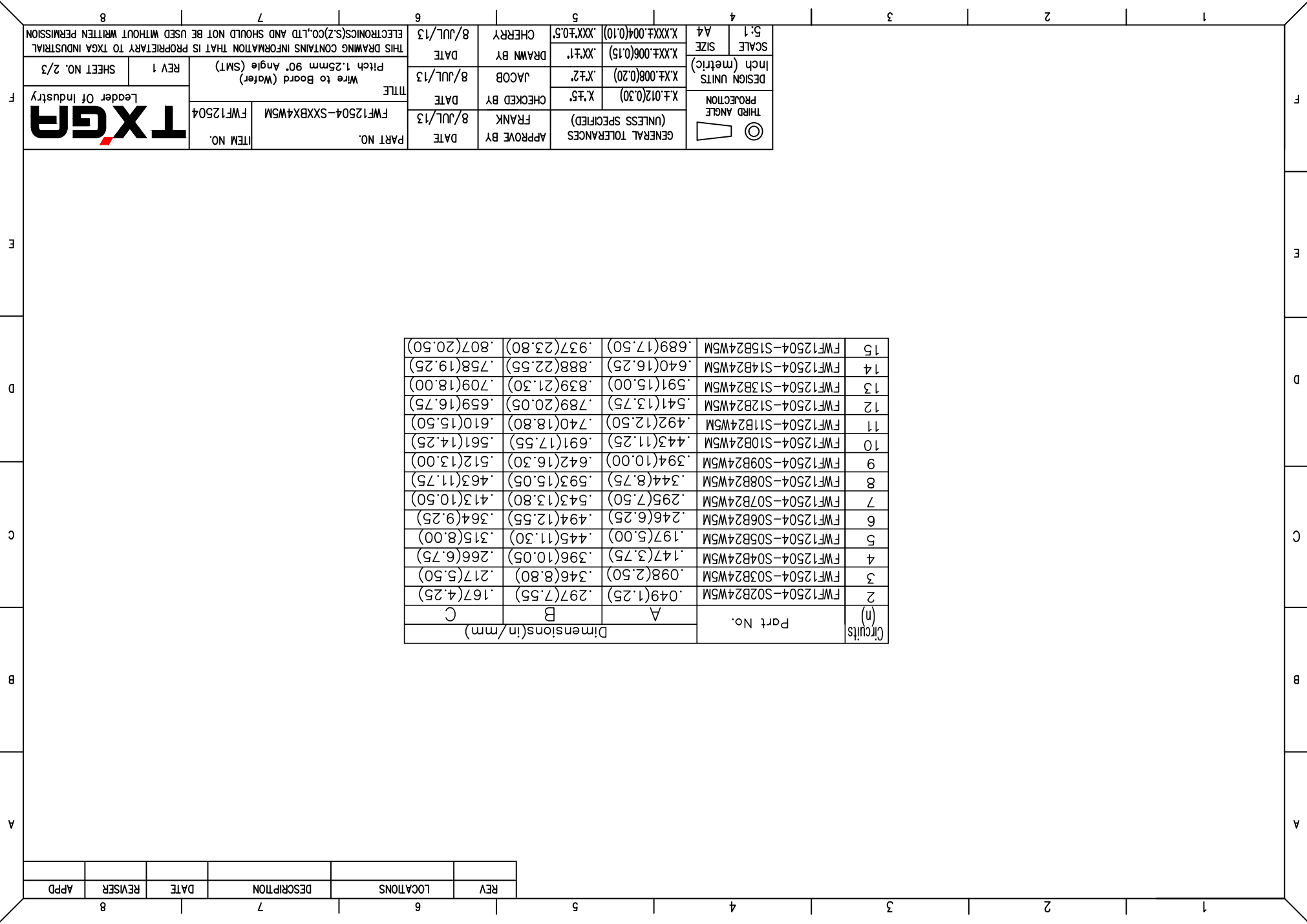
THIRD ANGLE PROJECTION	DESIGN UNITS	X.X±.008(0.20)	X.X±.012(0.30)	X.X±.006(0.15)	X.XXX±.004(0.10)
	SCALE	A4	A4	A4	A4
GENERAL TOLERANCES (UNLESS SPECIFIED)	APPROVE BY	FRANK	DATE	8/JUL/13	PART NO.
	CHECKED BY	JACOB	DATE	8/JUL/13	ITEM NO.
	DRAWN BY	CHERRY	DATE	8/JUL/13	FWF12504-SXXBXX4WSM
THIS DRAWING CONTAINS INFORMATION THAT IS PROPRIETARY TO TXGA INDUSTRIAL ELECTRONICS(SZ)CO.,LTD AND SHOULD NOT BE USED WITHOUT WRITTEN PERMISSION					



REV	LOCATIONS	DESCRIPTION	DATE	REVISER	APPD

Circuits (n)	Part No.	Dimensions(in/mm)		
		A	B	C
2	FWF12504-S02B24W5M	.049(1.25)	.297(7.55)	.167(4.25)
3	FWF12504-S03B24W5M	.098(2.50)	.346(8.80)	.217(5.50)
4	FWF12504-S04B24W5M	.147(3.75)	.396(10.05)	.266(6.75)
5	FWF12504-S05B24W5M	.197(5.00)	.445(11.30)	.315(8.00)
6	FWF12504-S06B24W5M	.246(6.25)	.494(12.55)	.364(9.25)
7	FWF12504-S07B24W5M	.295(7.50)	.543(13.80)	.413(10.50)
8	FWF12504-S08B24W5M	.344(8.75)	.593(15.05)	.463(11.75)
9	FWF12504-S09B24W5M	.394(10.00)	.642(16.30)	.512(13.00)
10	FWF12504-S10B24W5M	.443(11.25)	.691(17.55)	.561(14.25)
11	FWF12504-S11B24W5M	.492(12.50)	.740(18.80)	.610(15.50)
12	FWF12504-S12B24W5M	.541(13.75)	.789(20.05)	.659(16.75)
13	FWF12504-S13B24W5M	.591(15.00)	.839(21.30)	.709(18.00)
14	FWF12504-S14B24W5M	.640(16.25)	.888(22.55)	.758(19.25)
15	FWF12504-S15B24W5M	.689(17.50)	.937(23.80)	.807(20.50)

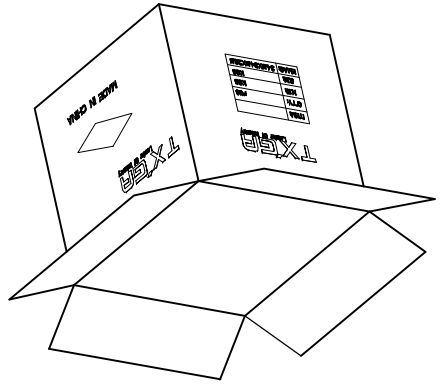
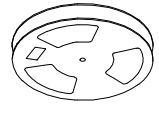
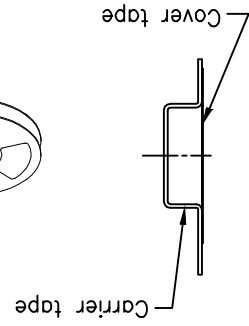
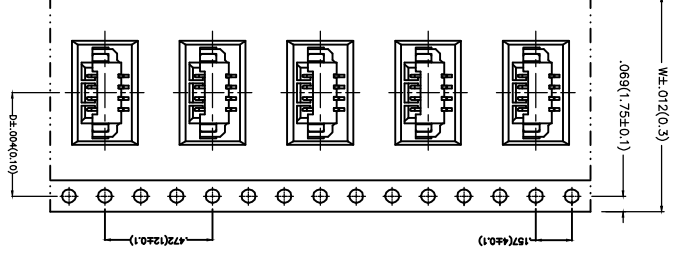
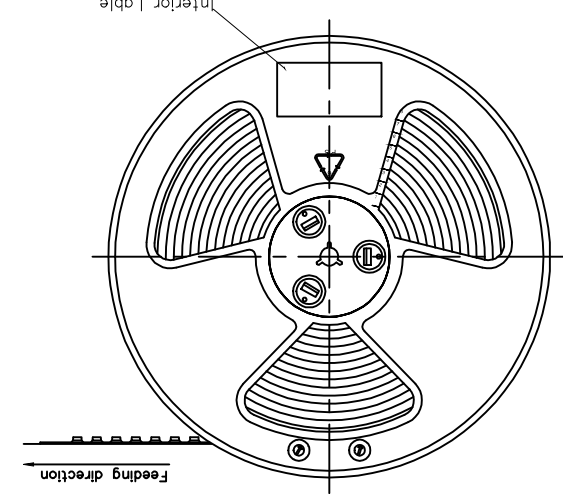
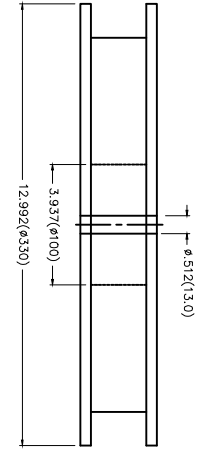
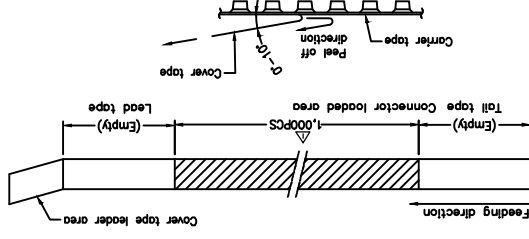
 THIRD ANGLE PROJECTION	DESIGN UNITS	X.±.008(0.20)	X.±.2	JACOB	8/JUL/13	PART NO. FWF12504-SXXBX4W5M ITEM NO. FWF12504 TITLE Wire to Board (Water) Pitch 1.25mm 90° Angle (SMT)	SCALE	5:1	GENERAL TOLERANCES (UNLESS SPECIFIED) APPROVE BY FRANK DATE 8/JUL/13	APPROVE BY	8/JUL/13	THIS DRAWING CONTAINS INFORMATION THAT IS PROPRIETARY TO TXGA INDUSTRIAL ELECTRONICS(SZ)CO.,LTD AND SHOULD NOT BE USED WITHOUT WRITTEN PERMISSION
	DESIGN UNITS	X.±.012(0.30)	X.±.5	CHECKED BY	8/JUL/13		DATE	8/JUL/13		SCALE	A4	



REV	LOCATIONS	DESCRIPTION	DATE	REVERSER	APPD
1	△	MPQ 1500PCS/Reel Change to 1000PCS/Reel	20150811	CHERRY	JACOB

Note:

1. 10 sprocket hole cumulative tolerance ±0.2
2. Carrier camber is within 1.0mm in 100mm
3. Material: White Conductive polystyrene Alloy 100% recyclable
4. All dimensions meet EIA-481-3 requirements
5. Component load per 15" reel: 1,000 pcs



Circuits	Dimensions(in./mm)	
	D	W
(h)		
2	.295(7.50)	.630(16.00)
3	.295(7.50)	.630(16.00)
4	.453(11.50)	.945(24.00)
5	.453(11.50)	.945(24.00)
6	.453(11.50)	.945(24.00)
7	.559(14.20)	1.260(32.00)
8	.559(14.20)	1.260(32.00)
9	.559(14.20)	1.260(32.00)



PART NO.	ITEM NO.
FWF12504-SXXBX4WSM	FWF12504

DATE	APPROVE BY	DATE	CHECKED BY	DATE	DRAWN BY
8/JUL/13	FRANK	8/JUL/13	X.F.5	8/JUL/13	JACOB
8/JUL/13		8/JUL/13	X.X.F.1	8/JUL/13	CHERRY

THIS DRAWING CONTAINS INFORMATION THAT IS PROPRIETARY TO TXGA INDUSTRIAL ELECTRONICS(S)Z)CO.,LTD AND SHOULD NOT BE USED WITHOUT WRITTEN PERMISSION

X-ON Electronics

Largest Supplier of Electrical and Electronic Components

Click to view similar products for [Headers & Wire Housings](#) category:

Click to view products by [TXGA](#) manufacturer:

Other Similar products are found below :

[95000-104TRLF](#) [10135584-644402LF](#) [DF62W-EP2022PCA](#) [95000-106TRLF](#) [DF62W-2022SCA](#) [DF62W-EP2022PC](#) [2203348](#) [DF62W-2022SC](#) [1084018](#) [1029039](#) [1084017](#) [802-10-012-10-002000](#) [1112640](#) [1112639](#) [891-007-9SS-BST1T](#) [000-34000](#) [0008550134](#) [0009482033](#) [0009507031](#) [57102-F02-18ULF](#) [57102-S06-03LF](#) [57202-S52-04LF](#) [PCN6-15S-2.5E](#) [0039019024](#) [58102-G61-06LF](#) [582553-1](#) [0009485154](#) [0009508121](#) [0022285053](#) [0050291907](#) [018731A](#) [LY20-4P-DT1-P1E-BR](#) [02.125.8002.8](#) [60101931](#) [60598-1 \(Cut Strip\)](#) [M1625-3R/100](#) [61062-3](#) [61082-181009](#) [CSU011177004](#) [636-1427](#) [638009-1](#) [641938-9](#) [641991-4](#) [644168-1](#) [644827-2](#) [647662-1](#) [65039-019ELF](#) [65692-001LF](#) [65781-018](#) [65781-047](#)