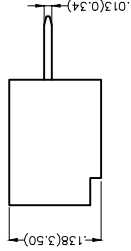
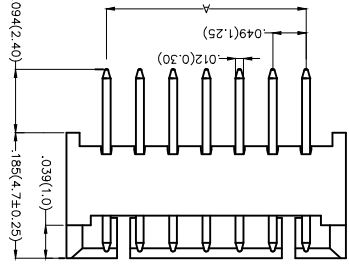
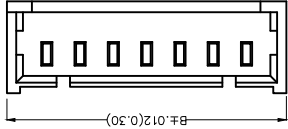


REV	LOCATIONS	DESCRIPTION	DATE	REVISER	APPD

Electrical
 Current Rating: 1.0A AC(rms)/DC
 Voltage Rating: 125V AC(rms)/DC
 Contact Resistance: 20 mΩ Max
 Insulation Resistance: 100 MΩ MIN
 Withstanding Voltage: 250V AC r.m.s
 Temperature Range—Operating: -25°C~+85°C
 Material and Plating
 Housing: PA46 (UL 94V-0)
 Contact Pin: Brass
 Plating: Tin Plated

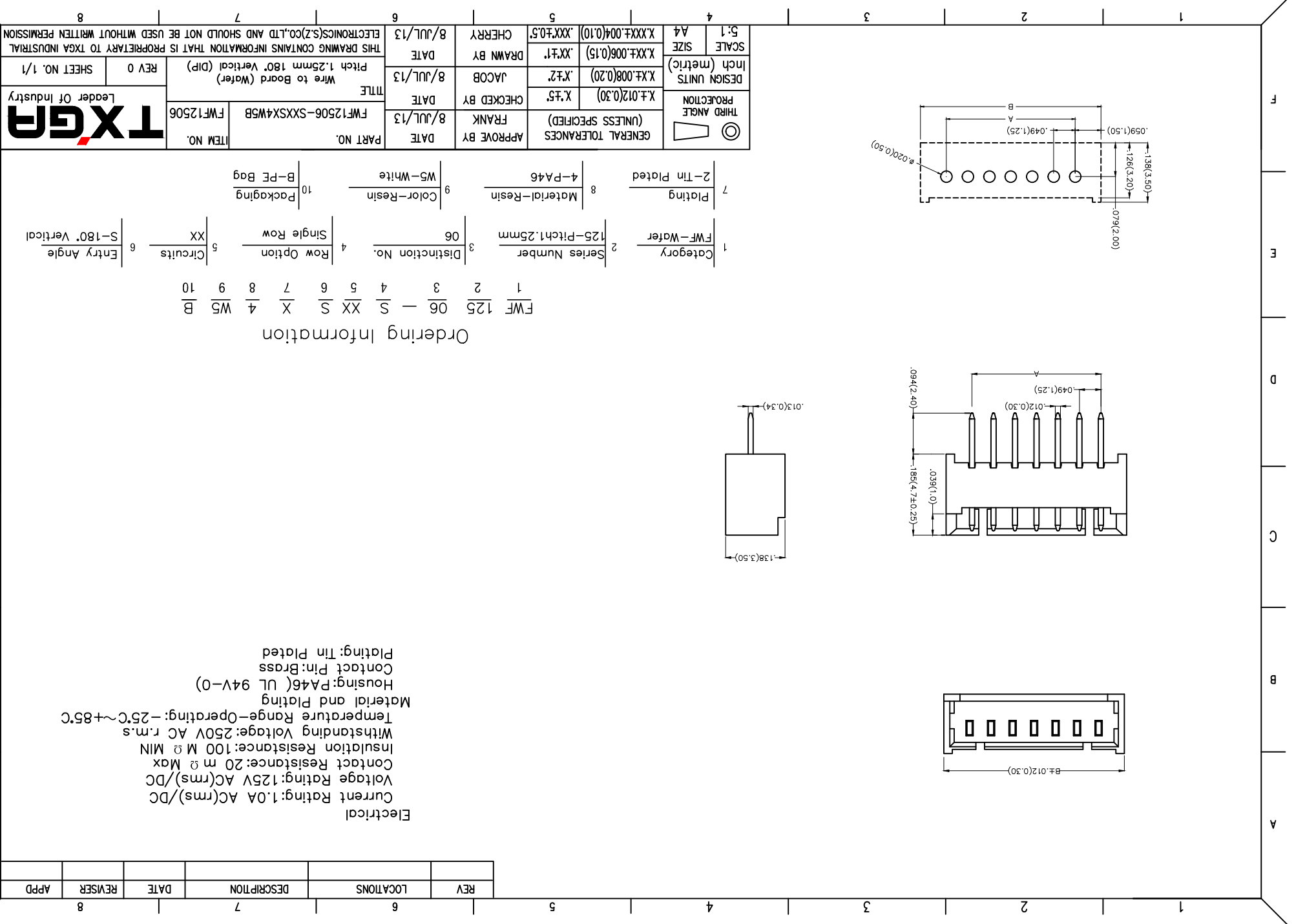
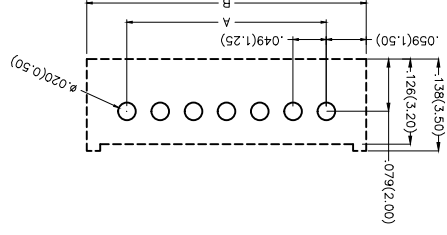


Ordering Information

FWF 125 06 - S XX S 4 WS B
 1 2 3 4 5 6 7 8 9 10

- 1 Category FWF-Water
- 2 Series Number 125-Pitch 1.25mm
- 3 Distinction No. 06
- 4 Row Option Single Row
- 5 Circuits XX
- 6 Entry Angle S-180° Vertical
- 7 Plating 2-Tin Plated
- 8 Material-Resin 4-PA46
- 9 Color-Resin WS-White
- 10 Packaging B-PE Bag


GENERAL TOLERANCES (UNLESS SPECIFIED)	APPROVE BY	DATE	PART NO.	ITEM NO.
FRANK	8/JUL/13	FWF12506-SXXXSX4WSB	FWF12506	
CHECKED BY	DATE	TITLE	Wire to Board (Water)	
JACOB	8/JUL/13	Pitch 1.25mm 180° Vertical (DIP)	REV 0 SHEET NO. 1/1	
DRAWN BY	DATE	THIS DRAWING CONTAINS INFORMATION THAT IS PROPRIETARY TO TXGA INDUSTRIAL ELECTRONICS(SZ)CO.,LTD AND SHOULD NOT BE USED WITHOUT WRITTEN PERMISSION		
CHEERY	8/JUL/13	X.XX±0.5		
SCALE	SIZE	X.XX±0.06(0.15)		
A4	A4	X.XX±0.04(0.10)		

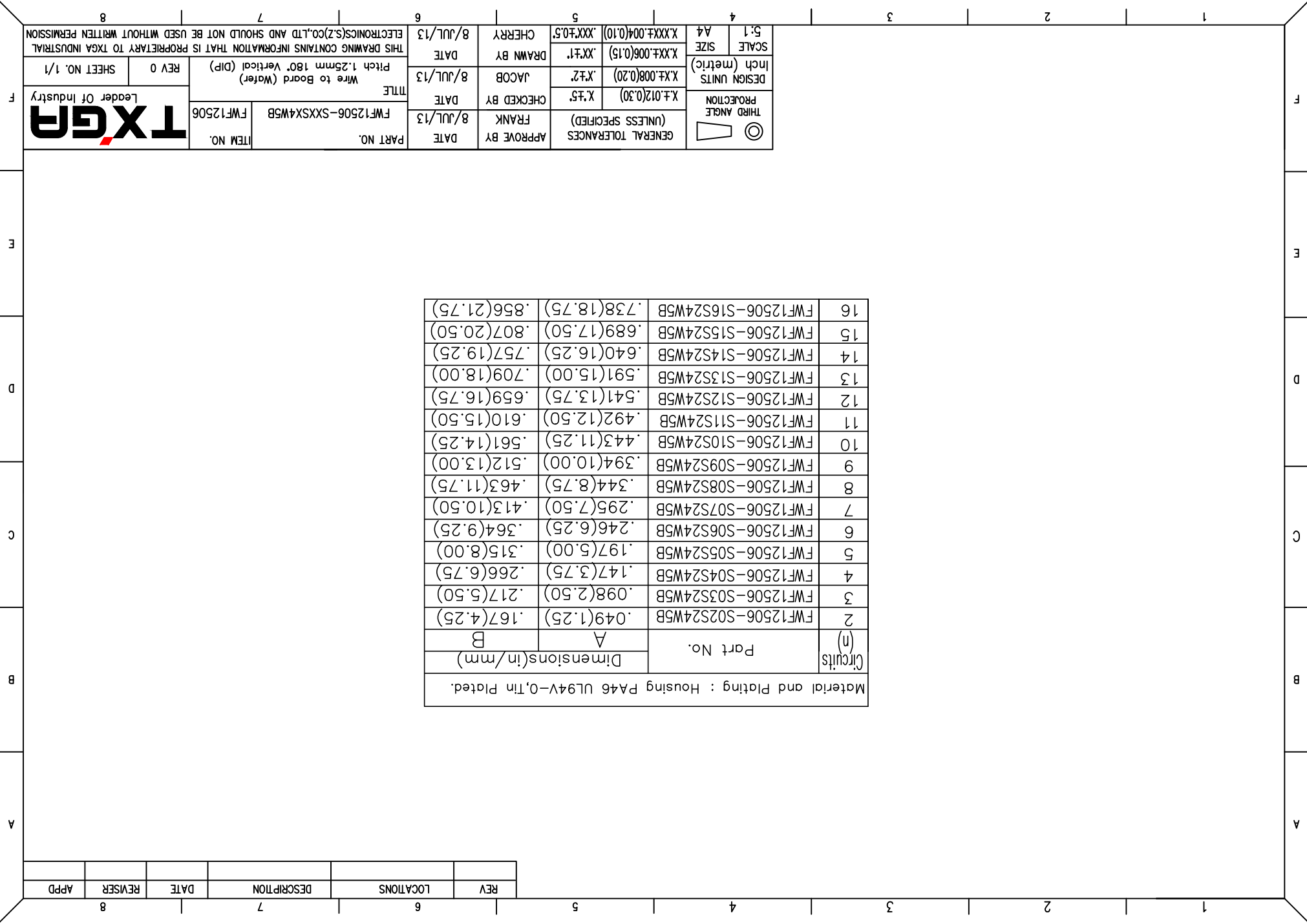


REV	LOCATIONS	DESCRIPTION	DATE	REVISER	APPD

Circuits (n)		Part No.	Dimensions(in/mm)	
A	B		A	B
2	FWF12506-S02S24W5B	.049(1.25)	.167(4.25)	
3	FWF12506-S03S24W5B	.098(2.50)	.217(5.50)	
4	FWF12506-S04S24W5B	.147(3.75)	.266(6.75)	
5	FWF12506-S05S24W5B	.197(5.00)	.315(8.00)	
6	FWF12506-S06S24W5B	.246(6.25)	.364(9.25)	
7	FWF12506-S07S24W5B	.295(7.50)	.413(10.50)	
8	FWF12506-S08S24W5B	.344(8.75)	.463(11.75)	
9	FWF12506-S09S24W5B	.394(10.00)	.512(13.00)	
10	FWF12506-S10S24W5B	.443(11.25)	.561(14.25)	
11	FWF12506-S11S24W5B	.492(12.50)	.610(15.50)	
12	FWF12506-S12S24W5B	.541(13.75)	.659(16.75)	
13	FWF12506-S13S24W5B	.591(15.00)	.709(18.00)	
14	FWF12506-S14S24W5B	.640(16.25)	.757(19.25)	
15	FWF12506-S15S24W5B	.689(17.50)	.807(20.50)	
16	FWF12506-S16S24W5B	.738(18.75)	.856(21.75)	

Material and Plating : Housing P46 UL94V-0,Tin Plated.

 THIRD ANGLE PROJECTION		GENERAL TOLERANCES (UNLESS SPECIFIED) APPROVE BY FRANK DATE 8/JUL/13 CHECKED BY JACOB DATE 8/JUL/13 DRAWN BY CHERRY DATE 8/JUL/13	PART NO. FWF12506-SXXX4W5B ITEM NO. FWF12506 TITLE Wire to Board (Water) Pitch 1.25mm 180° Vertical (DIP)	REV 0 SHEET NO. 1/1 THIS DRAWING CONTAINS INFORMATION THAT IS PROPRIETARY TO TXGA INDUSTRIAL ELECTRONICS(SZ)CO.,LTD AND SHOULD NOT BE USED WITHOUT WRITTEN PERMISSION
SCALE 5:1 A4	DESIGN UNITS Inch (metric)	GENERAL TOLERANCES (UNLESS SPECIFIED)	DESIGN UNITS Inch (metric)	SCALE 5:1 A4
X±.012(0.30)	X±.008(0.20)	X±.012(0.30)	X±.008(0.20)	X±.006(0.15)
X±.004(0.10)	X±.004(0.10)	X±.004(0.10)	X±.004(0.10)	X±.004(0.10)



X-ON Electronics

Largest Supplier of Electrical and Electronic Components

Click to view similar products for [Headers & Wire Housings](#) category:

Click to view products by [TXGA](#) manufacturer:

Other Similar products are found below :

[95000-104TRLF](#) [10135584-644402LF](#) [DF62W-EP2022PCA](#) [95000-106TRLF](#) [DF62W-2022SCA](#) [DF62W-EP2022PC](#) [2203348](#) [DF62W-2022SC](#) [1084018](#) [1029039](#) [1084017](#) [802-10-012-10-002000](#) [1112640](#) [1112639](#) [891-007-9SS-BST1T](#) [000-34000](#) [0008550134](#) [0009482033](#) [0009507031](#) [57102-F02-18ULF](#) [57102-S06-03LF](#) [57202-S52-04LF](#) [PCN6-15S-2.5E](#) [0039019024](#) [58102-G61-06LF](#) [582553-1](#) [0009485154](#) [0009508121](#) [0022285053](#) [0050291907](#) [018731A](#) [LY20-4P-DT1-P1E-BR](#) [02.125.8002.8](#) [60101931](#) [60598-1 \(Cut Strip\)](#) [M1625-3R/100](#) [61062-3](#) [61082-181009](#) [CSU011177004](#) [636-1427](#) [638009-1](#) [641938-9](#) [641991-4](#) [644168-1](#) [644827-2](#) [647662-1](#) [65039-019ELF](#) [65692-001LF](#) [65781-018](#) [65781-047](#)