

REV	LOCATIONS	DESCRIPTION	DATE	REVISER	APPD

Electrical
 Current Rating: 1.0A AC(rms)/DC
 Voltage Rating: 125V AC(rms)/DC
 Contact Resistance: 20 mΩ Max
 Insulation Resistance: 100 MΩ MIN
 Withstanding Voltage: 250V AC r.m.s
 Temperature Range—Operating: -25°C~+85°C
 Material and Plating
 Housing: PA46 (UL 94V-0)
 Contact Pin: Brass
 Plating: Tin Plated

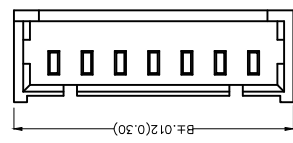
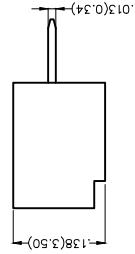
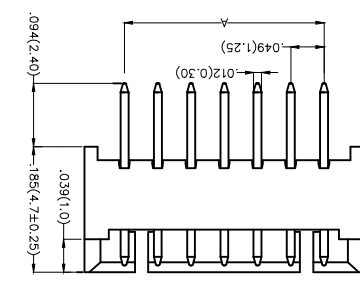
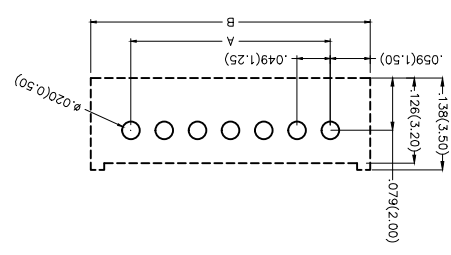
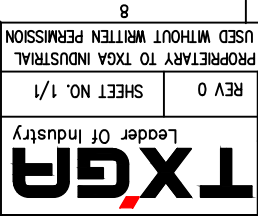
Ordering Information

FWF 125 06 - S XX S 4 WS B
 1 2 3 4 5 6 7 8 9 10

1	Category	FWF-Water
2	Series Number	125-Pitch1.25mm
3	Distinction No.	06
4	Row Option	Single Row
5	Circuits	XX
6	Entry Angle	S-180° Vertical
7	Plating	2-Tin Plated
8	Material-Resin	4-PA46
9	Color-Resin	WS-White
10	Packaging	B-PE Bag


GENERAL TOLERANCES (UNLESS SPECIFIED)	APPROVE BY	DATE	PART NO.	ITEM NO.
X.±.012(0.30)	FRANK	8/JUL/13	FWF12506-SXXSX4WSB	FWF12506
X.±.008(0.20)	CHECKED BY	DATE	TITLE	
X.±.006(0.15)	JACOB	8/JUL/13	Wire to Board (Water) Pitch 1.25mm 180° Vertical (DIP)	
X.XX±.004(0.10)	DRAWN BY	DATE	REV 0	SHEET NO. 1/1
A4	CHEERY	8/JUL/13	THIS DRAWING CONTAINS INFORMATION THAT IS PROPRIETARY TO TXGA INDUSTRIAL ELECTRONICS(SZ)CO.,LTD AND SHOULD NOT BE USED WITHOUT WRITTEN PERMISSION	

THIRD ANGLE PROJECTION	DESIGN UNITS	SCALE
X.±.012(0.30)	Inch (metric)	5:1
X.±.008(0.20)		A4
X.XX±.006(0.15)		



REV	LOCATIONS	DESCRIPTION	DATE	REVISER	APPD

Material and Plating : Housing P46 UL94V-0,Tin Plated.		
Circuits (n)	Part No.	Dimensions(in/mm)
		A
2	FWF12506-S02S24W5B	.167(4.25)
3	FWF12506-S03S24W5B	.217(5.50)
4	FWF12506-S04S24W5B	.147(3.75)
5	FWF12506-S05S24W5B	.197(5.00)
6	FWF12506-S06S24W5B	.246(6.25)
7	FWF12506-S07S24W5B	.295(7.50)
8	FWF12506-S08S24W5B	.344(8.75)
9	FWF12506-S09S24W5B	.394(10.00)
10	FWF12506-S10S24W5B	.443(11.25)
11	FWF12506-S11S24W5B	.492(12.50)
12	FWF12506-S12S24W5B	.541(13.75)
13	FWF12506-S13S24W5B	.591(15.00)
14	FWF12506-S14S24W5B	.640(16.25)
15	FWF12506-S15S24W5B	.689(17.50)
16	FWF12506-S16S24W5B	.738(18.75)

GENERAL TOLERANCES (UNLESS SPECIFIED)		APPROVE BY	DATE	PART NO.	ITEM NO.
 THIRD ANGLE PROJECTION	X.±.012(0.30)	FRANK	8/JUL/13	FWF12506-SXXXSX4W5B	FWF12506
	X.±.008(0.20)	CHECKED BY	DATE	TITLE	
X.±.006(0.15)	JACOB	8/JUL/13	Wire to Board (Water) Pitch 1.25mm 180° Vertical (DIP)		
X.±.004(0.10)	DRAWN BY	DATE	THIS DRAWING CONTAINS INFORMATION THAT IS PROPRIETARY TO TXGA INDUSTRIAL ELECTRONICS(SZ)CO.,LTD AND SHOULD NOT BE USED WITHOUT WRITTEN PERMISSION		
A4	CHEERY	8/JUL/13	REV 0 SHEET NO. 1/1		
5:1	SCALE	Leader Of Industry			

8	7	6	5	4	3	2	1
---	---	---	---	---	---	---	---

8	7	6	5	4	3	2	1
---	---	---	---	---	---	---	---

A B C D E F

A B C D E F

X-ON Electronics

Largest Supplier of Electrical and Electronic Components

Click to view similar products for [Headers & Wire Housings](#) category:

Click to view products by [TXGA](#) manufacturer:

Other Similar products are found below :

[95000-104TRLF](#) [10135584-644402LF](#) [DF62W-EP2022PCA](#) [95000-106TRLF](#) [DF62W-2022SCA](#) [DF62W-EP2022PC](#) [2203348](#) [DF62W-2022SC](#) [1084018](#) [1029039](#) [1084017](#) [802-10-012-10-002000](#) [1112640](#) [1112639](#) [891-007-9SS-BST1T](#) [000-34000](#) [0008550134](#) [0009482033](#) [0009507031](#) [57102-F02-18ULF](#) [57102-S06-03LF](#) [57202-S52-04LF](#) [PCN6-15S-2.5E](#) [0039019024](#) [58102-G61-06LF](#) [582553-1](#) [0009485154](#) [0009508121](#) [0022285053](#) [0050291907](#) [018731A](#) [LY20-4P-DT1-P1E-BR](#) [02.125.8002.8](#) [60101931](#) [60598-1 \(Cut Strip\)](#) [M1625-3R/100](#) [61062-3](#) [61082-181009](#) [CSU011177004](#) [636-1427](#) [638009-1](#) [641938-9](#) [641991-4](#) [644168-1](#) [644827-2](#) [647662-1](#) [65039-019ELF](#) [65692-001LF](#) [65781-018](#) [65781-047](#)