

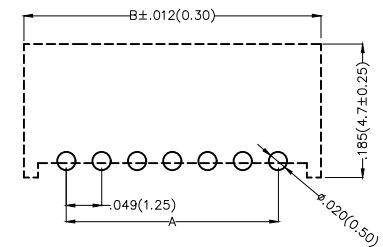
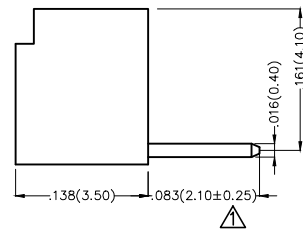
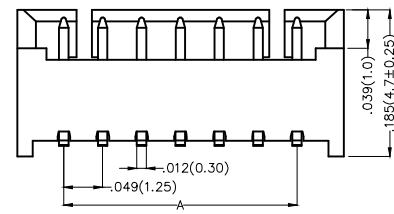
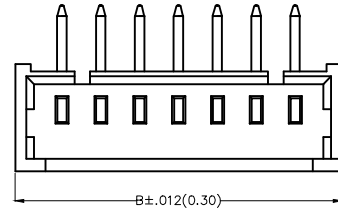
REV	LOCATIONS	DESCRIPTION	DATE	REVISER	APPD
1	△	Tolerances change	25/MAY/20	KATE	CHERRY

Electrical

Current Rating: 1.0A AC(rms)/DC
Voltage Rating: 125V AC(rms)/DC
Contact Resistance: 20 mΩ Max
Insulation Resistance: 100 MΩ MIN
Withstanding Voltage: 250V AC r.m.s
Temperature Range—Operating: -25°C~+85°C

Material and Plating

Housing: PA46(UL 94V-0)
Contact Pin: Brass
Plating: Full tin



Recommended P.C.Board Layout

Ordering Information

FWF 125 07 — S XX B X 4 W5 B
1 2 3 4 5 6 7 8 9 10

1 Category FWF—Wafer	2 Series Number 125—Pitch1.25mm	3 Distinction No. 07	4 Row Option S—Single Row	5 Circuits XX	6 Entry Angle B—90° Angle
7 Plating 2—Tin Plated	8 Material—Resin 4—PA46	9 Color—Resin W5—White	10 Packaging B—PE Bag		

 THIRD ANGLE PROJECTION	GENERAL TOLERANCES (UNLESS SPECIFIED)		APPROVE BY FRANK	DATE 8/JUL/13	PART NO. FWF12507—SXXBX4W5B	ITEM NO. FWF12507	 Leader Of Industry	
	DESIGN UNITS Inch (metric)	X.±.012(0.30) X.X±.008(0.20)	X.±5° .X'±2'	CHECKED BY JACOB	DATE 8/JUL/13	TITLE Wire to Board (Wafer) Pitch 1.25mm 90° Angle (DIP)		REV 1
SCALE 5:1	SIZE A4	X.XX±.006(0.15) X.XXX±.004(0.10)	.XX'±1° .XXX'±0.5°	DRAWN BY CHERRY	DATE 8/JUL/13	THIS DRAWING CONTAINS INFORMATION THAT IS PROPRIETARY TO TXGA INDUSTRIAL ELECTRONICS(S.Z)CO.,LTD AND SHOULD NOT BE USED WITHOUT WRITTEN PERMISSION		

1 2 3 4 5 6 7 8

REV	LOCATIONS	DESCRIPTION	DATE	REVISER	APPD

A

A

B

B

C

C

D

D



E

E

F

F

Circuits (n)	Part No.	Dimensions(in/mm)	
		A	B
2	FWF12507-S02B24W5B	.049(1.25)	.167(4.25)
3	FWF12507-S03B24W5B	.098(2.50)	.217(5.50)
4	FWF12507-S04B24W5B	.147(3.75)	.266(6.75)
5	FWF12507-S05B24W5B	.197(5.00)	.315(8.00)
6	FWF12507-S06B24W5B	.246(6.25)	.364(9.25)
7	FWF12507-S07B24W5B	.295(7.50)	.413(10.50)
8	FWF12507-S08B24W5B	.344(8.75)	.463(11.75)
9	FWF12507-S09B24W5B	.394(10.00)	.512(13.00)
10	FWF12507-S10B24W5B	.443(11.25)	.561(14.25)
11	FWF12507-S11B24W5B	.492(12.50)	.610(15.50)
12	FWF12507-S12B24W5B	.541(13.75)	.659(16.75)
13	FWF12507-S13B24W5B	.591(15.00)	.709(18.00)
14	FWF12507-S14B24W5B	.640(16.25)	.757(19.25)
15	FWF12507-S15B24W5B	.689(17.50)	.807(20.50)

 THIRD ANGLE PROJECTION	GENERAL TOLERANCES (UNLESS SPECIFIED)		APPROVE BY FRANK	DATE 8/JUL/13	PART NO. FWF12507-SXXBX4W5B	ITEM NO. FWF12507	 Leader Of Industry	
	DESIGN UNITS Inch (metric)	X.±.012(0.30) X.X±.008(0.20) X.XX±.006(0.15) X.XXX±.004(0.10)	X.±5° .X'±2° .XX'±1° .XXX'±0.5°	CHECKED BY JACOB	DATE 8/JUL/13	TITLE Wire to Board (Wafer) Pitch 1.25mm 90° Angle (DIP)		
SCALE 5:1	SIZE A4		DRAWN BY CHERRY	DATE 8/JUL/13	THIS DRAWING CONTAINS INFORMATION THAT IS PROPRIETARY TO TXGA INDUSTRIAL ELECTRONICS(S.Z)CO.,LTD AND SHOULD NOT BE USED WITHOUT WRITTEN PERMISSION		REV 1	SHEET NO. 2/2

1 2 3 4 5 6 7 8

X-ON Electronics

Largest Supplier of Electrical and Electronic Components

Click to view similar products for [Headers & Wire Housings](#) category:

Click to view products by [TXGA](#) manufacturer:

Other Similar products are found below :

[0015917161](#) [0022155065](#) [57102-F02-18ULF](#) [58102-G61-06LF](#) [582553-1](#) [01.001.5753.1](#) [0050291907](#) [02.125.8002.8](#) [609-3404](#) [61062-3](#)
[CSU011177004](#) [622-0430](#) [622-3653LF](#) [63453-116](#) [636-1030](#) [636-1427](#) [636-3427](#) [636-4007](#) [641938-9](#) [65495-038](#) [65692-001LF](#) [65781-018](#)
[65781-047](#) [65817-010LF](#) [65817-015LF](#) [67095-007LF](#) [67601157](#) [68631-112](#) [68645-018](#) [699319-000](#) [70.362.1628.0](#) [70-4210](#) [70-4226B](#) [70-](#)
[4853B](#) [71.350.2428.0](#) [733-134](#) [733-162](#) [760-3052](#) [MHR-64-VUAL](#) [80.063.4001.1](#) [800-90-001-10-001000](#) [801-43-002-10-013000](#)
[801-43-006-10-002000](#) [803-43-024-10-001000](#) [803-93-012-10-001000](#) [8-1437020-4](#) [819-22-004-30-001101](#) [820-22-006-30-001101](#)
[820-22-008-30-001101](#) [821-22-002-10-001101](#)