

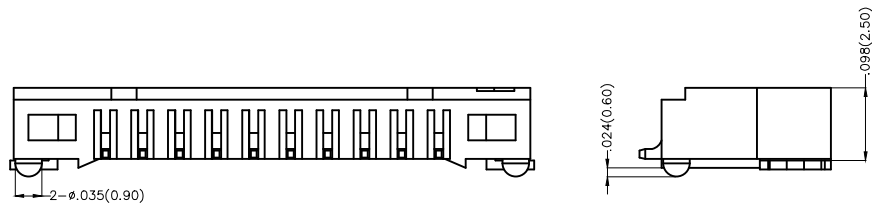
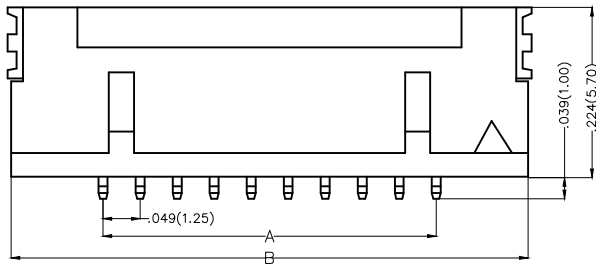
REV	LOCATIONS	DESCRIPTION	DATE	REVISER	APPD
1	▲	MPQ: Change 1,000 pcs into 1,500 pcs / reel	24/FEB/20	KATE	CHERRY

Electrical

Current Rating: 1.0A AC(rms)/DC  
Voltage Rating: 150V AC(rms)/DC  
Contact Resistance: 30 m Ω Max  
Insulation Resistance: 500 M Ω MIN  
Withstanding Voltage: 500V AC r.m.s  
Temperature Range-Operating: -25°C~+85°C

Material and Plating

Housing: PA9T( UL 94V-0)  
Contact Pin: Brass  
Plating: Full tin

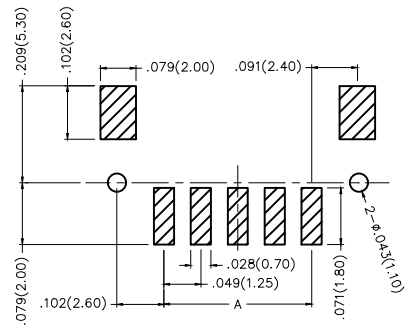


Material and Plating : Housing PA9T UL94V-0, Tin-Plated all.			
Circuits (n)	Part No.	Dimensions(in/mm)	
		A	B
20	FWF12508-S20B24W5M	.935(23.75)	1.179(29.95)
30	FWF12508-S30B24W5M	1.427(36.25)	1.671(42.45)

Ordering Information

FWF 125 08 - S XX B X 4 W5 M  
1 2 3 4 5 6 7 8 9 10

1 Category FWF-Wafer	2 Series Number 125-Pitch1.25mm	3 Distinction No. 08	4 Row Option Single Row	5 Circuits XX	6 Entry Angle B-90° Angle
7 Plating 2-Tin Plated	8 Material-Resin 4-PA9T	9 Color-Resin W5-White	10 Packaging M-Reel		

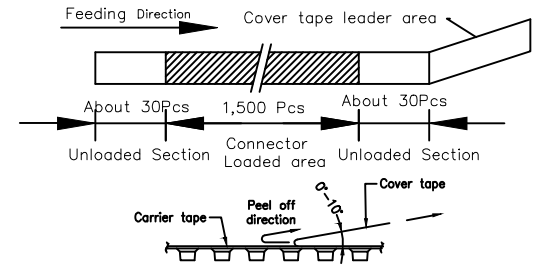
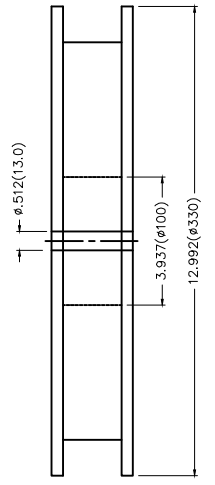
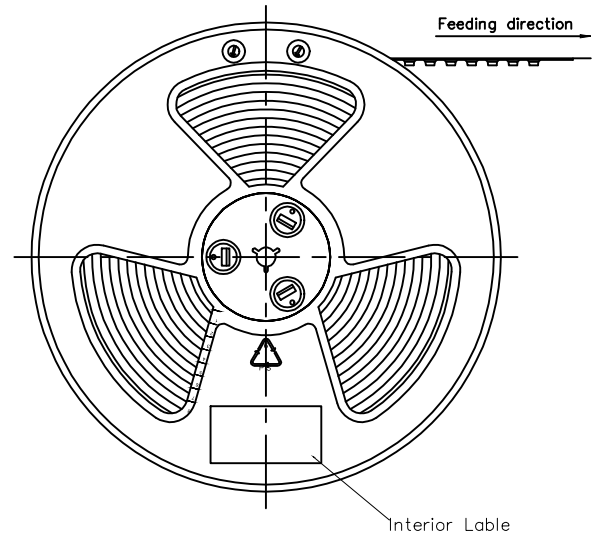


Recommended P.C.Board Layout

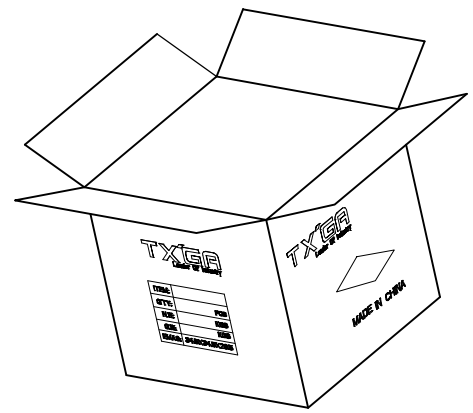
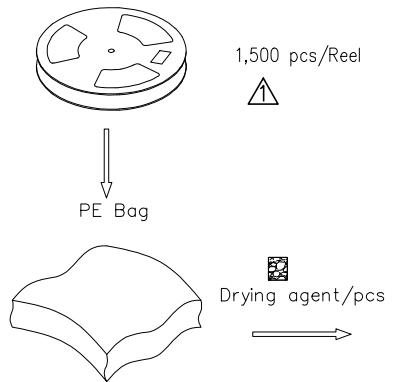
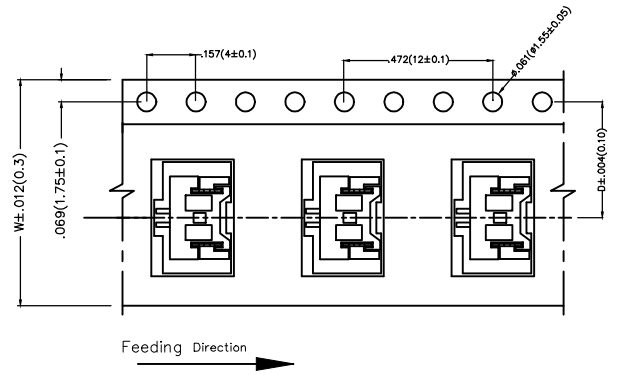
 THIRD ANGLE PROJECTION	GENERAL TOLERANCES (UNLESS SPECIFIED)		APPROVE BY FRANK	DATE 8/JUL/13	PART NO. FWF12508-SXXBX4W5M	ITEM NO. FWF12508	 Leader Of Industry	
	DESIGN UNITS Inch (metric)	X.±.012(0.30) X.X±.008(0.20)	X.±5° .X±2°	CHECKED BY JACOB	DATE 8/JUL/13	TITLE Wire to Board (Wafer) Pitch 1.25mm 90° Angle (SMT)		REV 1
SCALE 5:1	SIZE A4	X.XX±.006(0.15) X.XXX±.004(0.10)	.XX±1° .XXX±0.5°	DRAWN BY CHERRY	DATE 8/JUL/13	THIS DRAWING CONTAINS INFORMATION THAT IS PROPRIETARY TO TXGA INDUSTRIAL ELECTRONICS(S.Z)CO.,LTD AND SHOULD NOT BE USED WITHOUT WRITTEN PERMISSION		

REV	LOCATIONS	DESCRIPTION	DATE	REVISER	APPD

- Note:
- 10 sprocket hole cumulative tolerance  $\pm 0.2$
  - Carrier camber is within 1.0mm in 100mm
  - Material: White Conductive polystyrene Alloy 100% recyclable
  - All dimensions meet EIA-481-3 requirements
  - Component load per 13" reel: 1,500 pcs



Circuits (n)	Dimensions(in/mm)	
	D	W
20	.559(14.20)	1.260(32.00)
30	.795(20.20)	1.732(44.00)



 THIRD ANGLE PROJECTION	GENERAL TOLERANCES (UNLESS SPECIFIED)		APPROVE BY FRANK	DATE 8/JUL/13	PART NO. FWF12508-SXXBX4W5M	ITEM NO. FWF12508	 Leader Of Industry	
	DESIGN UNITS Inch (metric)	X. $\pm$ .012(0.30)	X. $\pm$ 5'	CHECKED BY JACOB	DATE 8/JUL/13	TITLE Wire to Board (Wafer) Pitch 1.25mm 90° Angle (SMT)		REV 1
	SCALE 5:1	X.XX $\pm$ .008(0.20)	.X $\pm$ 2'	DRAWN BY CHERRY	DATE 8/JUL/13	THIS DRAWING CONTAINS INFORMATION THAT IS PROPRIETARY TO TXGA INDUSTRIAL ELECTRONICS(S.Z)CO.,LTD AND SHOULD NOT BE USED WITHOUT WRITTEN PERMISSION		
	SIZE A4	X.XX $\pm$ .006(0.15)	.XX $\pm$ 1'					

## X-ON Electronics

Largest Supplier of Electrical and Electronic Components

*Click to view similar products for [Headers & Wire Housings](#) category:*

*Click to view products by [TXGA](#) manufacturer:*

Other Similar products are found below :

[0015917161](#) [0022155065](#) [57102-F02-18ULF](#) [58102-G61-06LF](#) [582553-1](#) [01.001.5753.1](#) [0050291907](#) [02.125.8002.8](#) [609-3404](#) [61062-3](#)  
[CSU011177004](#) [622-0430](#) [622-3653LF](#) [63453-116](#) [636-1030](#) [636-1427](#) [636-3427](#) [636-4007](#) [641938-9](#) [65495-038](#) [65692-001LF](#) [65781-018](#)  
[65781-047](#) [65817-010LF](#) [65817-015LF](#) [67095-007LF](#) [67601157](#) [68631-112](#) [68645-018](#) [699319-000](#) [70.362.1628.0](#) [70-4210](#) [70-4226B](#) [70-](#)  
[4853B](#) [71.350.2428.0](#) [733-134](#) [733-162](#) [760-3052](#) [MHR-64-VUAL](#) [80.063.4001.1](#) [800-90-001-10-001000](#) [801-43-002-10-013000](#)  
[801-43-006-10-002000](#) [803-43-024-10-001000](#) [803-93-012-10-001000](#) [8-1437020-4](#) [819-22-004-30-001101](#) [820-22-006-30-001101](#)  
[820-22-008-30-001101](#) [821-22-002-10-001101](#)