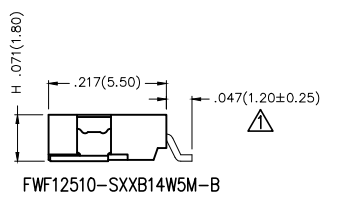
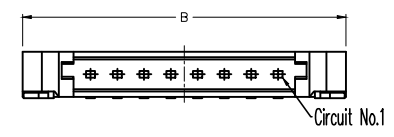
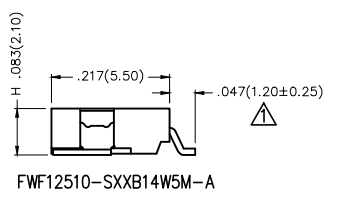
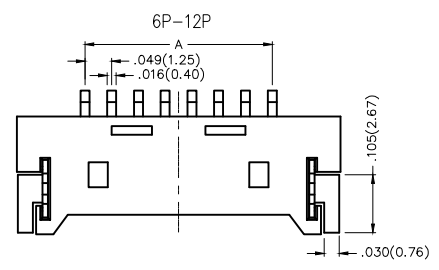
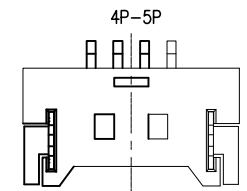
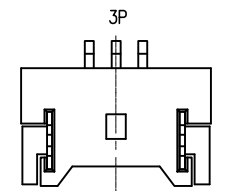
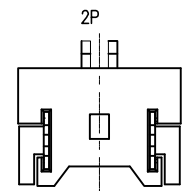


REV	LOCATIONS	DESCRIPTION	DATE	REVISER	APPD
1	△	Size change	05/JUN/19	KATE	FRANK



**Electrical**  
 Current Rating: 1.0A AC(rms)/DC  
 Voltage Rating: 125V AC(rms)/DC  
 Contact Resistance: 20 m Ω Max  
 Insulation Resistance: 100 M Ω MIN  
 Withstanding Voltage: 250V AC r.m.s  
 Temperature Range-Operating: -25°C ~ +85°C

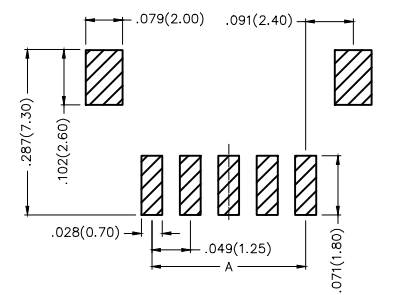
**Material and Plating**  
 Housing: PA9T( UL 94V-0)  
 Contact Pin: Brass  
 Plating: Gold Plated



**Ordering Information**

FWF 125 10 - S XX B 1 4 W5 M - X  
 1 2 3 4 5 6 7 8 9 10 11

1	Category FWF-Wafer	2	Series Number 125-Pitch1.25mm	3	Distinction No. 10	4	Row Option S-Single Row	5	Circuits XX	6	Entry Angle B-90° Angle
7	Plating 1-Gold plated	8	Material-Resin 4-PA9T	9	Color-Resin W5-White	10	Packaging M-Reel	11	Base height A-H=2.1mm B-H=1.8mm		



Recommended P.C.Board Layout

 THIRD ANGLE PROJECTION	GENERAL TOLERANCES (UNLESS SPECIFIED)		APPROVE BY FRANK	DATE 8/JUL/13	PART NO. FWF12510-SXXB14W5M-X	ITEM NO. FWF12510	 Leader Of Industry	
	X.±.012(0.30)	X.±5'	CHECKED BY JACOB	DATE 8/JUL/13	TITLE Wire to Board (Wafer) Pitch 1.25mm 90° Angle (SMT)			REV 1
	DESIGN UNITS Inch (metric)	X.X±.008(0.20)	.X±2'	DRAWN BY CHERRY	DATE 8/JUL/13	THIS DRAWING CONTAINS INFORMATION THAT IS PROPRIETARY TO TXGA INDUSTRIAL ELECTRONICS(S.Z)CO.,LTD AND SHOULD NOT BE USED WITHOUT WRITTEN PERMISSION		
	SCALE 5:1	SIZE A4	X.XX±.006(0.15)	.XX±1'				

1 2 3 4 5 6 7 8

REV	LOCATIONS	DESCRIPTION	DATE	REVISER	APPD

A

A

B

B

C

C

D

D



E

E

F

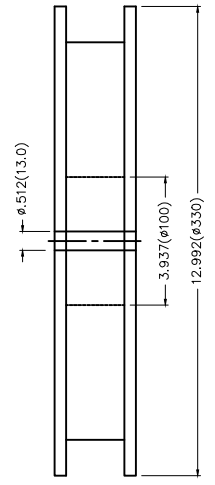
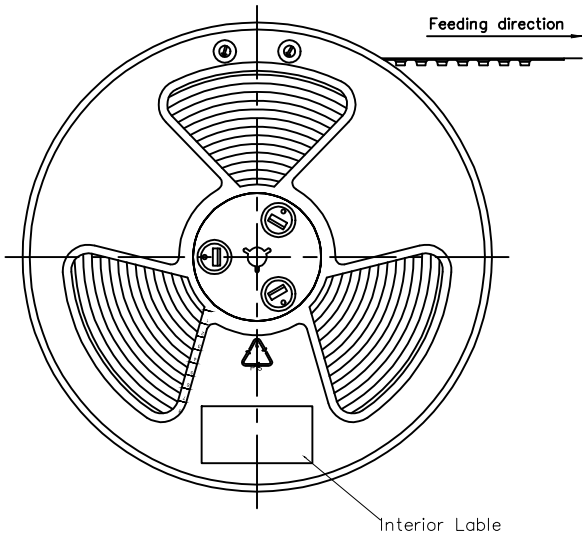
F

Circuits (n)	Part No.	Dimensions(in/mm)		Circuits (n)	Part No.	Dimensions(in/mm)	
		A	B			A	B
2	FWF12510-S02B14W5M-A	.049(1.25)	.301(7.65)	2	FWF12510-S02B14W5M-B	.049(1.25)	.301(7.65)
3	FWF12510-S03B14W5M-A	.098(2.50)	.350(8.90)	3	FWF12510-S03B14W5M-B	.098(2.50)	.350(8.90)
4	FWF12510-S04B14W5M-A	.147(3.75)	.400(10.15)	4	FWF12510-S04B14W5M-B	.147(3.75)	.400(10.15)
5	FWF12510-S05B14W5M-A	.197(5.00)	.449(11.40)	5	FWF12510-S05B14W5M-B	.197(5.00)	.449(11.40)
6	FWF12510-S06B14W5M-A	.246(6.25)	.498(12.65)	6	FWF12510-S06B14W5M-B	.246(6.25)	.498(12.65)
7	FWF12510-S07B14W5M-A	.295(7.50)	.547(13.90)	7	FWF12510-S07B14W5M-B	.295(7.50)	.547(13.90)
8	FWF12510-S08B14W5M-A	.344(8.75)	.596(15.15)	8	FWF12510-S08B14W5M-B	.344(8.75)	.596(15.15)
9	FWF12510-S09B14W5M-A	.394(10.00)	.646(16.40)	9	FWF12510-S09B14W5M-B	.394(10.00)	.646(16.40)
10	FWF12510-S10B14W5M-A	.443(11.25)	.695(17.65)	12	FWF12510-S12B14W5M-B	.541(13.75)	.793(20.15)
11	FWF12510-S11B14W5M-A	.492(12.50)	.744(18.90)	14	FWF12510-S14B14W5M-B	.640(16.25)	.892(22.65)
12	FWF12510-S12B14W5M-A	.541(13.75)	.793(20.15)				
14	FWF12510-S14B14W5M-A	.640(16.25)	.892(22.65)				
15	FWF12510-S15B14W5M-A	.689(17.50)	.941(23.90)				

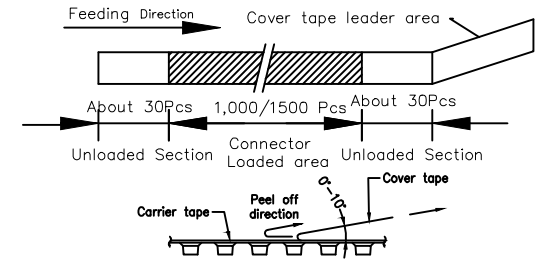
 THIRD ANGLE PROJECTION	GENERAL TOLERANCES (UNLESS SPECIFIED)		APPROVE BY	DATE	PART NO.	ITEM NO.	 Leader Of Industry
	X.±.012(0.30)	X.±5'	FRANK	8/JUL/13	FWF12510-SXXB14W5M-X	FWF12510	
DESIGN UNITS Inch (metric)	X.X±.008(0.20)	.X'±2'	CHECKED BY	DATE	TITLE		REV 1 SHEET NO. 2/3
SCALE	X.XX±.006(0.15)	.XX'±1'	JACOB	8/JUL/13	Wire to Board (Wafer) Pitch 1.25mm 90° Angle (SMT)		
SIZE	X.XXX±.004(0.10)	.XXX'±0.5'	DRAWN BY	DATE	THIS DRAWING CONTAINS INFORMATION THAT IS PROPRIETARY TO TXGA INDUSTRIAL ELECTRONICS(S.Z)CO.,LTD AND SHOULD NOT BE USED WITHOUT WRITTEN PERMISSION		
5:1	A4		CHERRY	8/JUL/13			

1 2 3 4 5 6 7 8

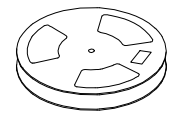
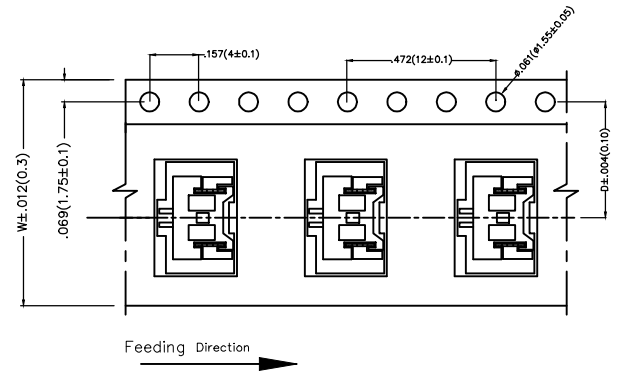
REV	LOCATIONS	DESCRIPTION	DATE	REVISER	APPD



- Note:
- 10 sprocket hole cumulative tolerance  $\pm 0.2$
  - Carrier camber is within 1.0mm in 100mm
  - Material: White Conductive polystyrene Alloy 100% recyclable
  - All dimensions meet EIA-481-3 requirements
  - Component load per 13" reel: 1,000/1,500pcs

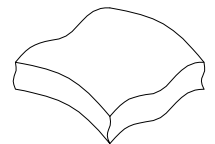


Circuits (n)	Dimensions(in/mm)		Circuits (n)	Dimensions(in/mm)	
	D	W		D	W
2	.295(7.50)	.630(16.00)	9	.559(14.20)	1.260(32.00)
3	.295(7.50)	.630(16.00)	10	.559(14.20)	1.260(32.00)
4	.453(11.50)	.945(24.00)	11	.559(14.20)	1.260(32.00)
5	.453(11.50)	.945(24.00)	14	.559(14.20)	1.260(32.00)
6	.453(11.50)	.945(24.00)			
7	.559(14.20)	1.260(32.00)			
8	.559(14.20)	1.260(32.00)			

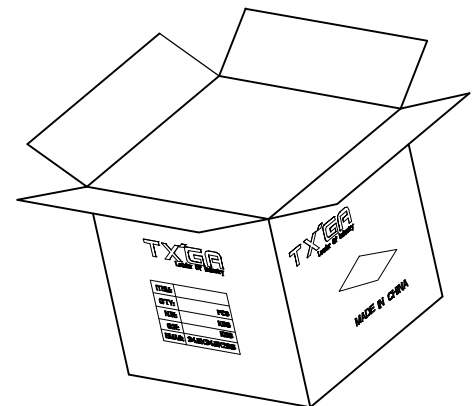


FWF12510-SXXB14W5M-A  
(1,000 pcs/Reel)  
FWF12510-SXXB14W5M-B  
(1,500 pcs/Reel)

PE Bag



Drying agent/pcs



 <b>THIRD ANGLE PROJECTION</b>	GENERAL TOLERANCES (UNLESS SPECIFIED)		APPROVE BY	DATE	PART NO.	ITEM NO.	 <b>TXGA</b> Leader Of Industry		
	X.±.012(0.30)	X.±5'	FRANK	8/JUL/13	FWF12510-SXXB14W5M-X	FWF12510			
	DESIGN UNITS Inch (metric)	X.X±.008(0.20)	.X'±2'	CHECKED BY	DATE	TITLE		REV 1	SHEET NO. 3/3
	SCALE	SIZE	X.XX±.006(0.15)	JACOB	8/JUL/13	Wire to Board (Wafer) Pitch 1.25mm 90° Angle (SMT)			
5:1	A4	X.XXX±.004(0.10)	DRAWN BY	DATE	THIS DRAWING CONTAINS INFORMATION THAT IS PROPRIETARY TO TXGA INDUSTRIAL ELECTRONICS(S.Z)CO.,LTD AND SHOULD NOT BE USED WITHOUT WRITTEN PERMISSION				
		.XXX'±0.5'	CHERRY	8/JUL/13					

## X-ON Electronics

Largest Supplier of Electrical and Electronic Components

*Click to view similar products for [Headers & Wire Housings](#) category:*

*Click to view products by [TXGA](#) manufacturer:*

Other Similar products are found below :

[0015917161](#) [0022155065](#) [57102-F02-18ULF](#) [58102-G61-06LF](#) [582553-1](#) [01.001.5753.1](#) [0050291907](#) [02.125.8002.8](#) [609-3404](#) [61062-3](#)  
[CSU011177004](#) [622-0430](#) [622-3653LF](#) [63453-116](#) [636-1030](#) [636-1427](#) [636-3427](#) [636-4007](#) [641938-9](#) [65495-038](#) [65692-001LF](#) [65781-018](#)  
[65781-047](#) [65817-010LF](#) [65817-015LF](#) [67095-007LF](#) [67601157](#) [68631-112](#) [68645-018](#) [699319-000](#) [70.362.1628.0](#) [70-4210](#) [70-4226B](#) [70-](#)  
[4853B](#) [71.350.2428.0](#) [733-134](#) [733-162](#) [760-3052](#) [MHR-64-VUAL](#) [80.063.4001.1](#) [800-90-001-10-001000](#) [801-43-002-10-013000](#)  
[801-43-006-10-002000](#) [803-43-024-10-001000](#) [803-93-012-10-001000](#) [8-1437020-4](#) [819-22-004-30-001101](#) [820-22-006-30-001101](#)  
[820-22-008-30-001101](#) [821-22-002-10-001101](#)