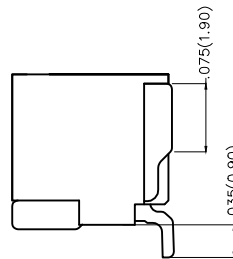
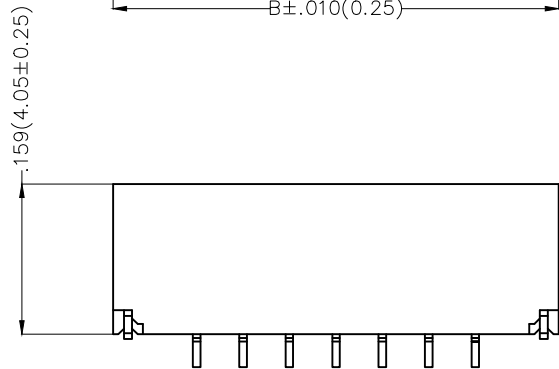
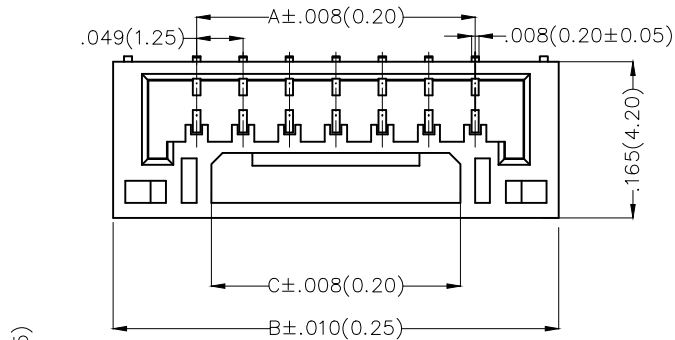


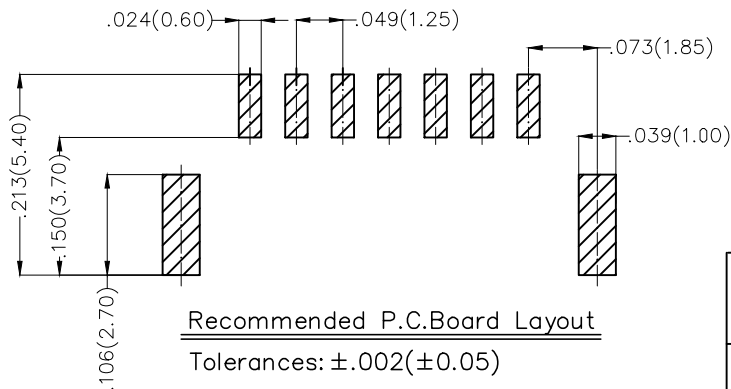
| REV | LOCATIONS | DESCRIPTION | DATE | REVISER | APPD |
|-----|-----------|-------------|------|---------|------|
| | | | | | |

Electrical

Current Rating: 1.0A AC(rms)/DC
Voltage Rating: 125V AC(rms)/DC
Contact Resistance: 20 m Ω Max
Insulation Resistance: 100 M Ω MIN
Withstanding Voltage: 250V AC r.m.s
Temperature Range-Operating: -25°C~+85°C
Material and Plating
Housing: PA9T(UL 94V-0)
Contact Pin: Brass/ Tin plated
Solder Tab: Copper alloy/ Tin plated



| Circuits (n) | Part No. | Dimensions(in/mm) | | |
|--------------|--------------------|-------------------|-------------|------------|
| | | A | B | C |
| 2 | FWF12514-S02B24W5M | .049(1.25) | .226(5.75) | .087(2.20) |
| 3 | FWF12514-S03B24W5M | .098(2.50) | .276(7.00) | .130(3.30) |
| 4 | FWF12514-S04B24W5M | .147(3.75) | .325(8.25) | .179(4.55) |
| 5 | FWF12514-S05B24W5M | .197(5.00) | .374(9.50) | .179(4.55) |
| 6 | FWF12514-S06B24W5M | .246(6.25) | .423(10.75) | .258(6.55) |
| 7 | FWF12514-S07B24W5M | .295(7.50) | .472(12.00) | .258(6.55) |
| 8 | FWF12514-S08B24W5M | .344(8.75) | .522(13.25) | .258(6.55) |
| 9 | FWF12514-S09B24W5M | .394(10.00) | .571(14.50) | .258(6.55) |
| 10 | FWF12514-S10B24W5M | .443(11.25) | .620(15.75) | .337(8.55) |
| 11 | FWF12514-S11B24W5M | .492(12.50) | .669(17.00) | .337(8.55) |
| 12 | FWF12514-S12B24W5M | .541(13.75) | .719(18.25) | .337(8.55) |



Ordering Information

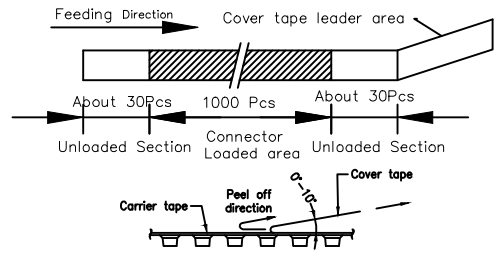
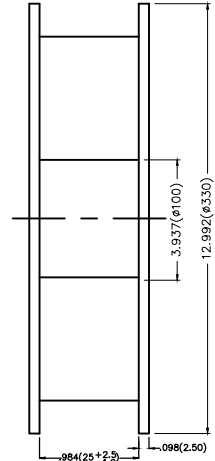
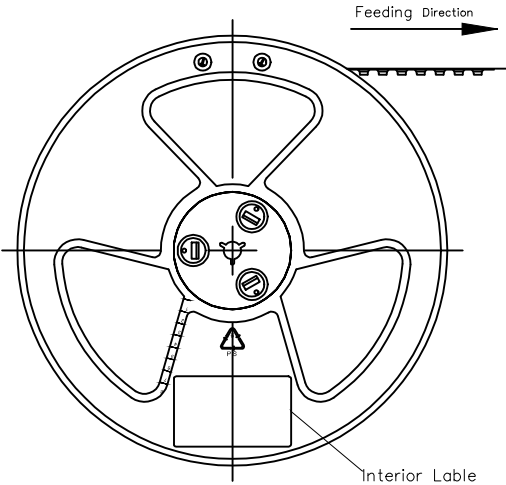
FWF 125 14 - S XX B 2 4 W5 M
1 2 3 4 5 6 7 8 9 10

| | | | | |
|------------------------------|-------------------------------------|----------------------------|------------------------------|------------------------|
| 1 Category FWF-Wafer | 2 Series Number 125-Pitch 1.25mm | 3 Distinction No. 14 | 4 Row Option S-Single Row | 5 Circuits XX |
| 6 Entry Angle B-90° Angle | 7 Plating 2-Tin Plated | 8 Material-Resin 4-PA9T | 9 Color-Resin W5-White | 10 Packaging M-Reel |

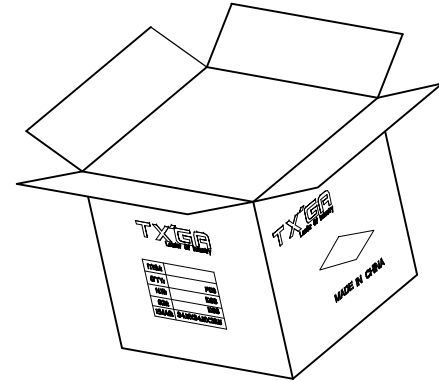
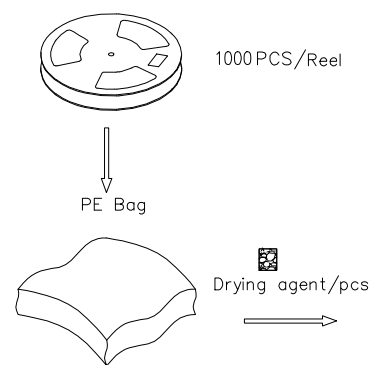
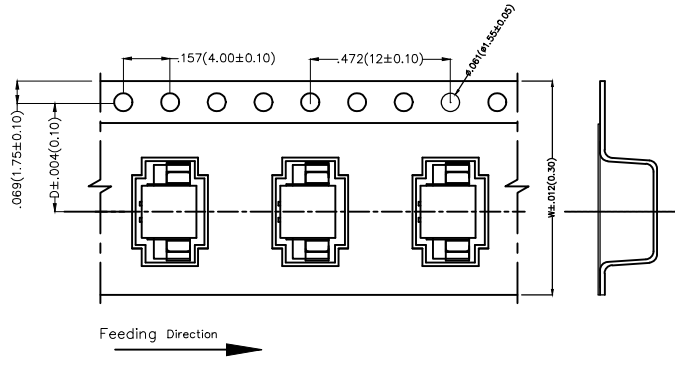
| | | | | | | | | |
|----------------------------|---------------------------------------|-------------------------------------|---------------------|---------------------|--|--|------------------------|-------|
| THIRD ANGLE PROJECTION | GENERAL TOLERANCES (UNLESS SPECIFIED) | | APPROVE BY FRANK | DATE 8/JUL/13 | PART NO. FWF12514-SXXB24W5M | ITEM NO. FWF12514 | Leader Of Industry | |
| | DESIGN UNITS Inch (metric) | X.XX±.012(0.30) X.XX±.008(0.20) | X'±5° X'±2° | CHECKED BY JACOB | DATE 8/JUL/13 | TITLE Wire to Board (Wafer) Pitch 1.25mm 90° Angle (SMT) | | REV 0 |
| SCALE 5:1 | SIZE A4 | X.XX±.006(0.15) X.XXX±.004(0.10) | DRAWN BY CHERRY | DATE 8/JUL/13 | THIS DRAWING CONTAINS INFORMATION THAT IS PROPRIETARY TO TXGA INDUSTRIAL ELECTRONICS(S.Z)CO.,LTD AND SHOULD NOT BE USED WITHOUT WRITTEN PERMISSION | | | |

| REV | LOCATIONS | DESCRIPTION | DATE | REVISER | APPD |
|-----|-----------|-------------|------|---------|------|
| | | | | | |

- Note:**
- 10 sprocket hole cumulative tolerance ± 0.2
 - Carrier camber is within 1.0mm in 100mm
 - Material: White Conductive polystyrene Alloy 100% recyclable
 - All dimensions meet EIA-481-3 requirements
 - Component load per 13" reel: 1000 pcs



| Circuits (n) | Dimensions(in/mm) | | Circuits (n) | Dimensions(in/mm) | |
|--------------|-------------------|--------------|--------------|-------------------|--------------|
| | D | W | | D | W |
| 2 | .295(7.50) | .630(16.00) | 10 | .559(14.20) | 1.260(32.00) |
| 3 | .295(7.50) | .630(16.00) | 11 | .559(14.20) | 1.260(32.00) |
| 4 | .453(11.50) | .945(24.00) | 12 | .559(14.20) | 1.260(32.00) |
| 5 | .453(11.50) | .945(24.00) | | | |
| 6 | .453(11.50) | .945(24.00) | | | |
| 7 | .559(14.20) | 1.260(32.00) | | | |
| 8 | .559(14.20) | 1.260(32.00) | | | |
| 9 | .559(14.20) | 1.260(32.00) | | | |



| | | | | | | | |
|-------------------------------|---------------------------------------|------------|------------|----------|--|----------|------------------------|
| THIRD ANGLE PROJECTION | GENERAL TOLERANCES (UNLESS SPECIFIED) | | APPROVE BY | DATE | PART NO. | ITEM NO. | Leader Of Industry |
| | X.±.012(0.30) | X.±5' | FRANK | 8/JUL/13 | FWF12514-SXXB24W5M | FWF12514 | |
| DESIGN UNITS Inch (metric) | X.XX±.008(0.20) | .X'±2' | CHECKED BY | DATE | TITLE | | REV 0 |
| SCALE | X.XX±.006(0.15) | .XX'±1' | JACOB | 8/JUL/13 | Wire to Board (Wafer) Pitch 1.25mm 90° Angle (SMT) | | |
| SIZE | X.XXX±.004(0.10) | .XXX'±0.5' | DRAWN BY | DATE | THIS DRAWING CONTAINS INFORMATION THAT IS PROPRIETARY TO TXGA INDUSTRIAL ELECTRONICS(S.Z)CO.,LTD AND SHOULD NOT BE USED WITHOUT WRITTEN PERMISSION | | |
| 5:1 | | | CHERRY | 8/JUL/13 | | | |

X-ON Electronics

Largest Supplier of Electrical and Electronic Components

Click to view similar products for [Headers & Wire Housings](#) category:

Click to view products by [TXGA](#) manufacturer:

Other Similar products are found below :

[0015917161](#) [0022155065](#) [57102-F02-18ULF](#) [58102-G61-06LF](#) [582553-1](#) [01.001.5753.1](#) [0050291907](#) [02.125.8002.8](#) [609-3404](#) [61062-3](#)
[CSU011177004](#) [622-0430](#) [622-3653LF](#) [63453-116](#) [636-1030](#) [636-1427](#) [636-3427](#) [636-4007](#) [641938-9](#) [65495-038](#) [65692-001LF](#) [65781-018](#)
[65781-047](#) [65817-010LF](#) [65817-015LF](#) [67095-007LF](#) [67601157](#) [68631-112](#) [68645-018](#) [699319-000](#) [70.362.1628.0](#) [70-4210](#) [70-4226B](#) [70-](#)
[4853B](#) [71.350.2428.0](#) [733-134](#) [733-162](#) [760-3052](#) [MHR-64-VUAL](#) [80.063.4001.1](#) [800-90-001-10-001000](#) [801-43-002-10-013000](#)
[801-43-006-10-002000](#) [803-43-024-10-001000](#) [803-93-012-10-001000](#) [8-1437020-4](#) [819-22-004-30-001101](#) [820-22-006-30-001101](#)
[820-22-008-30-001101](#) [821-22-002-10-001101](#)