

1 2 3 4 5 6 7 8

REV	LOCATIONS	DESCRIPTION	DATE	REVISER	APPD
1	△	Size changes	29/APR/21	KATE	JOHNNY

A

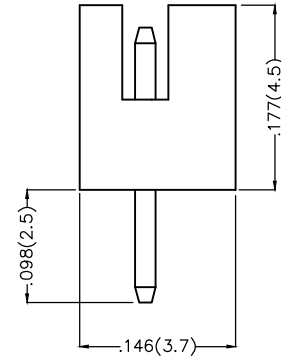
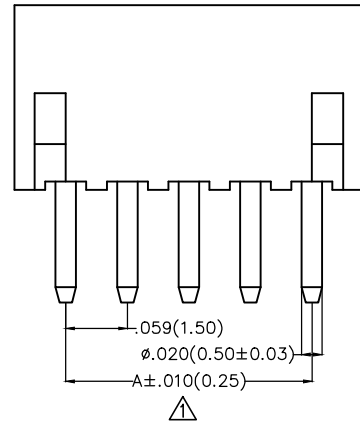
B

C

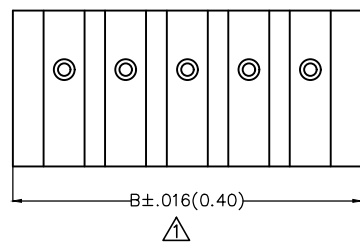
D

E

F



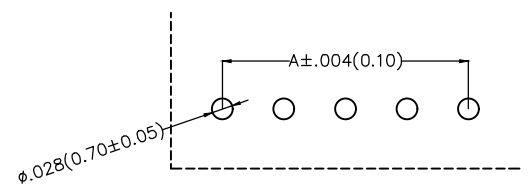
Electrical  
 Current Rating: 1.0A AC(rms)/DC  
 Voltage Rating: 50V AC(rms)/DC  
 Contact Resistance: 20 m Ω Max  
 Insulation Resistance: 500 M Ω MIN  
 Withstanding Voltage: 500V AC r.m.s  
 Temperature Range—Operating: -25°C ~ +85°C  
 Material and Plating  
 Housing: PA46( UL 94V-0)  
 Contact Pin: Brass  
 Plating: Tin Plated



Ordering Information

FWF 150 01 — S XX S 2 6 W5 B  
 1 2 3 4 5 6 7 8 9 10

1	Category FWF—Wafer	2	Series Number 150—Pitch1.5mm	3	Distinction No. 01	4	Row Option S—Single Row	5	Circuits XX	6	Entry Angle S—180° Vertical
7	Plating 2—Tin Plated	8	Material—Resin 6—PA46	9	Color—Resin W5—White	10	Packaging B—PE Bag				



Recommended P.C.Board Layout

 THIRD ANGLE PROJECTION	GENERAL TOLERANCES (UNLESS SPECIFIED)		APPROVE BY FRANK	DATE 8/JUL/13	PART NO. FWF15001—SXXS26W5B	ITEM NO. FWF15001	 Leader Of Industry
	DESIGN UNITS Inch (metric)	X.±.012(0.30)	X.±5°	CHECKED BY JACOB	DATE 8/JUL/13	TITLE Wire to Board (Wafer) Pitch 1.5mm 180° Vertical (DIP)	
SCALE 5:1	SIZE A4	X.XX±.006(0.15)	.XX±1°	DRAWN BY CHERRY	DATE 8/JUL/13	THIS DRAWING CONTAINS INFORMATION THAT IS PROPRIETARY TO TXGA INDUSTRIAL ELECTRONICS(S.Z)CO.,LTD AND SHOULD NOT BE USED WITHOUT WRITTEN PERMISSION	
						REV 1	SHEET NO. 1/2

1 2 3 4 5 6 7 8

1 2 3 4 5 6 7 8

REV	LOCATIONS	DESCRIPTION	DATE	REVISER	APPD

A

A

B

B

C

C

D

D



E

E

F

F

Circuits (n)	Part No.	Dimensions(in/mm)	
		A	B
2	FWF15001-S02S26W5B	.059(1.50)	.177(4.50)
3	FWF15001-S03S26W5B	.118(3.00)	.236(6.00)
4	FWF15001-S04S26W5B	.177(4.50)	.295(7.50)
5	FWF15001-S05S26W5B	.236(6.00)	.354(9.00)
6	FWF15001-S06S26W5B	.295(7.50)	.413(10.50)
7	FWF15001-S07S26W5B	.354(9.00)	.472(12.00)
8	FWF15001-S08S26W5B	.413(10.50)	.531(13.50)
9	FWF15001-S09S26W5B	.472(12.00)	.591(15.00)
10	FWF15001-S10S26W5B	.531(13.50)	.650(16.50)
11	FWF15001-S11S26W5B	.591(15.00)	.709(18.00)
12	FWF15001-S12S26W5B	.650(16.50)	.768(19.50)
13	FWF15001-S13S26W5B	.709(18.00)	.827(21.00)
14	FWF15001-S14S26W5B	.768(19.50)	.886(22.50)

 THIRD ANGLE PROJECTION	GENERAL TOLERANCES (UNLESS SPECIFIED)		APPROVE BY FRANK	DATE 8/JUL/13	PART NO. FWF15001-SXXS26W5B	ITEM NO. FWF15001	 Leader Of Industry	
	DESIGN UNITS Inch (metric)	X.±.012(0.30)	X.±5°	CHECKED BY JACOB	DATE 8/JUL/13	TITLE Wire to Board (Wafer) Pitch 1.5mm 180° Vertical (DIP)		REV 1
	SCALE 5:1	SIZE A4	X.XX±.006(0.15)	X.XX±1°	DRAWN BY CHERRY	DATE 8/JUL/13	THIS DRAWING CONTAINS INFORMATION THAT IS PROPRIETARY TO TXGA INDUSTRIAL ELECTRONICS(S.Z)CO.,LTD AND SHOULD NOT BE USED WITHOUT WRITTEN PERMISSION	

1 2 3 4 5 6 7 8

## X-ON Electronics

Largest Supplier of Electrical and Electronic Components

*Click to view similar products for [Headers & Wire Housings](#) category:*

*Click to view products by [TXGA](#) manufacturer:*

Other Similar products are found below :

[57102-F02-18ULF](#) [58102-G61-06LF](#) [0009485154](#) [009176003701906](#) [0050291907](#) [02.125.8002.8](#) [609-3404](#) [61062-3](#) [622-0430](#) [622-3653LF](#)  
[63453-116](#) [636-1030](#) [636-1427](#) [636-3427](#) [636-4007](#) [641938-9](#) [644827-2](#) [65495-038](#) [65692-001LF](#) [65781-018](#) [65781-047](#) [65817-010LF](#)  
[65817-015LF](#) [66207-023LF](#) [67016-026LF](#) [67095-007LF](#) [68631-112](#) [68645-018](#) [68648-049](#) [699319-000](#) [70.362.1628.0](#) [70-4210](#) [70-4226B](#)  
[70-4853B](#) [707-5020](#) [707-5028](#) [71.350.2428.0](#) [71961-016LF](#) [733-134](#) [754199-000](#) [760-3052](#) [787-8014-00](#) [FCN-367T-T012/H](#) [80.063.4001.1](#)  
[800-90-001-10-001000](#) [800-90-010-10-002000](#) [801-43-002-10-013000](#) [801-43-006-10-002000](#) [803-41-018-10-001000](#) [803-43-014-20-](#)  
[001000](#)