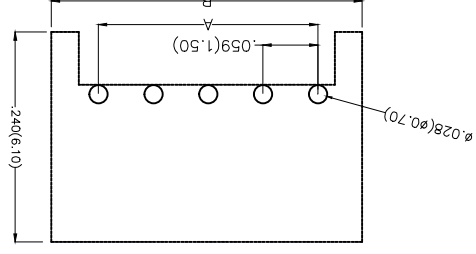
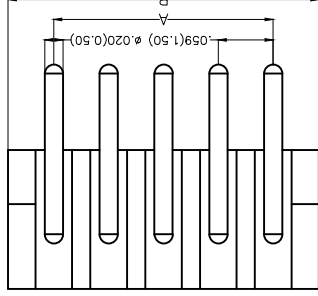
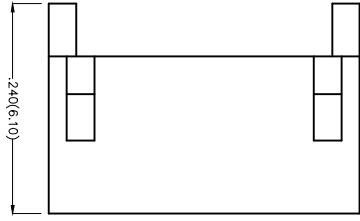
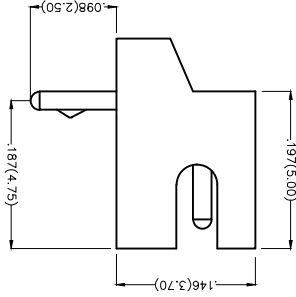


REV	LOCATIONS	DESCRIPTION	DATE	REVISER	APPD

Electrical
 Current Rating: 1.0A AC(rms)/DC
 Voltage Rating: 50V AC(rms)/DC
 Contact Resistance: 20 mΩ Max
 Insulation Resistance: 500 MΩ MIN
 Withstanding Voltage: 500V AC r.m.s
 Temperature Range—Operating: -25°C~+85°C
 Material and Plating
 Housing: P446(UL 94V-0)
 Contact Pin: Brass
 Plating: Tin Plated



Recommended P.C.Board Layout

THIRD ANGLE PROJECTION	DESIGN UNITS Inch (metric)	SCALE 5:1 A4
------------------------	----------------------------	--------------

GENERAL TOLERANCES (UNLESS SPECIFIED)	X.±.012(0.30)	X.±.008(0.20)	X.±.006(0.15)	X.±.004(0.10)	X.XX±.05
---------------------------------------	---------------	---------------	---------------	---------------	----------

APPROVE BY	FRANK	CHECKED BY	JACOB	DRAWN BY	CHERRY
------------	-------	------------	-------	----------	--------

DATE	8/JUL/13	DATE	8/JUL/13	DATE	8/JUL/13
------	----------	------	----------	------	----------

PART NO.	FWF15003-SXXB26WSB	ITEM NO.	FWF15003
TITLE	Wire to Board (Water Pitch 1.5mm 90° DIP)		

REVISION	REV 0	SHEET NO.	1/2
----------	-------	-----------	-----




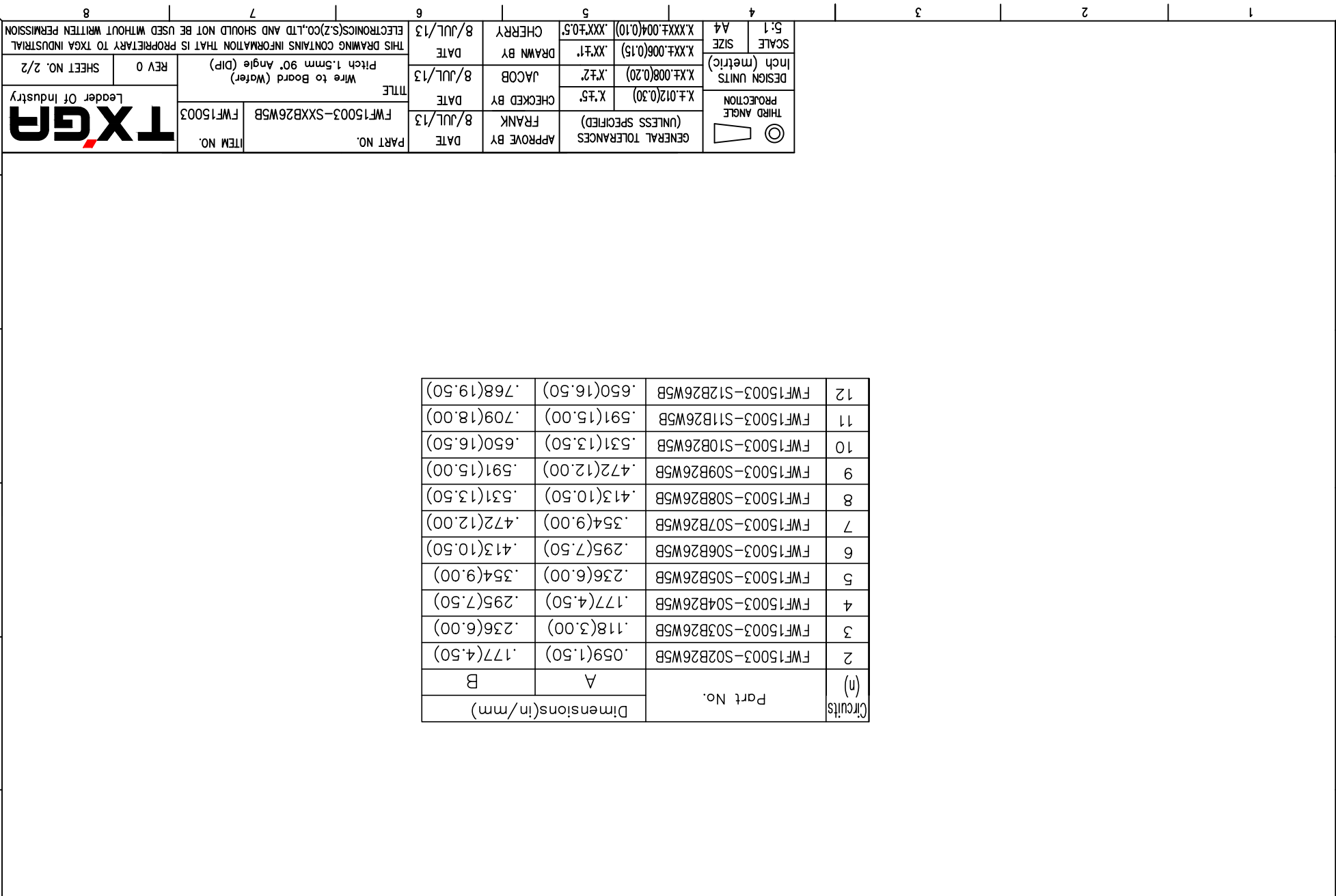
Ordering Information

1	FWF 150	03	-	S	XX	B	2	6	W5	B	
2	Series Number	150-Pitch1.5mm	3	Distinction No.	03	4	Row Option	S-Single Row	5	Circuits	XX
3	Category	FWF-Water	4	Entry Angle	B-90°	6	Packaging	B-PF Bag	9	Color-Resin	WS-White
4	Material-Resin	6-P446	8	Plating	2-Tin Plated	7	Material-Resin	WS-White	10	Color-Resin	WS-White

REV	LOCATIONS	DESCRIPTION	DATE	REVISER	APPD

Circuits (n)	Part No.	Dimensions(in/mm)	
		A	B
2	FWF15003-S02B26W5B	.059(1.50)	.177(4.50)
3	FWF15003-S03B26W5B	.118(3.00)	.236(6.00)
4	FWF15003-S04B26W5B	.177(4.50)	.295(7.50)
5	FWF15003-S05B26W5B	.236(6.00)	.354(9.00)
6	FWF15003-S06B26W5B	.295(7.50)	.413(10.50)
7	FWF15003-S07B26W5B	.354(9.00)	.472(12.00)
8	FWF15003-S08B26W5B	.413(10.50)	.531(13.50)
9	FWF15003-S09B26W5B	.472(12.00)	.591(15.00)
10	FWF15003-S10B26W5B	.531(13.50)	.650(16.50)
11	FWF15003-S11B26W5B	.591(15.00)	.709(18.00)
12	FWF15003-S12B26W5B	.650(16.50)	.768(19.50)

 THIRD ANGLE PROJECTION	X.±.012(0.30)	X.±.5	CHECKED BY FRANK	DATE 8/JUL/13	PART NO. FWF15003-SXXB26W5B ITEM NO. FWF15003	TITLE Wire to Board (Water) Pitch 1.5mm 90° Angle (DIP)	REV 0	SHEET NO. 2/2
	X.±.008(0.20)	X.±.2	JACOB	DATE 8/JUL/13	DRAWN BY JACOB		DATE 8/JUL/13	THIS DRAWING CONTAINS INFORMATION THAT IS PROPRIETARY TO TXGA INDUSTRIAL ELECTRONICS(SZ)CO.,LTD AND SHOULD NOT BE USED WITHOUT WRITTEN PERMISSION
DESIGN UNITS Inch (metric)	X.±.006(0.15)	X.±.1	DRAWN BY CHERRY	DATE 8/JUL/13	SCALE 5:1 A4	GENERAL TOLERANCES (UNLESS SPECIFIED)	X.±.004(0.10)	X.±.05



X-ON Electronics

Largest Supplier of Electrical and Electronic Components

Click to view similar products for [Headers & Wire Housings](#) category:

Click to view products by [TXGA](#) manufacturer:

Other Similar products are found below :

[95000-104TRLF](#) [10135584-644402LF](#) [DF62W-EP2022PCA](#) [95000-106TRLF](#) [DF62W-2022SCA](#) [DF62W-EP2022PC](#) [2203348](#) [DF62W-2022SC](#) [1084018](#) [1029039](#) [1084017](#) [802-10-012-10-002000](#) [1112640](#) [1112639](#) [891-007-9SS-BST1T](#) [000-34000](#) [0008550134](#) [0009482033](#) [0009507031](#) [57102-F02-18ULF](#) [57102-S06-03LF](#) [57202-S52-04LF](#) [PCN6-15S-2.5E](#) [0039019024](#) [58102-G61-06LF](#) [582553-1](#) [0009485154](#) [0009508121](#) [0022285053](#) [0050291907](#) [018731A](#) [LY20-4P-DT1-P1E-BR](#) [02.125.8002.8](#) [60101931](#) [60598-1 \(Cut Strip\)](#) [M1625-3R/100](#) [61062-3](#) [61082-181009](#) [CSU011177004](#) [636-1427](#) [638009-1](#) [641938-9](#) [641991-4](#) [644168-1](#) [644827-2](#) [647662-1](#) [65039-019ELF](#) [65692-001LF](#) [65781-018](#) [65781-047](#)