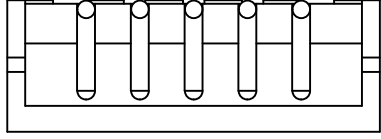
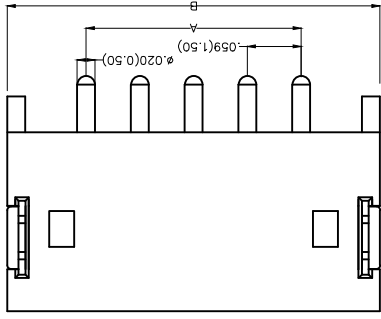
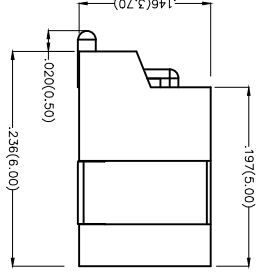
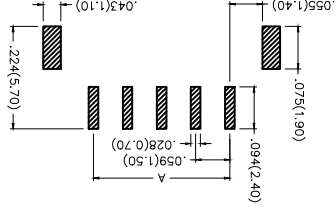


REV	LOCATIONS	DESCRIPTION	DATE	REVISER	APPD

Electrical
 Current Rating: 1.0A AC(rms)/DC
 Voltage Rating: 50V AC(rms)/DC
 Contact Resistance: 20 mΩ Max
 Insulation Resistance: 500 MΩ Min
 Withstanding Voltage: 500V AC r.m.s
 Temperature Range-Operating: -25°C~+85°C
 Material and Plating
 Housing: PA9T (UL 94V-0)
 Contact Pin: Brass
 Plating: Tin Plated



Recommended P.C.Board Layout



1	Category	FWF-Water
2	Series Number	150-Pitch1.50mm
3	Distinction No.	04
4	Row Option	S-Single Row
5	Circuits	XX
6	Entry Angle	B-90° Angle
7	Plating	2-Tin Plated
8	Material-Resin	4-PA9T
9	Color-Resin	WS-White
10	Packaging	M-Reel

Ordering Information


FWF 150 04 - S XX B 2 4 WS M

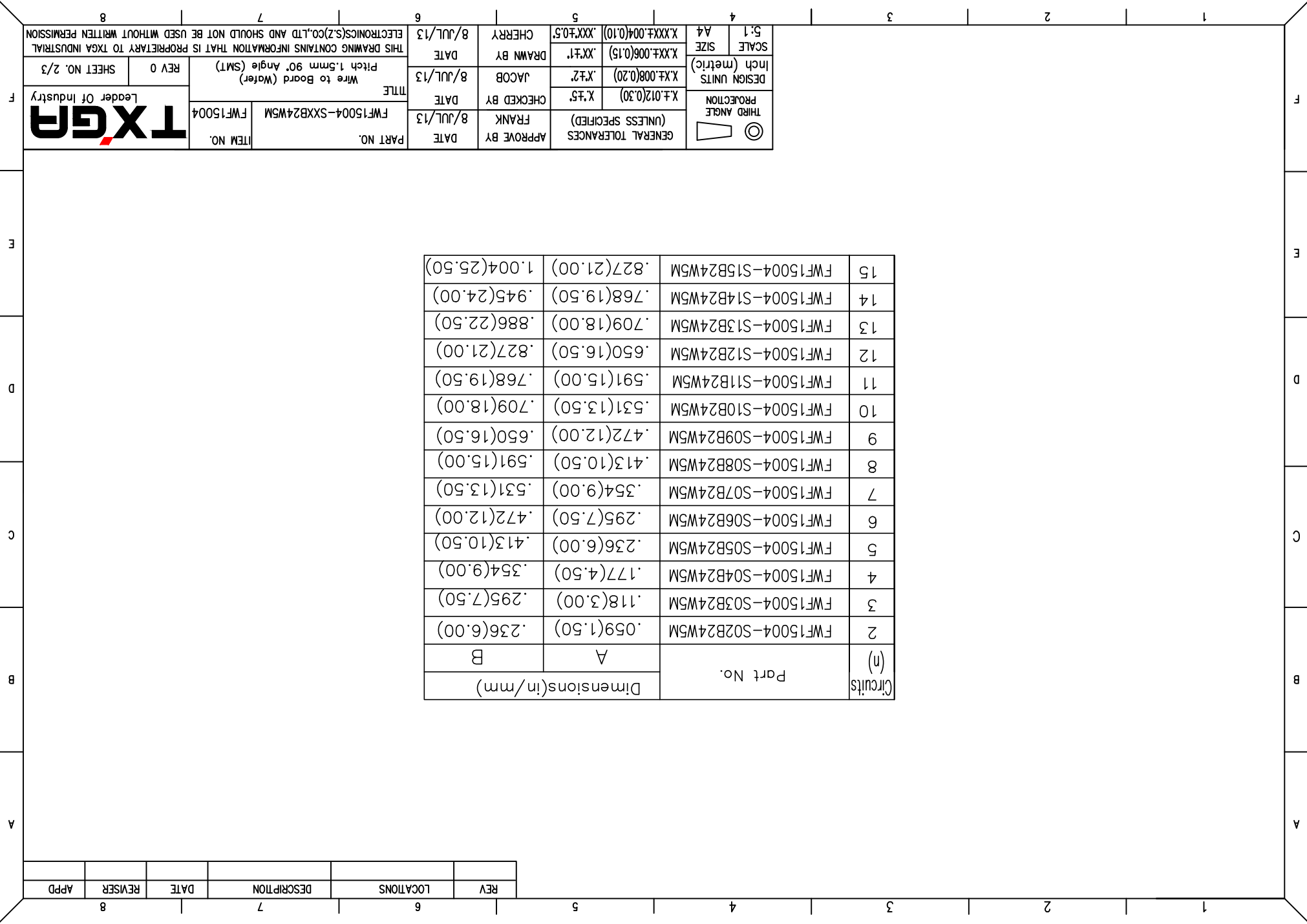
GENERAL TOLERANCES (UNLESS SPECIFIED)	APPROVE BY	DATE	PART NO.	ITEM NO.
X.±.012(0.30)	FRANK	8/JUL/13	FWF15004-SXXB24WSM	FWF15004
X.±.008(0.20)	CHECKED BY	DATE	TITLE	
X.±.006(0.15)	JACOB	8/JUL/13	Wire to Board (Water Pitch 1.5mm 90° Angle (SMT))	
X.±.05	DRAWN BY	DATE	REV 0	SHEET NO. 1/3
X.XXX±.004(0.10)	CHERRY	8/JUL/13	THIS DRAWING CONTAINS INFORMATION THAT IS PROPRIETARY TO TXGA INDUSTRIAL ELECTRONICS(SZ)CO.,LTD AND SHOULD NOT BE USED WITHOUT WRITTEN PERMISSION	
A4	SCALE	5:1		



REV	LOCATIONS	DESCRIPTION	DATE	REVISER	APPD

Circuits (n)	Part No.	Dimensions(in/mm)	
		A	B
2	FWF15004-S02B24W5M	.059(1.50)	.236(6.00)
3	FWF15004-S03B24W5M	.118(3.00)	.295(7.50)
4	FWF15004-S04B24W5M	.177(4.50)	.354(9.00)
5	FWF15004-S05B24W5M	.236(6.00)	.413(10.50)
6	FWF15004-S06B24W5M	.295(7.50)	.472(12.00)
7	FWF15004-S07B24W5M	.354(9.00)	.531(13.50)
8	FWF15004-S08B24W5M	.413(10.50)	.591(15.00)
9	FWF15004-S09B24W5M	.472(12.00)	.650(16.50)
10	FWF15004-S10B24W5M	.531(13.50)	.709(18.00)
11	FWF15004-S11B24W5M	.591(15.00)	.768(19.50)
12	FWF15004-S12B24W5M	.650(16.50)	.827(21.00)
13	FWF15004-S13B24W5M	.709(18.00)	.886(22.50)
14	FWF15004-S14B24W5M	.768(19.50)	.945(24.00)
15	FWF15004-S15B24W5M	.827(21.00)	1.004(25.50)

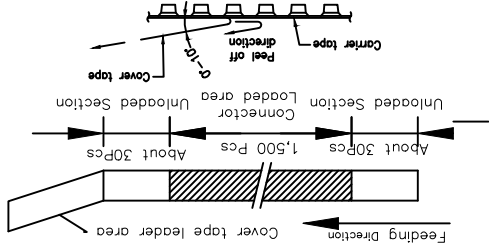
 THIRD ANGLE PROJECTION		GENERAL TOLERANCES (UNLESS SPECIFIED) APPROVE BY FRANK DATE 8/JUL/13 CHECKED BY JACOB DATE 8/JUL/13 DRAWN BY CHERRY DATE 8/JUL/13	TITLE Wire to Board (Water) Pitch 1.5mm 90° Angle (SMT) REV 0 SHEET NO. 2/3	PART NO. FWF15004-SXXB24W5M ITEM NO. FWF15004	THIS DRAWING CONTAINS INFORMATION THAT IS PROPRIETARY TO TXGA INDUSTRIAL ELECTRONICS(SZ)CO.,LTD AND SHOULD NOT BE USED WITHOUT WRITTEN PERMISSION
SCALE 5:1	SIZE A4	X.XX±.004(0.10) X.XX±.006(0.15) X.XX±.1	X.XX±.008(0.20) X.XX±.1	X.XX±.012(0.30) X.XX±.1	DESIGN UNITS Inch (metric) PROJECTION



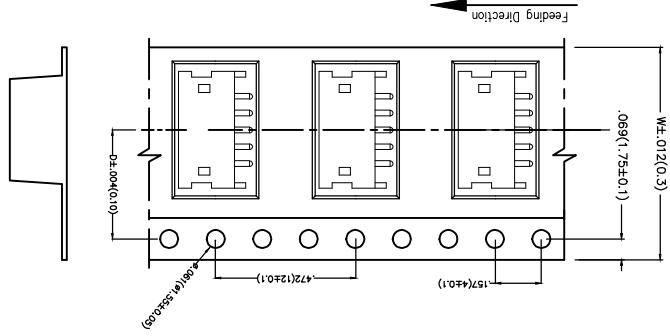
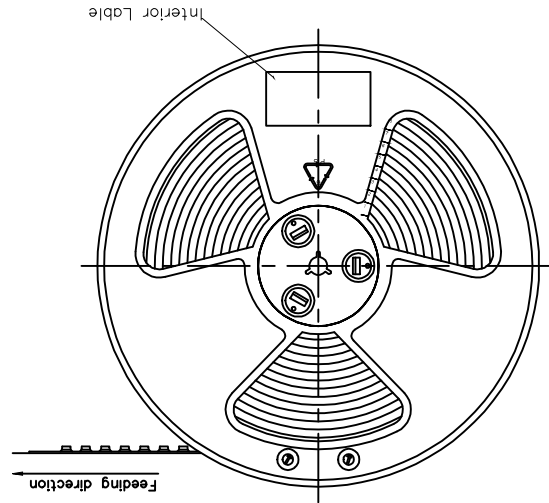
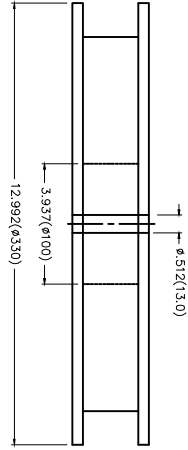
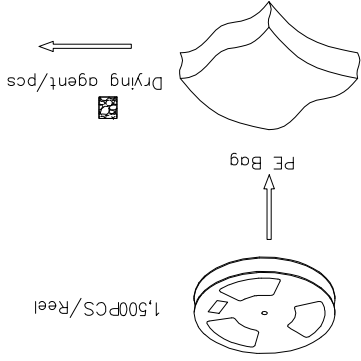
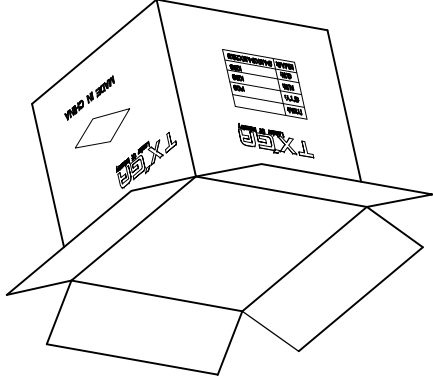
REV	LOCATIONS	DESCRIPTION	DATE	REVISER	APPD

Note:

1. 10 sprocket hole cumulative tolerance±.2
2. Carrier camber is within 1.0mm in 100mm
3. Material: White Conductive polystyrene Alloy 100% recyclable
4. All dimensions meet EIA-481-3 requirements
5. Component load per 13" reel: 1,500pcs



Circuits	Dimensions(in/mm)	W	D	(h)
2	.295(7.50)	.630(16.00)	.559(14.20)	1.260(32.00)
3	.295(7.50)	.630(16.00)	.559(14.20)	1.260(32.00)
4	.453(11.50)	.945(24.00)	.559(14.20)	1.260(32.00)
5	.453(11.50)	.945(24.00)	.559(14.20)	1.260(32.00)
6	.453(11.50)	.945(24.00)	.795(20.20)	1.732(44.00)
7	.559(14.20)	1.260(32.00)	.795(20.20)	1.732(44.00)
8	.559(14.20)	1.260(32.00)	.795(20.20)	1.732(44.00)



GENERAL TOLERANCES (UNLESS SPECIFIED)	APPROVE BY	DATE	PART NO.	ITEM NO.
X.±.012(0.30)	FRANK	8/JUL/13	FWF15004-SXXB24W5M	FWF15004
X.XX±.008(0.20)	CHECKED BY	DATE	TITLE	Leader Of Industry
X.XX±.006(0.15)	JACOB	8/JUL/13	Wire to Board (Water Pitch 1.5mm 90° Angle (SMT))	REV 0 SHEET NO. 3/3
X.XX±.004(0.10)	DRAWN BY	DATE	THIS DRAWING CONTAINS INFORMATION THAT IS PROPRIETARY TO TXGA INDUSTRIAL ELECTRONICS(S2)CO.,LTD AND SHOULD NOT BE USED WITHOUT WRITTEN PERMISSION	
X.XX±.05	CHERRY	8/JUL/13		
SCALE	SIZE			
5:1	A4			
THIRD ANGLE				
DESIGN UNITS	Inch (metric)			
X.XX±.008(0.20)	X.XX±.1			
X.XX±.006(0.15)	X.XX±.1			

TXGA
Leader Of Industry

X-ON Electronics

Largest Supplier of Electrical and Electronic Components

Click to view similar products for [Headers & Wire Housings](#) category:

Click to view products by [TXGA](#) manufacturer:

Other Similar products are found below :

[95000-104TRLF](#) [10135584-644402LF](#) [DF62W-EP2022PCA](#) [95000-106TRLF](#) [DF62W-2022SCA](#) [DF62W-EP2022PC](#) [2203348](#) [DF62W-2022SC](#) [1084018](#) [1029039](#) [1084017](#) [802-10-012-10-002000](#) [1112640](#) [1112639](#) [891-007-9SS-BST1T](#) [000-34000](#) [0008550134](#) [0009482033](#) [0009507031](#) [57102-F02-18ULF](#) [57102-S06-03LF](#) [57202-S52-04LF](#) [PCN6-15S-2.5E](#) [0039019024](#) [58102-G61-06LF](#) [582553-1](#) [0009485154](#) [0009508121](#) [0022285053](#) [0050291907](#) [018731A](#) [LY20-4P-DT1-P1E-BR](#) [02.125.8002.8](#) [60101931](#) [60598-1 \(Cut Strip\)](#) [M1625-3R/100](#) [61062-3](#) [61082-181009](#) [CSU011177004](#) [636-1427](#) [638009-1](#) [641938-9](#) [641991-4](#) [644168-1](#) [644827-2](#) [647662-1](#) [65039-019ELF](#) [65692-001LF](#) [65781-018](#) [65781-047](#)