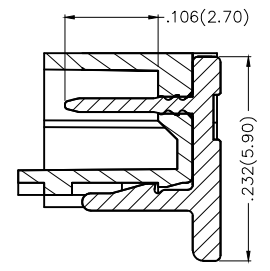
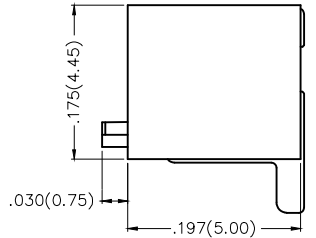
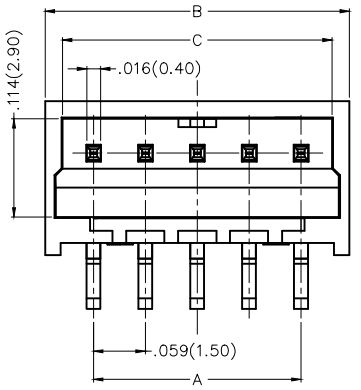
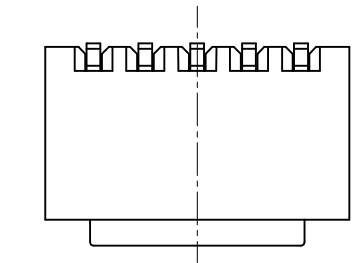
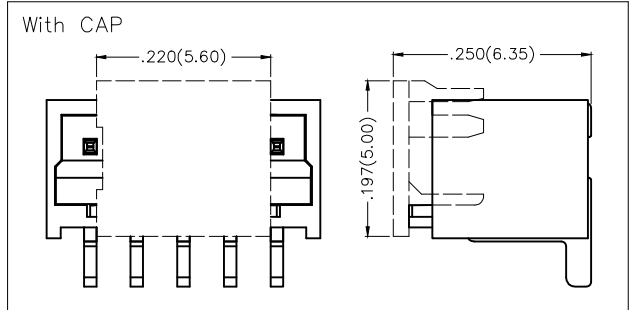


REV	LOCATIONS	DESCRIPTION	DATE	REVISER	APPD

**SPECIFICATIONS**

**Electrical**  
 Current Rating: 3A AC(rms)/DC  
 Voltage Rating: 350V AC(rms)/DC  
 Contact Resistance: 20 mΩ Max  
 Insulation Resistance: 1000 MΩ Min  
 Withstanding Voltage: 500V AC r.m.s  
 Temperature Range—Operating: -25°C~+85°C

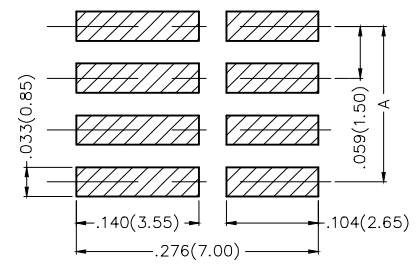
**Material and Plating**  
 Housing: PA6T (UL 94V-0)  
 Pin: Brass/ Tin Plated



**Ordering Information**

FWF 150 09 — S XX S 2 4 W5 M  
 1 2 3 4 5 6 7 8 9 10

1	Category	2	Series Number	3	Distinction No.	4	Row Option	5	Circuits
	FWF—Wafer		150—Pitch1.50mm		09		S—Single Row		XX
6	Entry Angle	7	Plating	8	Material—Resin	9	Color—Resin	10	Packaging
	S—180° Vertical		2—Tin Plated		4—PA6T		W5—Natural		M—Reel



Recommended P.C.Board Layout  
 General Tolerances: ±0.05mm

Circuits (n)	Part No.	Dimensions(in/mm)			Circuits (n)	Part No.	Dimensions(in/mm)		
		A	B	C			A	B	C
2	FWF15009-S02S24W5M	.059(1.50)	.169(4.30)	.132(3.35)	9	FWF15009-S09S24W5M	.472(12.00)	.583(14.80)	.545(13.85)
3	FWF15009-S03S24W5M	.118(3.00)	.228(5.80)	.191(4.85)	10	FWF15009-S10S24W5M	.531(13.50)	.642(16.30)	.604(15.35)
4	FWF15009-S04S24W5M	.177(4.50)	.287(7.30)	.250(6.35)	11	FWF15009-S11S24W5M	.591(15.00)	.701(17.80)	.663(16.85)
5	FWF15009-S05S24W5M	.236(6.00)	.346(8.80)	.309(7.85)	12	FWF15009-S12S24W5M	.650(16.50)	.760(19.30)	.722(18.35)
6	FWF15009-S06S24W5M	.295(7.50)	.406(10.30)	.368(9.35)	13	FWF15009-S13S24W5M	.709(18.00)	.819(20.80)	.781(19.85)
7	FWF15009-S07S24W5M	.354(9.00)	.465(11.80)	.427(10.85)	14	FWF15009-S14S24W5M	.768(19.50)	.878(22.30)	.841(21.35)
8	FWF15009-S08S24W5M	.413(10.50)	.524(13.30)	.486(12.35)	15	FWF15009-S15S24W5M	.827(21.00)	.937(23.80)	.900(22.85)

 THIRD ANGLE PROJECTION	GENERAL TOLERANCES (UNLESS SPECIFIED)		APPROVE BY	DATE	PART NO.	ITEM NO.	 Leader Of Industry	
	X.±.012(0.30)	X.±5'	FRANK	09/MAR/17				FWF15009-SXXS24W5M
DESIGN UNITS Inch (metric)	X.X±.008(0.20)	X.±2'	CHECKED BY	DATE	TITLE		REV 0	SHEET NO. 1/1
	X.XX±.006(0.15)	.XX±1"	CHERRY	09/MAR/17	Wire to Board (Wafer) Pitch 1.5mm 180° Vertical (SMT)			
SCALE	SIZE	X.XXX±.004(0.10)	DRAWN BY	DATE	THIS DRAWING CONTAINS INFORMATION THAT IS PROPRIETARY TO TXGA INDUSTRIAL ELECTRONICS(S.Z)CO.,LTD AND SHOULD NOT BE USED WITHOUT WRITTEN PERMISSION			
5:1	A4	.XX'±0.5'	KATE	09/MAR/17				

## X-ON Electronics

Largest Supplier of Electrical and Electronic Components

*Click to view similar products for [Headers & Wire Housings](#) category:*

*Click to view products by [TXGA](#) manufacturer:*

Other Similar products are found below :

[0015917161](#) [0022155065](#) [57102-F02-18ULF](#) [58102-G61-06LF](#) [582553-1](#) [01.001.5753.1](#) [0050291907](#) [02.125.8002.8](#) [609-3404](#) [61062-3](#)  
[CSU011177004](#) [622-0430](#) [622-3653LF](#) [63453-116](#) [636-1030](#) [636-1427](#) [636-3427](#) [636-4007](#) [641938-9](#) [65495-038](#) [65692-001LF](#) [65781-018](#)  
[65781-047](#) [65817-010LF](#) [65817-015LF](#) [67095-007LF](#) [67601157](#) [68631-112](#) [68645-018](#) [699319-000](#) [70.362.1628.0](#) [70-4210](#) [70-4226B](#) [70-](#)  
[4853B](#) [71.350.2428.0](#) [733-134](#) [733-162](#) [760-3052](#) [MHR-64-VUAL](#) [80.063.4001.1](#) [800-90-001-10-001000](#) [801-43-002-10-013000](#)  
[801-43-006-10-002000](#) [803-43-024-10-001000](#) [803-93-012-10-001000](#) [8-1437020-4](#) [819-22-004-30-001101](#) [820-22-006-30-001101](#)  
[820-22-008-30-001101](#) [821-22-002-10-001101](#)