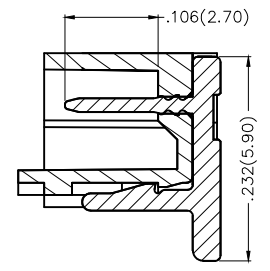
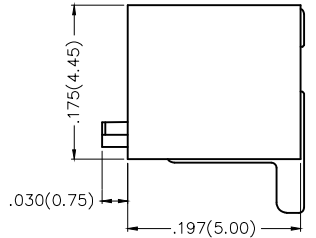
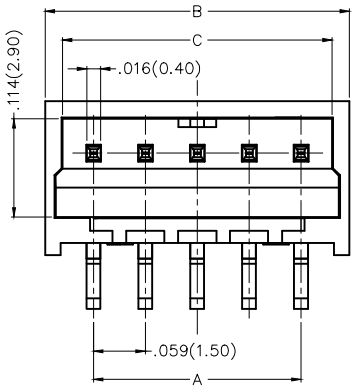
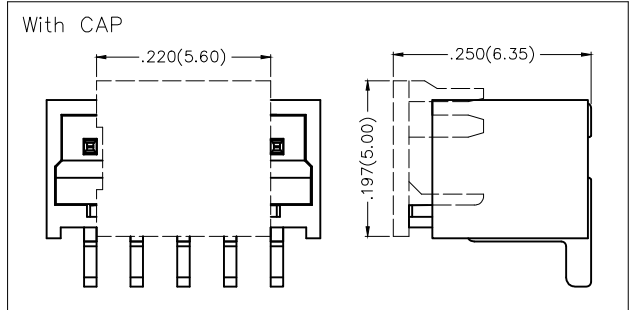


| REV | LOCATIONS | DESCRIPTION | DATE | REVISER | APPD |
|-----|-----------|-------------|------|---------|------|
| | | | | | |

SPECIFICATIONS

Electrical
 Current Rating: 3A AC(rms)/DC
 Voltage Rating: 350V AC(rms)/DC
 Contact Resistance: 20 mΩ Max
 Insulation Resistance: 1000 MΩ Min
 Withstanding Voltage: 500V AC r.m.s
 Temperature Range—Operating: -25°C~+85°C

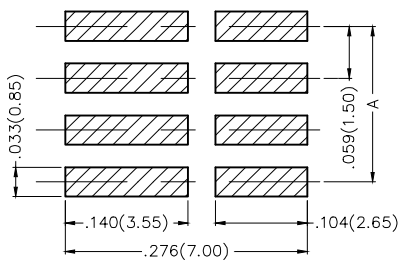
Material and Plating
 Housing: PA6T (UL 94V-0)
 Pin: Brass/ Tin Plated



Ordering Information

FWF 150 09 — S XX S 2 4 W5 M
 1 2 3 4 5 6 7 8 9 10

| | | | | | | | | | |
|---|-----------------|---|-----------------|---|-----------------|---|--------------|----|-----------|
| 1 | Category | 2 | Series Number | 3 | Distinction No. | 4 | Row Option | 5 | Circuits |
| | FWF—Wafer | | 150—Pitch1.50mm | | 09 | | S—Single Row | | XX |
| 6 | Entry Angle | 7 | Plating | 8 | Material—Resin | 9 | Color—Resin | 10 | Packaging |
| | S—180° Vertical | | 2—Tin Plated | | 4—PA6T | | W5—Natural | | M—Reel |



Recommended P.C.Board Layout
 General Tolerances: ±0.05mm

| Circuits (n) | Part No. | Dimensions(in/mm) | | | Circuits (n) | Part No. | Dimensions(in/mm) | | |
|--------------|--------------------|-------------------|-------------|-------------|--------------|--------------------|-------------------|-------------|-------------|
| | | A | B | C | | | A | B | C |
| 2 | FWF15009-S02S24W5M | .059(1.50) | .169(4.30) | .132(3.35) | 9 | FWF15009-S09S24W5M | .472(12.00) | .583(14.80) | .545(13.85) |
| 3 | FWF15009-S03S24W5M | .118(3.00) | .228(5.80) | .191(4.85) | 10 | FWF15009-S10S24W5M | .531(13.50) | .642(16.30) | .604(15.35) |
| 4 | FWF15009-S04S24W5M | .177(4.50) | .287(7.30) | .250(6.35) | 11 | FWF15009-S11S24W5M | .591(15.00) | .701(17.80) | .663(16.85) |
| 5 | FWF15009-S05S24W5M | .236(6.00) | .346(8.80) | .309(7.85) | 12 | FWF15009-S12S24W5M | .650(16.50) | .760(19.30) | .722(18.35) |
| 6 | FWF15009-S06S24W5M | .295(7.50) | .406(10.30) | .368(9.35) | 13 | FWF15009-S13S24W5M | .709(18.00) | .819(20.80) | .781(19.85) |
| 7 | FWF15009-S07S24W5M | .354(9.00) | .465(11.80) | .427(10.85) | 14 | FWF15009-S14S24W5M | .768(19.50) | .878(22.30) | .841(21.35) |
| 8 | FWF15009-S08S24W5M | .413(10.50) | .524(13.30) | .486(12.35) | 15 | FWF15009-S15S24W5M | .827(21.00) | .937(23.80) | .900(22.85) |

| | | | | | | | | | |
|----------------------------|---------------------------------------|----------|------------|-----------|--|----------|------------------------|--------------------|---------------|
| THIRD ANGLE PROJECTION | GENERAL TOLERANCES (UNLESS SPECIFIED) | | APPROVE BY | DATE | PART NO. | ITEM NO. | Leader Of Industry | | |
| | X.±.012(0.30) | X.±5' | FRANK | 09/MAR/17 | | | | FWF15009-SXXS24W5M | FWF15009 |
| DESIGN UNITS | X.X±.008(0.20) | X.±2' | CHECKED BY | DATE | TITLE | | | REV 0 | SHEET NO. 1/1 |
| Inch (metric) | X.XX±.006(0.15) | .XX±1" | CHERRY | 09/MAR/17 | Wire to Board (Wafer) Pitch 1.5mm 180° Vertical (SMT) | | | | |
| SCALE | X.XXX±.004(0.10) | .XX±0.5' | DRAWN BY | DATE | THIS DRAWING CONTAINS INFORMATION THAT IS PROPRIETARY TO TXGA INDUSTRIAL ELECTRONICS(S.Z)CO.,LTD AND SHOULD NOT BE USED WITHOUT WRITTEN PERMISSION | | | | |
| 5:1 | | | KATE | 09/MAR/17 | | | | | |

X-ON Electronics

Largest Supplier of Electrical and Electronic Components

Click to view similar products for [Headers & Wire Housings](#) category:

Click to view products by [TXGA](#) manufacturer:

Other Similar products are found below :

[0015917161](#) [0022155065](#) [57102-F02-18ULF](#) [58102-G61-06LF](#) [582553-1](#) [01.001.5753.1](#) [0050291907](#) [02.125.8002.8](#) [609-3404](#) [61062-3](#)
[CSU011177004](#) [622-0430](#) [622-3653LF](#) [63453-116](#) [636-1030](#) [636-1427](#) [636-3427](#) [636-4007](#) [641938-9](#) [65495-038](#) [65692-001LF](#) [65781-018](#)
[65781-047](#) [65817-010LF](#) [65817-015LF](#) [67095-007LF](#) [67601157](#) [68631-112](#) [68645-018](#) [699319-000](#) [70.362.1628.0](#) [70-4210](#) [70-4226B](#) [70-](#)
[4853B](#) [71.350.2428.0](#) [733-134](#) [733-162](#) [760-3052](#) [MHR-64-VUAL](#) [80.063.4001.1](#) [800-90-001-10-001000](#) [801-43-002-10-013000](#)
[801-43-006-10-002000](#) [803-43-024-10-001000](#) [803-93-012-10-001000](#) [8-1437020-4](#) [819-22-004-30-001101](#) [820-22-006-30-001101](#)
[820-22-008-30-001101](#) [821-22-002-10-001101](#)