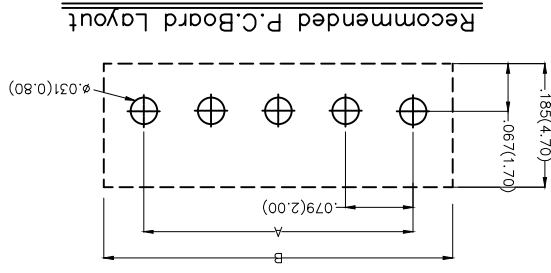
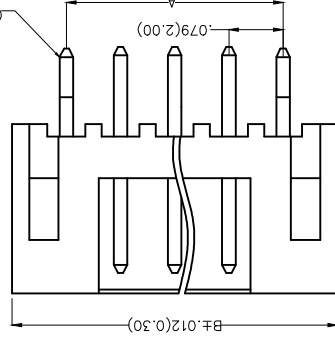
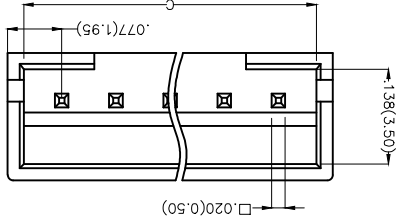
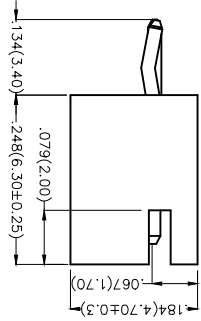


| REV | LOCATIONS | DESCRIPTION | DATE | REVISER | APPD |
|-----|-----------|-------------|------|---------|------|
|     |           |             |      |         |      |

Electrical  
 Current Rating: 2.0A AC(rms)/DC  
 Voltage Rating: 100V AC(rms)/DC  
 Contact Resistance: 10 mΩ Max  
 Insulation Resistance: 1000 MΩ MIN  
 Withstanding Voltage: 800V AC r.m.s  
 Temperature Range—Operating: -25°C~+85°C  
 Material and Plating  
 Housing: PA66 UL 94V-2)  
 Contact Pin: Brass  
 Plating: Tin Plated



### Ordering Information

FWF 200 01 - S XX S 2 2 W1 B

|    |                 |                 |
|----|-----------------|-----------------|
| 1  | Category        | FWF-Water       |
| 2  | Series Number   | 200-Pitch 2.0mm |
| 3  | Distinction No. | 01              |
| 4  | Row Option      | S-Single Row    |
| 5  | Circuits        | XX              |
| 6  | Entry Angle     | S-180° Vertical |
| 7  | Plating         | 2-Tin Plated    |
| 8  | Material-Resin  | 2-PA66          |
| 9  | Color-Resin     | W1-White        |
| 10 | Packaging       | B-PE Bag        |

|                            |                |                  |          |           |          |   |   |               |
|----------------------------|----------------|------------------|----------|-----------|----------|---|---|---------------|
| THIRD ANGLE PROJECTION     | APPROVE BY     | FRANK            | DATE     | 18/JUN/13 | PART NO. | FWF20001-SXXS22W1B                                    | ITEM NO.  | FWF20001      |
|                            | CHECKED BY     | JACOB            | DATE     | 18/JUN/13 | TITLE    | Wire to Board (Water) Pitch 2.0mm 180° Vertical (DIP) | REV 0   | SHEET NO. 1/2 |
| DESIGN UNITS Inch (metric) | X.X±.008(0.20) | X.±.2            | DRAWN BY | CHERRY    | DATE     | 18/JUN/13   | THIS DRAWING CONTAINS INFORMATION THAT IS PROPRIETARY TO TXGA INDUSTRIAL ELECTRONICS(SZ)CO.,LTD AND SHOULD NOT BE USED WITHOUT WRITTEN PERMISSION |               |
| SCALE                      | A4             | X.XXX±.004(0.10) |          |           |          |   |   |               |



|      |         |      |             |           |     |
|------|---------|------|-------------|-----------|-----|
| APPD | REVISER | DATE | DESCRIPTION | LOCATIONS | REV |
|      |         |      |             |           |     |

| Circuits<br>(n) | Part No. | Dimensions(in/mm) |   |   |
|-----------------|----------|-------------------|---|---|
|                 |          | A                 | B | C |

|    |                    |              |              |              |
|----|--------------------|--------------|--------------|--------------|
| 2  | FWF20001-S02S22W1B | .079(2.00)   | .232(5.90)   | .197(5.00)   |
| 3  | FWF20001-S03S22W1B | .157(4.00)   | .311(7.90)   | .157(7.00)   |
| 4  | FWF20001-S04S22W1B | .236(6.00)   | .390(9.90)   | .354(9.00)   |
| 5  | FWF20001-S05S22W1B | .315(8.00)   | .469(11.90)  | .433(11.00)  |
| 6  | FWF20001-S06S22W1B | .394(10.00)  | .547(13.90)  | .512(13.00)  |
| 7  | FWF20001-S07S22W1B | .472(12.00)  | .626(15.90)  | .591(15.00)  |
| 8  | FWF20001-S08S22W1B | .551(14.00)  | .705(17.90)  | .670(17.00)  |
| 9  | FWF20001-S09S22W1B | .630(16.00)  | .783(19.90)  | .748(19.00)  |
| 10 | FWF20001-S10S22W1B | .709(18.00)  | .862(21.90)  | .827(21.00)  |
| 11 | FWF20001-S11S22W1B | .787(20.00)  | .941(23.90)  | .906(23.00)  |
| 12 | FWF20001-S12S22W1B | .866(22.00)  | 1.020(25.90) | .984(25.00)  |
| 13 | FWF20001-S13S22W1B | .945(24.00)  | 1.098(27.90) | 1.063(27.00) |
| 14 | FWF20001-S14S22W1B | 1.024(26.00) | 1.177(29.90) | 1.142(29.00) |
| 15 | FWF20001-S15S22W1B | 1.102(28.00) | 1.256(31.90) | 1.220(31.00) |
| 16 | FWF20001-S16S22W1B | 1.181(30.00) | 1.335(33.90) | 1.299(33.00) |

|   |        |      |           |  |                   |          |  |
|---|--------|------|-----------|--|-------------------|----------|--|
| APPROVE BY  | FRANK  | DATE | 18/JUN/13 | PART NO.   | FWF20001-SXS22W1B | ITEM NO. |  |
| CHECKED BY  | JACOB  | DATE | 18/JUN/13 | TITLE  | FWF20001          |          |  |
| DRAWN BY  | CHERRY | DATE | 18/JUN/13 | Wire to Board (Water)<br>Pitch 2.0mm 180° Vertical (DIP) |                   |          |  |
| THIS DRAWING CONTAINS INFORMATION THAT IS PROPRIETARY TO TXGA INDUSTRIAL ELECTRONICS(SZ)CO.,LTD AND SHOULD NOT BE USED WITHOUT WRITTEN PERMISSION |        |      |           |  |                   |          |  |

|  |                |               |        |
|--|----------------|---------------|--------|
| GENERAL TOLERANCES<br>(UNLESS SPECIFIED) | X±.012(0.30)   | CHECKED BY    | X±.5   |
| DESIGN UNITS<br>Inch (metric)            | X.X±.008(0.20) | DRAWN BY      | X.X±.1 |
| SCALE                                    | 5:1            | SHEET NO. 2/2 |        |
| SIZE                                     | A4             | REV 0         |        |
|  |                | SHEET NO. 2/2 |        |

8 7 6 5 4 3 2 1

E D C B A

F

8 7 6 5 4 3 2 1

8 7 6 5 4 3 2 1

A B C D E F

## X-ON Electronics

Largest Supplier of Electrical and Electronic Components

*Click to view similar products for [Headers & Wire Housings](#) category:*

*Click to view products by [TXGA](#) manufacturer:*

Other Similar products are found below :

[95000-104TRLF](#) [10135584-644402LF](#) [DF62W-EP2022PCA](#) [95000-106TRLF](#) [DF62W-2022SCA](#) [DF62W-EP2022PC](#) [2203348](#) [DF62W-2022SC](#) [1084018](#) [1029039](#) [1084017](#) [802-10-012-10-002000](#) [1112640](#) [1112639](#) [891-007-9SS-BST1T](#) [000-34000](#) [0008550134](#) [0009482033](#) [0009507031](#) [57102-F02-18ULF](#) [57102-S06-03LF](#) [57202-S52-04LF](#) [PCN6-15S-2.5E](#) [0039019024](#) [58102-G61-06LF](#) [582553-1](#) [0009485154](#) [0009508121](#) [0022285053](#) [0050291907](#) [018731A](#) [LY20-4P-DT1-P1E-BR](#) [02.125.8002.8](#) [60101931](#) [60598-1 \(Cut Strip\)](#) [M1625-3R/100](#) [61062-3](#) [61082-181009](#) [CSU011177004](#) [636-1427](#) [638009-1](#) [641938-9](#) [641991-4](#) [644168-1](#) [644827-2](#) [647662-1](#) [65039-019ELF](#) [65692-001LF](#) [65781-018](#) [65781-047](#)