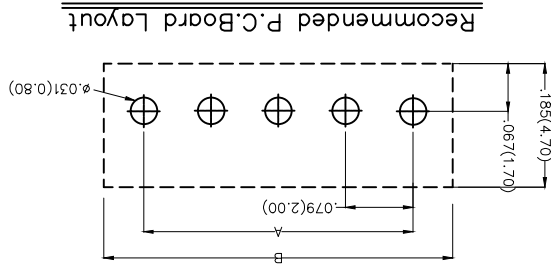
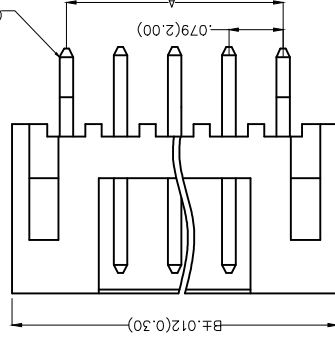
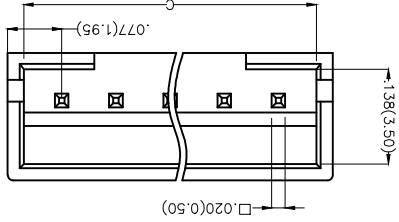
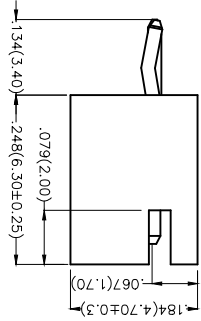


REV	LOCATIONS	DESCRIPTION	DATE	REVISER	APPD

Electrical
 Current Rating: 2.0A AC(rms)/DC
 Voltage Rating: 100V AC(rms)/DC
 Contact Resistance: 10 mΩ Max
 Insulation Resistance: 1000 MΩ MIN
 Withstanding Voltage: 800V AC r.m.s
 Temperature Range—Operating: -25°C~+85°C
 Material and Plating
 Housing: PA66 UL 94V-2)
 Contact Pin: Brass
 Plating: Tin Plated



Ordering Information

FWF 200 01 - S XX S 2 2 W1 B
 1 2 3 4 5 6 7 8 9 10

- 1 Category: FWF-Water
- 2 Series Number: 200-Pitch 2.0mm
- 3 Distinction No.: 01
- 4 Row Option: S-Single Row
- 5 Circuits: XX
- 6 Entry Angle: S-180° Vertical
- 7 Plating: 2-Tin Plated
- 8 Material-Resin: 2-PA66
- 9 Color-Resin: W1-White
- 10 Packaging: B-PE Bag


 THIRD ANGLE PROJECTION (UNLESS SPECIFIED)	SCALE	5:1	A4	X.XX±.004(0.10)	.XX±.05	CHERRY	18/JUN/13	DATE	18/JUN/13	WIRE TO BOARD (WATER) PITCH 2.0mm 180° VERTICAL (DIP)	REV 0	SHEET NO. 1/2
	DESIGN UNITS	Inch (metric)	X.X±.008(0.20)	X.±.2	JACOB	18/JUN/13	DATE	18/JUN/13	TITLE	FWF20001-SXXS22W1B	FWF20001	ITEM NO.
GENERAL TOLERANCES (UNLESS SPECIFIED)	APPROVE BY	FRANK	18/JUN/13	DATE	FWF20001-SXXS22W1B	FWF20001	PART NO.	ITEM NO.	DATE	18/JUN/13	DATE	18/JUN/13
CHECKED BY	JACOB	18/JUN/13	DATE	18/JUN/13	DATE	18/JUN/13	DATE	18/JUN/13	DATE	18/JUN/13	DATE	18/JUN/13
DRAWN BY	CHERRY	18/JUN/13	DATE	18/JUN/13	DATE	18/JUN/13	DATE	18/JUN/13	DATE	18/JUN/13	DATE	18/JUN/13
SCALE	5:1	A4	X.XX±.004(0.10)	.XX±.05	CHERRY	18/JUN/13	DATE	18/JUN/13	DATE	18/JUN/13	DATE	18/JUN/13

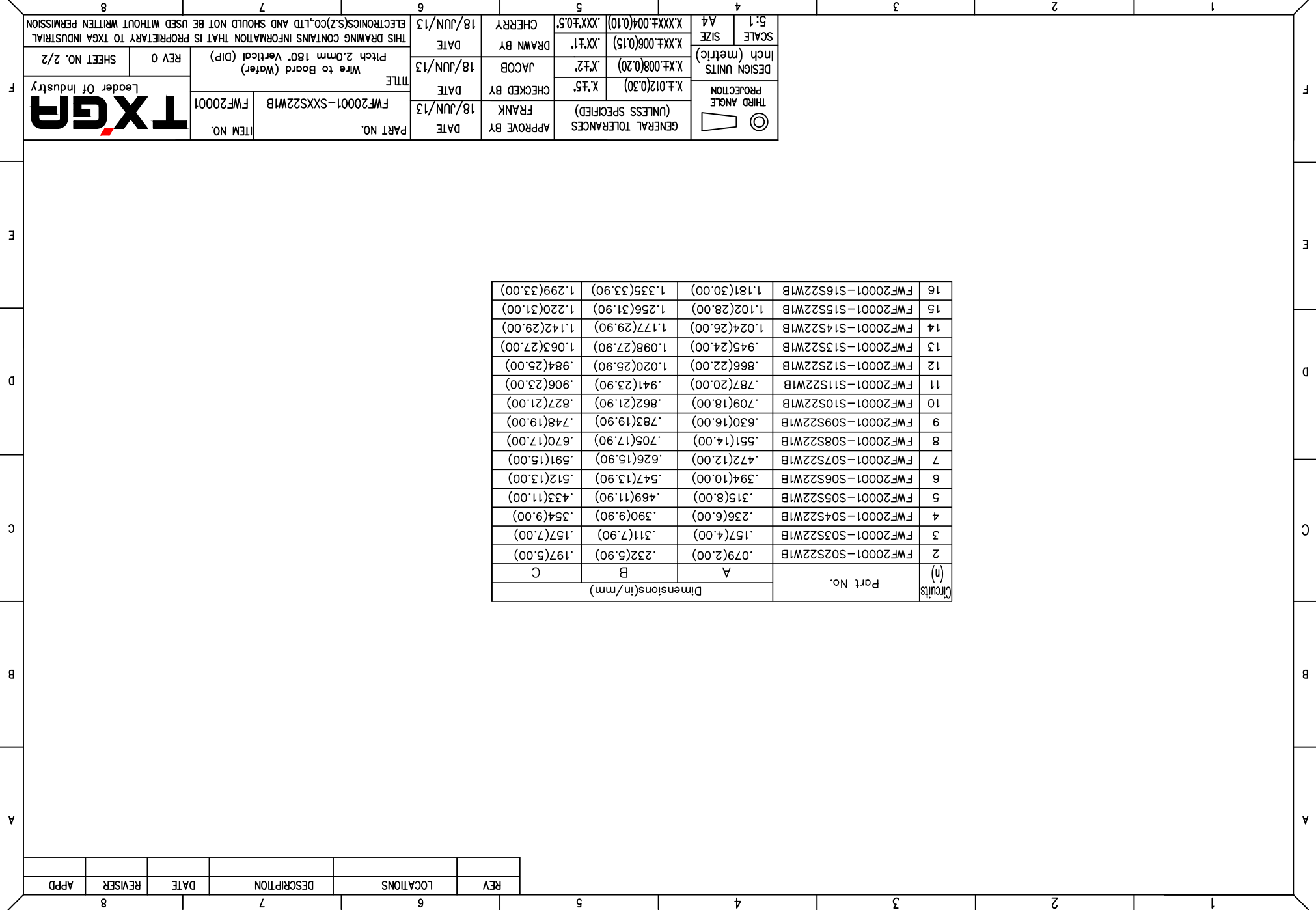


THIS DRAWING CONTAINS INFORMATION THAT IS PROPRIETARY TO TXGA INDUSTRIAL ELECTRONICS(SZ)CO.,LTD AND SHOULD NOT BE USED WITHOUT WRITTEN PERMISSION

APPD	REVISER	DATE	DESCRIPTION	LOCATIONS	REV

Circuits (n)	Part No.	Dimensions(in/mm)		
		A	B	C
2	FWF20001-S02S22W1B	.079(2.00)	.232(5.90)	.197(5.00)
3	FWF20001-S03S22W1B	.157(4.00)	.311(7.90)	.157(7.00)
4	FWF20001-S04S22W1B	.236(6.00)	.390(9.90)	.354(9.00)
5	FWF20001-S05S22W1B	.315(8.00)	.469(11.90)	.433(11.00)
6	FWF20001-S06S22W1B	.394(10.00)	.547(13.90)	.512(13.00)
7	FWF20001-S07S22W1B	.472(12.00)	.626(15.90)	.591(15.00)
8	FWF20001-S08S22W1B	.551(14.00)	.705(17.90)	.670(17.00)
9	FWF20001-S09S22W1B	.630(16.00)	.783(19.90)	.748(19.00)
10	FWF20001-S10S22W1B	.709(18.00)	.862(21.90)	.827(21.00)
11	FWF20001-S11S22W1B	.787(20.00)	.941(23.90)	.906(23.00)
12	FWF20001-S12S22W1B	.866(22.00)	1.020(25.90)	.984(25.00)
13	FWF20001-S13S22W1B	.945(24.00)	1.098(27.90)	1.063(27.00)
14	FWF20001-S14S22W1B	1.024(26.00)	1.177(29.90)	1.142(29.00)
15	FWF20001-S15S22W1B	1.102(28.00)	1.256(31.90)	1.220(31.00)
16	FWF20001-S16S22W1B	1.181(30.00)	1.335(33.90)	1.299(33.00)

 THIRD ANGLE PROJECTION		GENERAL TOLERANCES (UNLESS SPECIFIED) APPROVE BY FRANK DATE 18/JUN/13 PART NO. FWF20001-SXS22W1B ITEM NO. FWF20001	CHECKED BY JACOB DATE 18/JUN/13 TITLE Wire to Board (Water) Pitch 2.0mm 180° Vertical (DIP)	DRAWN BY CHERRY DATE 18/JUN/13 THIS DRAWING CONTAINS INFORMATION THAT IS PROPRIETARY TO TXGA INDUSTRIAL ELECTRONICS(SZ)CO.,LTD AND SHOULD NOT BE USED WITHOUT WRITTEN PERMISSION
DESIGN UNITS Inch (metric)	X.±.012(0.30)	X.±.008(0.20)	X.±.006(0.15)	X.XXX±.004(0.10)
SCALE SIZE 5:1 A4	X.±.012(0.30)	X.±.008(0.20)	X.±.006(0.15)	X.XXX±.004(0.10)



X-ON Electronics

Largest Supplier of Electrical and Electronic Components

Click to view similar products for [Headers & Wire Housings](#) category:

Click to view products by [TXGA](#) manufacturer:

Other Similar products are found below :

[95000-104TRLF](#) [10135584-644402LF](#) [DF62W-EP2022PCA](#) [95000-106TRLF](#) [DF62W-2022SCA](#) [DF62W-EP2022PC](#) [2203348](#) [DF62W-2022SC](#) [1084018](#) [1029039](#) [1084017](#) [802-10-012-10-002000](#) [1112640](#) [1112639](#) [891-007-9SS-BST1T](#) [000-34000](#) [0008550134](#) [0009482033](#) [0009507031](#) [57102-F02-18ULF](#) [57102-S06-03LF](#) [57202-S52-04LF](#) [PCN6-15S-2.5E](#) [0039019024](#) [58102-G61-06LF](#) [582553-1](#) [0009485154](#) [0009508121](#) [0022285053](#) [0050291907](#) [018731A](#) [LY20-4P-DT1-P1E-BR](#) [02.125.8002.8](#) [60101931](#) [60598-1 \(Cut Strip\)](#) [M1625-3R/100](#) [61062-3](#) [61082-181009](#) [CSU011177004](#) [636-1427](#) [638009-1](#) [641938-9](#) [641991-4](#) [644168-1](#) [644827-2](#) [647662-1](#) [65039-019ELF](#) [65692-001LF](#) [65781-018](#) [65781-047](#)