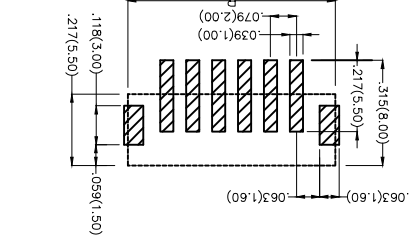
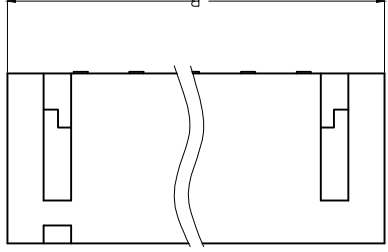
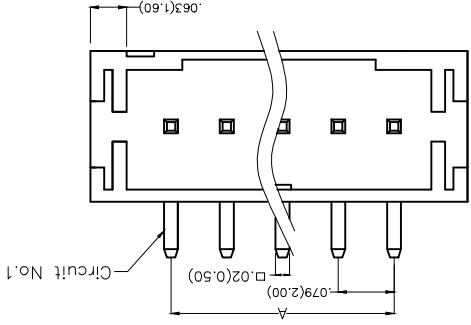
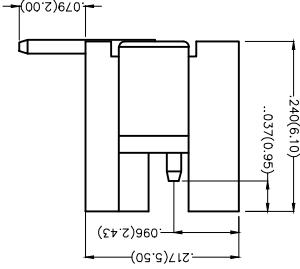


REV	LOCATIONS	DESCRIPTION	DATE	REVISER	APPD
1	△	MPQ 1500pcs/Reel Change to 1000pcs/Reel	20150921	CHERRY	FAN
2	△	Change the packing specification	05/MAY/17	KATE	FRANK

Electrical
Current Rating: 2.0A AC(rms)/DC
Voltage Rating: 100V AC(rms)/DC
Contact Resistance: 10 mΩ Max
Insulation Resistance: 1000 MΩ MIN
Withstanding Voltage: 800V AC r.m.s
Temperature Range—Operating: -25°C~+85°C
Material and Plating
Housing: PA9T (UL 94V-0)
Contact Pin: Brass
Plating: Tin Plated



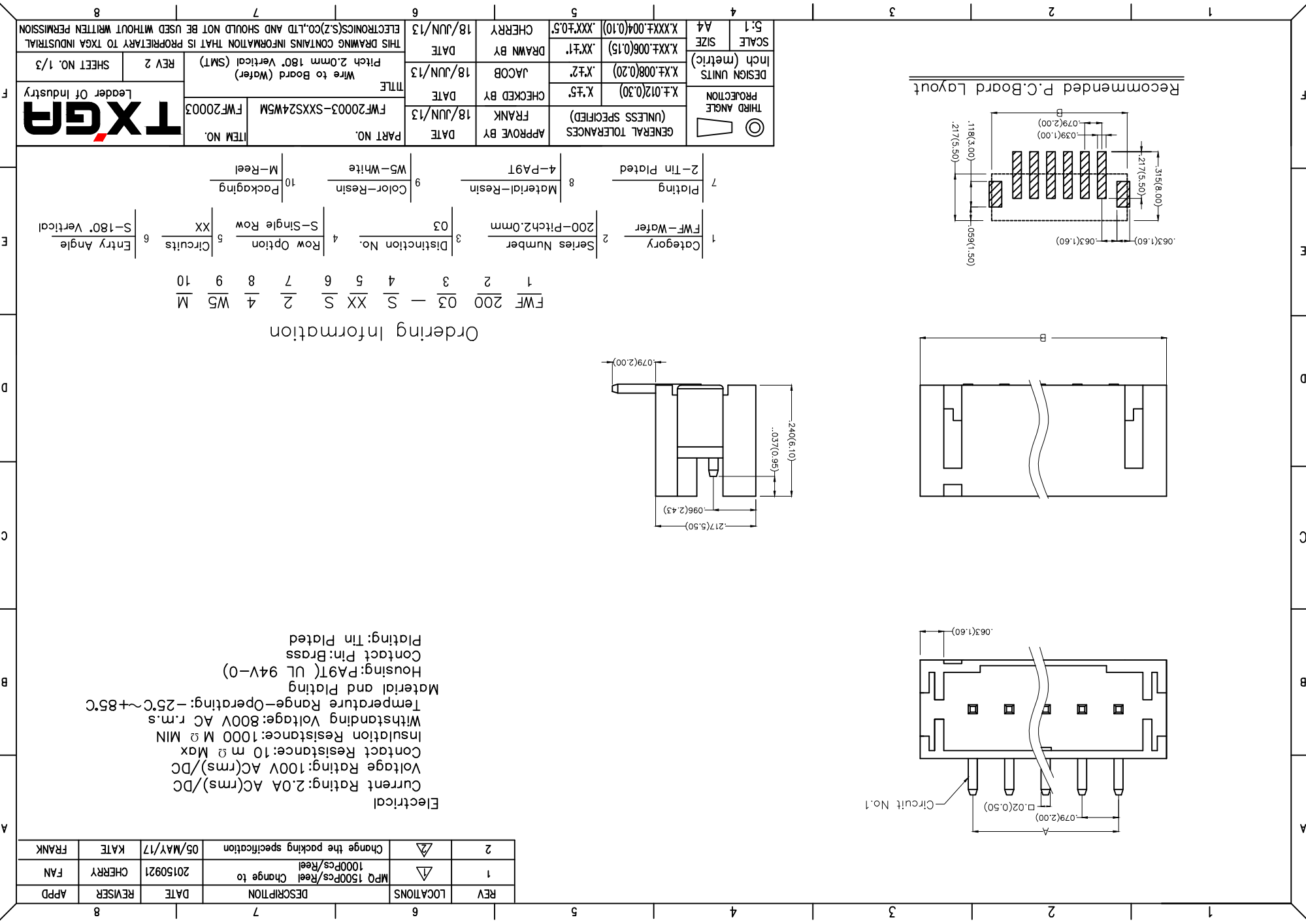
Recommended P.C.Board Layout

1	Category	FWF-Water	2	Series Number	200-Pitch 2.0mm
3	Distinction No.	03	4	Row Option	S-Single Row
5	Circuits	XX	6	Entry Angle	S-180° Vertical
7	Plating	2-Tin Plated	8	Material-Resin	4-PA9T
9	Color-Resin	WS-White	10	Packaging	M-Reel

Ordering Information


FWF 200 03 - S XX S 2 4 W5 M
1 2 3 4 5 6 7 8 9 10

GENERAL TOLERANCES (UNLESS SPECIFIED)	APPROVE BY	DATE	PART NO.	ITEM NO.
THIRD ANGLE PROJECTION	FRANK	18/JUN/13	FWF20003-SXXS24W5M	FWF20003
DESIGN UNITS Inch (metric)	CHECKED BY	DATE	TITLE	
A4	JACOB	18/JUN/13	Wire to Board (Water) Pitch 2.0mm 180° Vertical (SMT)	REV 2
SCALE	DRAWN BY	DATE	THIS DRAWING CONTAINS INFORMATION THAT IS PROPRIETARY TO TXGA INDUSTRIAL ELECTRONICS(SZ)CO.,LTD AND SHOULD NOT BE USED WITHOUT WRITTEN PERMISSION	
5:1	CHERRY	18/JUN/13		

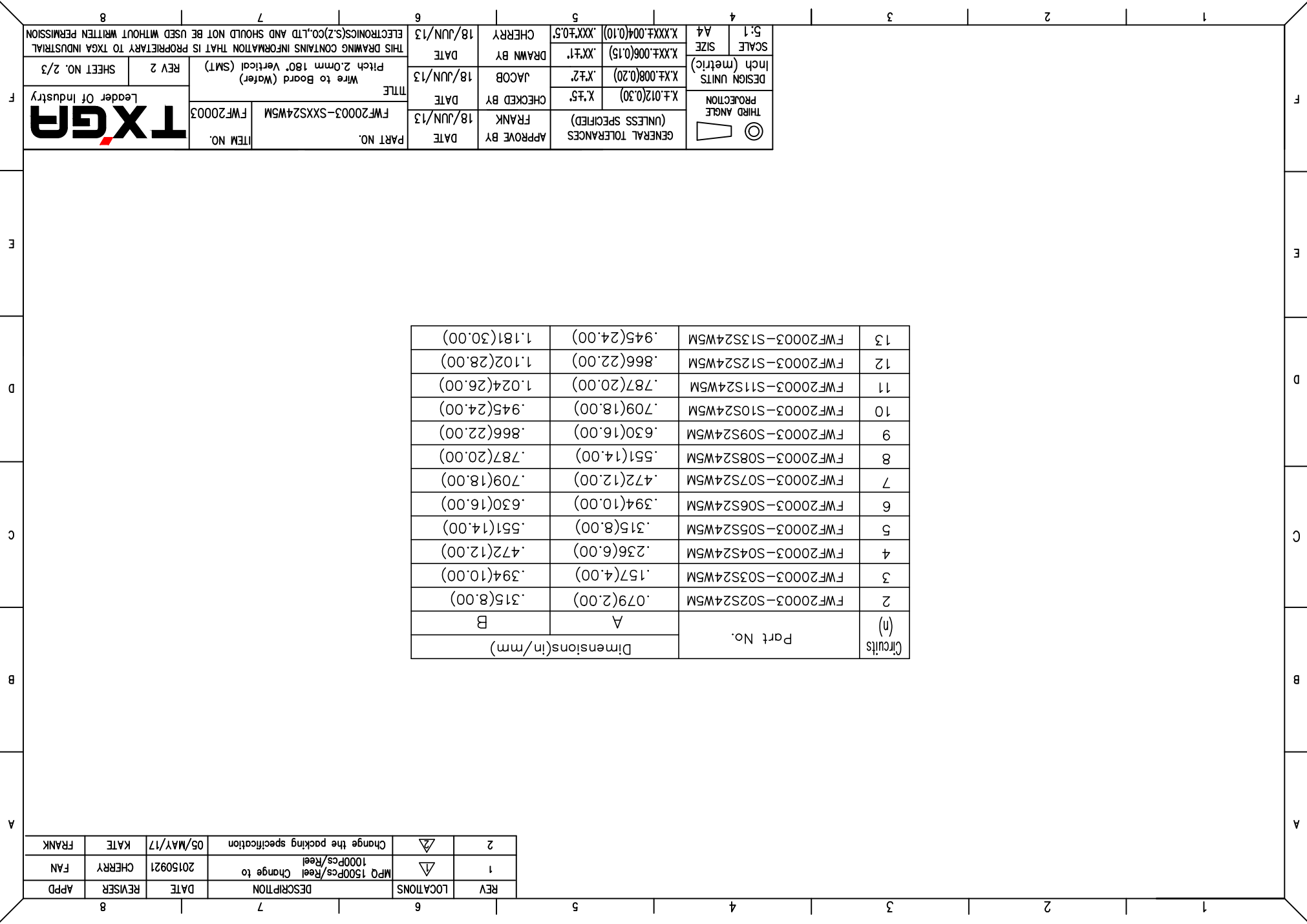


REV	LOCATIONS	DESCRIPTION	DATE	REVISER	APPD
1	▽	MPQ 1500Pcs/Reel Change to 1000Pcs/Reel	20150921	CHERRY	FAN
2	▽	Change the packing specification	05/MAY/17	KATE	FRANK

Circuits (n)	Part No.	Dimensions(in/mm)	
		A	B
2	FWF20003-S02S24W5M	.079(2.00)	.315(8.00)
3	FWF20003-S03S24W5M	.157(4.00)	.394(10.00)
4	FWF20003-S04S24W5M	.236(6.00)	.472(12.00)
5	FWF20003-S05S24W5M	.315(8.00)	.551(14.00)
6	FWF20003-S06S24W5M	.394(10.00)	.630(16.00)
7	FWF20003-S07S24W5M	.472(12.00)	.709(18.00)
8	FWF20003-S08S24W5M	.551(14.00)	.787(20.00)
9	FWF20003-S09S24W5M	.630(16.00)	.866(22.00)
10	FWF20003-S10S24W5M	.709(18.00)	.945(24.00)
11	FWF20003-S11S24W5M	.787(20.00)	1.024(26.00)
12	FWF20003-S12S24W5M	.866(22.00)	1.102(28.00)
13	FWF20003-S13S24W5M	.945(24.00)	1.181(30.00)

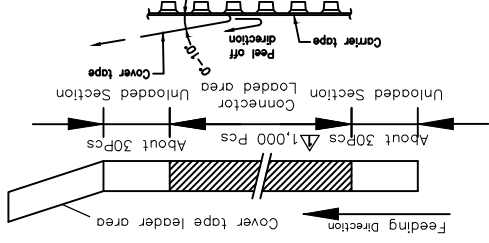
 THIRD ANGLE PROJECTION		GENERAL TOLERANCES (UNLESS SPECIFIED)	APPROVE BY FRANK	DATE 18/JUN/13	PART NO. FWF20003-SXXS24W5M	ITEM NO. FWF20003
DESIGN UNITS Inch (metric)	X.±.012(0.30)	X.±.008(0.20)	X.±.006(0.15)	X.±.004(0.10)	X.±.004(0.10)	X.±.004(0.10)
SCALE 5:1 A4	X.±.006(0.15)	X.±.006(0.15)	X.±.006(0.15)	X.±.006(0.15)	X.±.006(0.15)	X.±.006(0.15)

CHECKED BY FRANK	DATE 18/JUN/13	TITLE Wire to Board (Water) Pitch 2.0mm 180° Vertical (SMT)	SHEET NO. 2/3
DRAWN BY JACOB	DATE 18/JUN/13	THIS DRAWING CONTAINS INFORMATION THAT IS PROPRIETARY TO TXGA INDUSTRIAL ELECTRONICS(SZ)CO.,LTD AND SHOULD NOT BE USED WITHOUT WRITTEN PERMISSION	
CHERRY	DATE 18/JUN/13		

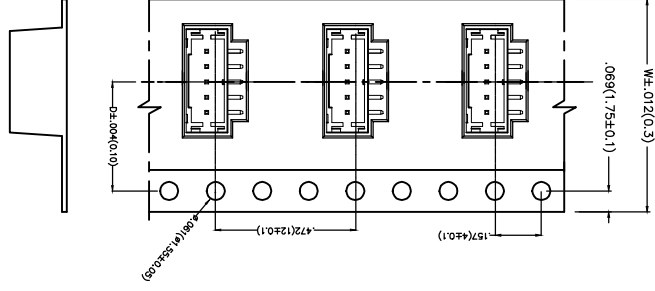
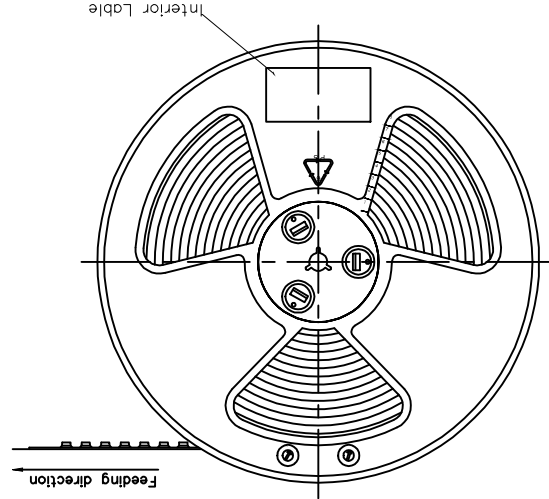
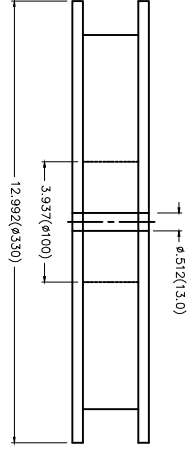
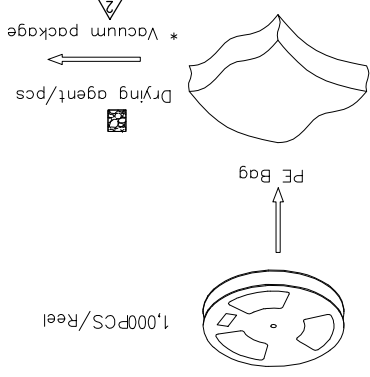
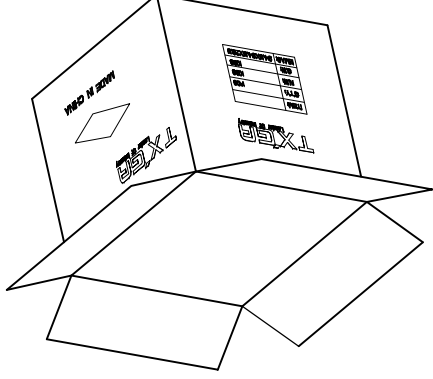


REV	LOCATIONS	DESCRIPTION	DATE	REVISER	APPD
1		MPQ 1500Pcs/Reel Change to 1000Pcs/Reel	20150921	CHERRY	FAN
2		Change the packing specification	05/MAY/17	KATE	FRANK

- Note:
1. 10 sprocket hole cumulative tolerance±0.2
 2. Carrier camber is within 1.0mm in 100mm
 3. Material: White Conductive polyethylene Alloy 100% recyclable
 4. All dimensions meet EIA-481-3 requirements
 5. Component load per 13" reel: 1,000pcs



Circuits	Dimensions(in/mm)	
	D	W
(n)	.295(7.50)	.530(16.00)
2	.295(7.50)	.530(16.00)
3	.295(7.50)	.530(16.00)
4	.453(11.50)	.945(24.00)
4	.453(11.50)	.945(24.00)
5	.453(11.50)	.945(24.00)
5	.453(11.50)	.945(24.00)
6	.453(11.50)	.945(24.00)
6	.453(11.50)	.945(24.00)
7	.559(14.20)	1.260(32.00)
7	.559(14.20)	1.260(32.00)
8	.559(14.20)	1.260(32.00)
8	.559(14.20)	1.260(32.00)



THIRD ANGLE PROJECTION		DESIGN UNITS		SCALE	
APPROVE BY	DATE	FRANK	18/JUN/13	5:1	A4
CHECKED BY	DATE	JACOB	18/JUN/13	X.XX±.006(0.15)	X.XX±.006(0.15)
DRAWN BY	DATE	CHERRY	18/JUN/13	X.XX±.004(0.10)	X.XX±.004(0.10)

GENERAL TOLERANCES (UNLESS SPECIFIED)
X.±.012(0.30)
X.±.008(0.20)
X.±.006(0.15)
X.XX±.004(0.10)

GENERAL TOLERANCES (UNLESS SPECIFIED)
X.±.012(0.30)
X.±.008(0.20)
X.±.006(0.15)
X.XX±.004(0.10)

THIS DRAWING CONTAINS INFORMATION THAT IS PROPRIETARY TO TXGA INDUSTRIAL ELECTRONICS(SZ)CO.,LTD AND SHOULD NOT BE USED WITHOUT WRITTEN PERMISSION

TXGA
Leader Of Industry

PART NO.	ITEM NO.	TITLE	REV 2	SHEET NO. 3/3
FWF20003-SXXS24W5M	FWF20003	Wire to Board (Water) Pitch 2.0mm 180° Vertical (SMT)		

X-ON Electronics

Largest Supplier of Electrical and Electronic Components

Click to view similar products for [Headers & Wire Housings](#) category:

Click to view products by [TXGA](#) manufacturer:

Other Similar products are found below :

[95000-104TRLF](#) [10135584-644402LF](#) [DF62W-EP2022PCA](#) [95000-106TRLF](#) [DF62W-2022SCA](#) [DF62W-EP2022PC](#) [2203348](#) [DF62W-2022SC](#) [1084018](#) [1029039](#) [1084017](#) [802-10-012-10-002000](#) [1112640](#) [1112639](#) [891-007-9SS-BST1T](#) [000-34000](#) [0008550134](#) [0009482033](#) [0009507031](#) [57102-F02-18ULF](#) [57102-S06-03LF](#) [57202-S52-04LF](#) [PCN6-15S-2.5E](#) [0039019024](#) [58102-G61-06LF](#) [582553-1](#) [0009485154](#) [0009508121](#) [0022285053](#) [0050291907](#) [018731A](#) [LY20-4P-DT1-P1E-BR](#) [02.125.8002.8](#) [60101931](#) [60598-1 \(Cut Strip\)](#) [M1625-3R/100](#) [61062-3](#) [61082-181009](#) [CSU011177004](#) [636-1427](#) [638009-1](#) [641938-9](#) [641991-4](#) [644168-1](#) [644827-2](#) [647662-1](#) [65039-019ELF](#) [65692-001LF](#) [65781-018](#) [65781-047](#)