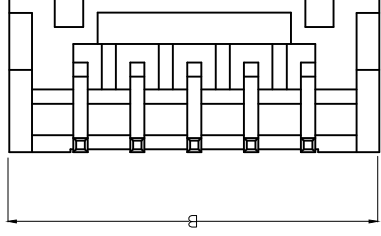
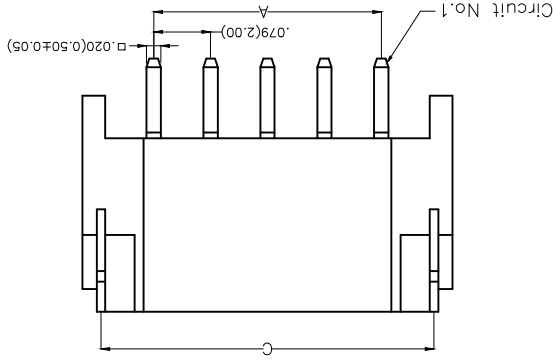
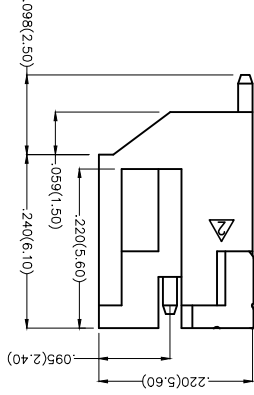


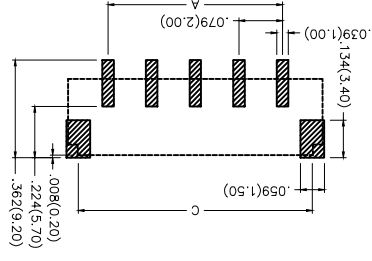
| REV | LOCATIONS | DESCRIPTION | DATE | REVISER | APPD |
|-----|-----------|---|-----------|---------|-------|
| 1 | △ | MPQ 1500Pcs/Reel Change into MPQ 1000Pcs/Reel | 20150921 | CHERRY | FAN |
| 2 | △ | Structure optimization | 16/JUL/18 | KATE | FRANK |

Electrical

Current Rating: 2.0A AC(rms)/DC
Voltage Rating: 100V AC(rms)/DC
Contact Resistance: 10 mΩ Max
Insulation Resistance: 1000 MΩ MIN
Withstanding Voltage: 800V AC r.m.s
Temperature Range—Operating: -25°C~+85°C
Material and Plating
Housing: PA9T (UL 94V-0)
Contact Pin: Brass/ Tin plated
Solder Tab: Copper alloy/ Tin plated



Recommended P.C.Board Layout



| 1 | Category | FWF-Water | 2 | Series Number | 200-Pitch2.0mm | 3 | Distinction No. | 04 | 4 | Row Option | S-Single Row | 5 | Circuits | XX | 6 | Entry Angle | B-90° Angle |
|---|----------|--------------|---|----------------|----------------|--|-----------------|----------|---------------------------------------|------------|--------------|---|----------|----|---|-------------|-------------|
| 7 <td>Plating</td> <td>2-Tin Plated</td> <td>8 <td>Material-Resin</td> <td>4-PA9T</td> <td>9 <td>Color-Resin</td> <td>W5-White</td> <td>10 <td>Packaging</td> <td>M-Reel</td> </td></td></td> | Plating | 2-Tin Plated | 8 <td>Material-Resin</td> <td>4-PA9T</td> <td>9 <td>Color-Resin</td> <td>W5-White</td> <td>10 <td>Packaging</td> <td>M-Reel</td> </td></td> | Material-Resin | 4-PA9T | 9 <td>Color-Resin</td> <td>W5-White</td> <td>10 <td>Packaging</td> <td>M-Reel</td> </td> | Color-Resin | W5-White | 10 <td>Packaging</td> <td>M-Reel</td> | Packaging | M-Reel | | | | | | |

Ordering Information

FWF 200 04 - S XX B 2 4 W5 M

| GENERAL TOLERANCES (UNLESS SPECIFIED) | APPROVE BY | DATE | PART NO. | ITEM NO. |
|---------------------------------------|-----------------|------------|---|---|
| X.±.012(0.30) | FRANK | 18/JUN/13 | FWF20004-SXXB24W5M | FWF20004 |
| THIRD ANGLE PROJECTION | DATE | CHECKED BY | TITLE | Wire to Board (Water) |
| | 18/JUN/13 | JACOB | Wire to Board (Water) Pitch 2.0mm 90° Angle (SMT) | REV 2 |
| DESIGN UNITS | SCALE | SIZE | DATE | THIS DRAWING CONTAINS INFORMATION THAT IS PROPRIETARY TO TXGA INDUSTRIAL ELECTRONICS(SZ)CO.,LTD AND SHOULD NOT BE USED WITHOUT WRITTEN PERMISSION |
| Inch (metric) | 5:1 | A4 | 18/JUN/13 | 18/JUN/13 |
| X.XX±.008(0.20) | X.XX±.006(0.15) | X.XX±.1 | CHERRY | SHEET NO. 1/3 |
| X.±.012(0.30) | X.XX±.004(0.10) | X.XX±.0.5 | | |



F

E

D

C

B

A

F

E

D

C

B

A

3

2

1

8

7

6

5

4

3

2

1

8

7


6

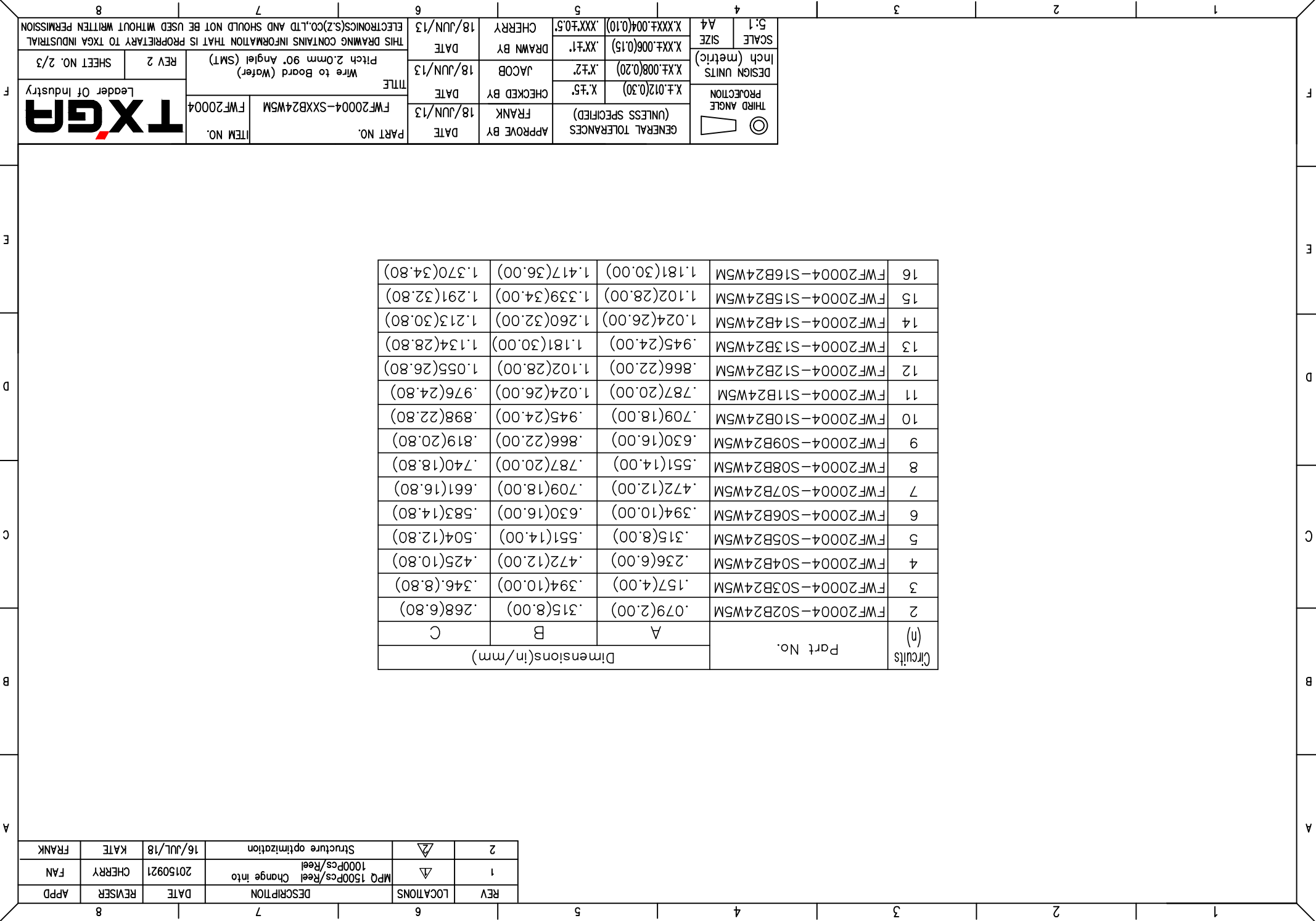
5

4

| REV | LOCATIONS | DESCRIPTION | DATE | REVERSER | APPD |
|-----|-----------|---|-----------|----------|-------|
| 1 | △ | MPQ 1500Pcs/Reel Change into MPQ 1000Pcs/Reel | 20150921 | CHERRY | FAN |
| 2 | ▽ | Structure optimization | 16/JUL/18 | KATE | FRANK |

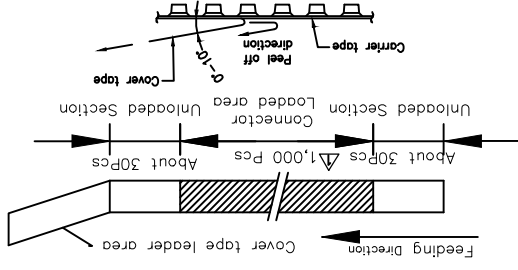
| Circuits (n) | Part No. | Dimensions(in/mm) | | |
|--------------|--------------------|-------------------|--------------|--------------|
| | | A | B | C |
| 2 | FWF20004-S02B24W5M | .079(2.00) | .315(8.00) | .268(6.80) |
| 3 | FWF20004-S03B24W5M | .157(4.00) | .394(10.00) | .346.(8.80) |
| 4 | FWF20004-S04B24W5M | .236(6.00) | .472(12.00) | .425(10.80) |
| 5 | FWF20004-S05B24W5M | .315(8.00) | .551(14.00) | .504(12.80) |
| 6 | FWF20004-S06B24W5M | .394(10.00) | .630(16.00) | .583(14.80) |
| 7 | FWF20004-S07B24W5M | .472(12.00) | .709(18.00) | .661(16.80) |
| 8 | FWF20004-S08B24W5M | .551(14.00) | .787(20.00) | .740(18.80) |
| 9 | FWF20004-S09B24W5M | .630(16.00) | .866(22.00) | .819(20.80) |
| 10 | FWF20004-S10B24W5M | .709(18.00) | .945(24.00) | .898(22.80) |
| 11 | FWF20004-S11B24W5M | .787(20.00) | 1.024(26.00) | .976(24.80) |
| 12 | FWF20004-S12B24W5M | .866(22.00) | 1.102(28.00) | 1.055(26.80) |
| 13 | FWF20004-S13B24W5M | .945(24.00) | 1.181(30.00) | 1.134(28.80) |
| 14 | FWF20004-S14B24W5M | 1.024(26.00) | 1.260(32.00) | 1.213(30.80) |
| 15 | FWF20004-S15B24W5M | 1.102(28.00) | 1.339(34.00) | 1.291(32.80) |
| 16 | FWF20004-S16B24W5M | 1.181(30.00) | 1.417(36.00) | 1.370(34.80) |

| | | | | | | | | | | | |
|---|---------------|-----------------|----------|------------|--------|-----------|-----------|---|-----------------------------|----------|---------------|
|  THIRD ANGLE PROJECTION | DESIGN UNITS | X.±.012(0.30) | X.±.5 | CHECKED BY | FRANK | DATE | 18/JUN/13 | PART NO. | FWF20004-SXXB24W5M | ITEM NO. | FWF20004 |
| | Inch (metric) | X.X±.008(0.20) | X.±.2 | JACOB | DATE | 18/JUN/13 | TITLE | Wire to Board (Water) | Pitch 2.0mm 90° Angle (SMT) | REV 2 | SHEET NO. 2/3 |
| SCALE | SIZE | X.XX±.006(0.15) | X.±.1 | DRAWN BY | CHERRY | DATE | 18/JUN/13 | THIS DRAWING CONTAINS INFORMATION THAT IS PROPRIETARY TO TXGA INDUSTRIAL ELECTRONICS(SZ)CO.,LTD AND SHOULD NOT BE USED WITHOUT WRITTEN PERMISSION | | | |
| 5:1 | A4 | X.XX±.004(0.10) | .XXX±0.5 | | | | | | | | |



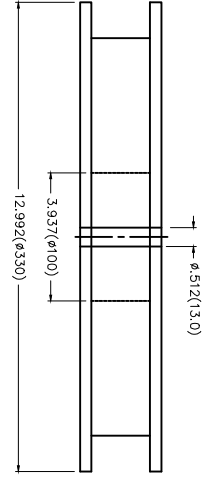
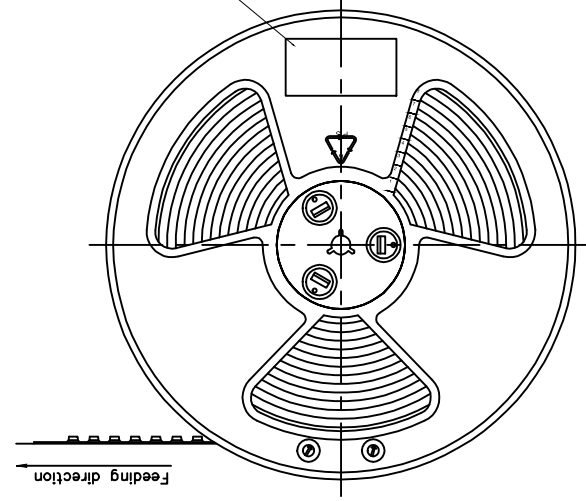
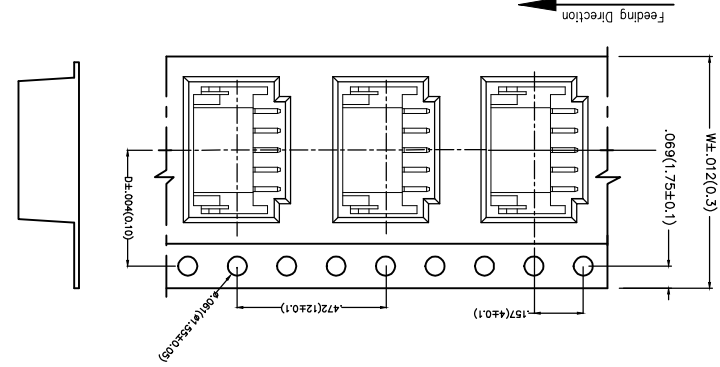
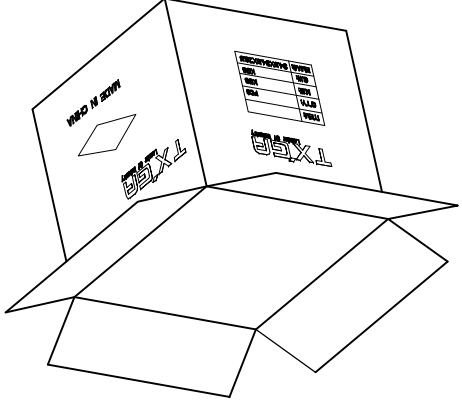
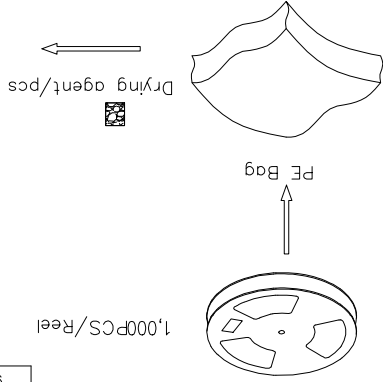
| REV | LOCATIONS | DESCRIPTION | DATE | REVISER | APPD |
|-----|-----------|---|-----------|---------|-------|
| 1 | △ | MPQ 1500Pcs/Reel Change into 1000Pcs/Reel | 20150921 | CHERRY | FAN |
| 2 | △ | Structure optimization | 16/JUL/18 | KATE | FRANK |

Note:
1. 10 sprocket hole cumulative tolerance±0.2
2. Carrier camber is within 1.0mm in 100mm
3. Material: White Conductive polystyrene Alloy 100% recyclable
4. All dimensions meet EIA-481-3 requirements
5. Component load per 13" reel: 1,000pcs



| Circuits | Dimensions(in/mm) | | Dimensions(in/mm) | |
|----------|-------------------|--------------|-------------------|--------------|
| 2 | .295(7.50) | .630(16.00) | .559(14.20) | 1.260(32.00) |
| 3 | .295(7.50) | .630(16.00) | .795(20.20) | 1.732(44.00) |
| 4 | .453(11.50) | .945(24.00) | .795(20.20) | 1.732(44.00) |
| 5 | .453(11.50) | .945(24.00) | .795(20.20) | 1.732(44.00) |
| 6 | .453(11.50) | .945(24.00) | .795(20.20) | 1.732(44.00) |
| 7 | .559(14.20) | 1.260(32.00) | .795(20.20) | 1.732(44.00) |
| 8 | .559(14.20) | 1.260(32.00) | .795(20.20) | 1.732(44.00) |
| 9 | .559(14.20) | 1.260(32.00) | .795(20.20) | 1.732(44.00) |

1,000Pcs/Reel



| THIRD ANGLE PROJECTION | DESIGN UNITS | SCALE | SIZE |
|--|--|---|--------------------|
| | X.X±.012(0.30) X.X±.008(0.20) X.X±.006(0.15) | 5:1 | A4 |
| GENERAL TOLERANCES (UNLESS SPECIFIED) | APPROVE BY | DATE | PART NO. |
| | FRANK | 18/JUN/13 | FWF20004-SXXB24WSM |
| CHECKED BY | DATE | TITLE | ITEM NO. |
| X.X±.012(0.30) X.X±.008(0.20) X.X±.006(0.15) | 18/JUN/13 | Wire to Board (Water) Pitch 2.0mm 90° Angle (SMT) | FWF20004 |
| DRAWN BY | DATE | THIS DRAWING CONTAINS INFORMATION THAT IS PROPRIETARY TO TXGA INDUSTRIAL ELECTRONICS(SZ)CO.,LTD AND SHOULD NOT BE USED WITHOUT WRITTEN PERMISSION | |
| CHERRY | 18/JUN/13 | | |



Leader Of Industry

REV 2 SHEET NO. 3/3

8 7 6 5 4 3 2 1

F

E

D

C

B

A

F

E

D

C

B

A

8

7

6

5

4

3

2

1

8

7

6

5

4

3

2

1

X-ON Electronics

Largest Supplier of Electrical and Electronic Components

Click to view similar products for [Headers & Wire Housings](#) category:

Click to view products by [TXGA](#) manufacturer:

Other Similar products are found below :

[95000-104TRLF](#) [10135584-644402LF](#) [DF62W-EP2022PCA](#) [95000-106TRLF](#) [DF62W-2022SCA](#) [DF62W-EP2022PC](#) [2203348](#) [DF62W-2022SC](#) [1084018](#) [1029039](#) [1084017](#) [802-10-012-10-002000](#) [1112640](#) [1112639](#) [891-007-9SS-BST1T](#) [000-34000](#) [0008550134](#) [0009482033](#) [0009507031](#) [57102-F02-18ULF](#) [57102-S06-03LF](#) [57202-S52-04LF](#) [PCN6-15S-2.5E](#) [0039019024](#) [58102-G61-06LF](#) [582553-1](#) [0009485154](#) [0009508121](#) [0022285053](#) [0050291907](#) [018731A](#) [LY20-4P-DT1-P1E-BR](#) [02.125.8002.8](#) [60101931](#) [60598-1 \(Cut Strip\)](#) [M1625-3R/100](#) [61062-3](#) [61082-181009](#) [CSU011177004](#) [636-1427](#) [638009-1](#) [641938-9](#) [641991-4](#) [644168-1](#) [644827-2](#) [647662-1](#) [65039-019ELF](#) [65692-001LF](#) [65781-018](#) [65781-047](#)