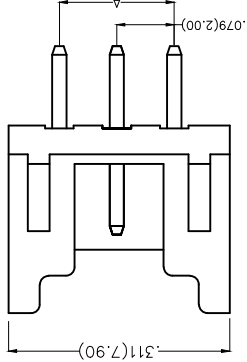
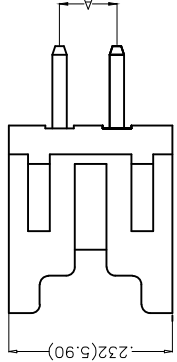
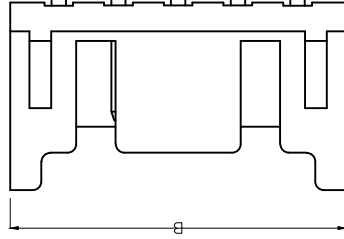
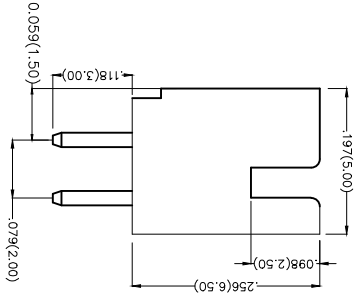
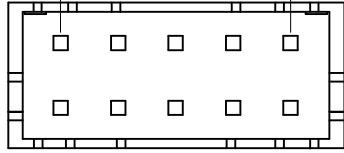


REV	LOCATIONS	DESCRIPTION	DATE	REVISER	APPD

**Electrical**  
 Current Rating: 3.0A AC(rms)/DC  
 Voltage Rating: 250V AC(rms)/DC  
 Contact Resistance: 10 mΩ Max  
 Insulation Resistance: 1000 MΩ MIN  
 Withstanding Voltage: 800V AC r.m.s  
 Temperature Range—Operating: -25°C~+85°C  
 Material and Plating  
 Housing: P46 (UL 94V-0)  
 Contact Pin: Brass  
 Plating: Tin Plated



**Ordering Information**

1	FWF	200	05	—	D	XX	S	2	2	W5	B
2	Category	Series Number	Distinction No.	4	Row Option	5	Circuits	6	XX	Entry Angle	S-180° Vertical

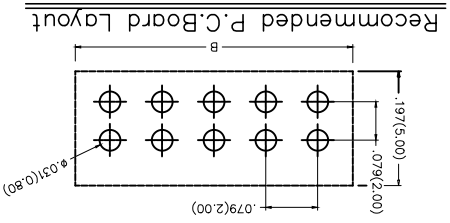
- 1 | FWF—Wafer
- 2 | Series Number
- 3 | Distinction No.
- 4 | Row Option
- 5 | Circuits
- 6 | Entry Angle
- 7 | Plating
- 8 | Material—Resin
- 9 | Color—Resin
- 10 | Packaging

- 1 | Category
- 2 | Series Number
- 3 | Distinction No.
- 4 | Row Option
- 5 | Circuits
- 6 | Entry Angle
- 7 | Plating
- 8 | Material—Resin
- 9 | Color—Resin
- 10 | Packaging

GENERAL TOLERANCES (UNLESS SPECIFIED)	APPROVE BY	DATE	PART NO.	ITEM NO.
X.±.012(0.30)	FRANK	18/JUN/13	FWF20005-DXXS22W5B	FWF20005
X.±.008(0.20)	CHECKED BY	DATE	TITLE	
X.±.006(0.15)	JACOB	18/JUN/13	Wire to Board (Wafer)	
X.XX±.004(0.10)	DRAWN BY	DATE	Pitch 2.0mm 180° Vertical (DIP)	
X.XX±.05	CHEERY	18/JUN/13		

THIRD ANGLE PROJECTION	DESIGN UNITS	SCALE	SIZE
	Inch (metric)	5:1	A4

THIS DRAWING CONTAINS INFORMATION THAT IS PROPRIETARY TO TXGA INDUSTRIAL ELECTRONICS(SZ)CO.,LTD AND SHOULD NOT BE USED WITHOUT WRITTEN PERMISSION



REV	LOCATIONS	DESCRIPTION	DATE	REVISER	APPD

A

B

C

D

E

F

(n) Circuits	Part No.	Dimensions(in/mm)	
		A	B
4	FWF20005-D04S22W5B	.079(2.00)	.232(5.90)
6	FWF20005-D06S22W5B	.157(4.00)	.311(7.90)
8	FWF20005-D08S22W5B	.236(6.00)	.390(9.90)
10	FWF20005-D10S22W5B	.315(8.00)	.469(11.90)
12	FWF20005-D12S22W5B	.394(10.00)	.547(13.90)
14	FWF20005-D14S22W5B	.472(12.00)	.626(15.90)
16	FWF20005-D16S22W5B	.551(14.00)	.705(17.90)
18	FWF20005-D18S22W5B	.630(16.00)	.783(19.90)
20	FWF20005-D20S22W5B	.709(18.00)	.862(21.90)
22	FWF20005-D22S22W5B	.787(20.00)	.941(23.90)
(n) Circuits	Part No.	Dimensions(in/mm)	
		A	B
24	FWF20005-D24S22W5B	.866(22.00)	1.020(25.90)
26	FWF20005-D26S22W5B	.945(24.00)	1.098(27.90)
28	FWF20005-D28S22W5B	1.024(26.00)	1.177(29.90)
30	FWF20005-D30S22W5B	1.102(28.00)	1.256(31.90)
32	FWF20005-D32S22W5B	1.181(30.00)	1.335(33.90)
34	FWF20005-D34S22W5B	1.260(32.00)	1.413(35.90)
36	FWF20005-D36S22W5B	1.339(34.00)	1.492(37.90)
38	FWF20005-D38S22W5B	1.417(36.00)	1.571(39.90)
40	FWF20005-D40S22W5B	1.496(38.00)	1.650(41.90)

A


B

C

D

E

F

 THIRD ANGLE PROJECTION	DESIGN UNITS	X.±.008(0.20)	X.±.2'	JACOB	18/JUN/13	WIRE TO BOARD (VERTICAL (DIP)) Pitch 2.0mm 180° Vertical (DIP)	THIS DRAWING CONTAINS INFORMATION THAT IS PROPRIETARY TO TXGA INDUSTRIAL ELECTRONICS(SZ)CO.,LTD AND SHOULD NOT BE USED WITHOUT WRITTEN PERMISSION
	INCH (METRIC)	X.±.006(0.15)	.XX±.1'	DRAWN BY	DATE		
SCALE	SIZE	X.±.012(0.30)	X.±.5'	CHECKED BY	DATE	PART NO. FWF20005-DXXS22W5B ITEM NO. FWF20005	TITLE Wire to Board (Vertical (DIP))
5:1	A4	(UNLESS SPECIFIED)	FRANK	18/JUN/13	APPROVE BY		
GENERAL TOLERANCES		X.±.004(0.10)		CHERRY		SHEET NO. 1/1	
		.XXX±.004(0.10)		18/JUN/13		REV 0	
		.XXX±.05'				LEADER OF INDUSTRY	

8

7

6

5

4

3

2

1

8

7

6

5

4

3

2

1

## X-ON Electronics

Largest Supplier of Electrical and Electronic Components

*Click to view similar products for [Headers & Wire Housings](#) category:*

*Click to view products by [TXGA](#) manufacturer:*

Other Similar products are found below :

[95000-104TRLF](#) [10135584-644402LF](#) [DF62W-EP2022PCA](#) [95000-106TRLF](#) [DF62W-2022SCA](#) [DF62W-EP2022PC](#) [2203348](#) [DF62W-2022SC](#) [1084018](#) [1029039](#) [1084017](#) [802-10-012-10-002000](#) [1112640](#) [1112639](#) [891-007-9SS-BST1T](#) [000-34000](#) [0008550134](#) [0009482033](#) [0009507031](#) [57102-F02-18ULF](#) [57102-S06-03LF](#) [57202-S52-04LF](#) [PCN6-15S-2.5E](#) [0039019024](#) [58102-G61-06LF](#) [582553-1](#) [0009485154](#) [0009508121](#) [0022285053](#) [0050291907](#) [018731A](#) [LY20-4P-DT1-P1E-BR](#) [02.125.8002.8](#) [60101931](#) [60598-1 \(Cut Strip\)](#) [M1625-3R/100](#) [61062-3](#) [61082-181009](#) [CSU011177004](#) [636-1427](#) [638009-1](#) [641938-9](#) [641991-4](#) [644168-1](#) [644827-2](#) [647662-1](#) [65039-019ELF](#) [65692-001LF](#) [65781-018](#) [65781-047](#)