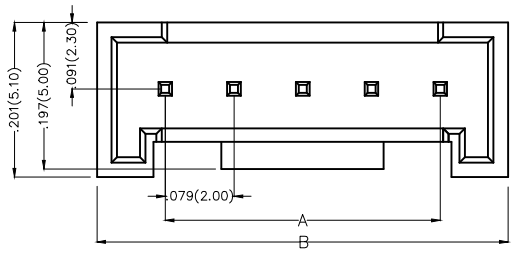
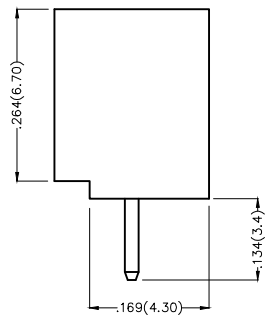
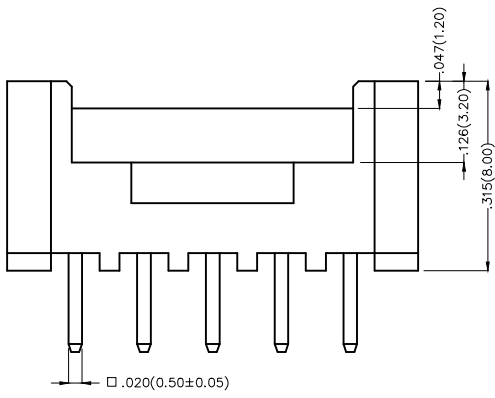


REV	LOCATIONS	DESCRIPTION	DATE	REVISER	APPD



Electrical  
 Current Rating: 2.0A AC(rms)/DC  
 Voltage Rating: 125V AC(rms)/DC  
 Contact Resistance: 20 mΩ Max  
 Insulation Resistance: 1000 MΩ MIN  
 Withstanding Voltage: 1000V AC r.m.s  
 Temperature Range—Operating: -25°C~+85°C

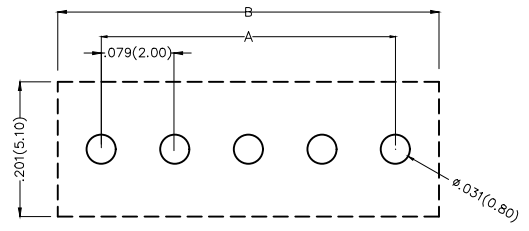
Material and Plating  
 Housing: PA66( UL 94V-2)  
 Contact Pin: Brass  
 Plating: Tin Plated



### Ordering Information

FWF 200 09 — S XX S 2 2 XX B  
 1 2 3 4 5 6 7 8 9 10

1 Category FWF—Wafer	2 Series Number 200—Pitch 2.0mm	3 Distinction No. 09	4 Row Option S—Single Row	5 Circuits XX	6 Entry Angle S—180° Vertical
7 Plating 2—Tin Plated	8 Material—Resin 2—PA66	9 Color—Resin W1—White W5—White	10 Packaging B—PE Bag		



Recommended P.C. Board Layout

 THIRD ANGLE PROJECTION	GENERAL TOLERANCES (UNLESS SPECIFIED)		APPROVE BY FRANK	DATE 18/JUN/13	PART NO. FWF20009—SXXS22XXB	ITEM NO. FWF20009	 Leader Of Industry
	X.±.012(0.30)	X.±5'	CHECKED BY JACOB	DATE 18/JUN/13	TITLE Wire to Board (Wafer) Pitch 2.0mm 180° Vertical (DIP)		
DESIGN UNITS Inch (metric)	X.X±.008(0.20)	.X'±2'	DRAWN BY CHERRY	DATE 18/JUN/13	THIS DRAWING CONTAINS INFORMATION THAT IS PROPRIETARY TO TXGA INDUSTRIAL ELECTRONICS(S.Z)CO.,LTD AND SHOULD NOT BE USED WITHOUT WRITTEN PERMISSION		
SCALE 5:1	SIZE A4	X.XX±.006(0.15)	.XX±1'	X.XXX±.004(0.10)	.XXX±0.5'		

1 2 3 4 5 6 7 8

REV	LOCATIONS	DESCRIPTION	DATE	REVISER	APPD

A

A

B

B

C

C

D

D



E

E

F

F

Circuits (n)	Part No.	Dimensions(in/mm)	
		A	B
2	FWF20009-S02S22XXB	.079(2.00)	.236(6.00)
3	FWF20009-S03S22XXB	.157(4.00)	.315(8.00)
4	FWF20009-S04S22XXB	.236(6.00)	.394(10.00)
5	FWF20009-S05S22XXB	.315(8.00)	.472(12.00)
6	FWF20009-S06S22XXB	.394(10.00)	.551(14.00)
7	FWF20009-S07S22XXB	.472(12.00)	.630(16.00)
8	FWF20009-S08S22XXB	.551(14.00)	.709(18.00)
9	FWF20009-S09S22XXB	.630(16.00)	.787(20.00)
10	FWF20009-S10S22XXB	.709(18.00)	.866(22.00)
11	FWF20009-S11S22XXB	.787(20.00)	.945(24.00)
12	FWF20009-S12S22XXB	.866(22.00)	1.024(26.00)

 THIRD ANGLE PROJECTION	GENERAL TOLERANCES (UNLESS SPECIFIED)		APPROVE BY	DATE	PART NO.	ITEM NO.	 Leader Of Industry
	X.±.012(0.30)	X.'±5'	FRANK	18/JUN/13	FWF20009-SXXS22XXB	FWF20009	
	X.X±.008(0.20)	.X'±2'	CHECKED BY	DATE	TITLE	REV 0	
DESIGN UNITS Inch (metric)	X.XX±.006(0.15)	.XX'±1'	JACOB	18/JUN/13	Wire to Board (Wafer) Pitch 2.0mm 180° Vertical (DIP)	THIS DRAWING CONTAINS INFORMATION THAT IS PROPRIETARY TO TXGA INDUSTRIAL ELECTRONICS(S.Z)CO.,LTD AND SHOULD NOT BE USED WITHOUT WRITTEN PERMISSION	
SCALE 5:1	SIZE A4	X.XXX±.004(0.10)	.XXX'±0.5'	DRAWN BY	DATE		
			CHERRY	18/JUN/13			

1 2 3 4 5 6 7 8

## X-ON Electronics

Largest Supplier of Electrical and Electronic Components

*Click to view similar products for [Headers & Wire Housings](#) category:*

*Click to view products by [TXGA](#) manufacturer:*

Other Similar products are found below :

[57102-F02-18ULF](#) [58102-G61-06LF](#) [0009485154](#) [009176003701906](#) [0050291907](#) [02.125.8002.8](#) [609-3404](#) [61062-3](#) [622-0430](#) [622-3653LF](#)  
[63453-116](#) [636-1030](#) [636-1427](#) [636-3427](#) [636-4007](#) [641938-9](#) [644827-2](#) [65495-038](#) [65692-001LF](#) [65781-018](#) [65781-047](#) [65817-010LF](#)  
[65817-015LF](#) [66207-023LF](#) [67016-026LF](#) [67095-007LF](#) [68631-112](#) [68645-018](#) [68648-049](#) [699319-000](#) [70.362.1628.0](#) [70-4210](#) [70-4226B](#)  
[70-4853B](#) [707-5020](#) [707-5028](#) [71.350.2428.0](#) [71961-016LF](#) [733-134](#) [754199-000](#) [760-3052](#) [787-8014-00](#) [FCN-367T-T012/H](#) [80.063.4001.1](#)  
[800-90-010-10-002000](#) [801-43-002-10-013000](#) [801-43-006-10-002000](#) [803-41-018-10-001000](#) [803-43-014-20-001000](#) [803-43-024-10-001000](#)