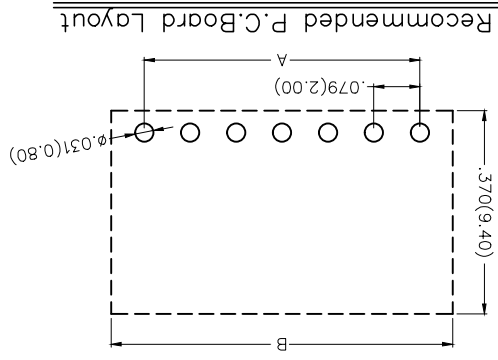
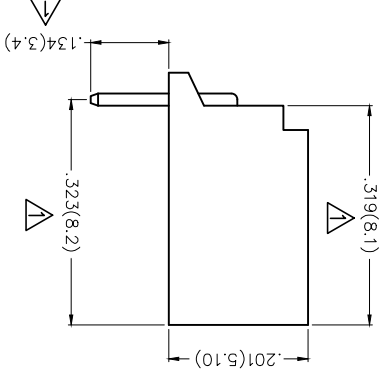
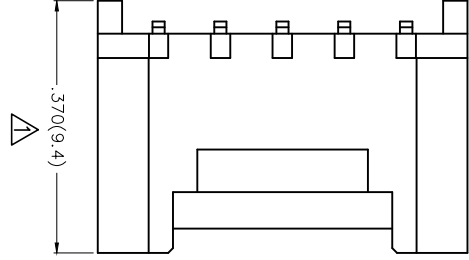
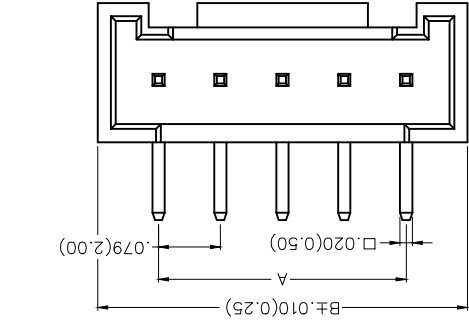


REV	LOCATIONS	DESCRIPTION	DATE	REVISER	APPD
1		Dimension: Change 9.25 into 9.4mm, Change 7.80 into 8.1mm, Change 7.95 into 8.2mm, Change 3.20 into 3.4mm.	17/OCT/18	KATE	FRANK

Electrical

Current Rating: 2.0A AC(rms)/DC
Voltage Rating: 125V AC(rms)/DC
Contact Resistance: 20 mΩ Max
Insulation Resistance: 1000 MΩ MIN
Withstanding Voltage: 1000V AC r.m.s.
Temperature Range—Operating: -25°C~+85°C
Material and Plating
Housing: PA66 (UL 94V-2)
Contact Pin: Brass
Plating: Tin Plated

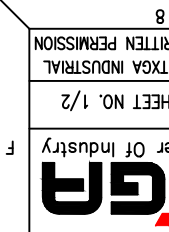


Recommended P.C.Board Layout


Ordering Information
FWF 200 10 — S XX B 2 2 W1 B
1 2 3 4 5 6 7 8 9 10

1	Category	FWF-Water	2	Series Number	200-Pitch 2.0mm	3	Distinction No.	10	4	Row Option	Single Row	5	Circuits	XX	6	Entry Angle	B-90° Angle
7	Plating	2-Tin Plated	8	Material-Resin	2-PA66	9	Color-Resin	W1-White	10	Packaging	B-PE Bag						

THIRD ANGLE		DESIGN UNITS		GENERAL TOLERANCES (UNLESS SPECIFIED)		DATE		PART NO.		TITLE		REV 1		SHEET NO. 1/2	
◎	THIRD ANGLE	X.±.012(0.30)	X.X±.008(0.20)	X.X±.006(0.15)	X.X±.0.5	18/JUN/13	FRANK	FWF20010-SXXB22WB	Wire to Board (Water)	Leader Of Industry	REV 1	SHEET NO. 1/2		THIS DRAWING CONTAINS INFORMATION THAT IS PROPRIETARY TO TXGA INDUSTRIAL ELECTRONICS(Z)CO.,LTD AND SHOULD NOT BE USED WITHOUT WRITTEN PERMISSION	
◎	THIRD ANGLE	X.±.012(0.30)	X.X±.008(0.20)	X.X±.006(0.15)	X.X±.0.5	18/JUN/13	FRANK	FWF20010-SXXB22WB	Wire to Board (Water)	Leader Of Industry	REV 1	SHEET NO. 1/2		THIS DRAWING CONTAINS INFORMATION THAT IS PROPRIETARY TO TXGA INDUSTRIAL ELECTRONICS(Z)CO.,LTD AND SHOULD NOT BE USED WITHOUT WRITTEN PERMISSION	



Circuits (n)	Part No.	Dimensions(in/mm)	
		A	B
2	FWF20010-S02B22W1B	.079(2.00)	.236(6.00)
3	FWF20010-S03B22W1B	.157(4.00)	.315(8.00)
4	FWF20010-S04B22W1B	.236(6.00)	.394(10.00)
5	FWF20010-S05B22W1B	.315(8.00)	.472(12.00)
6	FWF20010-S06B22W1B	.394(10.00)	.551(14.00)
7	FWF20010-S07B22W1B	.472(12.00)	.630(16.00)
8	FWF20010-S08B22W1B	.551(14.00)	.709(18.00)
9	FWF20010-S09B22W1B	.630(16.00)	.787(20.00)
10	FWF20010-S10B22W1B	.709(18.00)	.866(22.00)
11	FWF20010-S11B22W1B	.787(20.00)	.945(24.00)
12	FWF20010-S12B22W1B	.866(22.00)	1.024(26.00)

THIRD ANGLE PROJECTION 	DESIGN UNITS Inch (metric)	X.±.012(0.30)	X.±5	CHECKED BY FRANK	DATE 18/JUN/13	PART NO. FWF20010-SXXB22W1B	ITEM NO. FWF20010
	SCALE SIZE 5:1 A4	X.XX±.006(0.15)	X.X±1	DRAWN BY CHERRY	DATE 18/JUN/13	TITLE Wire to Board (Water) Pitch 2.0mm 90° Angle (DIP)	REV 1
GENERAL TOLERANCES (UNLESS SPECIFIED)		X.±.012(0.30)	X.±5	APPROVE BY FRANK	DATE 18/JUN/13	THIS DRAWING CONTAINS INFORMATION THAT IS PROPRIETARY TO TXGA INDUSTRIAL ELECTRONICS(S)Z)CO.,LTD AND SHOULD NOT BE USED WITHOUT WRITTEN PERMISSION	

REV	LOCATIONS	DESCRIPTION	DATE	REVISER	APPD

A B C D E F
 1 2 3 4 5 6 7 8



X-ON Electronics

Largest Supplier of Electrical and Electronic Components

Click to view similar products for [Headers & Wire Housings](#) category:

Click to view products by [TXGA](#) manufacturer:

Other Similar products are found below :

[95000-104TRLF](#) [10135584-644402LF](#) [DF62W-EP2022PCA](#) [95000-106TRLF](#) [DF62W-2022SCA](#) [DF62W-EP2022PC](#) [2203348](#) [DF62W-2022SC](#) [1084018](#) [1029039](#) [1084017](#) [802-10-012-10-002000](#) [1112640](#) [1112639](#) [891-007-9SS-BST1T](#) [000-34000](#) [0008550134](#) [0009482033](#) [0009507031](#) [57102-F02-18ULF](#) [57102-S06-03LF](#) [57202-S52-04LF](#) [PCN6-15S-2.5E](#) [0039019024](#) [58102-G61-06LF](#) [582553-1](#) [0009485154](#) [0009508121](#) [0022285053](#) [0050291907](#) [018731A](#) [LY20-4P-DT1-P1E-BR](#) [02.125.8002.8](#) [60101931](#) [60598-1 \(Cut Strip\)](#) [M1625-3R/100](#) [61062-3](#) [61082-181009](#) [CSU011177004](#) [636-1427](#) [638009-1](#) [641938-9](#) [641991-4](#) [644168-1](#) [644827-2](#) [647662-1](#) [65039-019ELF](#) [65692-001LF](#) [65781-018](#) [65781-047](#)