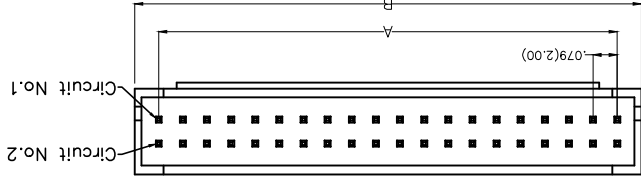
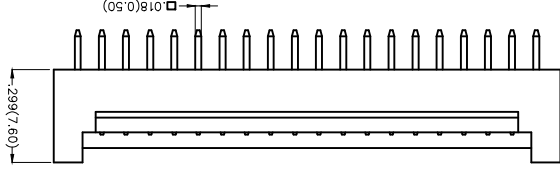
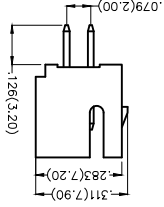


REV	LOCATIONS	DESCRIPTION	DATE	REVISER	APPD

Electrical
 Current Rating: 3.0A AC(rms)/DC
 Voltage Rating: 250V AC(rms)/DC
 Contact Resistance: 50 mΩ Max
 Insulation Resistance: 1000 MΩ MIN
 Withstanding Voltage: 1000V AC r.m.s
 Temperature Range-Operating: -25°C~+85°C
 Material and Plating
 Housing: PA46 UL 94V-0)
 Contact Pin: Brass
 Plating: Tin Plated



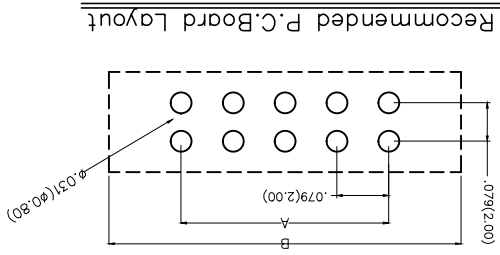
1	Category	FWF-Water
2	Series Number	200-Pitch 2.0mm
3	Distinction No.	12
4	Row Option	Double Row
5	Circuits	XX
6	Entry Angle	S-180° Vertical
7	Plating	2-Tin Plated
8	Material-Resin	2-PA46
9	Color-Resin	W5-White K6-Black
10	Packaging	B-PE Bag

Ordering Information
 FWF 200 12 - D XX S 2 2 XX B
 1 2 3 4 5 6 7 8 9 10

APPROVE BY	FRANK	DATE	18/JUN/13	PART NO.	FWF20012	ITEM NO.	FWF20012
CHECKED BY	JACOB	DATE	18/JUN/13	TITLE	Wire to Board (Water) Pitch 2.0mm 180° Vertical (DIP)		
DRAWN BY	CHERRY	DATE	18/JUN/13	THIS DRAWING CONTAINS INFORMATION THAT IS PROPRIETARY TO TXGA INDUSTRIAL ELECTRONICS(SZ)CO.,LTD AND SHOULD NOT BE USED WITHOUT WRITTEN PERMISSION			
SCALE	5:1	SIZE	A4	GENERAL TOLERANCES (UNLESS SPECIFIED)	THIRD ANGLE PROJECTION		
DESIGN UNITS	Inch (metric)	X.XX±.008(0.20)	X.XX±.006(0.15)	X.XX±.004(0.10)	X.XX±.05	X.XX±.004(0.10)	




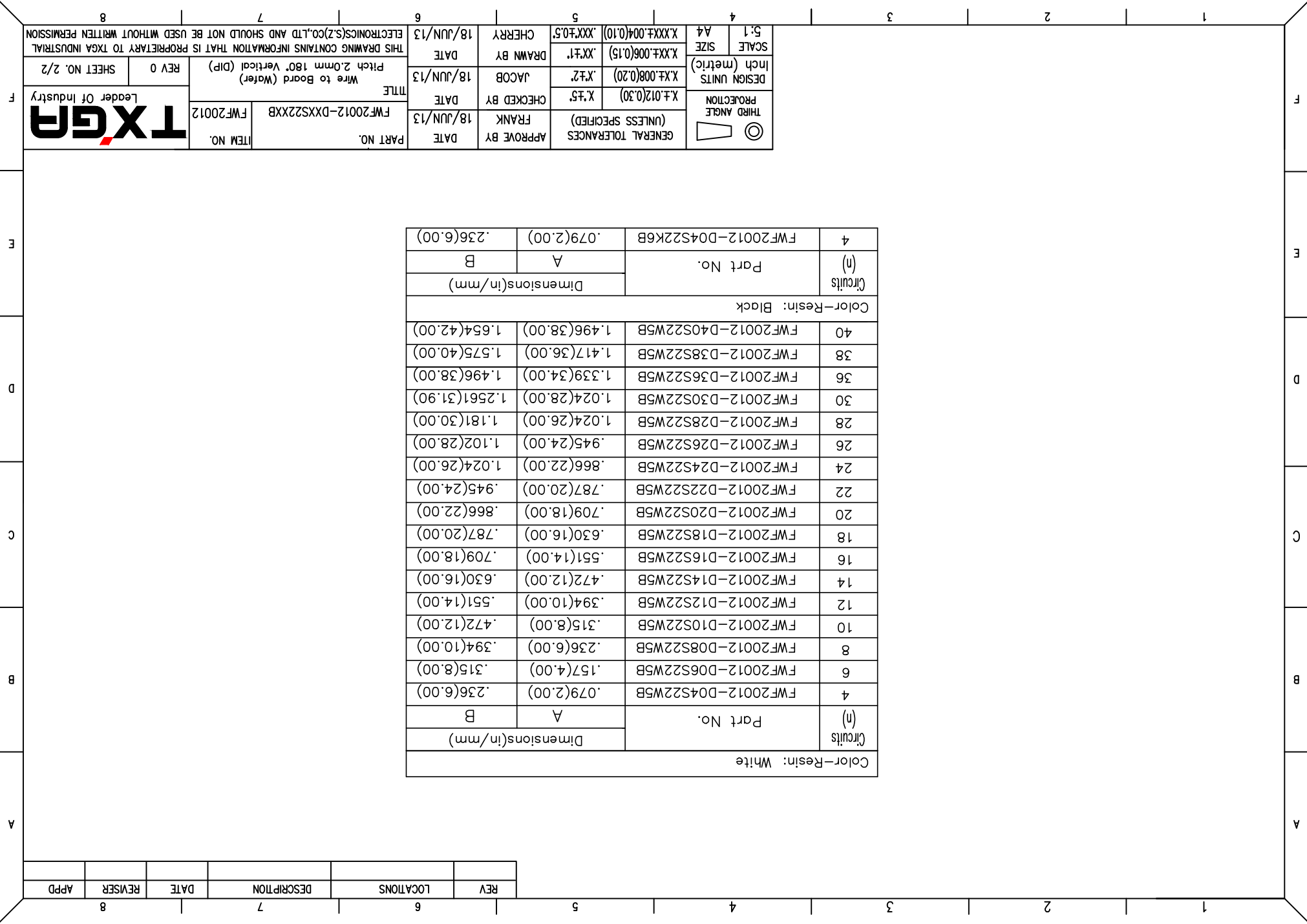
SCALE	5:1	SIZE	A4	GENERAL TOLERANCES (UNLESS SPECIFIED)	THIRD ANGLE PROJECTION		
DESIGN UNITS	Inch (metric)	X.XX±.008(0.20)	X.XX±.006(0.15)	X.XX±.004(0.10)	X.XX±.05	X.XX±.004(0.10)	
DRAWN BY	CHERRY	DATE	18/JUN/13	TITLE	Wire to Board (Water) Pitch 2.0mm 180° Vertical (DIP)		
CHECKED BY	JACOB	DATE	18/JUN/13	THIS DRAWING CONTAINS INFORMATION THAT IS PROPRIETARY TO TXGA INDUSTRIAL ELECTRONICS(SZ)CO.,LTD AND SHOULD NOT BE USED WITHOUT WRITTEN PERMISSION			



REV	LOCATIONS	DESCRIPTION	DATE	REVISER	APPD

Circuits (n)		Part No.		Dimensions(in/mm)	
Color-Resin: White					
4	FWF20012-D04S22W5B	.079(2.00)	.236(6.00)	A	B
6	FWF20012-D06S22W5B	.157(4.00)	.315(8.00)	A	B
8	FWF20012-D08S22W5B	.236(6.00)	.394(10.00)	A	B
10	FWF20012-D10S22W5B	.315(8.00)	.472(12.00)	A	B
12	FWF20012-D12S22W5B	.394(10.00)	.551(14.00)	A	B
14	FWF20012-D14S22W5B	.472(12.00)	.630(16.00)	A	B
16	FWF20012-D16S22W5B	.551(14.00)	.709(18.00)	A	B
18	FWF20012-D18S22W5B	.630(16.00)	.787(20.00)	A	B
20	FWF20012-D20S22W5B	.709(18.00)	.866(22.00)	A	B
22	FWF20012-D22S22W5B	.787(20.00)	.945(24.00)	A	B
24	FWF20012-D24S22W5B	.866(22.00)	1.024(26.00)	A	B
26	FWF20012-D26S22W5B	.945(24.00)	1.102(28.00)	A	B
28	FWF20012-D28S22W5B	1.024(26.00)	1.181(30.00)	A	B
30	FWF20012-D30S22W5B	1.024(28.00)	1.2561(31.90)	A	B
36	FWF20012-D36S22W5B	1.339(34.00)	1.496(38.00)	A	B
38	FWF20012-D38S22W5B	1.417(36.00)	1.575(40.00)	A	B
40	FWF20012-D40S22W5B	1.496(38.00)	1.654(42.00)	A	B
Color-Resin: Black					
Circuits (n)		Part No.		Dimensions(in/mm)	
4	FWF20012-D04S22K6B	.079(2.00)	.236(6.00)	A	B

 THIRD ANGLE PROJECTION		GENERAL TOLERANCES (UNLESS SPECIFIED) APPROVE BY: FRANK DATE: 18/JUN/13	CHECKED BY: JACOB DATE: 18/JUN/13	DRAWN BY: CHERRY DATE: 18/JUN/13	PART NO. FWF20012-DXXS22XXB ITEM NO. FWF20012	TITLE Wire to Board (Water) Pitch 2.0mm 180° Vertical (DIP)	REV 0 SHEET NO. 2/2	THIS DRAWING CONTAINS INFORMATION THAT IS PROPRIETARY TO TXGA INDUSTRIAL ELECTRONICS(SZ)CO.,LTD AND SHOULD NOT BE USED WITHOUT WRITTEN PERMISSION
DESIGN UNITS	Inch (metric)	X.±.008(0.20)	X.±.2	X.±.1	X.±.006(0.15)	X.±.004(0.10)	X.±.004(0.10)	X.±.004(0.10)
SCALE	SIZE	5:1	A4	A4	X.±.004(0.10)	X.±.004(0.10)	X.±.004(0.10)	X.±.004(0.10)



X-ON Electronics

Largest Supplier of Electrical and Electronic Components

Click to view similar products for [Headers & Wire Housings](#) category:

Click to view products by [TXGA](#) manufacturer:

Other Similar products are found below :

[95000-104TRLF](#) [10135584-644402LF](#) [DF62W-EP2022PCA](#) [95000-106TRLF](#) [DF62W-2022SCA](#) [DF62W-EP2022PC](#) [2203348](#) [DF62W-2022SC](#) [1084018](#) [1029039](#) [1084017](#) [802-10-012-10-002000](#) [1112640](#) [1112639](#) [891-007-9SS-BST1T](#) [000-34000](#) [0008550134](#) [0009482033](#) [0009507031](#) [57102-F02-18ULF](#) [57102-S06-03LF](#) [57202-S52-04LF](#) [PCN6-15S-2.5E](#) [0039019024](#) [58102-G61-06LF](#) [582553-1](#) [0009485154](#) [0009508121](#) [0022285053](#) [0050291907](#) [018731A](#) [LY20-4P-DT1-P1E-BR](#) [02.125.8002.8](#) [60101931](#) [60598-1 \(Cut Strip\)](#) [M1625-3R/100](#) [61062-3](#) [61082-181009](#) [CSU011177004](#) [636-1427](#) [638009-1](#) [641938-9](#) [641991-4](#) [644168-1](#) [644827-2](#) [647662-1](#) [65039-019ELF](#) [65692-001LF](#) [65781-018](#) [65781-047](#)