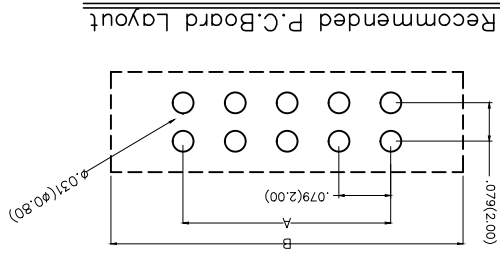
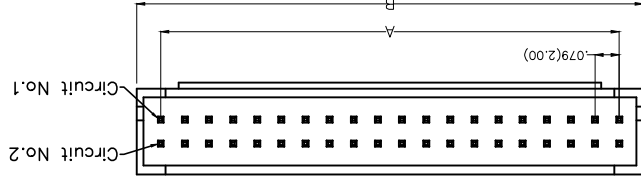
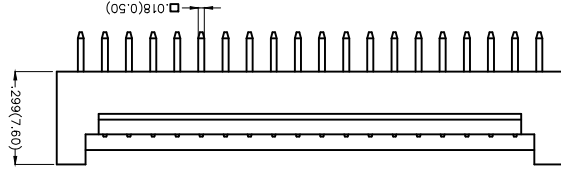
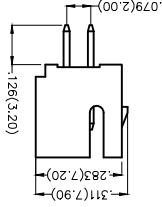


REV	LOCATIONS	DESCRIPTION	DATE	REVISER	APPD

Electrical
 Current Rating: 3.0A AC(rms)/DC
 Voltage Rating: 250V AC(rms)/DC
 Contact Resistance: 50 m Ω Max
 Insulation Resistance: 1000 M Ω MIN
 Withstanding Voltage: 1000V AC r.m.s
 Temperature Range-Operating: -25°C~+85°C
 Material and Plating
 Housing: PA46 UL 94V-0)
 Contact Pin: Brass
 Plating: Tin Plated



1	Category	FWF-Water
2	Series Number	200-Pitch 2.0mm
3	Distinction No.	12
4	Row Option	Double Row
5	Circuits	XX
6	Entry Angle	S-180° Vertical
7	Plating	2-Tin Plated
8	Material-Resin	2-PA46
9	Color-Resin	W5-White K6-Black
10	Packaging	B-PE Bag

Ordering Information
 FWF 200 12 - D XX S 2 2 XX B
 1 2 3 4 5 6 7 8 9 10


THIRD ANGLE PROJECTION	DESIGN UNITS Inch (metric)	SCALE 5:1 A4	GENERAL TOLERANCES (UNLESS SPECIFIED)	DATE 18/JUN/13	APPROVE BY FRANK	DATE 18/JUN/13	ITEM NO.	DATE 18/JUN/13	DRAWN BY JACOB	DATE 18/JUN/13	THIS DRAWING CONTAINS INFORMATION THAT IS PROPRIETARY TO TXGA INDUSTRIAL ELECTRONICS(SZ)CO.,LTD AND SHOULD NOT BE USED WITHOUT WRITTEN PERMISSION
X \pm 0.12(0.30)	X \pm 0.08(0.20)	X \pm 0.06(0.15)	X \pm 0.1	X \pm 0.5	CHECKED BY	DATE	FWF20012	DATE	DRAWN BY	DATE	THIS DRAWING CONTAINS INFORMATION THAT IS PROPRIETARY TO TXGA INDUSTRIAL ELECTRONICS(SZ)CO.,LTD AND SHOULD NOT BE USED WITHOUT WRITTEN PERMISSION
					FRANK	18/JUN/13	FWF20012-DXXS22XXB	18/JUN/13	JACOB	18/JUN/13	THIS DRAWING CONTAINS INFORMATION THAT IS PROPRIETARY TO TXGA INDUSTRIAL ELECTRONICS(SZ)CO.,LTD AND SHOULD NOT BE USED WITHOUT WRITTEN PERMISSION
											THIS DRAWING CONTAINS INFORMATION THAT IS PROPRIETARY TO TXGA INDUSTRIAL ELECTRONICS(SZ)CO.,LTD AND SHOULD NOT BE USED WITHOUT WRITTEN PERMISSION

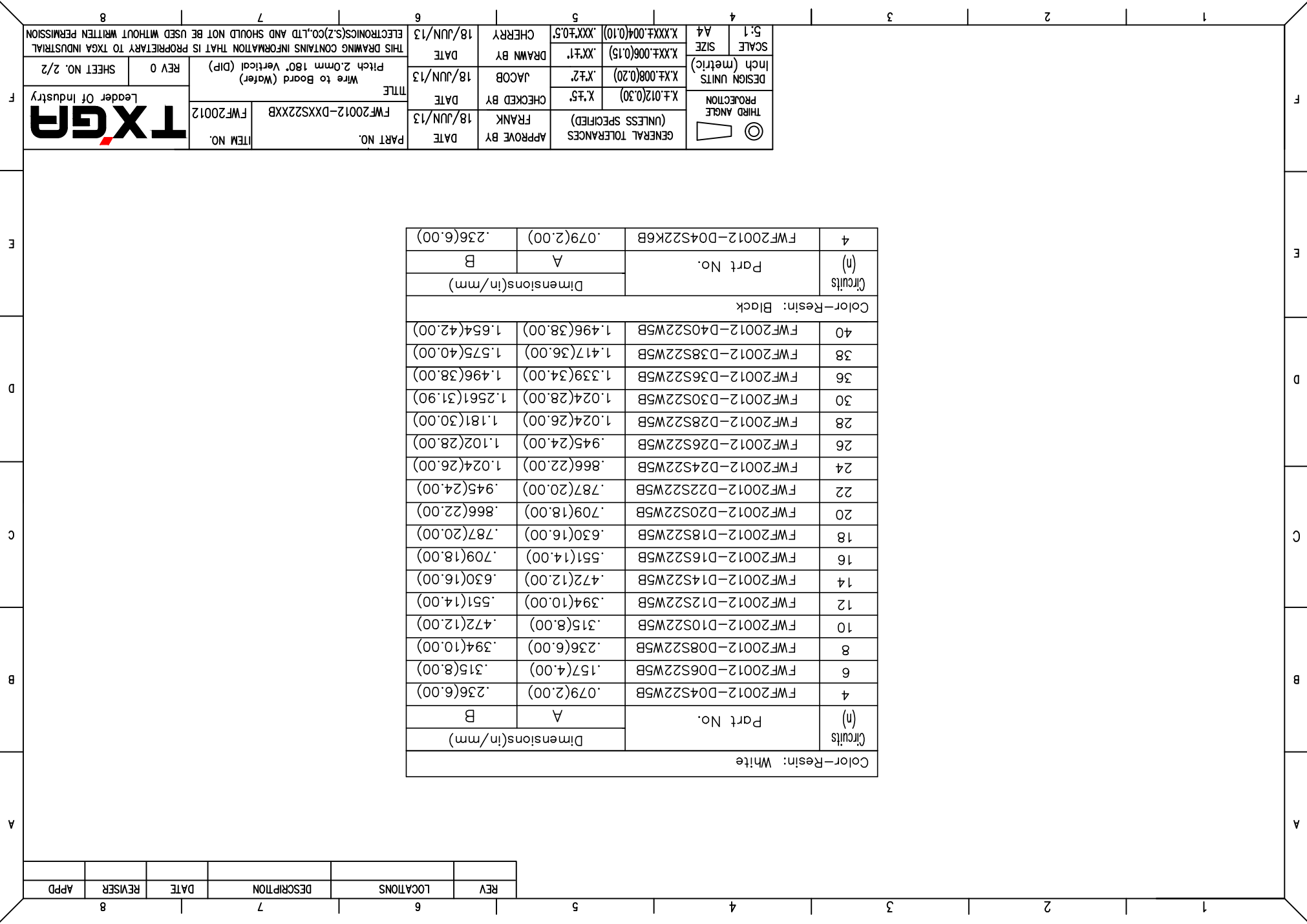
TXGA
 Leader Of Industry

REV 0 SHEET NO. 1/2

REV	LOCATIONS	DESCRIPTION	DATE	REVISER	APPD

Color-Resin: White		Dimensions(in/mm)		Part No.	Circuits (n)
	A	B		FWF20012-D04S22W5B	4
				FWF20012-D06S22W5B	6
				FWF20012-D08S22W5B	8
				FWF20012-D10S22W5B	10
				FWF20012-D12S22W5B	12
				FWF20012-D14S22W5B	14
				FWF20012-D16S22W5B	16
				FWF20012-D18S22W5B	18
				FWF20012-D20S22W5B	20
				FWF20012-D22S22W5B	22
				FWF20012-D24S22W5B	24
				FWF20012-D26S22W5B	26
				FWF20012-D28S22W5B	28
				FWF20012-D30S22W5B	30
				FWF20012-D36S22W5B	36
				FWF20012-D38S22W5B	38
				FWF20012-D40S22W5B	40
Color-Resin: Black		Dimensions(in/mm)		Part No.	Circuits (n)
	A	B		FWF20012-D04S22K6B	4
				FWF20012-D06S22K6B	6
				FWF20012-D08S22K6B	8
				FWF20012-D10S22K6B	10
				FWF20012-D12S22K6B	12
				FWF20012-D14S22K6B	14
				FWF20012-D16S22K6B	16
				FWF20012-D18S22K6B	18
				FWF20012-D20S22K6B	20
				FWF20012-D22S22K6B	22
				FWF20012-D24S22K6B	24
				FWF20012-D26S22K6B	26
				FWF20012-D28S22K6B	28
				FWF20012-D30S22K6B	30
				FWF20012-D36S22K6B	36
				FWF20012-D38S22K6B	38
				FWF20012-D40S22K6B	40

 THIRD ANGLE PROJECTION		GENERAL TOLERANCES (UNLESS SPECIFIED) APPROVE BY: FRANK DATE: 18/JUN/13	CHECKED BY: JACOB DATE: 18/JUN/13	DRAWN BY: CHERRY DATE: 18/JUN/13	PART NO. FWF20012-DXXS22XXB ITEM NO. FWF20012	TITLE Wire to Board (Water) Pitch 2.0mm 180° Vertical (DIP)	REV 0 SHEET NO. 2/2	THIS DRAWING CONTAINS INFORMATION THAT IS PROPRIETARY TO TXGA INDUSTRIAL ELECTRONICS(Z)CO.,LTD AND SHOULD NOT BE USED WITHOUT WRITTEN PERMISSION
SCALE	5:1							
SIZE	A4							
DESIGN UNITS	Inch (metric)	X.±.012(0.30)	X.±.5	X.±.2				
		X.±.008(0.20)	X.±.1	X.±.1				
		X.±.006(0.15)	X.±.1	X.±.1				
		X.±.004(0.10)	X.±.05	X.±.05				



X-ON Electronics

Largest Supplier of Electrical and Electronic Components

Click to view similar products for [Headers & Wire Housings](#) category:

Click to view products by [TXGA](#) manufacturer:

Other Similar products are found below :

[95000-104TRLF](#) [10135584-644402LF](#) [DF62W-EP2022PCA](#) [95000-106TRLF](#) [DF62W-2022SCA](#) [DF62W-EP2022PC](#) [2203348](#) [DF62W-2022SC](#) [1084018](#) [1029039](#) [1084017](#) [802-10-012-10-002000](#) [1112640](#) [1112639](#) [891-007-9SS-BST1T](#) [000-34000](#) [0008550134](#) [0009482033](#) [0009507031](#) [57102-F02-18ULF](#) [57102-S06-03LF](#) [57202-S52-04LF](#) [PCN6-15S-2.5E](#) [0039019024](#) [58102-G61-06LF](#) [582553-1](#) [0009485154](#) [0009508121](#) [0022285053](#) [0050291907](#) [018731A](#) [LY20-4P-DT1-P1E-BR](#) [02.125.8002.8](#) [60101931](#) [60598-1 \(Cut Strip\)](#) [M1625-3R/100](#) [61062-3](#) [61082-181009](#) [CSU011177004](#) [636-1427](#) [638009-1](#) [641938-9](#) [641991-4](#) [644168-1](#) [644827-2](#) [647662-1](#) [65039-019ELF](#) [65692-001LF](#) [65781-018](#) [65781-047](#)