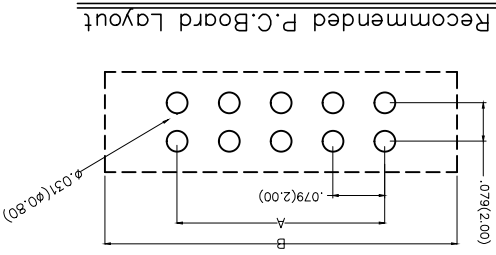
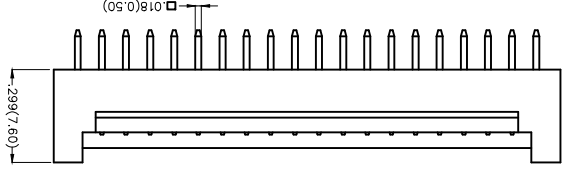
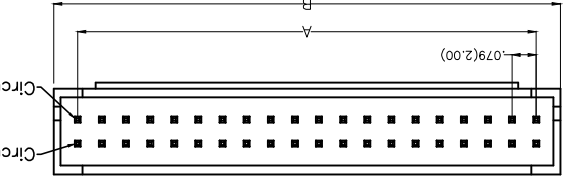
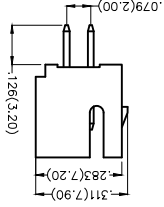


REV	LOCATIONS	DESCRIPTION	DATE	REVISER	APPD

Electrical
 Current Rating: 3.0A AC(rms)/DC
 Voltage Rating: 250V AC(rms)/DC
 Contact Resistance: 50 m Ω Max
 Insulation Resistance: 1000 M Ω MIN
 Withstanding Voltage: 1000V AC r.m.s
 Temperature Range-Operating: -25 $^{\circ}$ C~+85 $^{\circ}$ C
 Material and Plating
 Housing: PA46 UL 94V-0)
 Contact Pin: Brass
 Plating: Tin Plated



1	Category	FWF-Water
2	Series Number	200-Pitch 2.0mm
3	Distinction No.	12
4	Row Option	Double Row
5	Circuits	XX
6	Entry Angle	S-180 $^{\circ}$ Vertical
7	Plating	2-Tin Plated
8	Material-Resin	2-PA46
9	Color-Resin	W5-White K6-Black
10	Packaging	B-PE Bag


Ordering Information
 FWF 200 12 - D XX S 2 2 XX B
 1 2 3 4 5 6 7 8 9 10

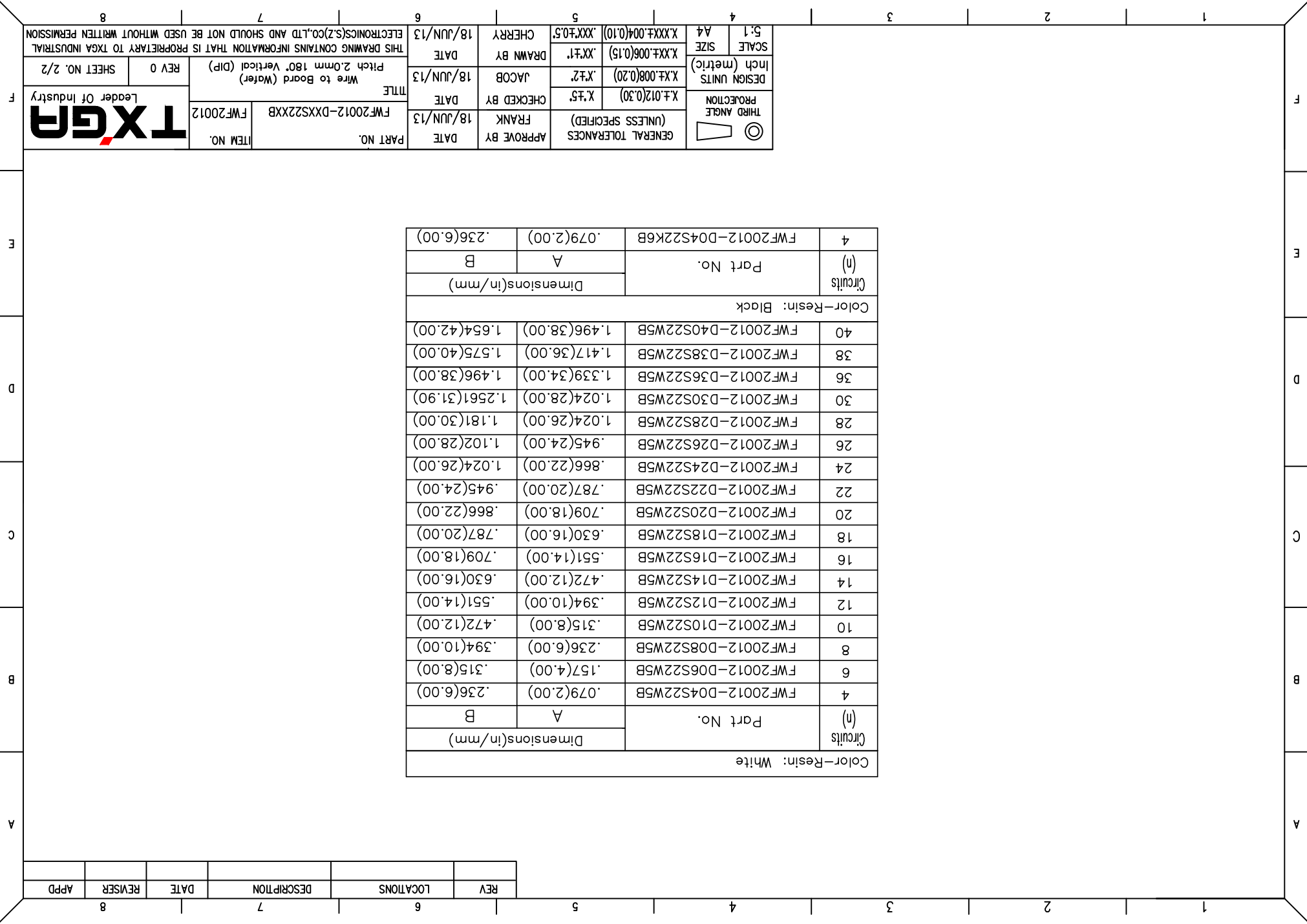
THIRD ANGLE PROJECTION	DESIGN UNITS Inch (metric)	SCALE 5:1 A4	GENERAL TOLERANCES (UNLESS SPECIFIED)	DATE 18/JUN/13	APPROVE BY FRANK	DATE 18/JUN/13	ITEM NO.
	X.±.008(0.20) X.±.006(0.15) X.XX±.004(0.10)	X.±.012(0.30) X.±.010(0.25) X.XX±.004(0.10)	X.±.012(0.30) X.±.010(0.25) X.XX±.004(0.10)	CHECKED BY JACOB	DRAWN BY CHERRY	DATE 18/JUN/13	PART NO.
							FWF20012-DXXS22XXB
							FWF20012
							Wire to Board (Water) Pitch 2.0mm 180 $^{\circ}$ Vertical (DIP)
							REV 0 SHEET NO. 1/2
							THIS DRAWING CONTAINS INFORMATION THAT IS PROPRIETARY TO TXGA INDUSTRIAL ELECTRONICS(SZ)CO.,LTD AND SHOULD NOT BE USED WITHOUT WRITTEN PERMISSION



REV	LOCATIONS	DESCRIPTION	DATE	REVISER	APPD

Color-Resin: White		Dimensions(in/mm)		Part No.	Circuits (n)
		A	B	FWF20012-D04S22W5B	4
				FWF20012-D06S22W5B	6
				FWF20012-D08S22W5B	8
				FWF20012-D10S22W5B	10
				FWF20012-D12S22W5B	12
				FWF20012-D14S22W5B	14
				FWF20012-D16S22W5B	16
				FWF20012-D18S22W5B	18
				FWF20012-D20S22W5B	20
				FWF20012-D22S22W5B	22
				FWF20012-D24S22W5B	24
				FWF20012-D26S22W5B	26
				FWF20012-D28S22W5B	28
				FWF20012-D30S22W5B	30
				FWF20012-D36S22W5B	36
				FWF20012-D38S22W5B	38
				FWF20012-D40S22W5B	40
Color-Resin: Black		Dimensions(in/mm)		Part No.	Circuits (n)
		A	B	FWF20012-D04S22K6B	4
				FWF20012-D06S22K6B	6
				FWF20012-D08S22K6B	8
				FWF20012-D10S22K6B	10
				FWF20012-D12S22K6B	12
				FWF20012-D14S22K6B	14
				FWF20012-D16S22K6B	16
				FWF20012-D18S22K6B	18
				FWF20012-D20S22K6B	20
				FWF20012-D22S22K6B	22
				FWF20012-D24S22K6B	24
				FWF20012-D26S22K6B	26
				FWF20012-D28S22K6B	28
				FWF20012-D30S22K6B	30
				FWF20012-D36S22K6B	36
				FWF20012-D38S22K6B	38
				FWF20012-D40S22K6B	40

 THIRD ANGLE PROJECTION		GENERAL TOLERANCES (UNLESS SPECIFIED) APPROVE BY: FRANK DATE: 18/JUN/13	CHECKED BY: JACOB DATE: 18/JUN/13	DRAWN BY: CHERRY DATE: 18/JUN/13	PART NO. FWF20012-DXXS22XXB ITEM NO. FWF20012	TITLE Wire to Board (Water) Pitch 2.0mm 180° Vertical (DIP)	REV 0 SHEET NO. 2/2	THIS DRAWING CONTAINS INFORMATION THAT IS PROPRIETARY TO TXGA INDUSTRIAL ELECTRONICS(Z)CO.,LTD AND SHOULD NOT BE USED WITHOUT WRITTEN PERMISSION
DESIGN UNITS	X.±.008(0.20)	X.±.2	X.±.1	X.±.006(0.15)	X.±.004(0.10)	X.±.004(0.10)	X.±.004(0.10)	X.±.004(0.10)
Inch (metric)								
SCALE	5:1	A4	A4	A4	A4	A4	A4	A4



X-ON Electronics

Largest Supplier of Electrical and Electronic Components

Click to view similar products for [Headers & Wire Housings](#) category:

Click to view products by [TXGA](#) manufacturer:

Other Similar products are found below :

[95000-104TRLF](#) [10135584-644402LF](#) [DF62W-EP2022PCA](#) [95000-106TRLF](#) [DF62W-2022SCA](#) [DF62W-EP2022PC](#) [2203348](#) [DF62W-2022SC](#) [1084018](#) [1029039](#) [1084017](#) [802-10-012-10-002000](#) [1112640](#) [1112639](#) [891-007-9SS-BST1T](#) [000-34000](#) [0008550134](#) [0009482033](#) [0009507031](#) [57102-F02-18ULF](#) [57102-S06-03LF](#) [57202-S52-04LF](#) [PCN6-15S-2.5E](#) [0039019024](#) [58102-G61-06LF](#) [582553-1](#) [0009485154](#) [0009508121](#) [0022285053](#) [0050291907](#) [018731A](#) [LY20-4P-DT1-P1E-BR](#) [02.125.8002.8](#) [60101931](#) [60598-1 \(Cut Strip\)](#) [M1625-3R/100](#) [61062-3](#) [61082-181009](#) [CSU011177004](#) [636-1427](#) [638009-1](#) [641938-9](#) [641991-4](#) [644168-1](#) [644827-2](#) [647662-1](#) [65039-019ELF](#) [65692-001LF](#) [65781-018](#) [65781-047](#)