

REV	LOCATIONS	DESCRIPTION	DATE	REVISER	APPD

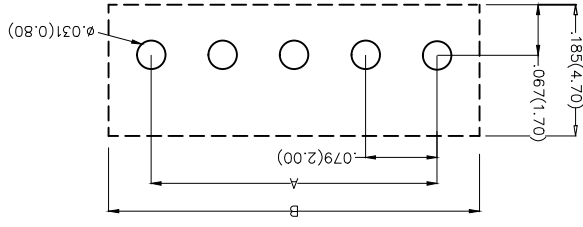
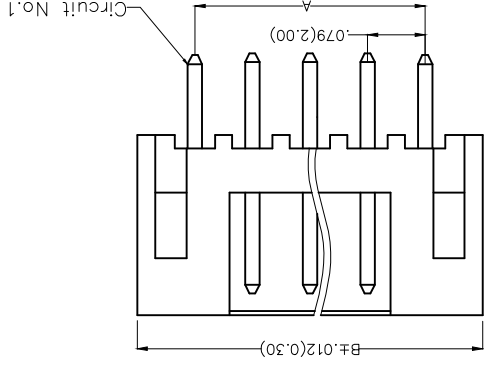
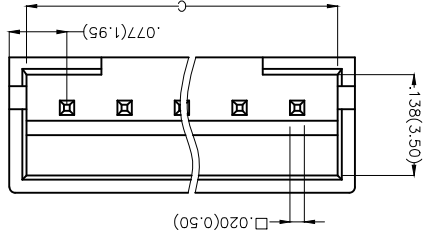
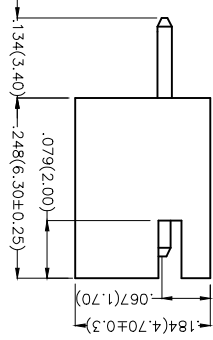
Electrical

Current Rating: 2.0A AC(rms)/DC
Voltage Rating: 100V AC(rms)/DC
Contact Resistance: 10 mΩ Max
Insulation Resistance: 1000 MΩ MIN
Withstanding Voltage: 800V AC r.m.s
Temperature Range—Operating: -25°C~+85°C
Material and Plating
Housing: P466 (UL 94V-2)
Contact Pin: Brass
Plating: Full gold/ Full tin

Ordering Information

1	Category	FWF—Water
2	Series Number	200—Pitch 2.0mm
3	Distinction No.	15
4	Row Option	S—Single Row
5	Circuits	XX
6	Entry Angle	S—180° Vertical
7	Plating	1—Gold Plated 2—Tin Plated
8	Material—Resin	2—PA66
9	Color—Resin	W1—White
10	Packaging	B—PE Bag

1	Category	FWF—Water
2	Series Number	200—Pitch 2.0mm
3	Distinction No.	15
4	Row Option	S—Single Row
5	Circuits	XX
6	Entry Angle	S—180° Vertical
7	Plating	1—Gold Plated 2—Tin Plated
8	Material—Resin	2—PA66
9	Color—Resin	W1—White
10	Packaging	B—PE Bag



THIRD ANGLE PROJECTION	DESIGN UNITS	Inch (metric)	
	SCALE	5:1	A4
GENERAL TOLERANCES (UNLESS SPECIFIED)	DATE	18/JUN/13	FRANK
	CHECKED BY	JACOB	JACOB
DATE	18/JUN/13	DATE	18/JUN/13
PART NO.	FWF20015-SXXSX2WB		
ITEM NO.	FWF20015		
TITLE	Wire to Board (Water)		
REV 0	SHEET NO. 1/1		
THIS DRAWING CONTAINS INFORMATION THAT IS PROPRIETARY TO TXGA INDUSTRIAL ELECTRONICS(Z)CO.,LTD AND SHOULD NOT BE USED WITHOUT WRITTEN PERMISSION			

Leader Of Industry

TXGA

REV	LOCATIONS	DESCRIPTION	DATE	REVISER	APPD

8 7 6 5 4 3 2 1

Circuits	Part No.	Dimensions(in/mm)			Circuits	Part No.	Dimensions(in/mm)		
		A	B	C			A	B	C
Material and Plating : Housing P466 UL94V-2 , Tin-Plated all .									
2	FWF20015-S02S22W1B	.079(2.00)	.232(5.90)	.197(5.00)	2	FWF20015-S02S12W1B	.079(2.00)	.232(5.90)	.197(5.00)
3	FWF20015-S03S22W1B	.157(4.00)	.311(7.90)	.157(7.00)	3	FWF20015-S03S12W1B	.157(4.00)	.311(7.90)	.157(7.00)
4	FWF20015-S04S22W1B	.236(6.00)	.390(9.90)	.354(9.00)	4	FWF20015-S04S12W1B	.236(6.00)	.390(9.90)	.354(9.00)
5	FWF20015-S05S22W1B	.315(8.00)	.469(11.90)	.433(11.00)	5	FWF20015-S05S12W1B	.315(8.00)	.469(11.90)	.433(11.00)
6	FWF20015-S06S22W1B	.394(10.00)	.547(13.90)	.512(13.00)	6	FWF20015-S06S12W1B	.394(10.00)	.547(13.90)	.512(13.00)
7	FWF20015-S07S22W1B	.472(12.00)	.626(15.90)	.591(15.00)	7	FWF20015-S07S12W1B	.472(12.00)	.626(15.90)	.591(15.00)
8	FWF20015-S08S22W1B	.551(14.00)	.705(17.90)	.670(17.00)	8	FWF20015-S08S12W1B	.551(14.00)	.705(17.90)	.670(17.00)
9	FWF20015-S09S22W1B	.630(16.00)	.783(19.90)	.748(19.00)	9	FWF20015-S09S12W1B	.630(16.00)	.783(19.90)	.748(19.00)
10	FWF20015-S10S22W1B	.709(18.00)	.862(21.90)	.827(21.00)	10	FWF20015-S10S12W1B	.709(18.00)	.862(21.90)	.827(21.00)
11	FWF20015-S11S22W1B	.787(20.00)	.941(23.90)	.906(23.00)	11	FWF20015-S11S12W1B	.787(20.00)	.941(23.90)	.906(23.00)
12	FWF20015-S12S22W1B	.866(22.00)	1.020(25.90)	.984(25.00)	12	FWF20015-S12S12W1B	.866(22.00)	1.020(25.90)	.984(25.00)
13	FWF20015-S13S22W1B	.945(24.00)	1.098(27.90)	1.063(27.00)	13	FWF20015-S13S12W1B	.945(24.00)	1.098(27.90)	1.063(27.00)
14	FWF20015-S14S22W1B	1.024(26.00)	1.177(29.90)	1.142(29.00)	14	FWF20015-S14S12W1B	1.024(26.00)	1.177(29.90)	1.142(29.00)
15	FWF20015-S15S22W1B	1.102(28.00)	1.256(31.90)	1.220(31.00)	15	FWF20015-S15S12W1B	1.102(28.00)	1.256(31.90)	1.220(31.00)
16	FWF20015-S16S22W1B	1.181(30.00)	1.335(33.90)	1.299(33.00)	16	FWF20015-S16S12W1B	1.181(30.00)	1.335(33.90)	1.299(33.00)


E

D

C

B

A

 THIRD ANGLE PROJECTION	X ±.012(0.30) X.X ±.008(0.20) X.XX ±.006(0.15)	X ±.5 X ±.2 X.X ±.1	FRANK CHECKED BY JACOB DRAWN BY CHERRY	DATE 18/JUN/13 DATE 18/JUN/13	PART NO. FWF20015-SXXSX2W1B ITEM NO. FWF20015	TITLE Wire to Board (Water) Pitch 2.0mm 180° Vertical (DIP)	REV 0 SHEET NO. 1/1
	GENERAL TOLERANCES (UNLESS SPECIFIED)			APPROVE BY FRANK	DATE 18/JUN/13	THIS DRAWING CONTAINS INFORMATION THAT IS PROPRIETARY TO TXGA INDUSTRIAL ELECTRONICS(SZ)CO.,LTD AND SHOULD NOT BE USED WITHOUT WRITTEN PERMISSION	Leader Of Industry TXGA

5:1 A4 SCALE SIZE X.XX ±.004(0.10) X.XX ±.0.5

4 3 2 1

F

E

D

C

B

A

X-ON Electronics

Largest Supplier of Electrical and Electronic Components

Click to view similar products for [Headers & Wire Housings](#) category:

Click to view products by [TXGA](#) manufacturer:

Other Similar products are found below :

[95000-104TRLF](#) [10135584-644402LF](#) [DF62W-EP2022PCA](#) [95000-106TRLF](#) [DF62W-2022SCA](#) [DF62W-EP2022PC](#) [2203348](#) [DF62W-2022SC](#) [1084018](#) [1029039](#) [1084017](#) [802-10-012-10-002000](#) [1112640](#) [1112639](#) [891-007-9SS-BST1T](#) [000-34000](#) [0008550134](#) [0009482033](#) [0009507031](#) [57102-F02-18ULF](#) [57102-S06-03LF](#) [57202-S52-04LF](#) [PCN6-15S-2.5E](#) [0039019024](#) [58102-G61-06LF](#) [582553-1](#) [0009485154](#) [0009508121](#) [0022285053](#) [0050291907](#) [018731A](#) [LY20-4P-DT1-P1E-BR](#) [02.125.8002.8](#) [60101931](#) [60598-1 \(Cut Strip\)](#) [M1625-3R/100](#) [61062-3](#) [61082-181009](#) [CSU011177004](#) [636-1427](#) [638009-1](#) [641938-9](#) [641991-4](#) [644168-1](#) [644827-2](#) [647662-1](#) [65039-019ELF](#) [65692-001LF](#) [65781-018](#) [65781-047](#)