

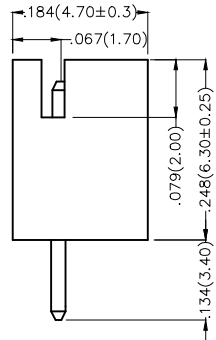
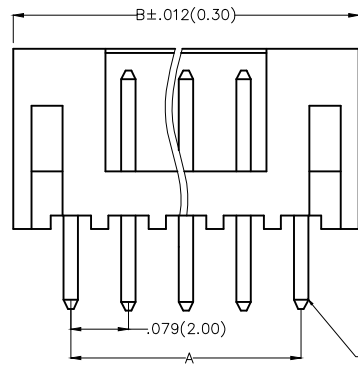
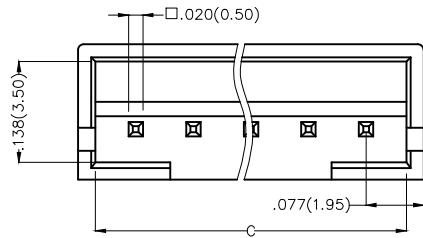
REV	LOCATIONS	DESCRIPTION	DATE	REVISER	APPD

Electrical

Current Rating: 2.0A AC(rms)/DC
Voltage Rating: 100V AC(rms)/DC
Contact Resistance: 10 mΩ Max
Insulation Resistance: 1000 MΩ MIN
Withstanding Voltage: 800V AC r.m.s
Temperature Range-Operating: -25°C~+85°C

Material and Plating

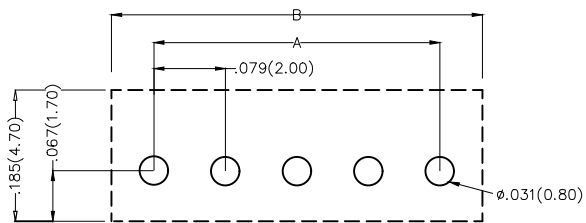
Housing: PA66(UL 94V-2)
Contact Pin: Brass
Plating: Full gold/ Full tin




Ordering Information

FWF 200 15 — S XX S X 2 W1 B
1 2 3 4 5 6 7 8 9 10

1	Category FWF-Wafer	2	Series Number 200-Pitch2.0mm	3	Distinction No. 15	4	Row Option S-Single Row	5	Circuits XX	6	Entry Angle S-180° Vertical
7	Plating 1-Gold Plated 2-Tin Plated	8	Material-Resin 2-PA66	9	Color-Resin W1-White	10	Packaging B-PE Bag				

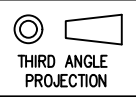



Recommended P.C.Board Layout

THIRD ANGLE PROJECTION	GENERAL TOLERANCES (UNLESS SPECIFIED)		APPROVE BY FRANK	DATE 18/JUN/13	PART NO. FWF20015-SXXSX2WB	ITEM NO. FWF20015	 Leader Of Industry	
	DESIGN UNITS Inch (metric)	X.±.012(0.30) X.X±.008(0.20) X.XX±.006(0.15) X.XXX±.004(0.10)	.X'±5' .X'±2' .XX'±1' .XXX'±0.5'	CHECKED BY JACOB	DATE 18/JUN/13	TITLE Wire to Board (Wafer) Pitch 2.0mm 180° Vertical (DIP)		REV 0
SCALE 5:1	SIZE A4	DRAWN BY CHERRY		DATE 18/JUN/13	THIS DRAWING CONTAINS INFORMATION THAT IS PROPRIETARY TO TXGA INDUSTRIAL ELECTRONICS(S.Z)CO.,LTD AND SHOULD NOT BE USED WITHOUT WRITTEN PERMISSION			

REV	LOCATIONS	DESCRIPTION	DATE	REVISER	APPD

Material and Plating : Housing PA66 UL94V-2 , Tin-Plated all .					Material and Plating : Housing PA66 UL94V-2 , Gold Flash .				
Circuits (n)	Part No.	Dimensions(in/mm)			Circuits (n)	Part No.	Dimensions(in/mm)		
		A	B	C			A	B	C
2	FWF20015-S02S22W1B	.079(2.00)	.232(5.90)	.197(5.00)	2	FWF20015-S02S12W1B	.079(2.00)	.232(5.90)	.197(5.00)
3	FWF20015-S03S22W1B	.157(4.00)	.311(7.90)	.157(7.00)	3	FWF20015-S03S12W1B	.157(4.00)	.311(7.90)	.157(7.00)
4	FWF20015-S04S22W1B	.236(6.00)	.390(9.90)	.354(9.00)	4	FWF20015-S04S12W1B	.236(6.00)	.390(9.90)	.354(9.00)
5	FWF20015-S05S22W1B	.315(8.00)	.469(11.90)	.433(11.00)	5	FWF20015-S05S12W1B	.315(8.00)	.469(11.90)	.433(11.00)
6	FWF20015-S06S22W1B	.394(10.00)	.547(13.90)	.512(13.00)	6	FWF20015-S06S12W1B	.394(10.00)	.547(13.90)	.512(13.00)
7	FWF20015-S07S22W1B	.472(12.00)	.626(15.90)	.591(15.00)	7	FWF20015-S07S12W1B	.472(12.00)	.626(15.90)	.591(15.00)
8	FWF20015-S08S22W1B	.551(14.00)	.705(17.90)	.670(17.00)	8	FWF20015-S08S12W1B	.551(14.00)	.705(17.90)	.670(17.00)
9	FWF20015-S09S22W1B	.630(16.00)	.783(19.90)	.748(19.00)	9	FWF20015-S09S12W1B	.630(16.00)	.783(19.90)	.748(19.00)
10	FWF20015-S10S22W1B	.709(18.00)	.862(21.90)	.827(21.00)	10	FWF20015-S10S12W1B	.709(18.00)	.862(21.90)	.827(21.00)
11	FWF20015-S11S22W1B	.787(20.00)	.941(23.90)	.906(23.00)	11	FWF20015-S11S12W1B	.787(20.00)	.941(23.90)	.906(23.00)
12	FWF20015-S12S22W1B	.866(22.00)	1.020(25.90)	.984(25.00)	12	FWF20015-S12S12W1B	.866(22.00)	1.020(25.90)	.984(25.00)
13	FWF20015-S13S22W1B	.945(24.00)	1.098(27.90)	1.063(27.00)	13	FWF20015-S13S12W1B	.945(24.00)	1.098(27.90)	1.063(27.00)
14	FWF20015-S14S22W1B	1.024(26.00)	1.177(29.90)	1.142(29.00)	14	FWF20015-S14S12W1B	1.024(26.00)	1.177(29.90)	1.142(29.00)
15	FWF20015-S15S22W1B	1.102(28.00)	1.256(31.90)	1.220(31.00)	15	FWF20015-S15S12W1B	1.102(28.00)	1.256(31.90)	1.220(31.00)
16	FWF20015-S16S22W1B	1.181(30.00)	1.335(33.90)	1.299(33.00)	16	FWF20015-S16S12W1B	1.181(30.00)	1.335(33.90)	1.299(33.00)

 THIRD ANGLE PROJECTION	GENERAL TOLERANCES (UNLESS SPECIFIED)		APPROVE BY	DATE	PART NO.	ITEM NO.	 Leader Of Industry	
	X.±.012(0.30)	X.'±5'	FRANK	18/JUN/13	FWF20015-SXXSX2W1B	FWF20015		
	X.X±.008(0.20)	X.'±2'	CHECKED BY	DATE	TITLE	REV 0		SHEET NO. 1/1
	X.XX±.006(0.15)	.XX'±1'	JACOB	18/JUN/13	Wire to Board (Wafer) Pitch 2.0mm 180° Vertical (DIP)			
SCALE	SIZE	X.XXX±.004(0.10)	.XXX'±0.5'	DRAWN BY	DATE	THIS DRAWING CONTAINS INFORMATION THAT IS PROPRIETARY TO TXGA INDUSTRIAL ELECTRONICS(S.Z)CO.,LTD AND SHOULD NOT BE USED WITHOUT WRITTEN PERMISSION		
5:1	A4			CHERRY	18/JUN/13			

X-ON Electronics

Largest Supplier of Electrical and Electronic Components

Click to view similar products for [Headers & Wire Housings](#) category:

Click to view products by [TXGA](#) manufacturer:

Other Similar products are found below :

[0015917161](#) [0022155065](#) [57102-F02-18ULF](#) [58102-G61-06LF](#) [582553-1](#) [01.001.5753.1](#) [0050291907](#) [02.125.8002.8](#) [609-3404](#) [61062-3](#)
[CSU011177004](#) [622-0430](#) [622-3653LF](#) [63453-116](#) [636-1030](#) [636-1427](#) [636-3427](#) [636-4007](#) [641938-9](#) [65495-038](#) [65692-001LF](#) [65781-018](#)
[65781-047](#) [65817-010LF](#) [65817-015LF](#) [67095-007LF](#) [67601157](#) [68631-112](#) [68645-018](#) [699319-000](#) [70.362.1628.0](#) [70-4210](#) [70-4226B](#) [70-](#)
[4853B](#) [71.350.2428.0](#) [733-134](#) [733-162](#) [760-3052](#) [MHR-64-VUAL](#) [80.063.4001.1](#) [800-90-001-10-001000](#) [801-43-002-10-013000](#)
[801-43-006-10-002000](#) [803-43-024-10-001000](#) [803-93-012-10-001000](#) [8-1437020-4](#) [819-22-004-30-001101](#) [820-22-006-30-001101](#)
[820-22-008-30-001101](#) [821-22-002-10-001101](#)