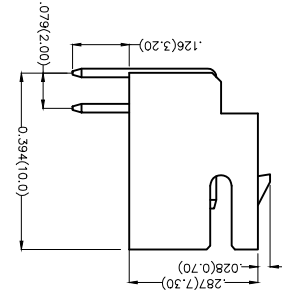
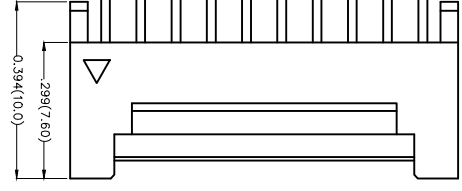
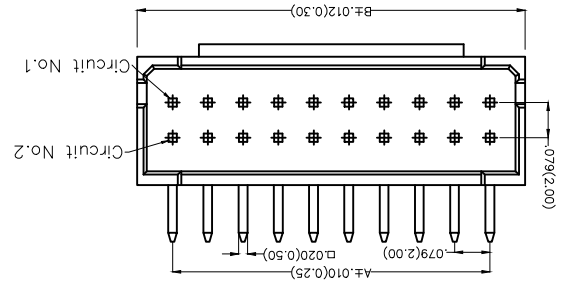


| REV | LOCATIONS | DESCRIPTION | DATE | REVISER | APPD |
|-----|-----------|-------------|------|---------|------|
|     |           |             |      |         |      |

**Electrical**  
 Current Rating: 3.0A AC(rms)/DC  
 Voltage Rating: 250V AC(rms)/DC  
 Contact Resistance: 30 mΩ Max  
 Insulation Resistance: 1000 MΩ MIN  
 Withstanding Voltage: 1000V AC r.m.s  
 Temperature Range—Operating: -25°C~+85°C  
 Material and Plating  
 Housing: P446 (UL 94V-0)  
 Contact Pin: Brass  
 Plating: Tin Plated



**Ordering Information**

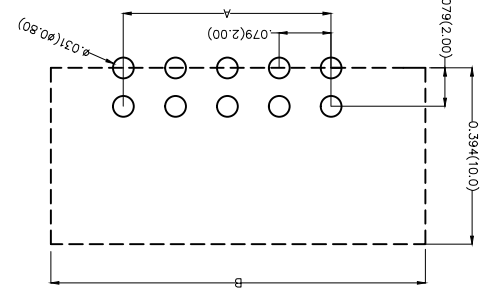
FWF 200 17 - D XX B 2 2 W5 B  
 1 2 3 4 5 6 7 8 9 10

- 1 Category FWF-Water
- 2 Series Number 200-Pitch2.0mm
- 3 Distinction No. 17
- 4 Row Option Double Row
- 5 Circuits XX
- 6 Entry Angle B-90° Angle
- 7 Plating 2-Tin Plated
- 8 Material-Resin 2-P446
- 9 Color-Resin W5-White
- 10 Packaging B-PE Bag

|   |                  |            |           |      |   |          |
|---|------------------|------------|-----------|------|---|----------|
| THIRD ANGLE PROJECTION  | X.±.012(0.30)    | X.±.7      | 18/JUN/13 | DATE | PART NO.  | ITEM NO. |
| GENERAL TOLERANCES (UNLESS SPECIFIED)   | FRANK            | CHECKED BY | 18/JUN/13 | DATE | FWF20017-DXXB22W5B                                | FWF20017 |
| DESIGN UNITS Inch (metric)  | X.±.008(0.20)    | JACOB      | 18/JUN/13 | DATE | TITLE   |          |
| SCALE 5:1 A4  | X.±.006(0.15)    | DRAWN BY   | 18/JUN/13 | DATE | Wire to Board (Water) Pitch 2.0mm 90° Angle (DIP) |          |
| SIZE  | X.XXX±.004(0.10) | CHERRY     | 18/JUN/13 | DATE | REV 0 SHEET NO. 1/2                               |          |
| THIS DRAWING CONTAINS INFORMATION THAT IS PROPRIETARY TO TXGA INDUSTRIAL ELECTRONICS(S)ZCO.,LTD AND SHOULD NOT BE USED WITHOUT WRITTEN PERMISSION |                  |            |           |      |   |          |




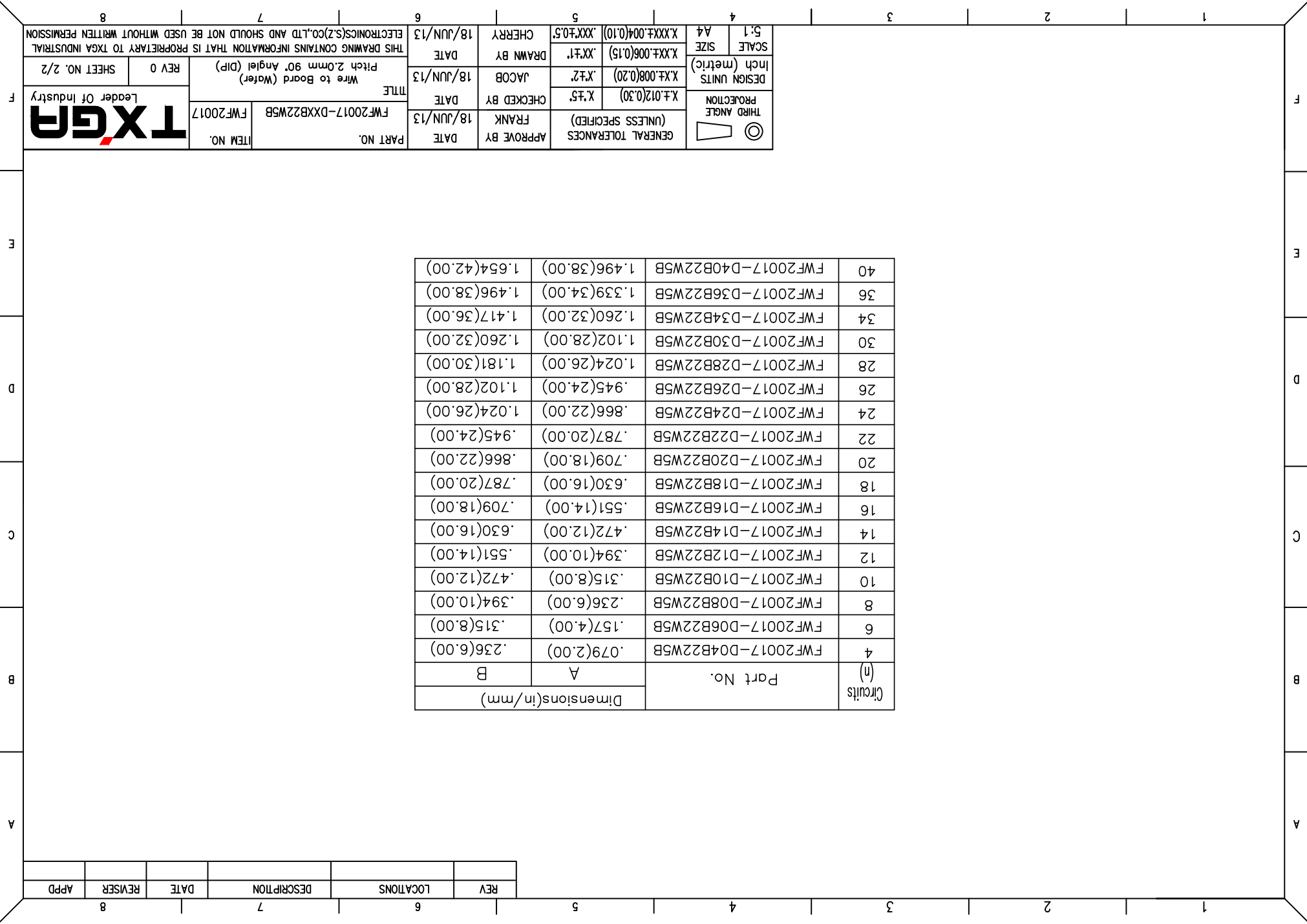
**Recommended P.C.Board Layout**



| REV | LOCATIONS | DESCRIPTION | DATE | REVISER | APPD |
|-----|-----------|-------------|------|---------|------|
|     |           |             |      |         |      |

| Circuits<br>(n) | Part No.           | Dimensions(in/mm) |              |
|-----------------|--------------------|-------------------|--------------|
|                 |                    | A                 | B            |
| 4               | FWF20017-D04B22W5B | .079(2.00)        | .236(6.00)   |
| 6               | FWF20017-D06B22W5B | .157(4.00)        | .315(8.00)   |
| 8               | FWF20017-D08B22W5B | .236(6.00)        | .394(10.00)  |
| 10              | FWF20017-D10B22W5B | .315(8.00)        | .472(12.00)  |
| 12              | FWF20017-D12B22W5B | .394(10.00)       | .551(14.00)  |
| 14              | FWF20017-D14B22W5B | .472(12.00)       | .630(16.00)  |
| 16              | FWF20017-D16B22W5B | .551(14.00)       | .709(18.00)  |
| 18              | FWF20017-D18B22W5B | .630(16.00)       | .787(20.00)  |
| 20              | FWF20017-D20B22W5B | .709(18.00)       | .866(22.00)  |
| 22              | FWF20017-D22B22W5B | .787(20.00)       | .945(24.00)  |
| 24              | FWF20017-D24B22W5B | .866(22.00)       | 1.024(26.00) |
| 26              | FWF20017-D26B22W5B | .945(24.00)       | 1.102(28.00) |
| 28              | FWF20017-D28B22W5B | 1.024(26.00)      | 1.181(30.00) |
| 30              | FWF20017-D30B22W5B | 1.102(28.00)      | 1.260(32.00) |
| 34              | FWF20017-D34B22W5B | 1.260(32.00)      | 1.417(36.00) |
| 36              | FWF20017-D36B22W5B | 1.339(34.00)      | 1.496(38.00) |
| 40              | FWF20017-D40B22W5B | 1.496(38.00)      | 1.654(42.00) |

|   |  |                     |                   |   |                        |
|---|--|---------------------|-------------------|---|------------------------|
| <br>THIRD ANGLE PROJECTION | GENERAL TOLERANCES<br>(UNLESS SPECIFIED) | APPROVE BY<br>FRANK | DATE<br>18/JUN/13 | PART NO.<br>FWF20017-DXXB22W5B  | ITEM NO.               |
|   | X.±.012(0.30)                            | CHECKED BY<br>JACOB | DATE<br>18/JUN/13 | TITLE<br>Wire to Board (Water)<br>Pitch 2.0mm 90° Angle (DIP)   | REV 0<br>SHEET NO. 2/2 |
| DESIGN UNITS<br>Inch (metric)   | X.±.008(0.20)<br>X.±.1                   | DRAWN BY<br>CHERRY  | DATE<br>18/JUN/13 | THIS DRAWING CONTAINS INFORMATION THAT IS PROPRIETARY TO TXGA INDUSTRIAL ELECTRONICS(SZ)CO.,LTD AND SHOULD NOT BE USED WITHOUT WRITTEN PERMISSION |                        |
| SCALE<br>5:1<br>A4  | X.±.004(0.10)<br>X.±.006(0.15)           | CHECKED BY<br>FRANK | DATE<br>18/JUN/13 | FWF20017-DXXB22W5B  |                        |



## X-ON Electronics

Largest Supplier of Electrical and Electronic Components

*Click to view similar products for [Headers & Wire Housings](#) category:*

*Click to view products by [TXGA](#) manufacturer:*

Other Similar products are found below :

[95000-104TRLF](#) [10135584-644402LF](#) [DF62W-EP2022PCA](#) [95000-106TRLF](#) [DF62W-2022SCA](#) [DF62W-EP2022PC](#) [2203348](#) [DF62W-2022SC](#) [1084018](#) [1029039](#) [1084017](#) [802-10-012-10-002000](#) [1112640](#) [1112639](#) [891-007-9SS-BST1T](#) [000-34000](#) [0008550134](#) [0009482033](#) [0009507031](#) [57102-F02-18ULF](#) [57102-S06-03LF](#) [57202-S52-04LF](#) [PCN6-15S-2.5E](#) [0039019024](#) [58102-G61-06LF](#) [582553-1](#) [0009485154](#) [0009508121](#) [0022285053](#) [0050291907](#) [018731A](#) [LY20-4P-DT1-P1E-BR](#) [02.125.8002.8](#) [60101931](#) [60598-1 \(Cut Strip\)](#) [M1625-3R/100](#) [61062-3](#) [61082-181009](#) [CSU011177004](#) [636-1427](#) [638009-1](#) [641938-9](#) [641991-4](#) [644168-1](#) [644827-2](#) [647662-1](#) [65039-019ELF](#) [65692-001LF](#) [65781-018](#) [65781-047](#)