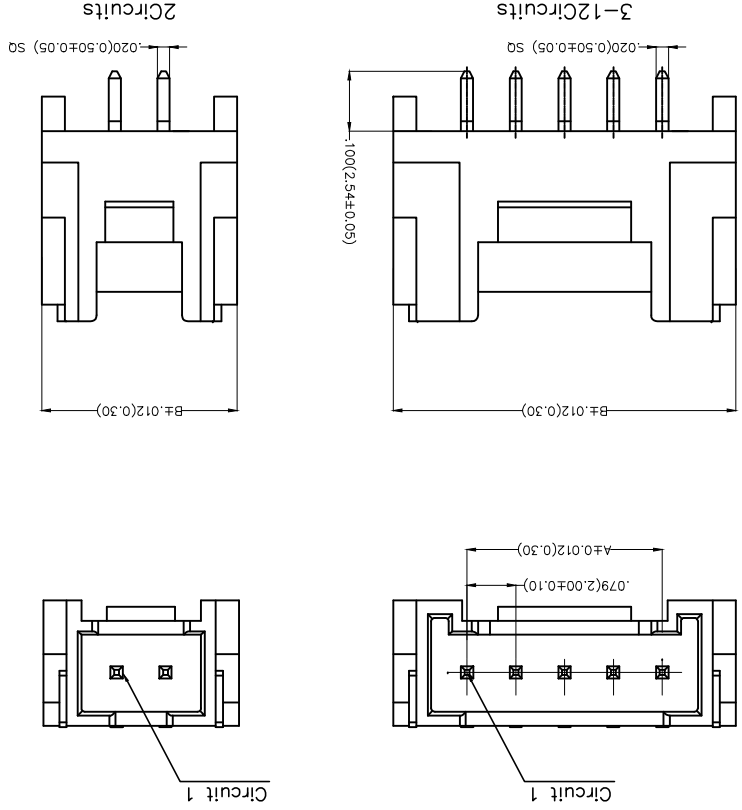
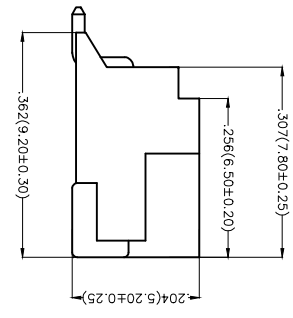


REV	LOCATIONS	DESCRIPTION	DATE	REVISER	APPD

Electrical
 Current Rating: 2.0A AC(rms)/DC
 Voltage Rating: 100V AC(rms)/DC
 Contact Resistance: 10 mΩ Max
 Insulation Resistance: 1000 MΩ MIN
 Withstanding Voltage: 800V AC r.m.s
 Temperature Range—Operating: -25°C~+85°C
 Material and Plating
 Housing: PA6T (UL 94V-0)
 Contact Pin: Brass
 Plating: Tin Plated

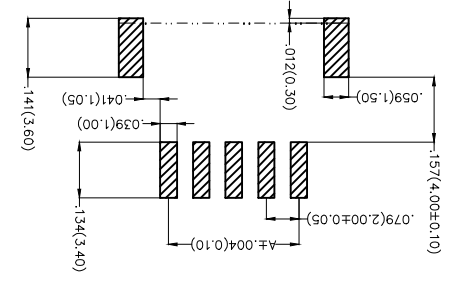


Ordering Information

1	Category	FWF-Water
2	Series Number	200-Pitch 2.0mm
3	Distinction No.	
4	Row Option	S-Single Row
5	Circuits	XX
6	Entry Angle	B-90° Angle
7	Plating	2-Tin Plated
8	Material-Resin	4-PA6T
9	Color-Resin	W5-Natural
10	Packaging	M-Reel

THIRD ANGLE PROJECTION	GENERAL TOLERANCES (UNLESS SPECIFIED)	APPROVE BY	DATE	PART NO.	ITEM NO.
	X.±.012(0.30)	FRANK	18/JUN/13	FWF20019-SXXB24W5M	FWF20019
DESIGN UNITS	X.X±.008(0.20)	CHECKED BY	DATE	TITLE	
Inch (metric)	X.X±.006(0.15)	CHERRY	18/JUN/13	Wire to Board (Water) Pitch 2.0mm 90° Angle (SMT)	
SCALE	X.XXX±.004(0.10)	DRAWN BY	DATE		
5:1	X.XXX±.004(0.10)	KEVIN	18/JUN/13		



Recommended P.C.Board Layout



THIS DRAWING CONTAINS INFORMATION THAT IS PROPRIETARY TO TXGA INDUSTRIAL ELECTRONICS(SZ)CO.,LTD AND SHOULD NOT BE USED WITHOUT WRITTEN PERMISSION

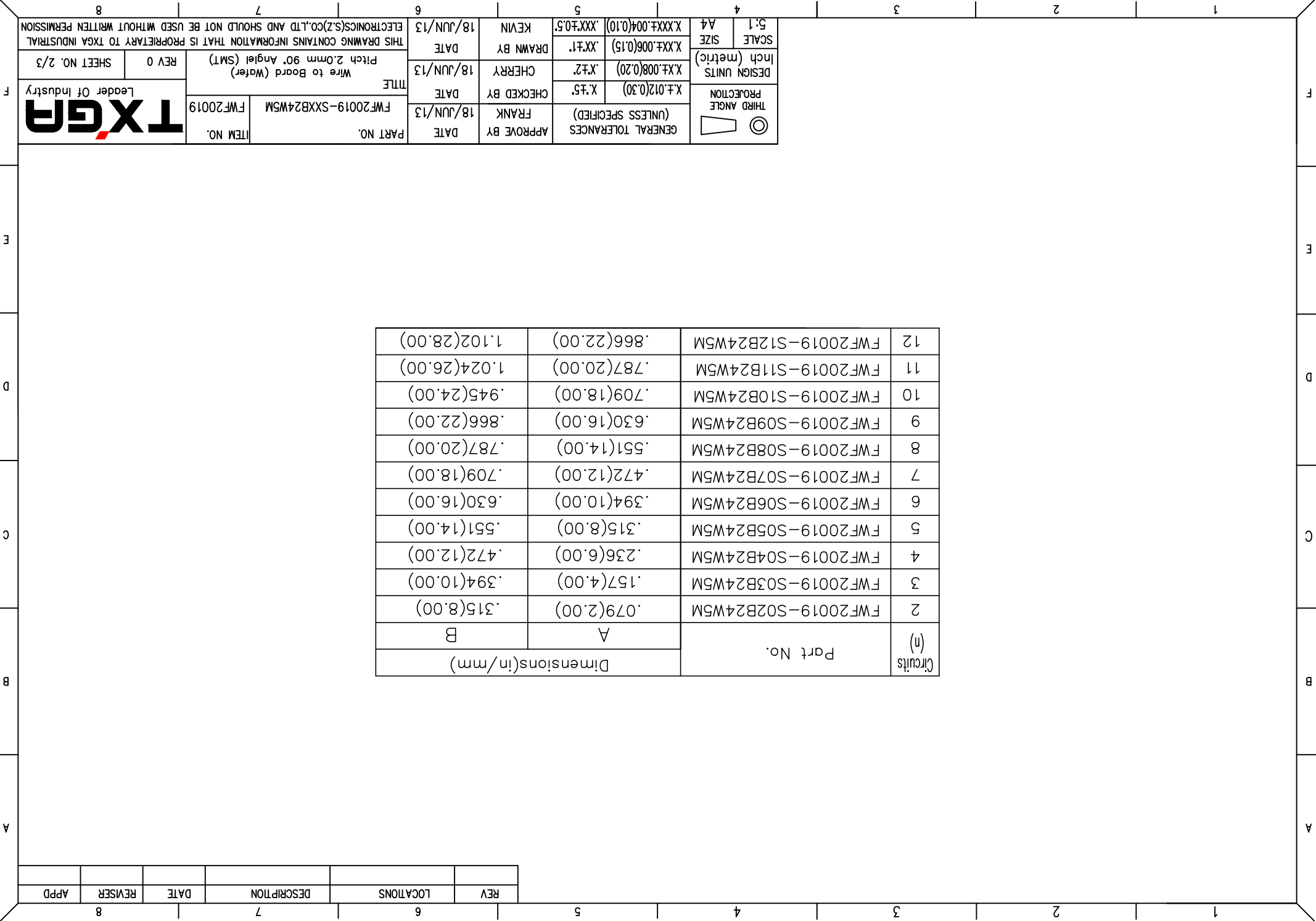


Circuits (n)	Part No.	Dimensions(in/mm)	
		A	B
2	FWF20019-S02B24W5M	.079(2.00)	.315(8.00)
3	FWF20019-S03B24W5M	.157(4.00)	.394(10.00)
4	FWF20019-S04B24W5M	.236(6.00)	.472(12.00)
5	FWF20019-S05B24W5M	.315(8.00)	.551(14.00)
6	FWF20019-S06B24W5M	.394(10.00)	.630(16.00)
7	FWF20019-S07B24W5M	.472(12.00)	.709(18.00)
8	FWF20019-S08B24W5M	.551(14.00)	.787(20.00)
9	FWF20019-S09B24W5M	.630(16.00)	.866(22.00)
10	FWF20019-S10B24W5M	.709(18.00)	.945(24.00)
11	FWF20019-S11B24W5M	.787(20.00)	1.024(26.00)
12	FWF20019-S12B24W5M	.866(22.00)	1.102(28.00)

 THIRD ANGLE PROJECTION	X ±.012(0.30)	X ±.5	FRANK	18/JUN/13	PART NO.	FWF20019-SXXB24W5M	ITEM NO.	FWF20019
	GENERAL TOLERANCES (UNLESS SPECIFIED)	APPROVE BY	DATE	FRANK	18/JUN/13	FWF20019-SXXB24W5M	ITEM NO.	FWF20019
 THIRD ANGLE PROJECTION	X ±.008(0.20)	X ±.2	CHECKED BY	18/JUN/13	TITLE	Wire to Board (Water)	Pitch 2.0mm 90° Angle (SMT)	REV 0
	DESIGN UNITS Inch (metric)	X ±.006(0.15)	X ±.1	CHERRY	18/JUN/13	DATE	18/JUN/13	DATE
SCALE 5:1 A4	X XXX ±.004(0.10)	X XXX ±.05	KEVIN	18/JUN/13	DATE	18/JUN/13	DATE	DATE
THIS DRAWING CONTAINS INFORMATION THAT IS PROPRIETARY TO TXGA INDUSTRIAL ELECTRONICS(SZ)CO.,LTD AND SHOULD NOT BE USED WITHOUT WRITTEN PERMISSION								

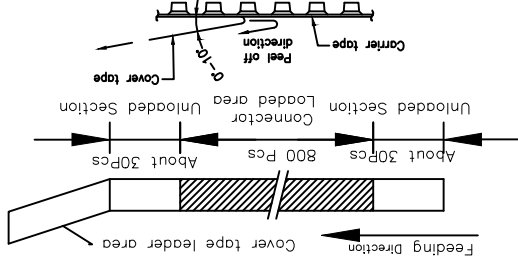
REV	LOCATIONS	DESCRIPTION	DATE	REVISER	APPD

8 7 6 5 4 3 2 1



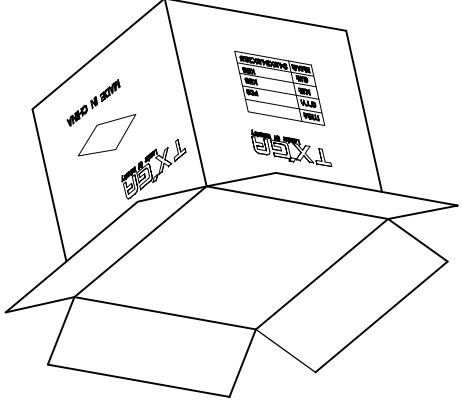
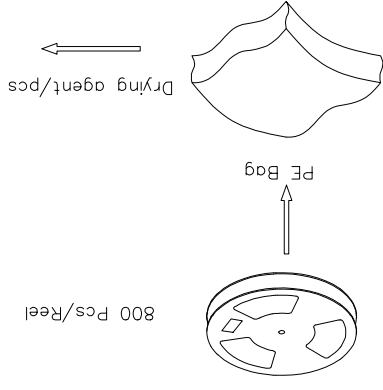
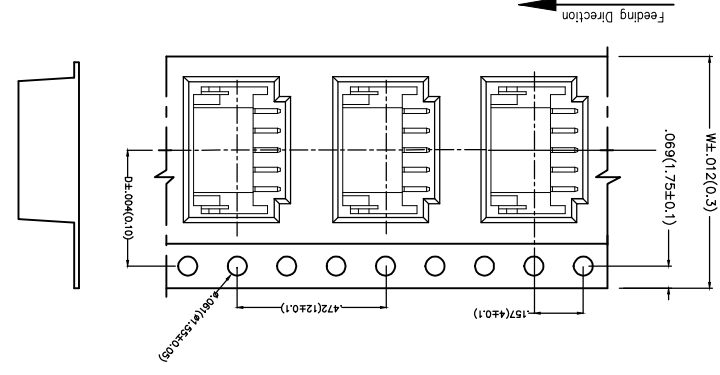
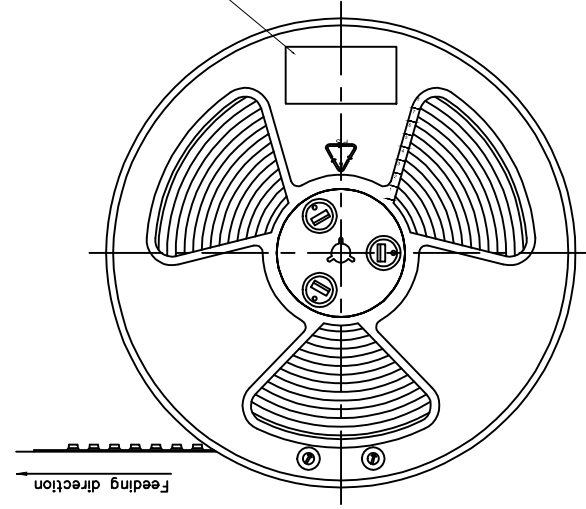
REV	LOCATIONS	DESCRIPTION	DATE	REVISER	APPD

Note:
1. 10 sprocket hole cumulative tolerance±0.2
2. Carrier camber is within 1.0mm in 100mm
3. Material: White Conductive polystyrene Alloy 100% recyclable
4. All dimensions meet EIA-481-3 requirements
5. Component load per 13" reel: 800 pcs



Circuits	Dimensions(in/mm)	
	D	W
2	.295(7.50)	.630(16.00)
3	.295(7.50)	.630(16.00)
4	.453(11.50)	.945(24.00)
5	.453(11.50)	.945(24.00)
6	.453(11.50)	.945(24.00)
7	.559(14.20)	1.260(32.00)

Circuits	Dimensions(in/mm)	
	D	W
2	.559(14.20)	1.260(32.00)
3	.559(14.20)	1.260(32.00)
4	.559(14.20)	1.260(32.00)
5	.795(20.20)	1.732(44.00)
6	.795(20.20)	1.732(44.00)
7	.795(20.20)	1.732(44.00)



THIRD ANGLE PROJECTION	DESIGN UNITS	X.X±.012(0.30)	X.±.5	CHECKED BY	FRANK	DATE	18/JUN/13	PART NO.	FWF20019-SXXB24W5M	ITEM NO.	FWF20019
	SCALE	A4	X.XXX±.004(0.10)	XX±.1	DRAWN BY	KEVIN	DATE	18/JUN/13	TITLE	Wire to Board (Water)	REV 0
GENERAL TOLERANCES (UNLESS SPECIFIED)	APPROVE BY	FRANK	DATE	18/JUN/13	APPROVE BY	FRANK	DATE	18/JUN/13	WIRE TO BOARD (WATER)	PITCH 2.0mm 90° ANGLE (SMT)	SHEET NO. 3/3
DESIGN UNITS	SCALE	A4	X.XXX±.004(0.10)	XX±.1	DRAWN BY	KEVIN	DATE	18/JUN/13	THIS DRAWING CONTAINS INFORMATION THAT IS PROPRIETARY TO TXGA INDUSTRIAL ELECTRONICS(SZ)CO.,LTD AND SHOULD NOT BE USED WITHOUT WRITTEN PERMISSION		



X-ON Electronics

Largest Supplier of Electrical and Electronic Components

Click to view similar products for [Headers & Wire Housings](#) category:

Click to view products by [TXGA](#) manufacturer:

Other Similar products are found below :

[95000-104TRLF](#) [10135584-644402LF](#) [DF62W-EP2022PCA](#) [95000-106TRLF](#) [DF62W-2022SCA](#) [DF62W-EP2022PC](#) [2203348](#) [DF62W-2022SC](#) [1084018](#) [1029039](#) [1084017](#) [802-10-012-10-002000](#) [1112640](#) [1112639](#) [891-007-9SS-BST1T](#) [000-34000](#) [0008550134](#) [0009482033](#) [0009507031](#) [57102-F02-18ULF](#) [57102-S06-03LF](#) [57202-S52-04LF](#) [PCN6-15S-2.5E](#) [0039019024](#) [58102-G61-06LF](#) [582553-1](#) [0009485154](#) [0009508121](#) [0022285053](#) [0050291907](#) [018731A](#) [LY20-4P-DT1-P1E-BR](#) [02.125.8002.8](#) [60101931](#) [60598-1 \(Cut Strip\)](#) [M1625-3R/100](#) [61062-3](#) [61082-181009](#) [CSU011177004](#) [636-1427](#) [638009-1](#) [641938-9](#) [641991-4](#) [644168-1](#) [644827-2](#) [647662-1](#) [65039-019ELF](#) [65692-001LF](#) [65781-018](#) [65781-047](#)