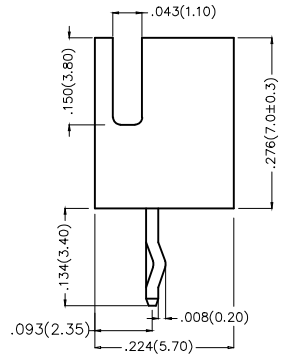
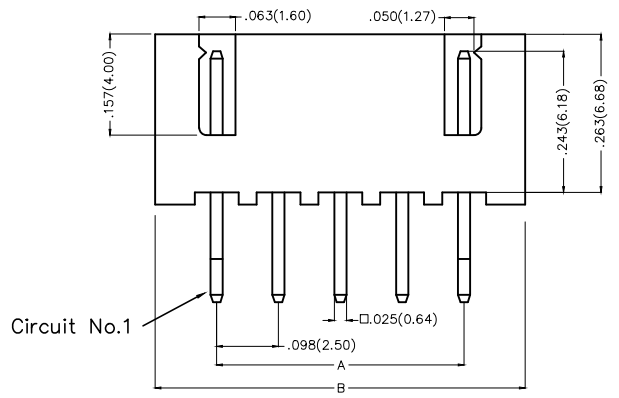


1 2 3 4 5 6 7 8

REV	LOCATIONS	DESCRIPTION	DATE	REVISED	APPD

**Electrical**

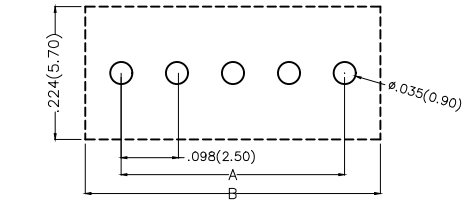
Current Rating: 3.0A AC(rms)/DC  
 Voltage Rating: 250V AC(rms)/DC  
 Contact Resistance: 20 mΩ Max  
 Insulation Resistance: 1000 MΩ MIN  
 Withstanding Voltage: 1000V AC r.m.s  
 Temperature Range—Operating: -40°C~+85°C  
**Material and Plating**  
 Housing: PA66( UL 94V-2)/PA6T( UL 94V-0)  
 Contact Pin: Brass  
 Plating: Tin Plated



**Ordering Information**

FWF 250 01 — S XX S 2 X XX B  
 1 2 3 4 5 6 7 8 9 10

1 Category FWF—Wafer	2 Series Number 250—Pitch2.5mm	3 Distinction No. 01	4 Row Option Single Row	5 Circuits XX	6 Entry Angle S—180° Vertical
7 Plating 2—Tin Plated	8 Material—Resin 2—PA66 4—PA6T	9 Color—Resin W1—White W5—White	10 Packaging B—PE Bag		



Recommended P.C.Board Layout

<p>THIRD ANGLE PROJECTION</p>	GENERAL TOLERANCES (UNLESS SPECIFIED)		APPROVE BY FRANK	DATE 28/JUN/13	PART NO. FWF25001—SXXS2XXXB	ITEM NO. FWF25001	<p>Leader Of Industry</p>
	X.±.012(0.30)	X.±5'	CHECKED BY JACOB	DATE 28/JUN/13	TITLE Wire to Board (Wafer) Pitch 2.5mm 180° Vertical (DIP)		
DESIGN UNITS Inch (metric)	X.X±.008(0.20)	.X'±2'	DRAWN BY CHERRY	DATE 28/JUN/13	THIS DRAWING CONTAINS INFORMATION THAT IS PROPRIETARY TO TXGA INDUSTRIAL ELECTRONICS(S.Z)CO.,LTD AND SHOULD NOT BE USED WITHOUT WRITTEN PERMISSION		
SCALE 5:1	SIZE A4	X.XX±.006(0.15)	.XX'±1'	X.XXX±.004(0.10)	.XX'±0.5'		

1 2 3 4 5 6 7 8

1 2 3 4 5 6 7 8

REV	LOCATIONS	DESCRIPTION	DATE	REVISED	APPD

A

A

B

B

C

C

D

D



E

E

F

F

Material and Plating : Housing PA66 UL94V-2 , Tin Plated.				Material and Plating : Housing PA6T UL94V-0 , Tin Plated.			
Circuits (n)	Part No.	Dimensions(in/mm)		Circuits (n)	Part No.	Dimensions(in/mm)	
		A	B			A	B
2	FWF25001-S02S22W1B	.098(2.50)	.295(7.50)	2	FWF25001-S02S24W5B	.098(2.50)	.295(7.50)
3	FWF25001-S03S22W1B	.197(5.00)	.394(10.00)	3	FWF25001-S03S24W5B	.197(5.00)	.394(10.00)
4	FWF25001-S04S22W1B	.295(7.50)	.492(12.50)	4	FWF25001-S04S24W5B	.295(7.50)	.492(12.50)
5	FWF25001-S05S22W1B	.394(10.00)	.591(15.00)	5	FWF25001-S05S24W5B	.394(10.00)	.591(15.00)
6	FWF25001-S06S22W1B	.492(12.50)	.689(17.50)	6	FWF25001-S06S24W5B	.492(12.50)	.689(17.50)
7	FWF25001-S07S22W1B	.591(15.00)	.787(20.00)	7	FWF25001-S07S24W5B	.591(15.00)	.787(20.00)
8	FWF25001-S08S22W1B	.689(17.50)	.886(22.50)	8	FWF25001-S08S24W5B	.689(17.50)	.886(22.50)
9	FWF25001-S09S22W1B	.787(20.00)	.984(25.00)	9	FWF25001-S09S24W5B	.787(20.00)	.984(25.00)
10	FWF25001-S10S22W1B	.886(22.50)	1.083(27.50)	10	FWF25001-S10S24W5B	.886(22.50)	1.083(27.50)
11	FWF25001-S11S22W1B	.984(25.00)	1.181(30.00)	11	FWF25001-S11S24W5B	.984(25.00)	1.181(30.00)
12	FWF25001-S12S22W1B	1.083(27.50)	1.280(32.50)	12	FWF25001-S12S24W5B	1.083(27.50)	1.280(32.50)
13	FWF25001-S13S22W1B	1.181(30.00)	1.378(35.00)	13	FWF25001-S13S24W5B	1.181(30.00)	1.378(35.00)
14	FWF25001-S14S22W1B	1.280(32.50)	1.476(37.50)	14	FWF25001-S14S24W5B	1.280(32.50)	1.476(37.50)
15	FWF25001-S15S22W1B	1.378(35.00)	1.575(40.00)	15	FWF25001-S15S24W5B	1.378(35.00)	1.575(40.00)
16	FWF25001-S16S22W1B	1.476(37.50)	1.673(42.50)	16	FWF25001-S16S24W5B	1.476(37.50)	1.673(42.50)

 THIRD ANGLE PROJECTION	GENERAL TOLERANCES (UNLESS SPECIFIED)		APPROVE BY	DATE	PART NO.	ITEM NO.	 Leader Of Industry
	X.±.012(0.30)	X.±5'	FRANK	28/JUN/13	FWF25001-SXXS2XXXB	FWF25001	
	X.X±.008(0.20)	.X±2'	CHECKED BY	DATE	TITLE		
	X.XX±.006(0.15)	.XX±1'	JACOB	28/JUN/13	Wire to Board (Wafer) Pitch 2.5mm 180° Vertical (DIP)	REV 0	
SCALE	SIZE	X.XXX±.004(0.10)	.XXX±0.5'	DRAWN BY	DATE	THIS DRAWING CONTAINS INFORMATION THAT IS PROPRIETARY TO TXGA INDUSTRIAL ELECTRONICS(S.Z)CO.,LTD AND SHOULD NOT BE USED WITHOUT WRITTEN PERMISSION	
5:1	A4			CHERRY	28/JUN/13		

1 2 3 4 5 6 7 8

## X-ON Electronics

Largest Supplier of Electrical and Electronic Components

*Click to view similar products for [Headers & Wire Housings](#) category:*

*Click to view products by [TXGA](#) manufacturer:*

Other Similar products are found below :

[95000-104TRLF](#) [10135584-644402LF](#) [DF62W-EP2022PCA](#) [95000-106TRLF](#) [DF62W-2022SCA](#) [DF62W-EP2022PC](#) [2203348](#) [DF62W-2022SC](#) [1084018](#) [1029039](#) [1084017](#) [802-10-012-10-002000](#) [1112640](#) [1112639](#) [891-007-9SS-BST1T](#) [000-34000](#) [0008550134](#) [0009482033](#) [0009507031](#) [57102-F02-18ULF](#) [57102-S06-03LF](#) [57202-S52-04LF](#) [PCN6-15S-2.5E](#) [0039019024](#) [58102-G61-06LF](#) [582553-1](#) [0009485154](#) [0009508121](#) [0022285053](#) [0050291907](#) [018731A](#) [LY20-4P-DT1-P1E-BR](#) [02.125.8002.8](#) [60101931](#) [60598-1 \(Cut Strip\)](#) [M1625-3R/100](#) [61062-3](#) [61082-181009](#) [CSU011177004](#) [636-1427](#) [638009-1](#) [641938-9](#) [641991-4](#) [644168-1](#) [644827-2](#) [647662-1](#) [65039-019ELF](#) [65692-001LF](#) [65781-018](#) [65781-047](#)