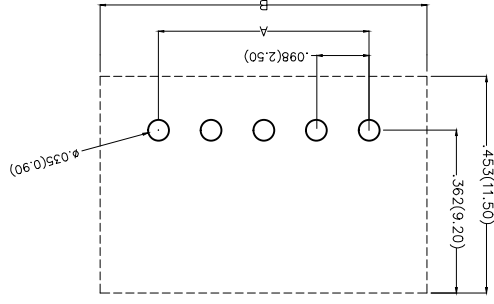
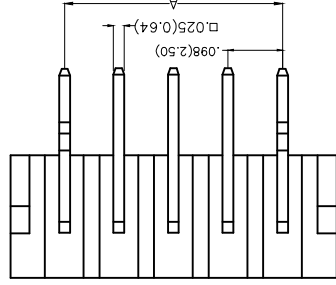
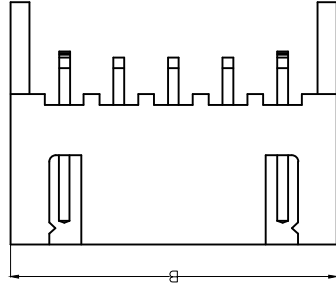
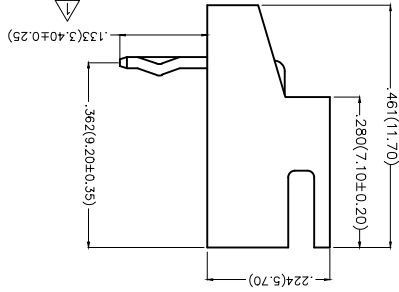


REV	1	△		
DESCRIPTION	ADD DIM	23/Oct/15	KEVIN	CHERRY
REVERSE	DATE			
APPD				

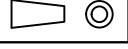
**Electrical**  
 Current Rating: 3.0A AC(rms)/DC  
 Voltage Rating: 250V AC(rms)/DC  
 Contact Resistance: 20 mΩ Max  
 Insulation Resistance: 1000 MΩ MIN  
 Withstanding Voltage: 1000V AC r.m.s  
 Temperature Range—Operating: -25°C~+85°C  
 Material and Plating  
 Housing: PA66 (UL 94V-2)  
 Contact Pin: Brass  
 Plating: Tin Plated



1	Category	WF-Water	7	Plating	2-Tin Plated
2	Series Number	250-Pitch,2.50mm	8	Material-Resin	2-PA66
3	Distinction No.	02	9	Color-Resin	W1-White
4	Row Option	S-Single Row	10	Packaging	B-PE Bag
5	Circuits	XX			
6	Entry Angle	B-90° Angle			

Ordering Information  
 FWF 250 02 - S XX B 2 W1 B

GENERAL TOLERANCES (UNLESS SPECIFIED)	APPROVE BY	DATE	PART NO.	ITEM NO.
X.±.012(0.30)	FRANK	01/JUL/13	FWF25002-SXXB22W1B	FWF25002
X.±.008(0.20)	CHECKED BY	DATE	TITLE	
X.±.006(0.15)	JACOB	01/JUL/13	Wire to Board (Water) Pitch 2.5mm 90° Angle (DIP)	
X.XXX±.004(0.10)	DRAWN BY	DATE	REV 1	SHEET NO. 1/2
X.XXX±.05	CHERRY	01/JUL/13		



THIRD ANGLE PROJECTION

DESIGN UNITS Inch (metric)

SCALE 5:1 A4

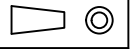
THIS DRAWING CONTAINS INFORMATION THAT IS PROPRIETARY TO TXGA INDUSTRIAL ELECTRONICS(SZ)CO.,LTD AND SHOULD NOT BE USED WITHOUT WRITTEN PERMISSION



REV	LOCATIONS	DESCRIPTION	DATE	REVISER	APPD

Circuits (n)	Part No.	Dimensions(in/mm)	
		A	B
2	FWF25002-S02B22W1B	.098(2.50)	.295(7.50)
3	FWF25002-S03B22W1B	.197(5.00)	.394(10.00)
4	FWF25002-S04B22W1B	.295(7.50)	.492(12.50)
5	FWF25002-S05B22W1B	.394(10.00)	.591(15.00)
6	FWF25002-S06B22W1B	.492(12.50)	.689(17.50)
7	FWF25002-S07B22W1B	.591(15.00)	.787(20.00)
8	FWF25002-S08B22W1B	.689(17.50)	.886(22.50)
9	FWF25002-S09B22W1B	.787(20.00)	.984(25.00)
10	FWF25002-S10B22W1B	.886(22.50)	1.083(27.50)
11	FWF25002-S11B22W1B	.984(25.00)	1.181(30.00)
12	FWF25002-S12B22W1B	1.083(27.50)	1.278(32.50)
13	FWF25002-S13B22W1B	1.181(30.00)	1.378(35.00)

Material and Plating : Housing PA66 UL94V-2 , Tin Plated.



THIRD ANGLE PROJECTION

DESIGN UNITS Inch (metric)

SCALE 5:1 A4

GENERAL TOLERANCES (UNLESS SPECIFIED)  
 APPROVE BY FRANK DATE 01/JUL/13  
 CHECKED BY JACOB DATE 01/JUL/13  
 DRAWN BY CHERRY DATE 01/JUL/13

X±.012(0.30) X±.008(0.20) X±.006(0.15) X±.004(0.10) X±.004(0.10)

PART NO. FWF25002-SXXB22W1B  
 ITEM NO. FWF25002

TITLE Wire to Board (Water Pitch 2.5mm 90° Angle (DIP))

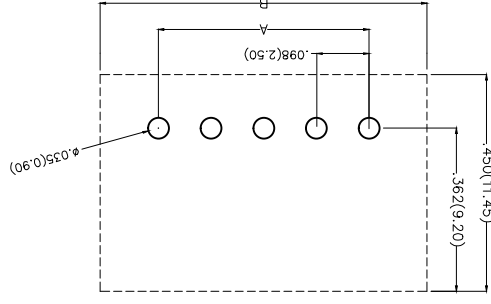
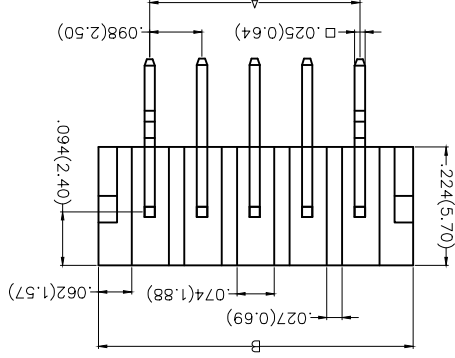
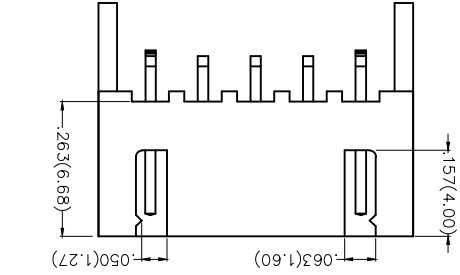
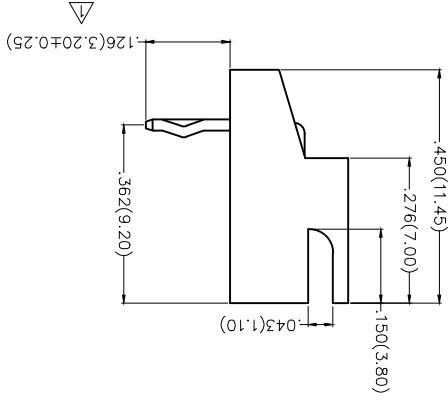
REV 1 SHEET NO. 2/2



THIS DRAWING CONTAINS INFORMATION THAT IS PROPRIETARY TO TXGA INDUSTRIAL ELECTRONICS(SZ)CO.,LTD AND SHOULD NOT BE USED WITHOUT WRITTEN PERMISSION

REV	LOCATIONS	DESCRIPTION	DATE	REWSEER	APPD
1	▽	ADD DIM	23/Oct/15	KEVIN	CHERY

**Electrical**  
 Current Rating: 3.0A AC(rms)/DC  
 Voltage Rating: 250V AC(rms)/DC  
 Contact Resistance: 20 mΩ Max  
 Insulation Resistance: 1000 MΩ MIN  
 Withstanding Voltage: 1000V AC r.m.s  
 Temperature Range—Operating: -25°C~+85°C  
 Material and Plating  
 Housing: PA6T( UL 94V-0)  
 Contact Pin: Brass  
 Plating: Tin Plated



Recommended P.C.Board Layout

THIRD ANGLE PROJECTION	DESIGN UNITS Inch (metric)	SCALE 5:1 A4
------------------------	----------------------------	--------------

GENERAL TOLERANCES (UNLESS SPECIFIED)	CHECKED BY X.F.5	DATE 01/JUL/13
APPROVE BY FRANK	DRAWN BY JACOB	DATE 01/JUL/13
		CHERRY

PART NO. FWF25002-SXXB24W5B	ITEM NO. FWF25002	TITLE Wire to Board (Water) Pitch 2.5mm 90° Angle (DIP)	REV 1	SHEET NO. 1/2
-----------------------------	-------------------	---	-------	---------------

**TXGR**  
 Leader Of Industry

1	Category	1	WF-Water
2	Series Number	2	250-Pitch 2.50mm
3	Distinction No.	3	02
4	Row Option	4	S-Single Row
5	Circuits	5	XX
6	Entry Angle	6	B-90° Angle
7	Plating	7	2-Tin Plated
8	Material-Resin	8	4-PA6T
9	Color-Resin	9	W5-White
10	Packaging	10	B-PE Bag

Ordering Information  
 FWF 250 02 - S XX B 2 4 W5 B


A B C D E F

1 2 3 4 5 6 7 8

REV	LOCATIONS	DESCRIPTION	DATE	REVISER	APPD

Circuits (n)	Part No.	Dimensions(in/mm)	
		A	B
2	FWF25002-S02B24W5B	.098(2.50)	.295(7.50)
3	FWF25002-S03B24W5B	.197(5.00)	.394(10.00)
4	FWF25002-S04B24W5B	.295(7.50)	.492(12.50)
5	FWF25002-S05B24W5B	.394(10.00)	.591(15.00)
6	FWF25002-S06B24W5B	.492(12.50)	.689(17.50)
7	FWF25002-S07B24W5B	.591(15.00)	.787(20.00)
8	FWF25002-S08B24W5B	.689(17.50)	.886(22.50)
9	FWF25002-S09B24W5B	.787(20.00)	.984(25.00)
10	FWF25002-S10B24W5B	.886(22.50)	1.083(27.50)
11	FWF25002-S11B24W5B	.984(25.00)	1.181(30.00)
12	FWF25002-S12B24W5B	1.083(27.50)	1.279(32.50)
13	FWF25002-S13B24W5B	1.181(30.00)	1.378(35.00)
14	FWF25002-S14B24W5B	1.279(32.50)	1.476(37.50)
15	FWF25002-S15B24W5B	1.378(35.00)	1.575(40.00)
16	FWF25002-S16B24W5B	1.476(37.50)	1.673(42.50)

Material and Plating : Housing PA6T UL94V-0 , Tin Plated.

 THIRD ANGLE PROJECTION		GENERAL TOLERANCES (UNLESS SPECIFIED)	APPROVE BY FRANK	DATE 01/JUL/13	PART NO. FWF25002-SXXB24W5B	ITEM NO. FWF25002
DESIGN UNITS Inch (metric)	X.±.012(0.30)	X.±.5	CHECKED BY JACOB	DATE 01/JUL/13	TITLE Wire to Board (Water) Pitch 2.5mm 90° Angle (DIP)	REV 1 SHEET NO. 2/2
SCALE SIZE 5:1 A4	X.XX±.008(0.20)	X.±.1	DRAWN BY CHERRY	DATE 01/JUL/13	THIS DRAWING CONTAINS INFORMATION THAT IS PROPRIETARY TO TXGA INDUSTRIAL ELECTRONICS(SZ)CO.,LTD AND SHOULD NOT BE USED WITHOUT WRITTEN PERMISSION	

GENERAL TOLERANCES (UNLESS SPECIFIED)		APPROVE BY FRANK	DATE 01/JUL/13	PART NO. FWF25002-SXXB24W5B	ITEM NO. FWF25002	
DESIGN UNITS Inch (metric)	X.±.012(0.30)	X.±.5	CHECKED BY JACOB	DATE 01/JUL/13	TITLE Wire to Board (Water) Pitch 2.5mm 90° Angle (DIP)	
SCALE SIZE 5:1 A4	X.XX±.008(0.20)	X.±.1	DRAWN BY CHERRY	DATE 01/JUL/13	THIS DRAWING CONTAINS INFORMATION THAT IS PROPRIETARY TO TXGA INDUSTRIAL ELECTRONICS(SZ)CO.,LTD AND SHOULD NOT BE USED WITHOUT WRITTEN PERMISSION	

APPD

8

7

6

5

4

3

2

1

E

D

C

B

A

F

E

D

C

B

A

## X-ON Electronics

Largest Supplier of Electrical and Electronic Components

*Click to view similar products for [Headers & Wire Housings](#) category:*

*Click to view products by [TXGA](#) manufacturer:*

Other Similar products are found below :

[95000-104TRLF](#) [10135584-644402LF](#) [DF62W-EP2022PCA](#) [95000-106TRLF](#) [DF62W-2022SCA](#) [DF62W-EP2022PC](#) [2203348](#) [DF62W-2022SC](#) [1084018](#) [1029039](#) [1084017](#) [802-10-012-10-002000](#) [1112640](#) [1112639](#) [891-007-9SS-BST1T](#) [000-34000](#) [0008550134](#) [0009482033](#) [0009507031](#) [57102-F02-18ULF](#) [57102-S06-03LF](#) [57202-S52-04LF](#) [PCN6-15S-2.5E](#) [0039019024](#) [58102-G61-06LF](#) [582553-1](#) [0009485154](#) [0009508121](#) [0022285053](#) [0050291907](#) [018731A](#) [LY20-4P-DT1-P1E-BR](#) [02.125.8002.8](#) [60101931](#) [60598-1 \(Cut Strip\)](#) [M1625-3R/100](#) [61062-3](#) [61082-181009](#) [CSU011177004](#) [636-1427](#) [638009-1](#) [641938-9](#) [641991-4](#) [644168-1](#) [644827-2](#) [647662-1](#) [65039-019ELF](#) [65692-001LF](#) [65781-018](#) [65781-047](#)