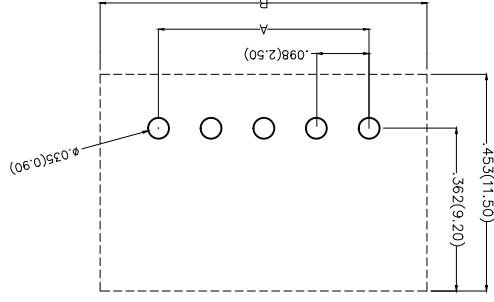
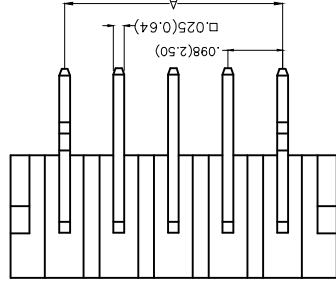
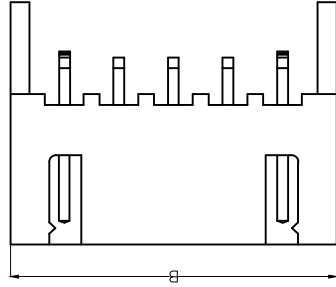
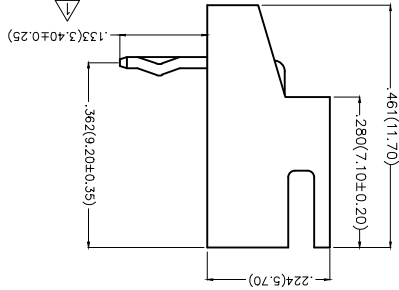


REV	1	△		
DESCRIPTION				
DATE	23/Oct/15			
REVERSE	KEVN			
APPD	CHERRY			

Electrical
 Current Rating: 3.0A AC(rms)/DC
 Voltage Rating: 250V AC(rms)/DC
 Contact Resistance: 20 mΩ Max
 Insulation Resistance: 1000 MΩ MIN
 Withstanding Voltage: 1000V AC r.m.s
 Temperature Range—Operating: -25°C~+85°C
 Material and Plating
 Housing: PA66 (UL 94V-2)
 Contact Pin: Brass
 Plating: Tin Plated



Recommended P.C.Board Layout

THIRD ANGLE PROJECTION	◎
DESIGN UNITS	Inch (metric)
SCALE	5:1 A4

GENERAL TOLERANCES (UNLESS SPECIFIED)	DATE	APPROVE BY
X.±.012(0.30)	01/JUL/13	FRANK
X.±.008(0.20)	01/JUL/13	JACOB
X.XX±.006(0.15)	DATE	DRAWN BY
X.XX±.05	01/JUL/13	CHERRY

1	Category	WF-Water	7	Plating	2-Tin Plated
2	Series Number	250-Pitch,2.50mm	8	Material-Resin	2-PA66
3	Distinction No.	02	9	Color-Resin	W1-White
4	Row Option	S-Single Row	10	Packaging	B-PE Bag
5	Circuits	XX			
6	Entry Angle	B-90° Angle			

Ordering Information
 FWF 250 02 - S XX B 2 W1 B

ITEM NO.	DATE	APPROVE BY
FWF25002	01/JUL/13	FRANK
FWF25002-SXXB2W1B	01/JUL/13	JACOB
FWF25002	DATE	DRAWN BY
FWF25002	01/JUL/13	CHERRY
TITLE	DATE	APPROVE BY
Wire to Board (Water)	01/JUL/13	JACOB
Wire to Board (Water)	DATE	DRAWN BY
Pitch 2.5mm 90° Angle (DIP)	01/JUL/13	CHERRY
REV 1	DATE	APPROVE BY
REV 1	01/JUL/13	JACOB
SHEET NO. 1/2	DATE	DRAWN BY
SHEET NO. 1/2	01/JUL/13	CHERRY

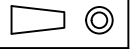
TXGR
 Leader Of Industry

THIS DRAWING CONTAINS INFORMATION THAT IS PROPRIETARY TO TXGA INDUSTRIAL ELECTRONICS(SZ)CO.,LTD AND SHOULD NOT BE USED WITHOUT WRITTEN PERMISSION

REV	LOCATIONS	DESCRIPTION	DATE	REVISER	APPD

Circuits (n)	Part No.	Dimensions(in/mm)	
		A	B
2	FWF25002-S02B22W1B	.098(2.50)	.295(7.50)
3	FWF25002-S03B22W1B	.197(5.00)	.394(10.00)
4	FWF25002-S04B22W1B	.295(7.50)	.492(12.50)
5	FWF25002-S05B22W1B	.394(10.00)	.591(15.00)
6	FWF25002-S06B22W1B	.492(12.50)	.689(17.50)
7	FWF25002-S07B22W1B	.591(15.00)	.787(20.00)
8	FWF25002-S08B22W1B	.689(17.50)	.886(22.50)
9	FWF25002-S09B22W1B	.787(20.00)	.984(25.00)
10	FWF25002-S10B22W1B	.886(22.50)	1.083(27.50)
11	FWF25002-S11B22W1B	.984(25.00)	1.181(30.00)
12	FWF25002-S12B22W1B	1.083(27.50)	1.278(32.50)
13	FWF25002-S13B22W1B	1.181(30.00)	1.378(35.00)

Material and Plating : Housing PA66 UL94V-2 , Tin Plated.



THIRD ANGLE PROJECTION

DESIGN UNITS Inch (metric)

SCALE 5:1 A4

GENERAL TOLERANCES (UNLESS SPECIFIED)
 APPROVE BY FRANK DATE 01/JUL/13
 CHECKED BY JACOB DATE 01/JUL/13
 DRAWN BY CHERRY DATE 01/JUL/13

X±.012(0.30)
 X±.008(0.20)
 X±.006(0.15)
 X±.004(0.10)
 .XXX±0.5

PART NO. FWF25002-SXXB22W1B
 ITEM NO. FWF25002

TITLE Wire to Board (Water)
 Pitch 2.5mm 90° Angle (DIP)

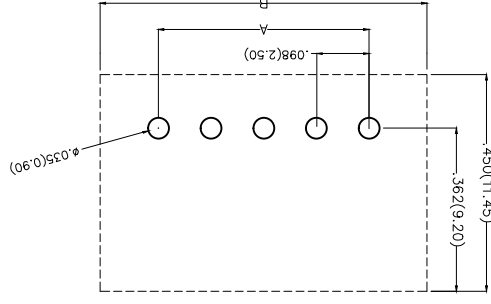
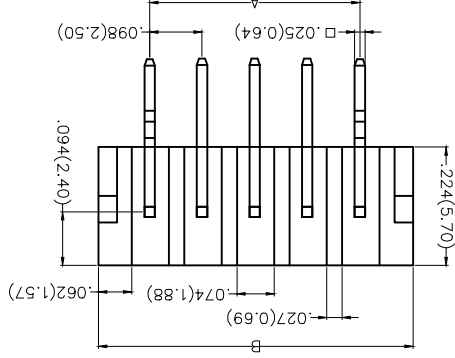
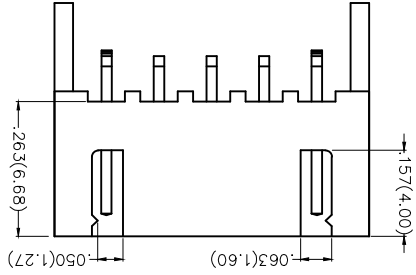
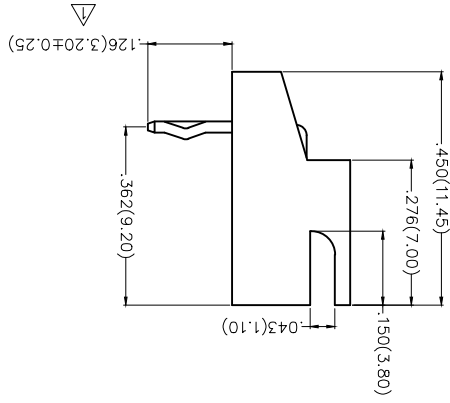
REV 1 SHEET NO. 2/2

Leader Of Industry
TXGA

THIS DRAWING CONTAINS INFORMATION THAT IS PROPRIETARY TO TXGA INDUSTRIAL ELECTRONICS(SZ)CO.,LTD AND SHOULD NOT BE USED WITHOUT WRITTEN PERMISSION

REV	LOCATIONS	DESCRIPTION	DATE	REWSEER	APPD
1	▽	ADD DIM	23/Oct/15	KEVIN	CHERY

Electrical
 Current Rating: 3.0A AC(rms)/DC
 Voltage Rating: 250V AC(rms)/DC
 Contact Resistance: 20 mΩ Max
 Insulation Resistance: 1000 MΩ MIN
 Withstanding Voltage: 1000V AC r.m.s
 Temperature Range—Operating: -25°C~+85°C
 Material and Plating
 Housing: PA6T(UL 94V-0)
 Contact Pin: Brass
 Plating: Tin Plated



Recommended P.C.Board Layout

THIRD ANGLE PROJECTION	DESIGN UNITS Inch (metric)	SCALE 5:1 A4
------------------------	----------------------------	--------------

GENERAL TOLERANCES (UNLESS SPECIFIED)	CHECKED BY X.F.5	DATE 01/JUL/13
	DRAWN BY JACOB	DATE 01/JUL/13
	APPROVE BY FRANK	DATE 01/JUL/13

PART NO. FWF25002-SXXB24W5B	ITEM NO. FWF25002
-----------------------------	-------------------



THIS DRAWING CONTAINS INFORMATION THAT IS PROPRIETARY TO TXGA INDUSTRIAL ELECTRONICS(SZ)CO.,LTD AND SHOULD NOT BE USED WITHOUT WRITTEN PERMISSION	
REV 1	SHEET NO. 1/2

Ordering Information
 FWF 250 02 - S XX B 2 4 W5 B
 1 Category 2 Series Number 3 Distinction No. 4 Row Option 5 Circuits 6 Entry Angle
 7 Plating 8 Material-Resin 9 Color-Resin 10 Packaging

1	Category	FWF-Wafer
2	Series Number	250-Pitch2.50mm
3	Distinction No.	02
4	Row Option	S-Single Row
5	Circuits	XX
6	Entry Angle	B-90° Angle
7	Plating	2-Tin Plated
8	Material-Resin	4-PA6T
9	Color-Resin	W5-White
10	Packaging	B-PE Bag

X-ON Electronics

Largest Supplier of Electrical and Electronic Components

Click to view similar products for [Headers & Wire Housings](#) category:

Click to view products by [TXGA](#) manufacturer:

Other Similar products are found below :

[95000-104TRLF](#) [10135584-644402LF](#) [DF62W-EP2022PCA](#) [95000-106TRLF](#) [DF62W-2022SCA](#) [DF62W-EP2022PC](#) [2203348](#) [DF62W-2022SC](#) [1084018](#) [1029039](#) [1084017](#) [802-10-012-10-002000](#) [1112640](#) [1112639](#) [891-007-9SS-BST1T](#) [000-34000](#) [0008550134](#) [0009482033](#) [0009507031](#) [57102-F02-18ULF](#) [57102-S06-03LF](#) [57202-S52-04LF](#) [PCN6-15S-2.5E](#) [0039019024](#) [58102-G61-06LF](#) [582553-1](#) [0009485154](#) [0009508121](#) [0022285053](#) [0050291907](#) [018731A](#) [LY20-4P-DT1-P1E-BR](#) [02.125.8002.8](#) [60101931](#) [60598-1 \(Cut Strip\)](#) [M1625-3R/100](#) [61062-3](#) [61082-181009](#) [CSU011177004](#) [636-1427](#) [638009-1](#) [641938-9](#) [641991-4](#) [644168-1](#) [644827-2](#) [647662-1](#) [65039-019ELF](#) [65692-001LF](#) [65781-018](#) [65781-047](#)