

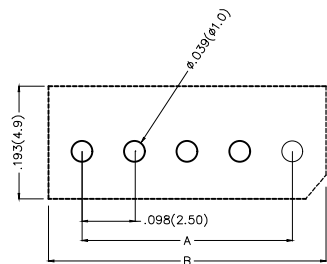
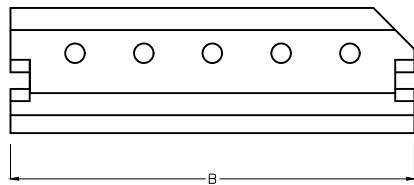
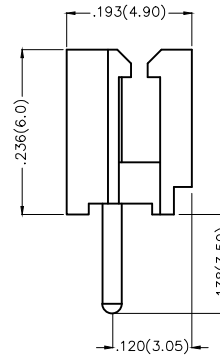
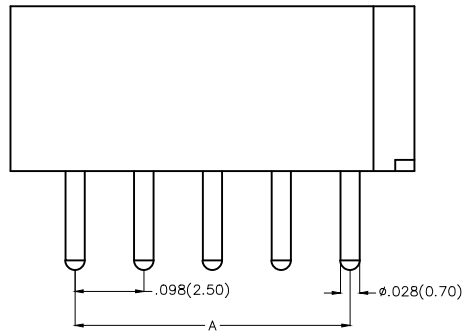
REV	LOCATIONS	DESCRIPTION	DATE	REVISER	APPD

**Electrical**

Current Rating: 3.0A AC(rms)/DC  
Voltage Rating: 250V AC(rms)/DC  
Contact Resistance: 20 mΩ Max  
Insulation Resistance: 1000 MΩ MIN  
Withstanding Voltage: 1000V AC r.m.s  
Temperature Range—Operating: -25°C ~ +85°C

**Material and Plating**

Housing: PA66( UL 94V-2)  
Contact Pin: Brass  
Plating: Tin Plated



Recommended P.C.Board Layout

**Ordering Information**



FWF 250 03 - S XX S 2 2 W5 B  
1 2 3 4 5 6 7 8 9 10

1 <u>Category</u> FWF-Wafer	2 <u>Series Number</u> 250-Pitch2.5mm	3 <u>Distinction No.</u> 03	4 <u>Row Option</u> S-Single Row	5 <u>Circuits</u> XX	6 <u>Entry Angle</u> S-180° Vertical
7 <u>Plating</u> 2-Tin Plated	8 <u>Material-Resin</u> 2-PA66	9 <u>Color-Resin</u> W5-White	10 <u>Packaging</u> B-PE Bag		

 THIRD ANGLE PROJECTION	GENERAL TOLERANCES (UNLESS SPECIFIED)		APPROVE BY FRANK	DATE 01/JUL/13	PART NO. FWF25003-SXXS22W5B	ITEM NO. FWF25003	 Leader Of Industry	
	DESIGN UNITS Inch (metric)	X.±.012(0.30)	X.±5°	CHECKED BY JACOB	DATE 01/JUL/13	TITLE Wire to Board (Wafer) Pitch 2.5mm 180° Vertical (DIP)		REV 0
SCALE 5:1	SIZE A4	X.XX±.006(0.15)	.XX'±1°	DRAWN BY CHERRY	DATE 01/JUL/13	THIS DRAWING CONTAINS INFORMATION THAT IS PROPRIETARY TO TXGA INDUSTRIAL ELECTRONICS(S.Z)CO.,LTD AND SHOULD NOT BE USED WITHOUT WRITTEN PERMISSION		

REV	LOCATIONS	DESCRIPTION	DATE	REVISER	APPD

Circuits (n)	Part No.	Dimensions(in/mm)	
		A	B
2	FWF25003-S02S22W5B	.098(2.50)	.295(7.50)
3	FWF25003-S03S22W5B	.197(5.00)	.394(10.00)
4	FWF25003-S04S22W5B	.295(7.50)	.492(12.50)
5	FWF25003-S05S22W5B	.394(10.00)	.591(15.00)
6	FWF25003-S06S22W5B	.492(12.50)	.689(17.50)
7	FWF25003-S07S22W5B	.591(15.00)	.787(20.00)
8	FWF25003-S08S22W5B	.689(17.50)	.886(22.50)
9	FWF25003-S09S22W5B	.787(20.00)	.984(25.00)
10	FWF25003-S10S22W5B	.886(22.50)	1.083(27.50)
11	FWF25003-S11S22W5B	.984(25.00)	1.181(30.00)
12	FWF25003-S12S22W5B	1.083(27.50)	1.024(32.50)

 THIRD ANGLE PROJECTION	GENERAL TOLERANCES (UNLESS SPECIFIED)		APPROVE BY	DATE	PART NO.	ITEM NO.	 Leader Of Industry
	X.±.012(0.30)	X.±5'	FRANK	01/JUL/13	FWF25003-SXXS22W5B	FWF25003	
DESIGN UNITS Inch (metric)	X.X±.008(0.20)	.X±2'	CHECKED BY	DATE	TITLE		REV 0    SHEET NO. 1/1
SCALE	X.XX±.006(0.15)	.XX±1'	JACOB	01/JUL/13	Wire to Board (Wafer) Pitch 2.5mm 180° Vertical (DIP)		
5:1	X.XXX±.004(0.10)	.XXX±0.5'	DRAWN BY	DATE	THIS DRAWING CONTAINS INFORMATION THAT IS PROPRIETARY TO TXGA INDUSTRIAL ELECTRONICS(S.Z)CO.,LTD AND SHOULD NOT BE USED WITHOUT WRITTEN PERMISSION		
A4			CHERRY	01/JUL/13			

## X-ON Electronics

Largest Supplier of Electrical and Electronic Components

*Click to view similar products for [Headers & Wire Housings](#) category:*

*Click to view products by [TXGA](#) manufacturer:*

Other Similar products are found below :

[0015917161](#) [0022155065](#) [57102-F02-18ULF](#) [58102-G61-06LF](#) [582553-1](#) [01.001.5753.1](#) [0050291907](#) [02.125.8002.8](#) [609-3404](#) [61062-3](#)  
[CSU011177004](#) [622-0430](#) [622-3653LF](#) [63453-116](#) [636-1030](#) [636-1427](#) [636-3427](#) [636-4007](#) [641938-9](#) [65495-038](#) [65692-001LF](#) [65781-018](#)  
[65781-047](#) [65817-010LF](#) [65817-015LF](#) [67095-007LF](#) [67601157](#) [68631-112](#) [68645-018](#) [699319-000](#) [70.362.1628.0](#) [70-4210](#) [70-4226B](#) [70-](#)  
[4853B](#) [71.350.2428.0](#) [733-134](#) [733-162](#) [760-3052](#) [MHR-64-VUAL](#) [80.063.4001.1](#) [800-90-001-10-001000](#) [801-43-002-10-013000](#)  
[801-43-006-10-002000](#) [803-43-024-10-001000](#) [803-93-012-10-001000](#) [8-1437020-4](#) [819-22-004-30-001101](#) [820-22-006-30-001101](#)  
[820-22-008-30-001101](#) [821-22-002-10-001101](#)