

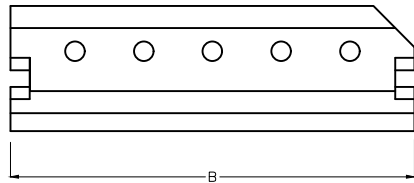
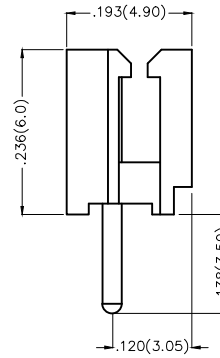
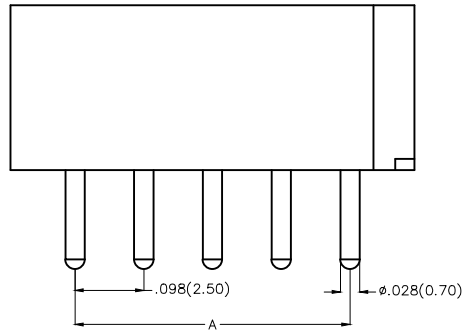
| REV | LOCATIONS | DESCRIPTION | DATE | REVISER | APPD |
|-----|-----------|-------------|------|---------|------|
| | | | | | |

Electrical

Current Rating: 3.0A AC(rms)/DC
Voltage Rating: 250V AC(rms)/DC
Contact Resistance: 20 mΩ Max
Insulation Resistance: 1000 MΩ MIN
Withstanding Voltage: 1000V AC r.m.s
Temperature Range—Operating: -25°C ~ +85°C

Material and Plating

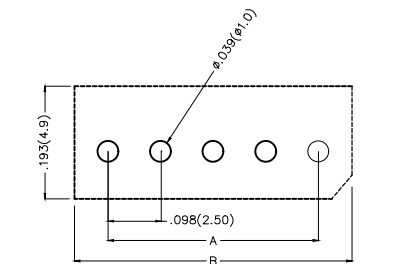
Housing: PA66(UL 94V-2)
Contact Pin: Brass
Plating: Tin Plated



Ordering Information

FWF 250 03 - S XX S 2 2 W5 B
1 2 3 4 5 6 7 8 9 10

| | | | | | | | | | | | |
|---|--------------------------------|---|--|---|--------------------------------|----|-----------------------------------|---|-----------------------|---|---------------------------------------|
| 1 | <u>Category</u> FWF-Wafer | 2 | <u>Series Number</u> 250-Pitch2.5mm | 3 | <u>Distinction No.</u> 03 | 4 | <u>Row Option</u> S-Single Row | 5 | <u>Circuits</u> XX | 6 | <u>Entry Angle</u> S-180° Vertical |
| 7 | <u>Plating</u> 2-Tin Plated | 8 | <u>Material-Resin</u> 2-PA66 | 9 | <u>Color-Resin</u> W5-White | 10 | <u>Packaging</u> B-PE Bag | | | | |





Recommended P.C.Board Layout

| | | | | | | | | |
|-------------------------------|--|-------------------------------------|-----------------------|---------------------|--------------------------------|--|------------------------|-------|
| THIRD ANGLE PROJECTION | GENERAL TOLERANCES (UNLESS SPECIFIED) | | APPROVE BY FRANK | DATE 01/JUL/13 | PART NO. FWF25003-SXXS22W5B | ITEM NO. FWF25003 | Leader Of Industry | |
| | DESIGN UNITS Inch (metric) | X.±.012(0.30) X.XX±.008(0.20) | X.±5° .X'±2° | CHECKED BY JACOB | DATE 01/JUL/13 | TITLE Wire to Board (Wafer) Pitch 2.5mm 180° Vertical (DIP) | | REV 0 |
| SCALE 5:1 | SIZE A4 | X.XX±.006(0.15) X.XXX±.004(0.10) | .XX'±1° .XXX'±0.5° | DRAWN BY CHERRY | DATE 01/JUL/13 | THIS DRAWING CONTAINS INFORMATION THAT IS PROPRIETARY TO TXGA INDUSTRIAL ELECTRONICS(S.Z)CO.,LTD AND SHOULD NOT BE USED WITHOUT WRITTEN PERMISSION | | |

| REV | LOCATIONS | DESCRIPTION | DATE | REVISER | APPD |
|-----|-----------|-------------|------|---------|------|
| | | | | | |

| Circuits (n) | Part No. | Dimensions(in/mm) | |
|-----------------|--------------------|-------------------|--------------|
| | | A | B |
| 2 | FWF25003-S02S22W5B | .098(2.50) | .295(7.50) |
| 3 | FWF25003-S03S22W5B | .197(5.00) | .394(10.00) |
| 4 | FWF25003-S04S22W5B | .295(7.50) | .492(12.50) |
| 5 | FWF25003-S05S22W5B | .394(10.00) | .591(15.00) |
| 6 | FWF25003-S06S22W5B | .492(12.50) | .689(17.50) |
| 7 | FWF25003-S07S22W5B | .591(15.00) | .787(20.00) |
| 8 | FWF25003-S08S22W5B | .689(17.50) | .886(22.50) |
| 9 | FWF25003-S09S22W5B | .787(20.00) | .984(25.00) |
| 10 | FWF25003-S10S22W5B | .886(22.50) | 1.083(27.50) |
| 11 | FWF25003-S11S22W5B | .984(25.00) | 1.181(30.00) |
| 12 | FWF25003-S12S22W5B | 1.083(27.50) | 1.024(32.50) |

| | | | | | | | |
|---|--|------------------|---------------------|-------------------|--|----------------------|---|
|  THIRD ANGLE PROJECTION | GENERAL TOLERANCES (UNLESS SPECIFIED) | | APPROVE BY FRANK | DATE 01/JUL/13 | PART NO. FWF25003-SXXS22W5B | ITEM NO. FWF25003 |  Leader Of Industry |
| | X.±.012(0.30) | X.±5' | CHECKED BY JACOB | DATE 01/JUL/13 | TITLE Wire to Board (Wafer) Pitch 2.5mm 180° Vertical (DIP) | | |
| DESIGN UNITS Inch (metric) | X.XX±.008(0.20) | .X'±2' | DRAWN BY CHERRY | DATE 01/JUL/13 | THIS DRAWING CONTAINS INFORMATION THAT IS PROPRIETARY TO TXGA INDUSTRIAL ELECTRONICS(S.Z)CO.,LTD AND SHOULD NOT BE USED WITHOUT WRITTEN PERMISSION | | |
| SCALE 5:1 | SIZE A4 | X.XX±.006(0.15) | | | | | |
| | | X.XXX±.004(0.10) | | | | | |

X-ON Electronics

Largest Supplier of Electrical and Electronic Components

Click to view similar products for [Headers & Wire Housings](#) category:

Click to view products by [TXGA](#) manufacturer:

Other Similar products are found below :

[0015917161](#) [0022155065](#) [57102-F02-18ULF](#) [58102-G61-06LF](#) [582553-1](#) [01.001.5753.1](#) [0050291907](#) [02.125.8002.8](#) [609-3404](#) [61062-3](#)
[CSU011177004](#) [622-0430](#) [622-3653LF](#) [63453-116](#) [636-1030](#) [636-1427](#) [636-3427](#) [636-4007](#) [641938-9](#) [65495-038](#) [65692-001LF](#) [65781-018](#)
[65781-047](#) [65817-010LF](#) [65817-015LF](#) [67095-007LF](#) [67601157](#) [68631-112](#) [68645-018](#) [699319-000](#) [70.362.1628.0](#) [70-4210](#) [70-4226B](#) [70-](#)
[4853B](#) [71.350.2428.0](#) [733-134](#) [733-162](#) [760-3052](#) [MHR-64-VUAL](#) [80.063.4001.1](#) [800-90-001-10-001000](#) [801-43-002-10-013000](#)
[801-43-006-10-002000](#) [803-43-024-10-001000](#) [803-93-012-10-001000](#) [8-1437020-4](#) [819-22-004-30-001101](#) [820-22-006-30-001101](#)
[820-22-008-30-001101](#) [821-22-002-10-001101](#)