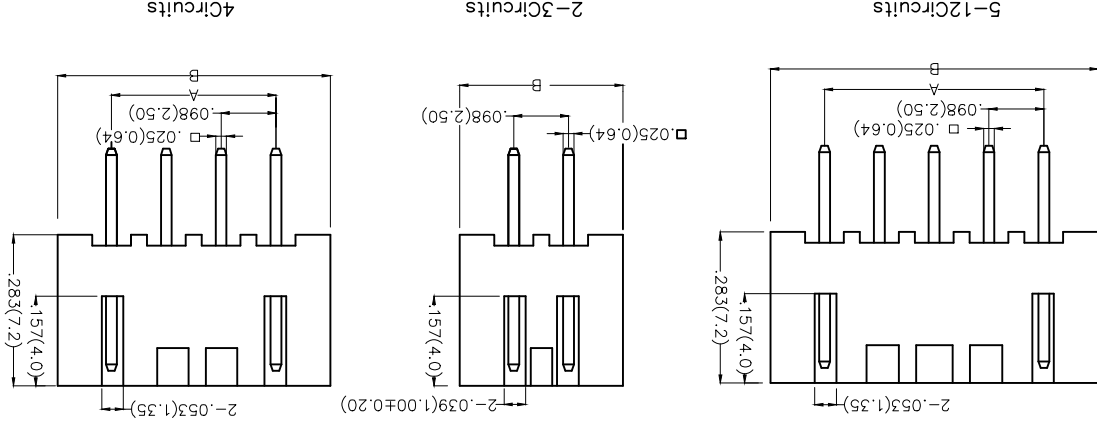
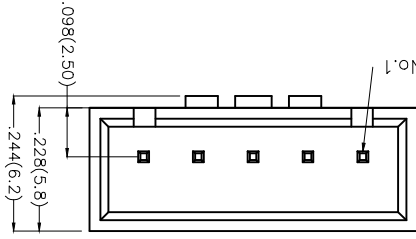
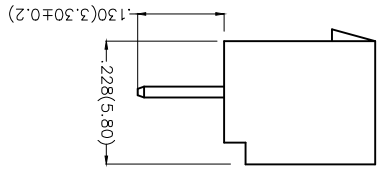


REV	LOCATIONS	DESCRIPTION	DATE	REVISER	APPD

Electrical
 Current Rating: 3.0A AC(rms)/DC
 Voltage Rating: 250V AC(rms)/DC
 Contact Resistance: 20 mΩ Max
 Insulation Resistance: 1000 MΩ MIN
 Withstanding Voltage: 1000V AC r.m.s
 Temperature Range-Operating: -25°C~+85°C
 Material and Plating
 Housing: P66 (UL 94V-2)
 Contact Pin: Brass
 Plating: Tin Plated



Ordering Information

1	Category	FWF-Water
2	Series Number	250-Pitch 2.5mm
3	Distinction No.	12
4	Row Option	S-Single Row
5	Circuits	XX
6	Entry Angle	S-180° Vertical
7	Plating	2-Tin Plated
8	Material-Resin	2-P66
9	Color-Resin	W1-White R1-Red N1-Green ... U1-Blue
10	Packaging	B-PE Bag

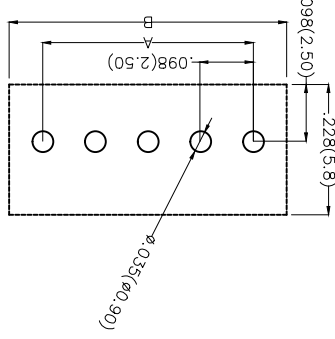
DATE	01/MAY/14
CHECKED BY	FRANK
APPROVE BY	JACOB
DATE	01/MAY/14
DRAWN BY	CHEERRY
SCALE	5:1
SIZE	A4

TXGR
 Leader Of Industry

GENERAL TOLERANCES (UNLESS SPECIFIED)	THIRD ANGLE PROJECTION	DESIGN UNITS Inch (metric)	SCALE
X.±.012(0.30)		X.±.008(0.20)	5:1
X.±.006(0.15)		X.±.004(0.10)	A4
X.±.004(0.10)			

THIS DRAWING CONTAINS INFORMATION THAT IS PROPRIETARY TO TXGA INDUSTRIAL ELECTRONICS(SZ)CO.,LTD AND SHOULD NOT BE USED WITHOUT WRITTEN PERMISSION

Recommended P.C.Board Layout



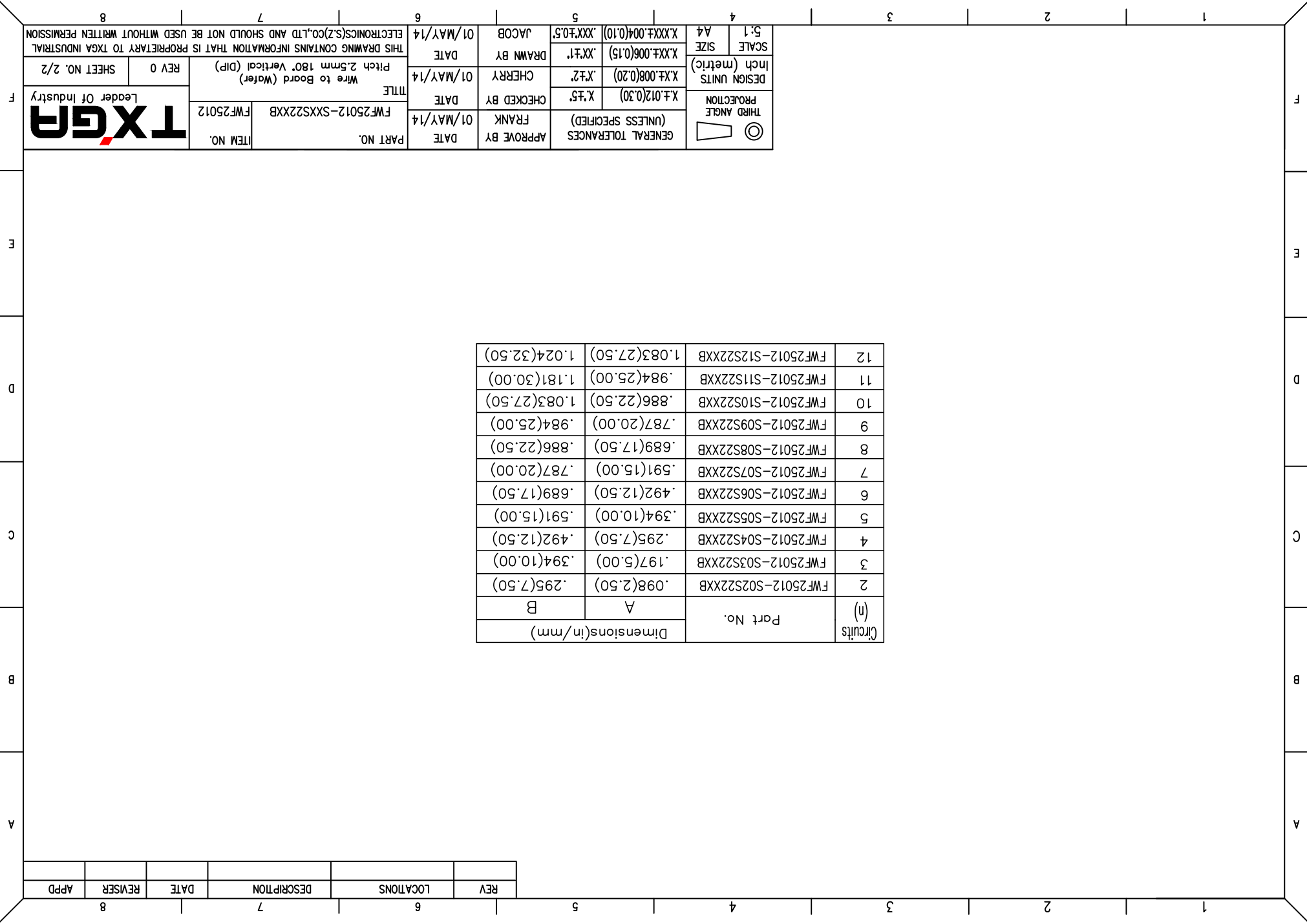
REV	LOCATIONS	DESCRIPTION	DATE	REVISER	APPD

Circuits (n)	Part No.	Dimensions(in/mm)	
		A	B
2	FWF25012-S02S22XXB	.098(2.50)	.295(7.50)
3	FWF25012-S03S22XXB	.197(5.00)	.394(10.00)
4	FWF25012-S04S22XXB	.295(7.50)	.492(12.50)
5	FWF25012-S05S22XXB	.394(10.00)	.591(15.00)
6	FWF25012-S06S22XXB	.492(12.50)	.689(17.50)
7	FWF25012-S07S22XXB	.591(15.00)	.787(20.00)
8	FWF25012-S08S22XXB	.689(17.50)	.886(22.50)
9	FWF25012-S09S22XXB	.787(20.00)	.984(25.00)
10	FWF25012-S10S22XXB	.886(22.50)	1.083(27.50)
11	FWF25012-S11S22XXB	.984(25.00)	1.181(30.00)
12	FWF25012-S12S22XXB	1.083(27.50)	1.279(32.50)

THIRD ANGLE PROJECTION	
DESIGN UNITS	X.±.012(0.30)
Inch (metric)	X.±.008(0.20)
SCALE	5:1
SIZE	A4

GENERAL TOLERANCES (UNLESS SPECIFIED)	APPROVE BY	DATE	PART NO.
X.±.5	FRANK	01/MAY/14	FWF25012-SXXS22XXB
X.±.2	CHECKED BY	DATE	TITLE
X.±.1	CHEERY	01/MAY/14	Wire to Board (Water)
X.±.006(0.15)	DRAWN BY	DATE	ITEM NO.
X.±.004(0.10)	JACOB	01/MAY/14	FWF25012

THIS DRAWING CONTAINS INFORMATION THAT IS PROPRIETARY TO TXGA INDUSTRIAL ELECTRONICS(SZ)CO.,LTD AND SHOULD NOT BE USED WITHOUT WRITTEN PERMISSION	
REV 0	SHEET NO. 2/2



X-ON Electronics

Largest Supplier of Electrical and Electronic Components

Click to view similar products for [Headers & Wire Housings](#) category:

Click to view products by [TXGA](#) manufacturer:

Other Similar products are found below :

[95000-104TRLF](#) [10135584-644402LF](#) [DF62W-EP2022PCA](#) [95000-106TRLF](#) [DF62W-2022SCA](#) [DF62W-EP2022PC](#) [2203348](#) [DF62W-2022SC](#) [1084018](#) [1029039](#) [1084017](#) [802-10-012-10-002000](#) [1112640](#) [1112639](#) [891-007-9SS-BST1T](#) [000-34000](#) [0008550134](#) [0009482033](#) [0009507031](#) [57102-F02-18ULF](#) [57102-S06-03LF](#) [57202-S52-04LF](#) [PCN6-15S-2.5E](#) [0039019024](#) [58102-G61-06LF](#) [582553-1](#) [0009485154](#) [0009508121](#) [0022285053](#) [0050291907](#) [018731A](#) [LY20-4P-DT1-P1E-BR](#) [02.125.8002.8](#) [60101931](#) [60598-1 \(Cut Strip\)](#) [M1625-3R/100](#) [61062-3](#) [61082-181009](#) [CSU011177004](#) [636-1427](#) [638009-1](#) [641938-9](#) [641991-4](#) [644168-1](#) [644827-2](#) [647662-1](#) [65039-019ELF](#) [65692-001LF](#) [65781-018](#) [65781-047](#)