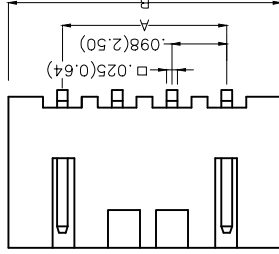
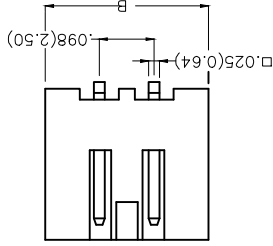
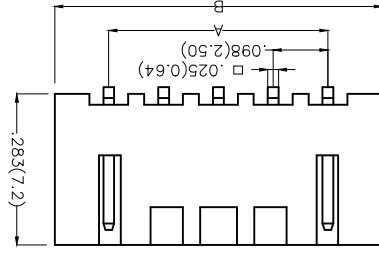
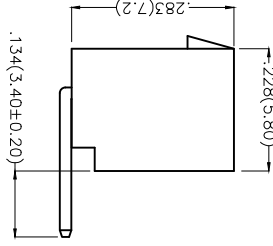
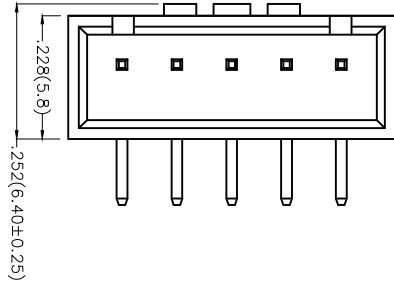


REV	LOCATIONS	DESCRIPTION	DATE	REVISER	APPD

Electrical
 Current Rating: 3.0A AC(rms)/DC
 Voltage Rating: 250V AC(rms)/DC
 Contact Resistance: 20 mΩ Max
 Insulation Resistance: 1000 MΩ MIN
 Withstanding Voltage: 1000V AC r.m.s
 Temperature Range—Operating: -25°C~+85°C
 Material and Plating
 Housing: PA66 (UL 94V-2)
 Contact Pin: Brass
 Plating: Tin Plated



Ordering Information

FWF 250 13 — S XX B 2 2 W1 B
 1 2 3 4 5 6 7 8 9 10

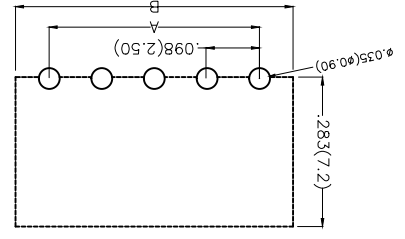
1	Category	FWF—Water	6	Entry Angle	B—90° Angle
2	Series Number	250—Pitch 2.5mm	3	Distinction No.	13
3	Row Option	S—Single Row	4	Circuits	XX
4	Packaging	B—PE Bag	5	Color—Resin	W1—White
7	Plating	2—Tin Plated	8	Material—Resin	2—PA66

APPROVE BY	DATE	PART NO.	ITEM NO.
FRANK	01/JUL/13	FWF25013-SXXB22W1B	FWF25013
CHECKED BY	DATE	TITLE	
JACOB	01/JUL/13	Wire to Board (Water)	
DRAWN BY	DATE	Pitch 2.5mm 90° Angle (DIP)	
CHERRY	01/JUL/13		

GENERAL TOLERANCES (UNLESS SPECIFIED)	APPROVE BY	DATE	ITEM NO.
X.±.012(0.30)	FRANK	01/JUL/13	FWF25013
X.XX±.008(0.20)	CHECKED BY	DATE	TITLE
X.XX±.006(0.15)	JACOB	01/JUL/13	Wire to Board (Water)
X.XX±.004(0.10)	DRAWN BY	DATE	Pitch 2.5mm 90° Angle (DIP)
A4	CHERRY	01/JUL/13	


TXGR
 Leader Of Industry
 REV 0 SHEET NO. 1/2
 THIS DRAWING CONTAINS INFORMATION THAT IS PROPRIETARY TO TXGA INDUSTRIAL ELECTRONICS(S)ZCO.,LTD AND SHOULD NOT BE USED WITHOUT WRITTEN PERMISSION

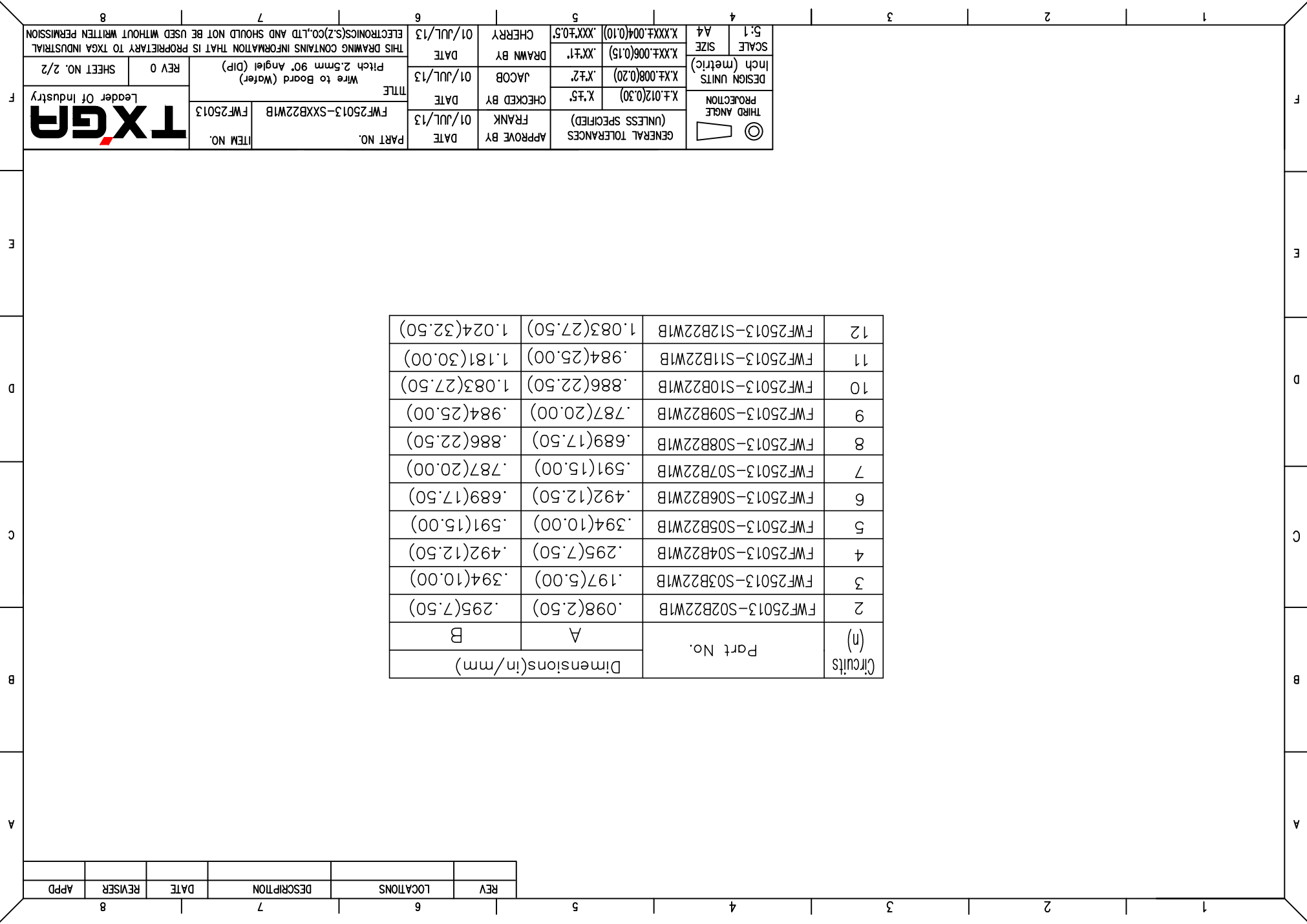
Recommended P.C.Board Layout



REV	LOCATIONS	DESCRIPTION	DATE	REVISER	APPD

Circuits (n)	Part No.	Dimensions(in/mm)	
2	FWF25013-S02B22W1B	.098(2.50)	.295(7.50)
3	FWF25013-S03B22W1B	.197(5.00)	.394(10.00)
4	FWF25013-S04B22W1B	.295(7.50)	.492(12.50)
5	FWF25013-S05B22W1B	.394(10.00)	.591(15.00)
6	FWF25013-S06B22W1B	.492(12.50)	.689(17.50)
7	FWF25013-S07B22W1B	.591(15.00)	.787(20.00)
8	FWF25013-S08B22W1B	.689(17.50)	.886(22.50)
9	FWF25013-S09B22W1B	.787(20.00)	.984(25.00)
10	FWF25013-S10B22W1B	.886(22.50)	1.083(27.50)
11	FWF25013-S11B22W1B	.984(25.00)	1.181(30.00)
12	FWF25013-S12B22W1B	1.083(27.50)	1.279(32.50)

 THIRD ANGLE PROJECTION		GENERAL TOLERANCES (UNLESS SPECIFIED) X.±.012(0.30) X.±.5	APPROVE BY FRANK	DATE 01/JUL/13	PART NO. FWF25013-SXXB22W1B ITEM NO. FWF25013	TITLE Wire to Board (Water) Pitch 2.5mm 90° Angle (DIP)	REV 0 SHEET NO. 2/2	THIS DRAWING CONTAINS INFORMATION THAT IS PROPRIETARY TO TXGA INDUSTRIAL ELECTRONICS(SZ)CO.,LTD AND SHOULD NOT BE USED WITHOUT WRITTEN PERMISSION
DESIGN UNITS Inch (metric)	X.±.008(0.20) X.±.2	X.±.006(0.15) X.±.1	DRAWN BY JACOB	DATE 01/JUL/13				
SCALE 5:1 A4	X.XXX±.004(0.10) .XXX±.05	X.XXX±.004(0.10) .XXX±.05	CHECKED BY FRANK	DATE 01/JUL/13				
SCALE 5:1 A4	X.XXX±.004(0.10) .XXX±.05	X.XXX±.004(0.10) .XXX±.05	DRAWN BY CHERRY	DATE 01/JUL/13				



X-ON Electronics

Largest Supplier of Electrical and Electronic Components

Click to view similar products for [Headers & Wire Housings](#) category:

Click to view products by [TXGA](#) manufacturer:

Other Similar products are found below :

[95000-104TRLF](#) [10135584-644402LF](#) [DF62W-EP2022PCA](#) [95000-106TRLF](#) [DF62W-2022SCA](#) [DF62W-EP2022PC](#) [2203348](#) [DF62W-2022SC](#) [1084018](#) [1029039](#) [1084017](#) [802-10-012-10-002000](#) [1112640](#) [1112639](#) [891-007-9SS-BST1T](#) [000-34000](#) [0008550134](#) [0009482033](#) [0009507031](#) [57102-F02-18ULF](#) [57102-S06-03LF](#) [57202-S52-04LF](#) [PCN6-15S-2.5E](#) [0039019024](#) [58102-G61-06LF](#) [582553-1](#) [0009485154](#) [0009508121](#) [0022285053](#) [0050291907](#) [018731A](#) [LY20-4P-DT1-P1E-BR](#) [02.125.8002.8](#) [60101931](#) [60598-1 \(Cut Strip\)](#) [M1625-3R/100](#) [61062-3](#) [61082-181009](#) [CSU011177004](#) [636-1427](#) [638009-1](#) [641938-9](#) [641991-4](#) [644168-1](#) [644827-2](#) [647662-1](#) [65039-019ELF](#) [65692-001LF](#) [65781-018](#) [65781-047](#)