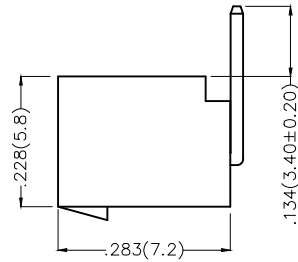
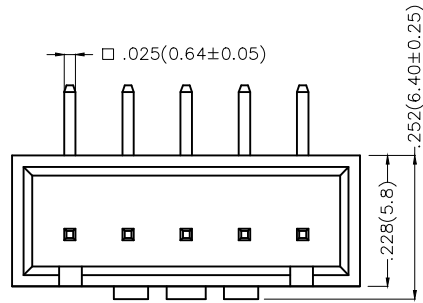
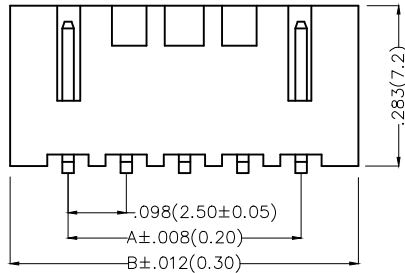


REV	LOCATIONS	DESCRIPTION	DATE	REVISER	APPD
1	△	Dimensional tolerance change	08/MAY/21	KATE	CHERRY

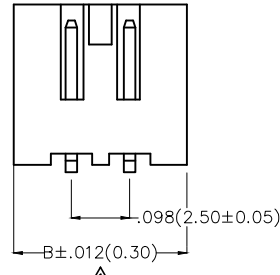


Electrical

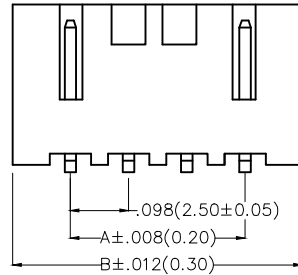
Current Rating: 3.0A AC(rms)/DC
Voltage Rating: 250V AC(rms)/DC
Contact Resistance: 20 mΩ Max
Insulation Resistance: 1000 MΩ MIN
Withstanding Voltage: 1000V AC r.m.s
Temperature Range—Operating: -25°C~+85°C
Material and Plating
Housing: PA66(UL 94V-2)
Contact Pin: Brass
Plating: Tin Plated



5-13Circuits



2-3Circuits

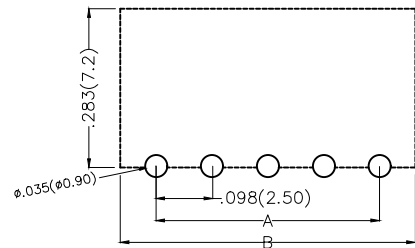


4Circuits

Ordering Information

FWF 250 13 — S XX B 2 2 W1 B
1 2 3 4 5 6 7 8 9 10

1	Category FWF—Wafer	2	Series Number 250—Pitch2.5mm	3	Distinction No. 13	4	Row Option S—Single Row	5	Circuits XX	6	Entry Angle B—90° Angle
7	Plating 2—Tin Plated	8	Material—Resin 2—PA66	9	Color—Resin W1—White	10	Packaging B—PE Bag				



Recommended P.C.Board Layout

 THIRD ANGLE PROJECTION	GENERAL TOLERANCES (UNLESS SPECIFIED)		APPROVE BY FRANK	DATE 01/JUL/13	PART NO. FWF25013—SXXB22W1B	ITEM NO. FWF25013	 Leader Of Industry
	DESIGN UNITS Inch (metric)	X.±.012(0.30) X.X±.008(0.20)	X.±5° .X±2°	CHECKED BY JACOB	DATE 01/JUL/13	TITLE Wire to Board (Wafer) Pitch 2.5mm 90° Angled (DIP)	
SCALE 5:1	SIZE A4	X.XX±.006(0.15) X.XXX±.004(0.10)	.XX±1° .XXX±0.5°	DRAWN BY CHERRY	DATE 01/JUL/13	THIS DRAWING CONTAINS INFORMATION THAT IS PROPRIETARY TO TXGA INDUSTRIAL ELECTRONICS(S.Z)CO.,LTD AND SHOULD NOT BE USED WITHOUT WRITTEN PERMISSION	

REV 1 SHEET NO. 1/2

1 2 3 4 5 6 7 8

REV	LOCATIONS	DESCRIPTION	DATE	REVISER	APPD

A

A

B

B

C

C

D

D

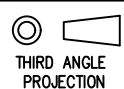

E

E

F

F

Circuits (n)	Part No.	Dimensions(in/mm)	
		A	B
2	FWF25013-S02B22W1B	.098(2.50)	.295(7.50)
3	FWF25013-S03B22W1B	.197(5.00)	.394(10.00)
4	FWF25013-S04B22W1B	.295(7.50)	.492(12.50)
5	FWF25013-S05B22W1B	.394(10.00)	.591(15.00)
6	FWF25013-S06B22W1B	.492(12.50)	.689(17.50)
7	FWF25013-S07B22W1B	.591(15.00)	.787(20.00)
8	FWF25013-S08B22W1B	.689(17.50)	.886(22.50)
9	FWF25013-S09B22W1B	.787(20.00)	.984(25.00)
10	FWF25013-S10B22W1B	.886(22.50)	1.083(27.50)
11	FWF25013-S11B22W1B	.984(25.00)	1.181(30.00)
12	FWF25013-S12B22W1B	1.083(27.50)	1.024(32.50)
13	FWF25013-S13B22W1B	1.181(30.00)	1.378(35.00)

 THIRD ANGLE PROJECTION	GENERAL TOLERANCES (UNLESS SPECIFIED)		APPROVE BY FRANK	DATE 01/JUL/13	PART NO. FWF25013-SXXB22W1B	ITEM NO. FWF25013	 Leader Of Industry			
	DESIGN UNITS Inch (metric)	X.±.012(0.30) X.X±.008(0.20)	X.±5" .X'±2"	CHECKED BY JACOB	DATE 01/JUL/13	TITLE Wire to Board (Wafer) Pitch 2.5mm 90° Angl (DIP)		REV 1	SHEET NO. 2/2	
	SCALE 5:1	SIZE A4	X.XX±.006(0.15) X.XXX±.004(0.10)	DRAWN BY CHERRY	DATE 01/JUL/13	THIS DRAWING CONTAINS INFORMATION THAT IS PROPRIETARY TO TXGA INDUSTRIAL ELECTRONICS(S.Z)CO.,LTD AND SHOULD NOT BE USED WITHOUT WRITTEN PERMISSION				

1 2 3 4 5 6 7 8

X-ON Electronics

Largest Supplier of Electrical and Electronic Components

Click to view similar products for [Headers & Wire Housings](#) category:

Click to view products by [TXGA](#) manufacturer:

Other Similar products are found below :

[0015917161](#) [0022155065](#) [57102-F02-18ULF](#) [58102-G61-06LF](#) [582553-1](#) [01.001.5753.1](#) [0050291907](#) [02.125.8002.8](#) [609-3404](#) [61062-3](#)
[CSU011177004](#) [622-0430](#) [622-3653LF](#) [63453-116](#) [636-1030](#) [636-1427](#) [636-3427](#) [636-4007](#) [641938-9](#) [65495-038](#) [65692-001LF](#) [65781-018](#)
[65781-047](#) [65817-010LF](#) [65817-015LF](#) [67095-007LF](#) [67601157](#) [68631-112](#) [68645-018](#) [699319-000](#) [70.362.1628.0](#) [70-4210](#) [70-4226B](#) [70-](#)
[4853B](#) [71.350.2428.0](#) [733-134](#) [733-162](#) [760-3052](#) [MHR-64-VUAL](#) [80.063.4001.1](#) [800-90-001-10-001000](#) [801-43-002-10-013000](#)
[801-43-006-10-002000](#) [803-43-024-10-001000](#) [803-93-012-10-001000](#) [8-1437020-4](#) [819-22-004-30-001101](#) [820-22-006-30-001101](#)
[820-22-008-30-001101](#) [821-22-002-10-001101](#)