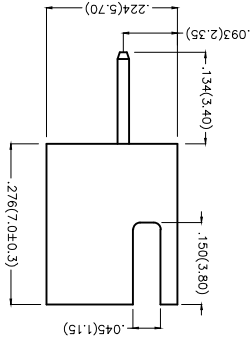
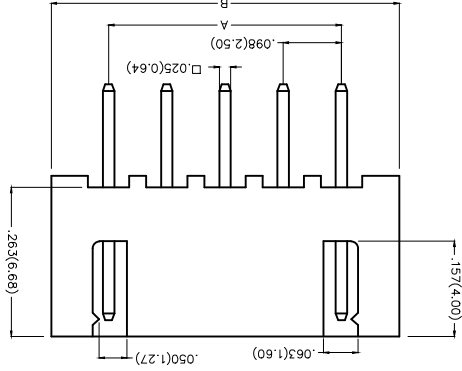
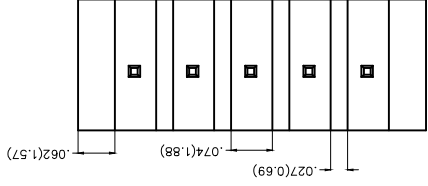
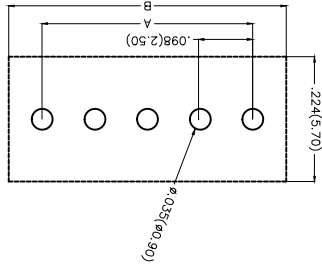


Recommended P.C.Board Layout



**Electrical**  
 Current Rating: 3.0A AC(rms)/DC  
 Voltage Rating: 250V AC(rms)/DC  
 Contact Resistance: 20 m $\Omega$  Max  
 Insulation Resistance: 1000 M $\Omega$  MIN  
 Withstanding Voltage: 1000V AC r.m.s  
 Temperature Range-Operating: -25°C~+85°C  
 Material and Plating  
 Housing: Glass Filled Polyester (UL 94V-2)  
 Contact Pin: Brass  
 Plating: Full gold/ Full tin

Ordering Information

FWF 250 18 - S XX S  
 X X XX B  
 1 2 3 4 5 6 7 8 9 10

- 1 Category | FWF-Water
- 2 Series Number | 250-Pitch 2.50mm
- 3 Distinction No. | 18
- 4 Row Option | Single Row
- 5 Circuits | XX
- 6 Entry Angle | S-180° Vertical
- 7 Plating | 1-Gold Plated  
2-Tin Plated
- 8 Material-Resin | 2-PA66  
4-PA6T
- 9 Color-Resin | W1-White  
W5-White
- 10 Packaging | B-PE Bag

THIRD ANGLE	PROJECTION	X.±.012(0.30)	X.±.7	X.±.5
DESIGN UNITS	Inch (metric)	X.X±.008(0.20)	X.±.2	JACOB
SCALE	SIZE	X.XX±.006(0.15)	.XX±.1	DRAWN BY
5:1	A4	X.XXX±.004(0.10)	.XXX±.0.5	CHERRY

GENERAL TOLERANCES (UNLESS SPECIFIED)	DATE	APPROVE BY	DATE	APPROVE BY
	01/JUL/13	FRANK	01/JUL/13	FRANK
	DATE	CHECKED BY	DATE	CHECKED BY
	01/JUL/13	JACOB	01/JUL/13	JACOB
	DATE	DRAWN BY	DATE	DRAWN BY
	01/JUL/13	CHERRY	01/JUL/13	CHERRY

ITEM NO.	PART NO.	TITLE
	FWF25018-SXXXXXXB	FWF25018
		Wire to Board (Water)
		Pitch 2.50mm 180° Vertical (DIP)
		REV 0
		SHEET NO. 1/2

**TXGR**  
 Leader Of Industry

THIS DRAWING CONTAINS INFORMATION THAT IS PROPRIETARY TO TXGA INDUSTRIAL ELECTRONICS(SZ)CO.,LTD AND SHOULD NOT BE USED WITHOUT WRITTEN PERMISSION

REV	LOCATIONS	DESCRIPTION	DATE	REVISER	APPD

REV	LOCATIONS	DESCRIPTION	DATE	REVISER	APPD

Material and Plating : Housing Pa66 UL94V-2, Tn-Plated.		Material and Plating : Housing Pa66 UL94V-2, Gold-Plated.		Material and Plating : Housing Pa6T UL94V-0, Tn-Plated.		Material and Plating : Housing Pa6T UL94V-0, Gold-Plated.	
Cuts	Part No.	Dimensions(in/mm)		Cuts	Part No.	Dimensions(in/mm)	
		A	B			A	B
2	FWF25018-S02S22W1B	.098(2.50)	.295(7.50)	2	FWF25018-S02S14W5B	.098(2.50)	.295(7.50)
3	FWF25018-S03S22W1B	.197(5.00)	.394(10.00)	3	FWF25018-S03S14W5B	.197(5.00)	.394(10.00)
4	FWF25018-S04S22W1B	.295(7.50)	.492(12.50)	4	FWF25018-S04S14W5B	.295(7.50)	.492(12.50)
5	FWF25018-S05S22W1B	.394(10.00)	.591(15.00)	5	FWF25018-S05S14W5B	.394(10.00)	.591(15.00)
6	FWF25018-S06S22W1B	.492(12.50)	.689(17.50)	6	FWF25018-S06S14W5B	.492(12.50)	.689(17.50)
7	FWF25018-S07S22W1B	.591(15.00)	.787(20.00)	7	FWF25018-S07S14W5B	.591(15.00)	.787(20.00)
8	FWF25018-S08S22W1B	.689(17.50)	.886(22.50)	8	FWF25018-S08S14W5B	.689(17.50)	.886(22.50)
9	FWF25018-S09S22W1B	.787(20.00)	.984(25.00)	9	FWF25018-S09S14W5B	.787(20.00)	.984(25.00)
10	FWF25018-S10S22W1B	.886(22.50)	1.083(27.50)	10	FWF25018-S10S14W5B	.886(22.50)	1.083(27.50)
11	FWF25018-S11S22W1B	.984(25.00)	1.181(30.00)	11	FWF25018-S11S14W5B	.984(25.00)	1.181(30.00)
12	FWF25018-S12S22W1B	1.083(27.50)	1.279(32.50)	12	FWF25018-S12S14W5B	1.083(27.50)	1.279(32.50)
13	FWF25018-S13S22W1B	1.181(30.00)	1.378(35.00)	13	FWF25018-S13S14W5B	1.181(30.00)	1.378(35.00)
14	FWF25018-S14S22W1B	1.279(32.50)	1.476(37.50)	14	FWF25018-S14S14W5B	1.279(32.50)	1.476(37.50)
15	FWF25018-S15S22W1B	1.378(35.00)	1.575(40.00)	15	FWF25018-S15S14W5B	1.378(35.00)	1.575(40.00)
16	FWF25018-S16S22W1B	1.476(37.50)	1.673(42.50)	16	FWF25018-S16S14W5B	1.476(37.50)	1.673(42.50)

THIRD ANGLE PROJECTION 	DESIGN UNITS Inch (metric)	X.XX±.008(0.20)	X.XX±.006(0.15)	X.XX±.004(0.10)	X.XX±.05
	SCALE SIZE A4	5:1	A4		
GENERAL TOLERANCES (UNLESS SPECIFIED)	APPROVE BY FRANK	DATE 01/JUL/13	CHECKED BY JACOB	DRAWN BY CHERRY	DATE 01/JUL/13
PART NO. FWF25018-SXXXXXXB	ITEM NO. FWF25018	TITLE Wire to Board (Water) Pitch 2.50mm 180° Vertical (DIP)			
Leader Of Industry <b>TXGR</b>		REV 0	SHEET NO. 2/2		

THIS DRAWING CONTAINS INFORMATION THAT IS PROPRIETARY TO TXGA INDUSTRIAL ELECTRONICS(SZ)CO.,LTD AND SHOULD NOT BE USED WITHOUT WRITTEN PERMISSION

## X-ON Electronics

Largest Supplier of Electrical and Electronic Components

*Click to view similar products for [Headers & Wire Housings](#) category:*

*Click to view products by [TXGA](#) manufacturer:*

Other Similar products are found below :

[95000-104TRLF](#) [10135584-644402LF](#) [DF62W-EP2022PCA](#) [95000-106TRLF](#) [DF62W-2022SCA](#) [DF62W-EP2022PC](#) [2203348](#) [DF62W-2022SC](#) [1084018](#) [1029039](#) [1084017](#) [802-10-012-10-002000](#) [1112640](#) [1112639](#) [891-007-9SS-BST1T](#) [000-34000](#) [0008550134](#) [0009482033](#) [0009507031](#) [57102-F02-18ULF](#) [57102-S06-03LF](#) [57202-S52-04LF](#) [PCN6-15S-2.5E](#) [0039019024](#) [58102-G61-06LF](#) [582553-1](#) [0009485154](#) [0009508121](#) [0022285053](#) [0050291907](#) [018731A](#) [LY20-4P-DT1-P1E-BR](#) [02.125.8002.8](#) [60101931](#) [60598-1 \(Cut Strip\)](#) [M1625-3R/100](#) [61062-3](#) [61082-181009](#) [CSU011177004](#) [636-1427](#) [638009-1](#) [641938-9](#) [641991-4](#) [644168-1](#) [644827-2](#) [647662-1](#) [65039-019ELF](#) [65692-001LF](#) [65781-018](#) [65781-047](#)