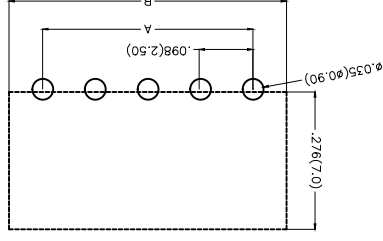
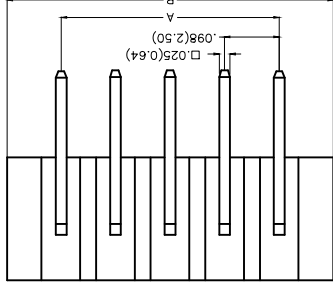
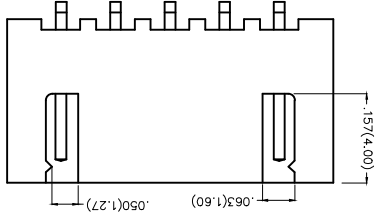
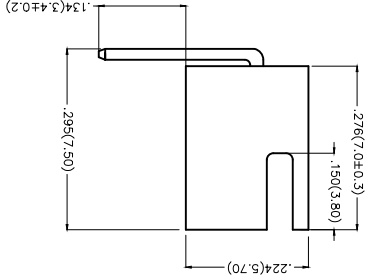


REV	LOCATIONS	DESCRIPTION	DATE	REVISER	APPD

Electrical
 Current Rating: 3.0A AC(rms)/DC
 Voltage Rating: 250V AC(rms)/DC
 Contact Resistance: 20 mΩ Max
 Insulation Resistance: 1000 MΩ MIN
 Withstanding Voltage: 1000V AC r.m.s
 Temperature Range—Operating: -25°C~+85°C
 Material and Plating
 Housing: Glass Filled Polyester (UL 94V-2)
 Contact Pin: Brass
 Plating: Full gold/ Full tin

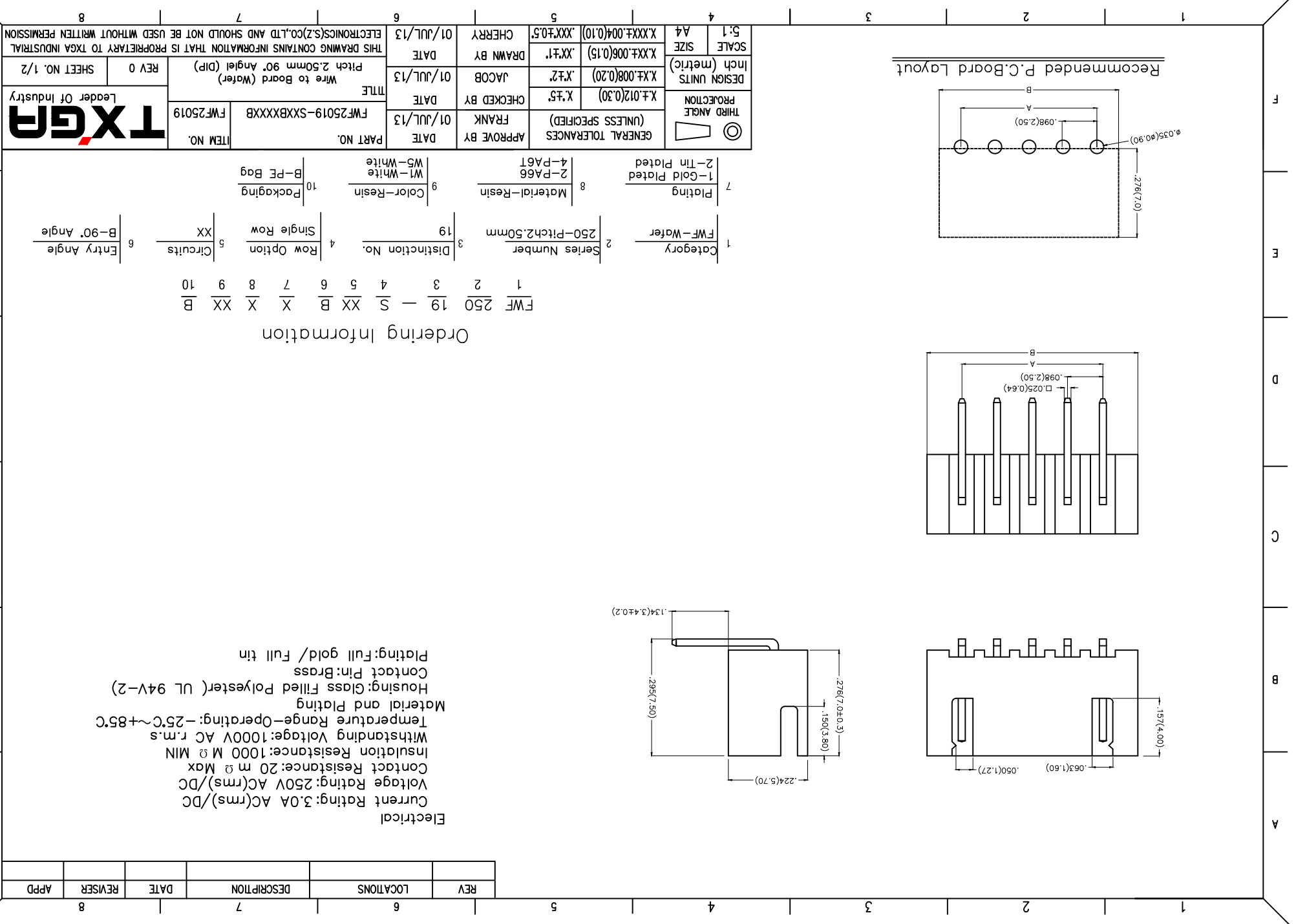


Recommended P.C.Board Layout

1	Category	FWF-Water
2	Series Number	250-Pitch 2.50mm
3	Distinction No.	19
4	Row Option	Single Row
5	Circuits	XX
6	Entry Angle	B-90° Angle
7	Plating	1-Gold Plated 2-Tin Plated
8	Material-Resin	2-PA66 4-PA6T
9	Color-Resin	W1-White W5-White
10	Packaging	B-PE Bag

Ordering Information
 FWF 250 19 - S XX B X X XX B
 1 2 3 4 5 6 7 8 9 10

THIRD ANGLE PROJECTION	DESIGN UNITS	X.±.2	X.±.2	JACOB	01/JUL/13	TITLE Wire to Board (Water) Pitch 2.50mm 90° Angle (DIP)	REV 0 SHEET NO. 1/2
	SCALE	X.XX±.006(0.15)	X.XX±.1	DRAWN BY	01/JUL/13		
GENERAL TOLERANCES (UNLESS SPECIFIED)	APPROVE BY	FRANK	01/JUL/13	PART NO.	FWF25019-SXXBXXXXXB	ITEM NO. FWF25019	Leader Of Industry TXGR
	CHECKED BY	X.±.5	X.±.2	DATE	01/JUL/13		
5:1	A4	X.XX±.004(0.10)	X.XX±.05	CHERRY	01/JUL/13	THIS DRAWING CONTAINS INFORMATION THAT IS PROPRIETARY TO TXGA INDUSTRIAL ELECTRONICS(SZ)CO.,LTD AND SHOULD NOT BE USED WITHOUT WRITTEN PERMISSION	



REV	LOCATIONS	DESCRIPTION	DATE	REVISER	APPD

A

B

C

D

E

F

C/Dims (in/mm)	Part No.	Dimensions (in/mm)	
		A	B
Material and Plating : Housing PA66 UL94V-2, Tin-Plated all.			
(h)	Part No.	A	B
FWF25019-S02822W1B	2	.098(2.50)	.295(7.50)
FWF25019-S03822W1B	3	.197(5.00)	.394(10.00)
FWF25019-S04822W1B	4	.295(7.50)	.492(12.50)
FWF25019-S05822W1B	5	.394(10.00)	.591(15.00)
FWF25019-S06822W1B	6	.492(12.50)	.689(17.50)
FWF25019-S07822W1B	7	.591(15.00)	.787(20.00)
FWF25019-S08822W1B	8	.689(17.50)	.886(22.50)
FWF25019-S09822W1B	9	.787(20.00)	.984(25.00)
FWF25019-S10822W1B	10	.886(22.50)	.1.083(27.50)
FWF25019-S11822W1B	11	.984(25.00)	1.181(30.00)
FWF25019-S12822W1B	12	1.083(27.50)	1.280(32.50)
FWF25019-S13822W1B	13	1.181(30.00)	1.378(35.00)
FWF25019-S14822W1B	14	1.280(32.50)	1.476(37.50)
FWF25019-S15822W1B	15	1.378(35.00)	1.575(40.00)
FWF25019-S16822W1B	16	1.476(37.50)	1.673(42.50)
Material and Plating : Housing PA6T UL94V-0, Gold Flash.			
(h)	Part No.	A	B
FWF25019-S02814W5B	2	.098(2.50)	.295(7.50)
FWF25019-S03814W5B	3	.197(5.00)	.394(10.00)
FWF25019-S04814W5B	4	.295(7.50)	.492(12.50)
FWF25019-S05814W5B	5	.394(10.00)	.591(15.00)
FWF25019-S06814W5B	6	.492(12.50)	.689(17.50)
FWF25019-S07814W5B	7	.591(15.00)	.787(20.00)
FWF25019-S08814W5B	8	.689(17.50)	.886(22.50)
FWF25019-S09814W5B	9	.787(20.00)	.984(25.00)
FWF25019-S10814W5B	10	.886(22.50)	1.083(27.50)
FWF25019-S11814W5B	11	.984(25.00)	1.181(30.00)
FWF25019-S12814W5B	12	1.083(27.50)	1.280(32.50)
FWF25019-S13814W5B	13	1.181(30.00)	1.378(35.00)
FWF25019-S14814W5B	14	1.280(32.50)	1.476(37.50)
FWF25019-S15814W5B	15	1.378(35.00)	1.575(40.00)
FWF25019-S16814W5B	16	1.476(37.50)	1.673(42.50)

THIRD ANGLE PROJECTION 	DESIGN UNITS	X.±.008(0.20)	X.±.7	JACOB	01/JUL/13
	Inch (metric)	X.±.006(0.15)	.XX±.1	DRAWN BY	DATE
SCALE	SIZE	A4	X.XXX±.004(0.10)	CHEERY	01/JUL/13
5:1			.XXX±.05		
GENERAL TOLERANCES (UNLESS SPECIFIED)					
APPROVE BY	FRANK	01/JUL/13	DATE	PART NO.	FWF25019-SXXBXXXXB
CHECKED BY	X.±.5	01/JUL/13	DATE	ITEM NO.	FWF25019
TITLE Wire to Board (Water) Pitch 2.50mm 90° Angle (DIP)					
REV 0 SHEET NO. 2/2					
THIS DRAWING CONTAINS INFORMATION THAT IS PROPRIETARY TO TXGA INDUSTRIAL ELECTRONICS(SZ)CO.,LTD AND SHOULD NOT BE USED WITHOUT WRITTEN PERMISSION					

8

7

6

5

4

3

2

1

A

B

C

D

E

F

X-ON Electronics

Largest Supplier of Electrical and Electronic Components

Click to view similar products for [Headers & Wire Housings](#) category:

Click to view products by [TXGA](#) manufacturer:

Other Similar products are found below :

[95000-104TRLF](#) [10135584-644402LF](#) [DF62W-EP2022PCA](#) [95000-106TRLF](#) [DF62W-2022SCA](#) [DF62W-EP2022PC](#) [2203348](#) [DF62W-2022SC](#) [1084018](#) [1029039](#) [1084017](#) [802-10-012-10-002000](#) [1112640](#) [1112639](#) [891-007-9SS-BST1T](#) [000-34000](#) [0008550134](#) [0009482033](#) [0009507031](#) [57102-F02-18ULF](#) [57102-S06-03LF](#) [57202-S52-04LF](#) [PCN6-15S-2.5E](#) [0039019024](#) [58102-G61-06LF](#) [582553-1](#) [0009485154](#) [0009508121](#) [0022285053](#) [0050291907](#) [018731A](#) [LY20-4P-DT1-P1E-BR](#) [02.125.8002.8](#) [60101931](#) [60598-1 \(Cut Strip\)](#) [M1625-3R/100](#) [61062-3](#) [61082-181009](#) [CSU011177004](#) [636-1427](#) [638009-1](#) [641938-9](#) [641991-4](#) [644168-1](#) [644827-2](#) [647662-1](#) [65039-019ELF](#) [65692-001LF](#) [65781-018](#) [65781-047](#)