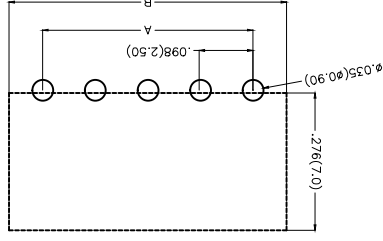
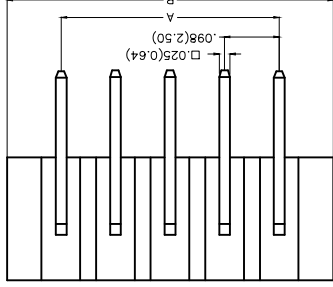
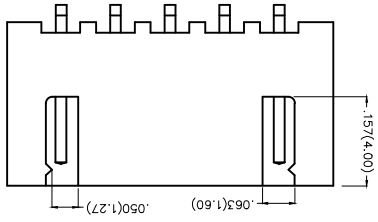
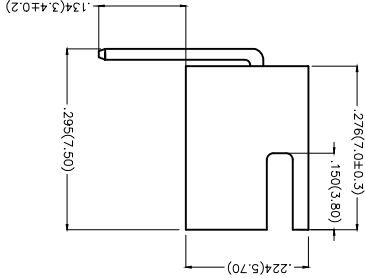


REV	LOCATIONS	DESCRIPTION	DATE	REVISER	APPD

**Electrical**  
 Current Rating: 3.0A AC(rms)/DC  
 Voltage Rating: 250V AC(rms)/DC  
 Contact Resistance: 20 mΩ Max  
 Insulation Resistance: 1000 MΩ MIN  
 Withstanding Voltage: 1000V AC r.m.s  
 Temperature Range—Operating: -25°C~+85°C  
 Material and Plating  
 Housing: Glass Filled Polyester (UL 94V-2)  
 Contact Pin: Brass  
 Plating: Full gold/ Full tin



Recommended P.C.Board Layout

1	Category	FWF-Water
2	Series Number	250-Pitch 2.50mm
3	Distinction No.	19
4	Row Option	Single Row
5	Circuits	XX
6	Entry Angle	B-90° Angle
7	Plating	1-Gold Plated 2-Tin Plated
8	Material-Resin	2-PA66 4-PA6T
9	Color-Resin	W1-White W5-White
10	Packaging	B-PE Bag

FWF 250 19 - S XX B 6  
 X X XX B 7  
 X X 8  
 B 9  
 B 10

Ordering Information

THIRD ANGLE PROJECTION	GENERAL TOLERANCES (UNLESS SPECIFIED)	DATE	APPROVE BY	DATE	PART NO.	ITEM NO.
	X.±.012(0.30)	01/JUL/13	FRANK	01/JUL/13	FWF25019-SXXBXXXXXB	
DESIGN UNITS Inch (metric)	X.±.2	DATE	CHECKED BY	DATE	TITLE	REV 0
X.±.008(0.20)	01/JUL/13	JACOB	01/JUL/13	Wire to Board (Water) Pitch 2.50mm 90° Angle (DIP)	SHEET NO. 1/2	
SCALE	X.±.1	DRAWN BY	DATE	THIS DRAWING CONTAINS INFORMATION THAT IS PROPRIETARY TO TXGA INDUSTRIAL ELECTRONICS(SZ)CO.,LTD AND SHOULD NOT BE USED WITHOUT WRITTEN PERMISSION		
5:1	X.±.004(0.10)	CHERRY	01/JUL/13	TXGA Leader Of Industry		



REV	LOCATIONS	DESCRIPTION	DATE	REVISER	APPD
-----	-----------	-------------	------	---------	------

8 7 6 5 4 3 2 1

(h)	Part No.	Dimensions(in/mm)	
		A	B
Material and Plating : Housing PA66 UL94V-2 , Tin-Plated all.			
2	FWF25019-S02S12W1B	.098(2.50)	.295(7.50)
3	FWF25019-S03S12W1B	.197(5.00)	.394(10.00)
4	FWF25019-S04S12W1B	.295(7.50)	.492(12.50)
5	FWF25019-S05S12W1B	.394(10.00)	.591(15.00)
6	FWF25019-S06S12W1B	.492(12.50)	.689(17.50)
7	FWF25019-S07S12W1B	.591(15.00)	.787(20.00)
8	FWF25019-S08S12W1B	.689(17.50)	.886(22.50)
9	FWF25019-S09S12W1B	.787(20.00)	.984(25.00)
10	FWF25019-S10S12W1B	.886(22.50)	1.083(27.50)
11	FWF25019-S11S12W1B	.984(25.00)	1.181(30.00)
12	FWF25019-S12S12W1B	1.083(27.50)	1.279(32.50)
13	FWF25019-S13S12W1B	1.181(30.00)	1.378(35.00)
14	FWF25019-S14S12W1B	1.279(32.50)	1.476(37.50)
15	FWF25019-S15S12W1B	1.378(35.00)	1.575(40.00)
16	FWF25019-S16S12W1B	1.476(37.50)	1.673(42.50)
Material and Plating : Housing PA6T UL94V-0 , Tin-Plated all.			
2	FWF25019-S02B24W5B	.098(2.50)	.295(7.50)
3	FWF25019-S03B24W5B	.197(5.00)	.394(10.00)
4	FWF25019-S04B24W5B	.295(7.50)	.492(12.50)
5	FWF25019-S05B24W5B	.394(10.00)	.591(15.00)
6	FWF25019-S06B24W5B	.492(12.50)	.689(17.50)
7	FWF25019-S07B24W5B	.591(15.00)	.787(20.00)
8	FWF25019-S08B24W5B	.689(17.50)	.886(22.50)
9	FWF25019-S09B24W5B	.787(20.00)	.984(25.00)
10	FWF25019-S10B24W5B	.886(22.50)	1.083(27.50)
11	FWF25019-S11B24W5B	.984(25.00)	1.181(30.00)
12	FWF25019-S12B24W5B	1.083(27.50)	1.279(32.50)
13	FWF25019-S13B24W5B	1.181(30.00)	1.378(35.00)
14	FWF25019-S14B24W5B	1.279(32.50)	1.476(37.50)
15	FWF25019-S15B24W5B	1.378(35.00)	1.575(40.00)
16	FWF25019-S16B24W5B	1.476(37.50)	1.673(42.50)

THIRD ANGLE PROJECTION	DESIGN UNITS Inch (metric)	SCALE	SIZE	5:1
		A4	X.XXX.F.004(0.10)	.XXX.F.0.5
GENERAL TOLERANCES (UNLESS SPECIFIED)	APPROVE BY	DATE	01/JUL/13	FRANK
		CHECKED BY	DATE	01/JUL/13
DRAWN BY	DATE	01/JUL/13	JACOB	
		01/JUL/13	CHERRY	
THIS DRAWING CONTAINS INFORMATION THAT IS PROPRIETARY TO TXGA INDUSTRIAL ELECTRONICS(SZ)CO.,LTD AND SHOULD NOT BE USED WITHOUT WRITTEN PERMISSION				



PART NO. FWF25019-SXXBXXXXB  
ITEM NO. FWF25019

Wire to Board (Water)  
Pitch 2.50mm 90° Angle (DIP)

REV 0 SHEET NO. 2/2

A B C D E F

A B C D E F

## X-ON Electronics

Largest Supplier of Electrical and Electronic Components

*Click to view similar products for [Headers & Wire Housings](#) category:*

*Click to view products by [TXGA](#) manufacturer:*

Other Similar products are found below :

[95000-104TRLF](#) [10135584-644402LF](#) [DF62W-EP2022PCA](#) [95000-106TRLF](#) [DF62W-2022SCA](#) [DF62W-EP2022PC](#) [2203348](#) [DF62W-2022SC](#) [1084018](#) [1029039](#) [1084017](#) [802-10-012-10-002000](#) [1112640](#) [1112639](#) [891-007-9SS-BST1T](#) [000-34000](#) [0008550134](#) [0009482033](#) [0009507031](#) [57102-F02-18ULF](#) [57102-S06-03LF](#) [57202-S52-04LF](#) [PCN6-15S-2.5E](#) [0039019024](#) [58102-G61-06LF](#) [582553-1](#) [0009485154](#) [0009508121](#) [0022285053](#) [0050291907](#) [018731A](#) [LY20-4P-DT1-P1E-BR](#) [02.125.8002.8](#) [60101931](#) [60598-1 \(Cut Strip\)](#) [M1625-3R/100](#) [61062-3](#) [61082-181009](#) [CSU011177004](#) [636-1427](#) [638009-1](#) [641938-9](#) [641991-4](#) [644168-1](#) [644827-2](#) [647662-1](#) [65039-019ELF](#) [65692-001LF](#) [65781-018](#) [65781-047](#)