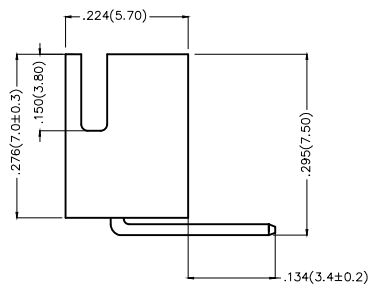
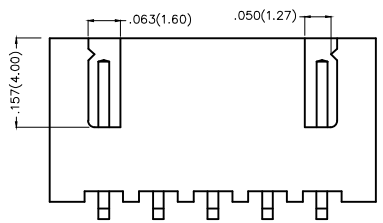
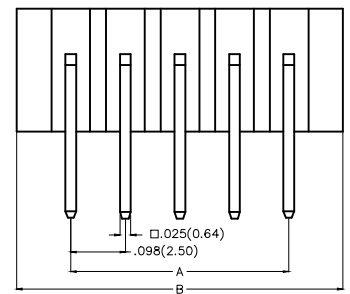


REV	LOCATIONS	DESCRIPTION	DATE	REVISER	APPD



Electrical
 Current Rating: 3.0A AC(rms)/DC
 Voltage Rating: 250V AC(rms)/DC
 Contact Resistance: 20 mΩ Max
 Insulation Resistance: 1000 MΩ MIN
 Withstanding Voltage: 1000V AC r.m.s
 Temperature Range—Operating: -25°C~+85°C

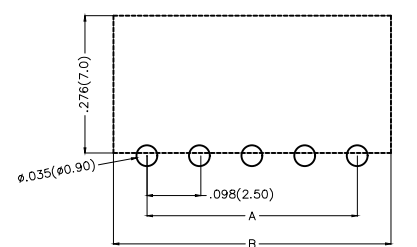
Material and Plating
 Housing: Glass Filled Polyester(UL 94V-2)
 Contact Pin: Brass
 Plating: Full gold/ Full tin




Ordering Information

FWF 250 19 — S XX B X X XX B
 1 2 3 4 5 6 7 8 9 10

1 Category FWF—Wafer	2 Series Number 250—Pitch2.50mm	3 Distinction No. 19	4 Row Option Single Row	5 Circuits XX	6 Entry Angle B—90° Angle
7 Plating 1—Gold Plated 2—Tin Plated	8 Material—Resin 2—PA66 4—PA6T	9 Color—Resin W1—White W5—White	10 Packaging B—PE Bag		



Recommended P.C.Board Layout

THIRD ANGLE PROJECTION	GENERAL TOLERANCES (UNLESS SPECIFIED)		APPROVE BY FRANK	DATE 01/JUL/13	PART NO. FWF25019—SXXBXXXXB	ITEM NO. FWF25019	 Leader Of Industry
	DESIGN UNITS Inch (metric)	X.±.012(0.30) X.±5°	CHECKED BY JACOB	DATE 01/JUL/13	TITLE Wire to Board (Wafer) Pitch 2.50mm 90° Angled (DIP)		
SCALE 5:1	SIZE A4	X.XX±.006(0.15) .XX'±1°	DRAWN BY CHERRY	DATE 01/JUL/13	THIS DRAWING CONTAINS INFORMATION THAT IS PROPRIETARY TO TXGA INDUSTRIAL ELECTRONICS(S.Z)CO.,LTD AND SHOULD NOT BE USED WITHOUT WRITTEN PERMISSION		

REV	LOCATIONS	DESCRIPTION	DATE	REVISER	APPD

Material and Plating : Housing PA66 UL94V-2 , Tin-Plated all.

Circuits (n)	Part No.	Dimensions(in/mm)	
		A	B
2	FWF25019-S02B22W1B	.098(2.50)	.295(7.50)
3	FWF25019-S03B22W1B	.197(5.00)	.394(10.00)
4	FWF25019-S04B22W1B	.295(7.50)	.492(12.50)
5	FWF25019-S05B22W1B	.394(10.00)	.591(15.00)
6	FWF25019-S06B22W1B	.492(12.50)	.689(17.50)
7	FWF25019-S07B22W1B	.591(15.00)	.787(20.00)
8	FWF25019-S08B22W1B	.689(17.50)	.886(22.50)
9	FWF25019-S09B22W1B	.787(20.00)	.984(25.00)
10	FWF25019-S10B22W1B	.886(22.50)	1.083(27.50)
11	FWF25019-S11B22W1B	.984(25.00)	1.181(30.00)
12	FWF25019-S12B22W1B	1.083(27.50)	1.024(32.50)
13	FWF25019-S13B22W1B	1.181(30.00)	1.378(35.00)
14	FWF25019-S14B22W1B	1.024(32.50)	1.476(37.50)
15	FWF25019-S15B22W1B	1.378(35.00)	1.575(40.00)
16	FWF25019-S16B22W1B	1.476(37.50)	1.673(42.50)

Material and Plating : Housing PA66 UL94V-2 ,Gold Flash.



Circuits (n)	Part No.	Dimensions(in/mm)	
		A	B
2	FWF25019-S02S12W1B	.098(2.50)	.295(7.50)
3	FWF25019-S03S12W1B	.197(5.00)	.394(10.00)
4	FWF25019-S04S12W1B	.295(7.50)	.492(12.50)
5	FWF25019-S05S12W1B	.394(10.00)	.591(15.00)
6	FWF25019-S06S12W1B	.492(12.50)	.689(17.50)
7	FWF25019-S07S12W1B	.591(15.00)	.787(20.00)
8	FWF25019-S08S12W1B	.689(17.50)	.886(22.50)
9	FWF25019-S09S12W1B	.787(20.00)	.984(25.00)
10	FWF25019-S10S12W1B	.886(22.50)	1.083(27.50)
11	FWF25019-S11S12W1B	.984(25.00)	1.181(30.00)
12	FWF25019-S12S12W1B	1.083(27.50)	1.024(32.50)
13	FWF25019-S13S12W1B	1.181(30.00)	1.378(35.00)
14	FWF25019-S14S12W1B	1.024(32.50)	1.476(37.50)
15	FWF25019-S15S12W1B	1.378(35.00)	1.575(40.00)
16	FWF25019-S16S12W1B	1.476(37.50)	1.673(42.50)

Material and Plating : Housing PA6T UL94V-0 , Tin-Plated all.

Circuits (n)	Part No.	Dimensions(in/mm)	
		A	B
2	FWF25019-S02B24W5B	.098(2.50)	.295(7.50)
3	FWF25019-S03B24W5B	.197(5.00)	.394(10.00)
4	FWF25019-S04B24W5B	.295(7.50)	.492(12.50)
5	FWF25019-S05B24W5B	.394(10.00)	.591(15.00)
6	FWF25019-S06B24W5B	.492(12.50)	.689(17.50)
7	FWF25019-S07B24W5B	.591(15.00)	.787(20.00)
8	FWF25019-S08B24W5B	.689(17.50)	.886(22.50)
9	FWF25019-S09B24W5B	.787(20.00)	.984(25.00)
10	FWF25019-S10B24W5B	.886(22.50)	1.083(27.50)
11	FWF25019-S11B24W5B	.984(25.00)	1.181(30.00)
12	FWF25019-S12B24W5B	1.083(27.50)	1.024(32.50)
13	FWF25019-S13B24W5B	1.181(30.00)	1.378(35.00)
14	FWF25019-S14B24W5B	1.024(32.50)	1.476(37.50)
15	FWF25019-S15B24W5B	1.378(35.00)	1.575(40.00)
16	FWF25019-S16B24W5B	1.476(37.50)	1.673(42.50)

Material and Plating : Housing PA6T UL94V-0 ,Gold Flash.

Circuits (n)	Part No.	Dimensions(in/mm)	
		A	B
2	FWF25019-S02B14W5B	.098(2.50)	.295(7.50)
3	FWF25019-S03B14W5B	.197(5.00)	.394(10.00)
4	FWF25019-S04B14W5B	.295(7.50)	.492(12.50)
5	FWF25019-S05B14W5B	.394(10.00)	.591(15.00)
6	FWF25019-S06B14W5B	.492(12.50)	.689(17.50)
7	FWF25019-S07B14W5B	.591(15.00)	.787(20.00)
8	FWF25019-S08B14W5B	.689(17.50)	.886(22.50)
9	FWF25019-S09B14W5B	.787(20.00)	.984(25.00)
10	FWF25019-S10B14W5B	.886(22.50)	1.083(27.50)
11	FWF25019-S11B14W5B	.984(25.00)	1.181(30.00)
12	FWF25019-S12B14W5B	1.083(27.50)	1.024(32.50)
13	FWF25019-S13B14W5B	1.181(30.00)	1.378(35.00)
14	FWF25019-S14B14W5B	1.024(32.50)	1.476(37.50)
15	FWF25019-S15B14W5B	1.378(35.00)	1.575(40.00)
16	FWF25019-S16B14W5B	1.476(37.50)	1.673(42.50)

 THIRD ANGLE PROJECTION	GENERAL TOLERANCES (UNLESS SPECIFIED)		APPROVE BY	DATE	PART NO.	ITEM NO.	 Leader Of Industry	
	X.±.012(0.30) X.'±5'		FRANK	01/JUL/13	FWF25019-SXXBXXXXB	FWF25019		
	DESIGN UNITS Inch (metric)		CHECKED BY	DATE	TITLE			
	X.XX±.008(0.20) X'±2'		JACOB	01/JUL/13	Wire to Board (Wafer) Pitch 2.50mm 90° Angled (DIP)			
SCALE	SIZE	X.XX±.006(0.15) .XX'±1'	DRAWN BY	DATE	THIS DRAWING CONTAINS INFORMATION THAT IS PROPRIETARY TO TXGA INDUSTRIAL ELECTRONICS(S.Z)CO.,LTD AND SHOULD NOT BE USED WITHOUT WRITTEN PERMISSION		REV 0	SHEET NO. 2/2
5:1	A4	X.XXX±.004(0.10) .XXX'±0.5'	CHERRY	01/JUL/13				

X-ON Electronics

Largest Supplier of Electrical and Electronic Components

Click to view similar products for [Headers & Wire Housings](#) category:

Click to view products by [TXGA](#) manufacturer:

Other Similar products are found below :

[0015917161](#) [0022155065](#) [57102-F02-18ULF](#) [58102-G61-06LF](#) [582553-1](#) [01.001.5753.1](#) [0050291907](#) [02.125.8002.8](#) [609-3404](#) [61062-3](#)
[CSU011177004](#) [622-0430](#) [622-3653LF](#) [63453-116](#) [636-1030](#) [636-1427](#) [636-3427](#) [636-4007](#) [641938-9](#) [65495-038](#) [65692-001LF](#) [65781-018](#)
[65781-047](#) [65817-010LF](#) [65817-015LF](#) [67095-007LF](#) [67601157](#) [68631-112](#) [68645-018](#) [699319-000](#) [70.362.1628.0](#) [70-4210](#) [70-4226B](#) [70-](#)
[4853B](#) [71.350.2428.0](#) [733-134](#) [733-162](#) [760-3052](#) [MHR-64-VUAL](#) [80.063.4001.1](#) [800-90-001-10-001000](#) [801-43-002-10-013000](#)
[801-43-006-10-002000](#) [803-43-024-10-001000](#) [803-93-012-10-001000](#) [8-1437020-4](#) [819-22-004-30-001101](#) [820-22-006-30-001101](#)
[820-22-008-30-001101](#) [821-22-002-10-001101](#)