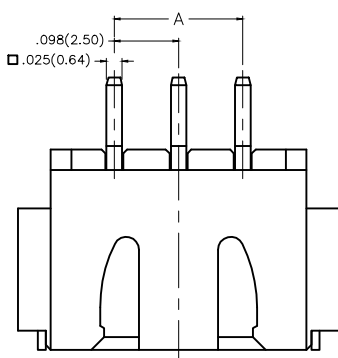
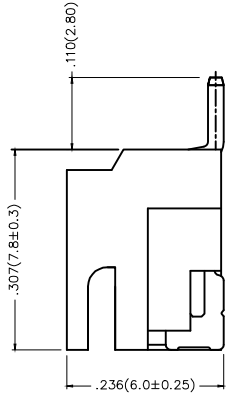


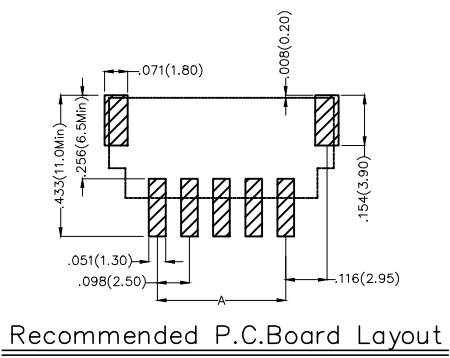
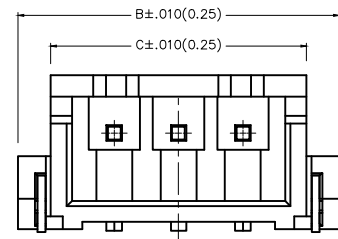
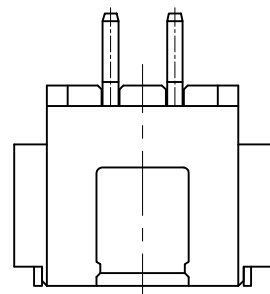
REV	LOCATIONS	DESCRIPTION	DATE	REVISER	APPD
1	△	MPQ: Change 1,000 pcs into 900 pcs / reel	02/MAR/20	KATE	CHERRY



3-12Circuits



2Circuits



Recommended P.C.Board Layout

Electrical

Current Rating: 3.0A AC(rms)/DC
Voltage Rating: 250V AC(rms)/DC
Contact Resistance: 20 mΩ Max
Insulation Resistance: 1000 MΩ MIN
Withstanding Voltage: 1000V AC r.m.s
Temperature Range-Operating: -25°C~+85°C

Material and Plating

Housing: PA9T(UL 94V-0)
Contact Pin: Brass
Plating: Tin Plated

Ordering Information

FWF 250 21 — S XX B 2 4 W5 M
1 2 3 4 5 6 7 8 9 10

1	Category FWF-Wafer	2	Series Number 250-Pitch2.5mm	3	Distinction No. 21	4	Row Option S-Single Row	5	Circuits XX	6	Entry Angle B-90° Angle
7	Plating 2-Tin Plated	8	Material-Resin 4-PA9T	9	Color-Resin W5-White	10	Packaging M-Reel				

 THIRD ANGLE PROJECTION	GENERAL TOLERANCES (UNLESS SPECIFIED)		APPROVE BY FRANK	DATE 01/JUL/13	PART NO. FWF25021-SXXB24W5M	ITEM NO. FWF25021	 Leader Of Industry	
	DESIGN UNITS Inch (metric)	X.±.012(0.30) X.X±.008(0.20)	X.±5° .X±2°	CHECKED BY JACOB	DATE 01/JUL/13	TITLE Wire to Board (Wafer) Pitch 2.5mm 90° Angl (SMT)		REV 1
SCALE 5:1	SIZE A4	X.XX±.006(0.15) X.XXX±.004(0.10)	.XX±1° .XXX±0.5°	DRAWN BY CHERRY	DATE 01/JUL/13	THIS DRAWING CONTAINS INFORMATION THAT IS PROPRIETARY TO TXGA INDUSTRIAL ELECTRONICS(S.Z)CO.,LTD AND SHOULD NOT BE USED WITHOUT WRITTEN PERMISSION		

1 2 3 4 5 6 7 8

REV	LOCATIONS	DESCRIPTION	DATE	REVISER	APPD

A

A

B

B

C

C

D

D



E

E

F

F

Material and Plating : Housing PA9T UL94V-0 , Tin Plated.				
Circuits (n)	Part No.	Dimensions(in/mm)		
		A	B	C
2	FWF25021-S02B24W5M	.098(2.50)	.394(10.00)	.293(7.45)
3	FWF25021-S03B24W5M	.197(5.00)	.492(12.50)	.392(9.95)
4	FWF25021-S04B24W5M	.295(7.50)	.591(15.00)	.490(12.45)
5	FWF25021-S05B24W5M	.394(10.00)	.689(17.50)	.589(14.95)
6	FWF25021-S06B24W5M	.492(12.50)	.787(20.00)	.687(17.45)
7	FWF25021-S07B24W5M	.591(15.00)	.886(22.50)	.785(19.95)
8	FWF25021-S08B24W5M	.689(17.50)	.984(25.00)	.884(22.45)
9	FWF25021-S09B24W5M	.787(20.00)	1.083(27.50)	.982(24.95)
10	FWF25021-S10B24W5M	.886(22.50)	1.181(30.00)	1.081(27.45)
11	FWF25021-S11B24W5M	.984(25.00)	1.024(32.50)	1.179(29.95)
12	FWF25021-S12B24W5M	1.083(27.50)	1.378(35.00)	1.278(32.45)

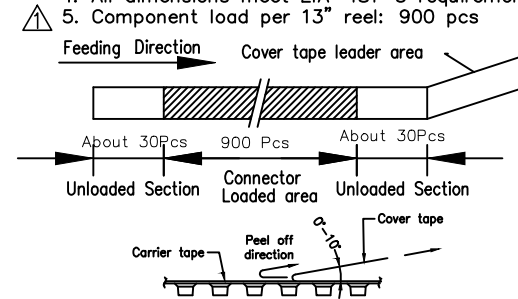
 THIRD ANGLE PROJECTION	GENERAL TOLERANCES (UNLESS SPECIFIED)		APPROVE BY FRANK	DATE 01/JUL/13	PART NO. FWF25021-SXXB24W5M	ITEM NO. FWF25021	 Leader Of Industry	
	X.±.012(0.30)	X.±5°	CHECKED BY JACOB	DATE 01/JUL/13	TITLE Wire to Board (Wafer) Pitch 2.5mm 90° Angl (SMT)			REV 1
	DESIGN UNITS Inch (metric)	X.X±.008(0.20)	.X±2°	DRAWN BY CHERRY	DATE 01/JUL/13	THIS DRAWING CONTAINS INFORMATION THAT IS PROPRIETARY TO TXGA INDUSTRIAL ELECTRONICS(S.Z)CO.,LTD AND SHOULD NOT BE USED WITHOUT WRITTEN PERMISSION		
	SCALE 5:1	SIZE A4	X.XX±.006(0.15)	.XX±1°	X.XXX±.004(0.10)	.XXX±0.5°		

1 2 3 4 5 6 7 8

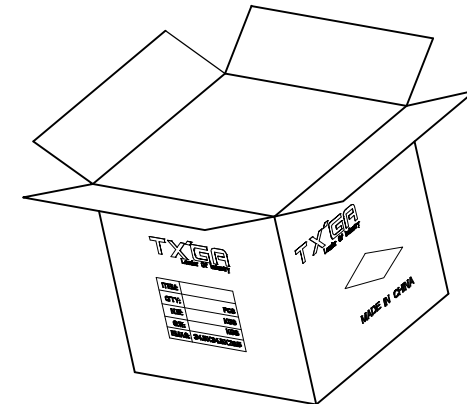
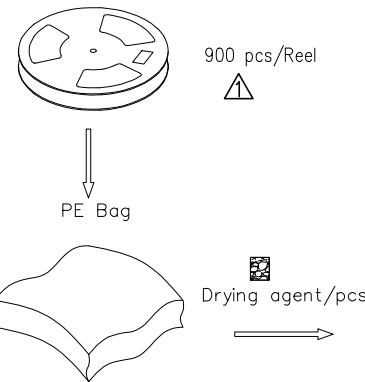
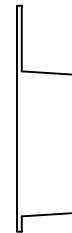
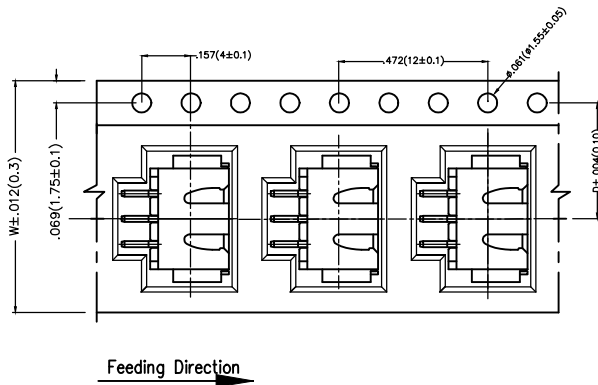
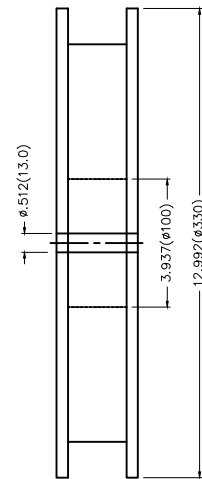
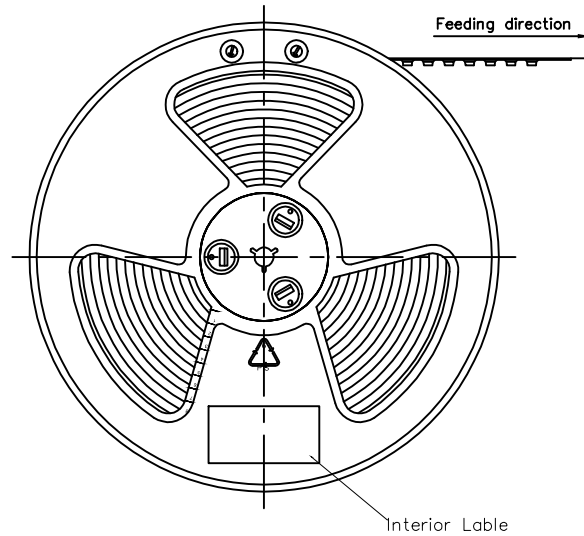
REV	LOCATIONS	DESCRIPTION	DATE	REVISER	APPD

Note:

1. 10 sprocket hole cumulative tolerance ± 0.2
2. Carrier camber is within 1.0mm in 100mm
3. Material: White Conductive polystyrene Alloy 100% recyclable
4. All dimensions meet EIA-481-3 requirements
5. Component load per 13" reel: 900 pcs



Circuits (n)	Dimensions(in/mm)		Circuits (n)	Dimensions(in/mm)	
	D	W		D	W
2	.295(7.50)	.630(16.00)	8	.559(14.20)	1.260(32.00)
3	.295(7.50)	.630(16.00)	9	.559(14.20)	1.260(32.00)
4	.453(11.50)	.945(24.00)	10	.559(14.20)	1.260(32.00)
5	.453(11.50)	.945(24.00)	11	.795(20.20)	1.732(44.00)
6	.453(11.50)	.945(24.00)	12	.795(20.20)	1.732(44.00)
7	.559(14.20)	1.260(32.00)			



 THIRD ANGLE PROJECTION	GENERAL TOLERANCES (UNLESS SPECIFIED)		APPROVE BY FRANK	DATE 01/JUL/13	PART NO. FWF25021-SXXB24W5M	ITEM NO. FWF25021	 Leader Of Industry	
	DESIGN UNITS Inch (metric)	X.±.012(0.30)	X.±5'	CHECKED BY JACOB	DATE 01/JUL/13	TITLE Wire to Board (Wafer) Pitch 2.5mm 90° Angled (SMT)		
	SCALE 5:1	X.XX±.008(0.20)	.X'±2'	DRAWN BY CHERRY	DATE 01/JUL/13	THIS DRAWING CONTAINS INFORMATION THAT IS PROPRIETARY TO TXGA INDUSTRIAL ELECTRONICS(S.Z)CO.,LTD AND SHOULD NOT BE USED WITHOUT WRITTEN PERMISSION		REV 1
	SIZE A4	X.XXX±.004(0.10)	.XXX'±0.5'					SHEET NO. 3/3

X-ON Electronics

Largest Supplier of Electrical and Electronic Components

Click to view similar products for [Headers & Wire Housings](#) category:

Click to view products by [TXGA](#) manufacturer:

Other Similar products are found below :

[0015917161](#) [0022155065](#) [57102-F02-18ULF](#) [58102-G61-06LF](#) [582553-1](#) [01.001.5753.1](#) [0050291907](#) [02.125.8002.8](#) [609-3404](#) [61062-3](#)
[CSU011177004](#) [622-0430](#) [622-3653LF](#) [63453-116](#) [636-1030](#) [636-1427](#) [636-3427](#) [636-4007](#) [641938-9](#) [65495-038](#) [65692-001LF](#) [65781-018](#)
[65781-047](#) [65817-010LF](#) [65817-015LF](#) [67095-007LF](#) [67601157](#) [68631-112](#) [68645-018](#) [699319-000](#) [70.362.1628.0](#) [70-4210](#) [70-4226B](#) [70-](#)
[4853B](#) [71.350.2428.0](#) [733-134](#) [733-162](#) [760-3052](#) [MHR-64-VUAL](#) [80.063.4001.1](#) [800-90-001-10-001000](#) [801-43-002-10-013000](#)
[801-43-006-10-002000](#) [803-43-024-10-001000](#) [803-93-012-10-001000](#) [8-1437020-4](#) [819-22-004-30-001101](#) [820-22-006-30-001101](#)
[820-22-008-30-001101](#) [821-22-002-10-001101](#)