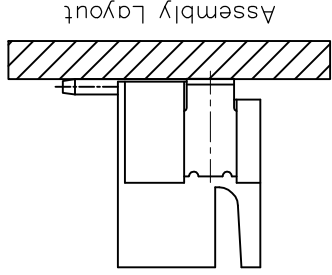
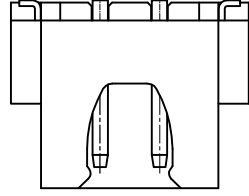
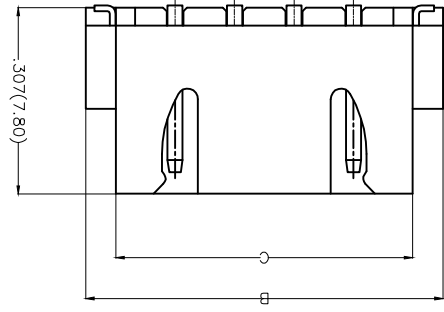
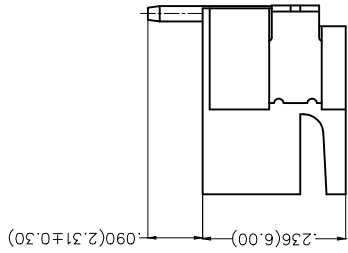


REV	LOCATIONS	DESCRIPTION	DATE	REVISER	APPD

Electrical
 Current Rating: 3.0A AC(rms)/DC
 Voltage Rating: 250V AC(rms)/DC
 Contact Resistance: 20 mΩ Max
 Insulation Resistance: 1000 MΩ MIN
 Withstanding Voltage: 1000V AC r.m.s
 Temperature Range—Operating: -25°C~+85°C
 Material and Plating
 Housing: PA9T (UL 94V-0)
 Contact Pin: Brass
 Plating: Tin Plated



Ordering Information

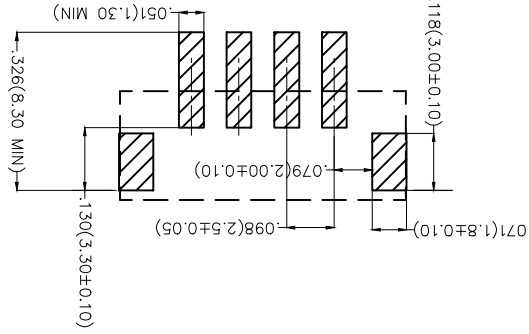
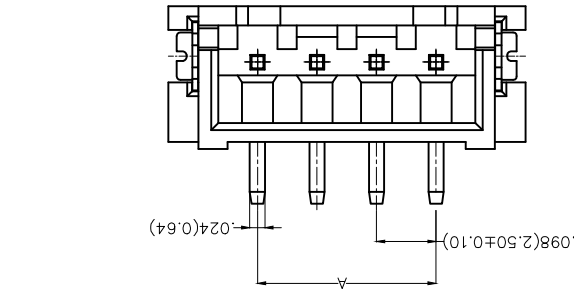
1	FWF 250	28	—	S	XX	S	2	4	W5	M
2	Category	Series Number	Distinction No.	Row Option	Circuits	Entry Angle				
3	FWF-Wafer	250-Pitch 2.5mm		Single Row	XX	S-180° Vertical				
4	Plating	Material-Resin	Color-Resin	Packaging						
5	2-Tin Plated	4-PA9T	W5-Natural	M-Reel						

6	DATE	DATE	DATE	DATE	DATE
01/AUG/13	01/AUG/13	01/AUG/13	01/AUG/13	01/AUG/13	01/AUG/13
APPROVE BY	CHECKED BY	DRAWN BY	DATE	DATE	DATE
FRANK	X.F5	CHERRY	01/AUG/13	01/AUG/13	01/AUG/13

PART NO. FWF25028-SXXS24W5M
 ITEM NO. FWF25028
TXGR Leader Of Industry

GENERAL TOLERANCES (UNLESS SPECIFIED)	APPROVE BY	DATE	GENERAL TOLERANCES (UNLESS SPECIFIED)
X.±.012(0.30)	FRANK	01/AUG/13	X.±.012(0.30)
X.±.008(0.20)	CHECKED BY	DATE	X.±.008(0.20)
X.±.006(0.15)	CHERRY	01/AUG/13	X.±.006(0.15)
X.XXX±.004(0.10)	DRAWN BY	DATE	X.XXX±.004(0.10)
A4	KEVIN	01/AUG/13	A4
SCALE			SCALE
5:1			5:1

THIS DRAWING CONTAINS INFORMATION THAT IS PROPRIETARY TO TXGA INDUSTRIAL ELECTRONICS(SZ)CO.,LTD AND SHOULD NOT BE USED WITHOUT WRITTEN PERMISSION
 WIRE TO BOARD (VERTICAL)
 PITCH 2.5MM 180° VERTICAL (SMT)
 REV 0 SHEET NO. 1/2



REV	LOCATIONS	DESCRIPTION	DATE	REVISER	APPD

Circuits (n)	Part No.	Dimensions(in/mm)		
		A	B	C
2	FWF25028-S02S24W5M	.098(2.50)	.394(10.00)	.293(7.45)
3	FWF25028-S03S24W5M	.197(5.00)	.492(12.50)	.392(9.95)
4	FWF25028-S04S24W5M	.295(7.50)	.591(15.00)	.490(12.45)
5	FWF25028-S05S24W5M	.394(10.00)	.689(17.50)	.589(14.95)
6	FWF25028-S06S24W5M	.492(12.50)	.787(20.00)	.687(17.45)
7	FWF25028-S07S24W5M	.591(15.00)	.886(22.50)	.785(19.95)
8	FWF25028-S08S24W5M	.689(17.50)	.984(25.00)	.884(22.45)
9	FWF25028-S09S24W5M	.787(20.00)	1.083(27.50)	.982(24.95)
10	FWF25028-S10S24W5M	.886(22.50)	1.181(30.00)	1.081(27.45)
11	FWF25028-S11S24W5M	.984(25.00)	1.024(32.50)	1.179(29.95)
12	FWF25028-S12S24W5M	1.083(27.50)	1.378(35.00)	1.278(32.45)

Material and Plating : Housing PA9T UL94V-0 , Tin Plated.



THIRD ANGLE PROJECTION

DESIGN UNITS
Inch (metric)

SCALE
SIZE
5:1
A4

GENERAL TOLERANCES
(UNLESS SPECIFIED)

APPROVE BY
FRANK

DATE
01/AUG/13

PART NO.
FWF25028-SXXS24W5M

ITEM NO.
FWF25028

TXGA
Leader Of Industry

CHECKED BY
CHERRY

DATE
01/AUG/13

TITLE
Wire to Board (Water)
Pitch 2.5mm 180° Vertical (SMT)

REV 0

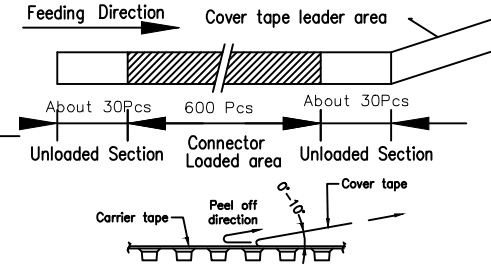
SHEET NO. 1/2

THIS DRAWING CONTAINS INFORMATION THAT IS PROPRIETARY TO TXGA INDUSTRIAL ELECTRONICS(SZ)CO.,LTD AND SHOULD NOT BE USED WITHOUT WRITTEN PERMISSION

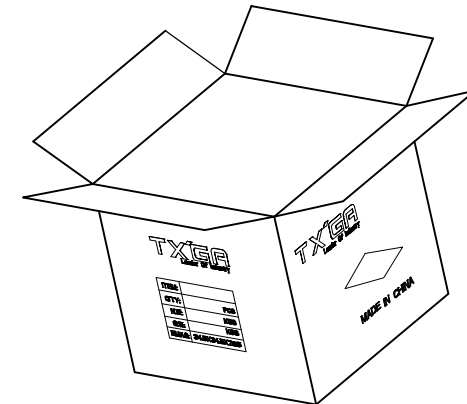
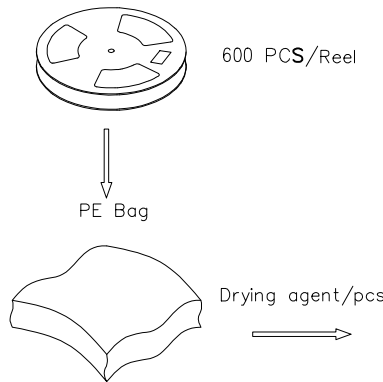
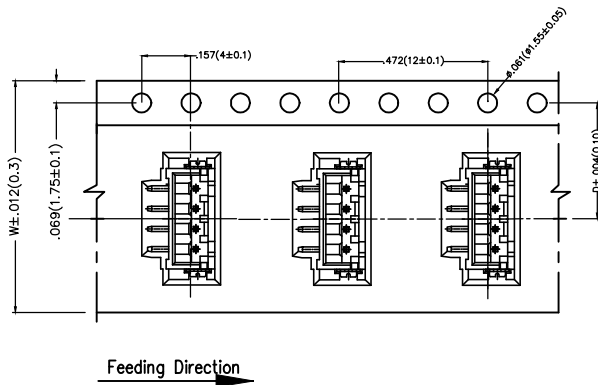
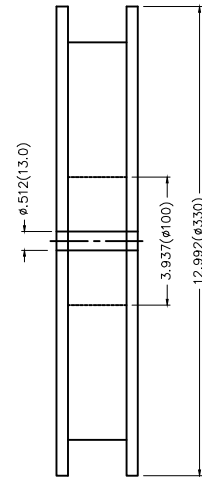
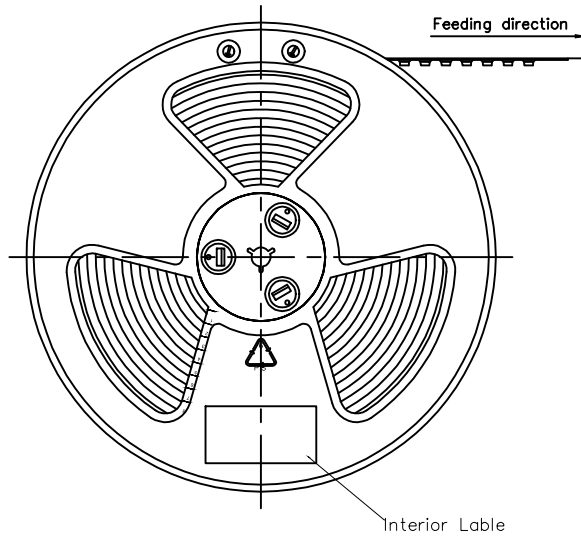
REV	LOCATIONS	DESCRIPTION	DATE	REVISER	APPD

Note:

1. 10 sprocket hole cumulative tolerance ± 0.2
2. Carrier camber is within 1.0mm in 100mm
3. Material: White Conductive polystyrene Alloy 100% recyclable
4. All dimensions meet EIA-481-3 requirements
5. Component load per 13" reel: 600 pcs



Circuits (n)	Dimensions(in/mm)		Circuits (n)	Dimensions(in/mm)	
	D	W		D	W
2	.295(7.50)	.630(16.00)	8	.559(14.20)	1.260(32.00)
3	.295(7.50)	.630(16.00)	9	.559(14.20)	1.260(32.00)
4	.453(11.50)	.945(24.00)	10	.559(14.20)	1.260(32.00)
5	.453(11.50)	.945(24.00)	11	.795(20.20)	1.732(44.00)
6	.453(11.50)	.945(24.00)	12	.795(20.20)	1.732(44.00)
7	.559(14.20)	1.260(32.00)			



 THIRD ANGLE PROJECTION	GENERAL TOLERANCES (UNLESS SPECIFIED)		APPROVE BY FRANK	DATE 01/AUG/13	PART NO. FWF25028-SXXS24W5M	ITEM NO. FWF25028	 TXGA Leader Of Industry	
	DESIGN UNITS Inch (metric)	X. \pm .012(0.30)	X. \pm 5'	CHECKED BY CHERRY	DATE 01/AUG/13	TITLE Wire to Board (Wafer) Pitch 2.5mm 180° Vertical (SMT)		REV 0
	SCALE 5:1	X.XX \pm .008(0.20)	.X \pm 2'	DRAWN BY KEVIN	DATE 01/AUG/13	THIS DRAWING CONTAINS INFORMATION THAT IS PROPRIETARY TO TXGA INDUSTRIAL ELECTRONICS(S.Z)CO.,LTD AND SHOULD NOT BE USED WITHOUT WRITTEN PERMISSION		
	SIZE A4	X.XX \pm .006(0.15)	.XX \pm 1'					

X-ON Electronics

Largest Supplier of Electrical and Electronic Components

Click to view similar products for [Headers & Wire Housings](#) category:

Click to view products by [TXGA](#) manufacturer:

Other Similar products are found below :

[95000-104TRLF](#) [10135584-644402LF](#) [DF62W-EP2022PCA](#) [95000-106TRLF](#) [DF62W-2022SCA](#) [DF62W-EP2022PC](#) [2203348](#) [DF62W-2022SC](#) [1084018](#) [1029039](#) [1084017](#) [802-10-012-10-002000](#) [1112640](#) [1112639](#) [891-007-9SS-BST1T](#) [000-34000](#) [0008550134](#) [0009482033](#) [0009507031](#) [57102-F02-18ULF](#) [57102-S06-03LF](#) [57202-S52-04LF](#) [PCN6-15S-2.5E](#) [0039019024](#) [58102-G61-06LF](#) [582553-1](#) [0009485154](#) [0009508121](#) [0022285053](#) [0050291907](#) [018731A](#) [LY20-4P-DT1-P1E-BR](#) [02.125.8002.8](#) [60101931](#) [60598-1 \(Cut Strip\)](#) [M1625-3R/100](#) [61062-3](#) [61082-181009](#) [CSU011177004](#) [636-1427](#) [638009-1](#) [641938-9](#) [641991-4](#) [644168-1](#) [644827-2](#) [647662-1](#) [65039-019ELF](#) [65692-001LF](#) [65781-018](#) [65781-047](#)