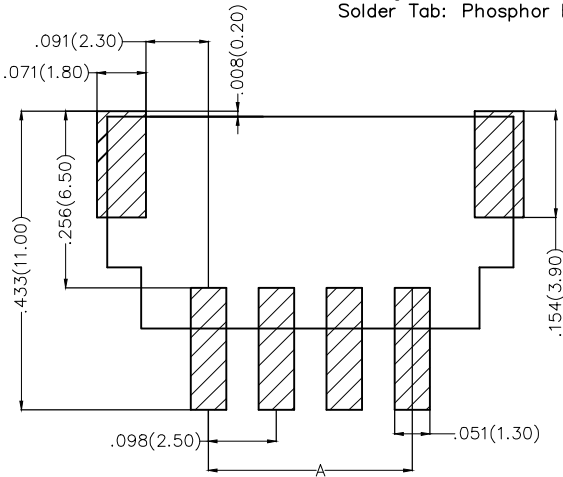
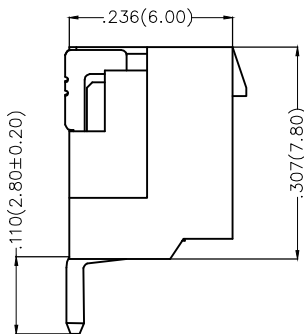
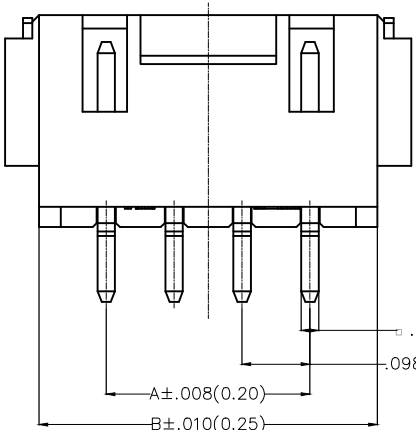


1 2 3 4 5 6 7 8

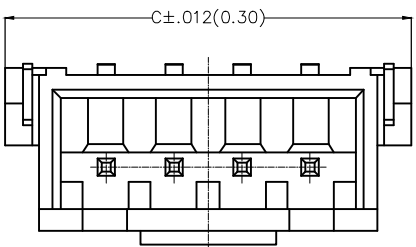
REV	LOCATIONS	DESCRIPTION	DATE	REVISER	APPD

Electrical  
 Current Rating: 3A AC(rms)/DC  
 Voltage Rating: 250V AC(rms)/DC  
 Contact Resistance: 20 mΩ Max  
 Insulation Resistance: 1000 MΩ MIN  
 Withstanding Voltage: 1000V AC r.m.s  
 Temperature Range-Operating: -25°C~+85°C

Material and Plating  
 Housing: PA9T UL 94V-0  
 Contact Pin: Brass  
 Plating: Tin Plated  
 Solder Tab: Phosphor bronze



Recommended P.C. Board Layout



Ordering Information

FWF 250 30 — S XX B 2 5 W5 M  
 1 2 3 4 5 6 7 8 9 10

1	Category FWF-Wafer	2	Series Number 250-Pitch2.50mm	3	Distinction No. 30	4	Row Option S-Single Row	5	Circuits XX	6	Entry Angle B-90° Angle
7	Plating 2-Tin Plated	8	Material-Resin 5-PA9T	9	Color-Resin W5-White	10	Packaging M-Reel				

<p>THIRD ANGLE PROJECTION</p>	GENERAL TOLERANCES (UNLESS SPECIFIED)		APPROVE BY FRANK	DATE 06/JUN/17	PART NO. FWF25030-SXXB25W5M	ITEM NO. FWF25030	<p>Leader Of Industry</p>		
	X. ±0.30	X.* ±5°	CHECKED BY CHERRY	DATE 06/JUN/17	TITLE Wire to Board (Wafer) Pitch 2.5mm 90° Angled (SMT)			REV 0	SHEET NO. 1/2
	X.X ±0.20	X.X* ±2°	DRAWN BY LXF	DATE 06/JUN/17	THIS DRAWING CONTAINS INFORMATION THAT IS PROPRIETARY TO TXGA INDUSTRIAL ELECTRONICS(S.Z)CO.,LTD AND SHOULD NOT BE USED WITHOUT WRITTEN PERMISSION				
SCALE 5:1	SIZE A4	X.XX ±0.15	X.XX* ±1°						
X.XXX ±0.10	X.XXX* ±0.5°								

1 2 3 4 5 6 7 8

1 2 3 4 5 6 7 8

REV	LOCATIONS	DESCRIPTION	DATE	REVISER	APPD

A

A

B

B

C

C

D

D



E

E

F

F

Circuits (n)	Part NO.	Dimension(in/mm)		
		A	B	C
2	FWF25030-S02B25W5M	.098(2.50)	.295(7.50)	.394(10.00)
3	FWF25030-S03B25W5M	.197(5.00)	.394(10.00)	.492(12.50)
4	FWF25030-S04B25W5M	.295(7.50)	.492(12.50)	.591(15.00)
5	FWF25030-S05B25W5M	.394(10.00)	.591(15.00)	.689(17.50)
6	FWF25030-S06B25W5M	.492(12.50)	.689(17.50)	.787(20.00)
8	FWF25030-S08B25W5M	.689(17.50)	.886(22.50)	.984(25.00)

 THIRD ANGLE PROJECTION	GENERAL TOLERANCES (UNLESS SPECIFIED)		APPROVE BY FRANK	DATE 06/JUN/17	PART NO. FWF25030-SXXB25W5M	ITEM NO. FWF25030	 Leader Of Industry		
	X. ±0.30	X.* ±5°	CHECKED BY CHERRY	DATE 06/JUN/17	TITLE Wire to Board (Wafer) Pitch 2.5mm 90° Angle (SMT)			REV 0	SHEET NO. 2/2
	DESIGN UNITS Metric	X.XX ±0.15	X.XX* ±1°	DRAWN BY LXF	DATE 06/JUN/17	THIS DRAWING CONTAINS INFORMATION THAT IS PROPRIETARY TO TXGA INDUSTRIAL ELECTRONICS(S.Z)CO.,LTD AND SHOULD NOT BE USED WITHOUT WRITTEN PERMISSION			
SCALE 5:1	SIZE A4	X.XXX ±0.10	X.XXX* ±0.5°						

1 2 3 4 5 6 7 8

## X-ON Electronics

Largest Supplier of Electrical and Electronic Components

*Click to view similar products for [Headers & Wire Housings](#) category:*

*Click to view products by [TXGA](#) manufacturer:*

Other Similar products are found below :

[0015917161](#) [0022155065](#) [57102-F02-18ULF](#) [58102-G61-06LF](#) [582553-1](#) [01.001.5753.1](#) [0050291907](#) [02.125.8002.8](#) [609-3404](#) [61062-3](#)  
[CSU011177004](#) [622-0430](#) [622-3653LF](#) [63453-116](#) [636-1030](#) [636-1427](#) [636-3427](#) [636-4007](#) [641938-9](#) [65495-038](#) [65692-001LF](#) [65781-018](#)  
[65781-047](#) [65817-010LF](#) [65817-015LF](#) [67095-007LF](#) [67601157](#) [68631-112](#) [68645-018](#) [699319-000](#) [70.362.1628.0](#) [70-4210](#) [70-4226B](#) [70-](#)  
[4853B](#) [71.350.2428.0](#) [733-134](#) [733-162](#) [760-3052](#) [MHR-64-VUAL](#) [80.063.4001.1](#) [800-90-001-10-001000](#) [801-43-002-10-013000](#)  
[801-43-006-10-002000](#) [803-43-024-10-001000](#) [803-93-012-10-001000](#) [8-1437020-4](#) [819-22-004-30-001101](#) [820-22-006-30-001101](#)  
[820-22-008-30-001101](#) [821-22-002-10-001101](#)