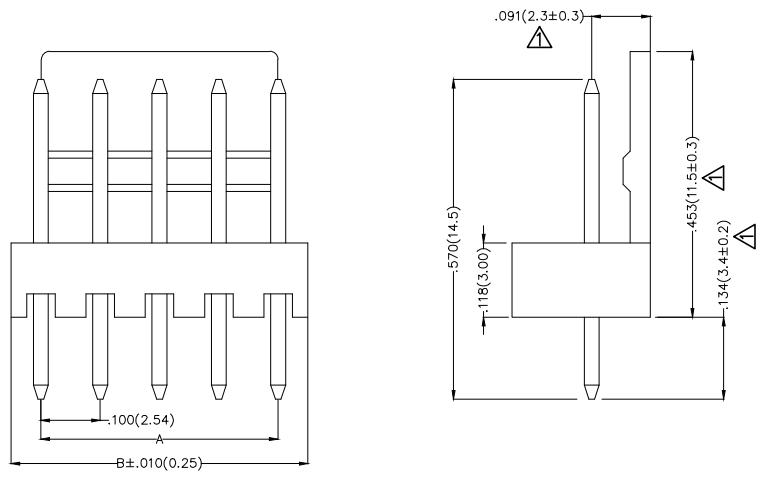
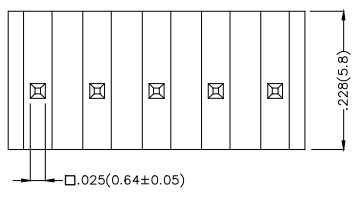


REV	LOCATIONS	DESCRIPTION	DATE	REVISER	APPD
1	△	Size changes	26/APR/21	KATE	JOHNNY



Electrical
 Current Rating: 2.5A AC(rms)/DC
 Voltage Rating: 250V AC(rms)/DC
 Contact Resistance: 20 mΩ Max
 Insulation Resistance: 1000 MΩ MIN
 Withstanding Voltage: 1000V AC r.m.s
 Temperature Range—Operating: -25°C ~ +85°C

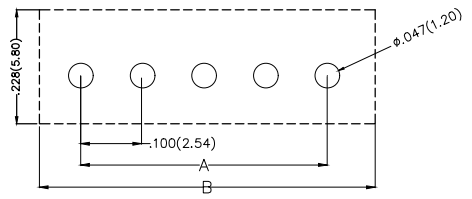
Material and Plating
 Housing: PA66(UL 94V-2)
 Contact Pin: Brass
 Plating: Tin Plated



Ordering Information

FWF 254 01 — S XX S 2 2 W1 B
 1 2 3 4 5 6 7 8 9 10

1	Category FWF—Wafer	2	Series Number 254—Pitch2.54mm	3	Distinction No. 01	4	Row Option S—Single Row	5	Circuits XX
6	Entry Angle S—180° Vertical	7	Plating 2—Tin Plated	8	Material—Resin 2—PA66	9	Color—Resin W1—White	10	Packaging B—PE Bag



Recommended P.C.Board Layout

THIRD ANGLE PROJECTION		GENERAL TOLERANCES (UNLESS SPECIFIED)		APPROVE BY	DATE	PART NO.	ITEM NO.	TXGA Leader Of Industry	
DESIGN UNITS	SIZE	X.±.012(0.30)	X.±5°	FRANK	8/JUL/13	FWF25401-SXXS22W1B	FWF25401	REV 1	SHEET NO. 1/2
Inch (metric)	A4	X.X±.008(0.20)	.X±2°	JACOB	8/JUL/13	TITLE Wire to Board (Wafer) Pitch 2.54mm 180° Vertical (DIP)		THIS DRAWING CONTAINS INFORMATION THAT IS PROPRIETARY TO TXGA INDUSTRIAL ELECTRONICS(S.Z)CO.,LTD AND SHOULD NOT BE USED WITHOUT WRITTEN PERMISSION	
SCALE	SIZE	X.XX±.006(0.15)	.XX±1°	DRAWN BY	DATE				
5:1	A4	X.XXX±.004(0.10)	.XXX±0.5°	CHERRY	8/JUL/13				

1 2 3 4 5 6 7 8

REV	LOCATIONS	DESCRIPTION	DATE	REVISER	APPD

A

F

B

E

C

C

D

D

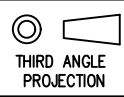

E

E

F

F

Circuits (n)	Part No.	Dimensions(in/mm)	
		A	B
2	FWF25401-S02S22W1B	.100(2.54)	.200(5.08)
3	FWF25401-S03S22W1B	.200(5.08)	.300(7.62)
4	FWF25401-S04S22W1B	.300(7.62)	.400(10.16)
5	FWF25401-S05S22W1B	.400(10.16)	.500(12.70)
6	FWF25401-S06S22W1B	.500(12.70)	.600(15.24)
7	FWF25401-S07S22W1B	.600(15.24)	.700(17.78)
8	FWF25401-S08S22W1B	.700(17.78)	.800(20.32)
9	FWF25401-S09S22W1B	.800(20.32)	.900(22.86)
10	FWF25401-S10S22W1B	.900(22.86)	1.000(25.40)
11	FWF25401-S11S22W1B	1.000(25.40)	1.100(27.94)
12	FWF25401-S12S22W1B	1.100(27.94)	1.200(30.48)
13	FWF25401-S13S22W1B	1.200(30.48)	1.300(33.02)
14	FWF25401-S14S22W1B	1.300(33.02)	1.400(35.56)
15	FWF25401-S15S22W1B	1.400(35.56)	1.500(38.10)
16	FWF25401-S16S22W1B	1.500(38.10)	1.600(40.64)

 THIRD ANGLE PROJECTION	GENERAL TOLERANCES (UNLESS SPECIFIED)		APPROVE BY FRANK	DATE 8/JUL/13	PART NO. FWF25401-SXXS22W1B	ITEM NO. FWF25401	 Leader Of Industry	
	X.±.012(0.30)	X.±5°	CHECKED BY JACOB	DATE 8/JUL/13	TITLE Wire to Board (Wafer) Pitch 2.54mm 180° Vertical (DIP)			REV 1
	DESIGN UNITS Inch (metric)	X.X±.008(0.20)	.X±2°	DRAWN BY CHERRY	DATE 8/JUL/13	THIS DRAWING CONTAINS INFORMATION THAT IS PROPRIETARY TO TXGA INDUSTRIAL ELECTRONICS(S.Z)CO.,LTD AND SHOULD NOT BE USED WITHOUT WRITTEN PERMISSION		
SCALE 5:1	SIZE A4	X.XX±.006(0.15)	.XX±1°					
		X.XXX±.004(0.10)	.XXX±0.5°					

1 2 3 4 5 6 7 8

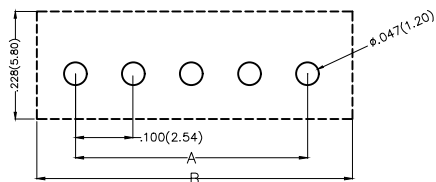
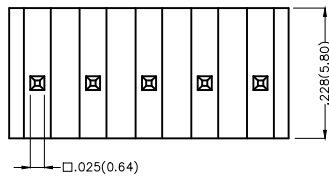
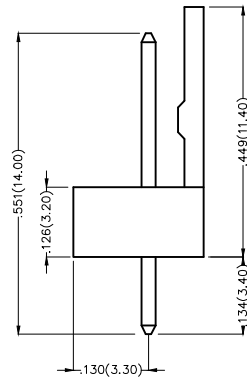
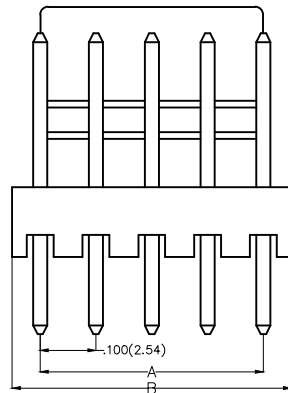
REV	LOCATIONS	DESCRIPTION	DATE	REVISER	APPD

Electrical

Current Rating: 2.5A AC(rms)/DC
Voltage Rating: 250V AC(rms)/DC
Contact Resistance: 20 mΩ Max
Insulation Resistance: 1000 MΩ MIN
Withstanding Voltage: 1000V AC r.m.s
Temperature Range—Operating: -25°C ~ +85°C

Material and Plating

Housing: PA66(UL 94V-2)
Contact Pin: Brass
Plating: Tin Plated



Recommended P.C.Board Layout

Ordering Information



FWF 254 01 — S XX S 2 2 W5 B
1 2 3 4 5 6 7 8 9 10

1	Category FWF—Wafer	2	Series Number 254—Pitch2.54mm	3	Distinction No. 01	4	Row Option Single Row	5	Circuits XX	6	Entry Angle S-180° Vertical
7	Plating 2—Tin Plated	8	Material—Resin 2—PA66	9	Color—Resin W5—Natural	10	Packaging B—PE Bag				

 THIRD ANGLE PROJECTION	GENERAL TOLERANCES (UNLESS SPECIFIED)		APPROVE BY FRANK	DATE 8/JUL/13	PART NO. FWF25401—SXXS22W5B	ITEM NO. FWF25401	 Leader Of Industry	
	DESIGN UNITS Inch (metric)	X.X±.012(0.30) X.XX±.008(0.20)	X.±5° .X'±2°	CHECKED BY JACOB	DATE 8/JUL/13	TITLE Wire to Board (Wafer) Pitch 2.54mm 180° Vertical (DIP)		REV 0
SCALE 5:1	SIZE A4	X.XX±.006(0.15) X.XXX±.004(0.10)	.XX'±1° .XXX'±0.5°	DRAWN BY CHERRY	DATE 8/JUL/13	THIS DRAWING CONTAINS INFORMATION THAT IS PROPRIETARY TO TXGA INDUSTRIAL ELECTRONICS(S.Z.)CO.,LTD AND SHOULD NOT BE USED WITHOUT WRITTEN PERMISSION		

REV	LOCATIONS	DESCRIPTION	DATE	REVISER	APPD

Circuits (n)	Part No.	Dimensions(in/mm)	
		A	B
2	FWF25401-S02S22W5B	.100(2.54)	.200(5.08)
3	FWF25401-S03S22W5B	.200(5.08)	.300(7.62)
4	FWF25401-S04S22W5B	.300(7.62)	.400(10.16)
5	FWF25401-S05S22W5B	.400(10.16)	.500(12.70)
6	FWF25401-S06S22W5B	.500(12.70)	.600(15.24)
7	FWF25401-S07S22W5B	.600(15.24)	.700(17.78)
8	FWF25401-S08S22W5B	.700(17.78)	.800(20.32)
9	FWF25401-S09S22W5B	.800(20.32)	.900(22.86)
10	FWF25401-S10S22W5B	.900(22.86)	1.000(25.40)
11	FWF25401-S11S22W5B	1.000(25.40)	1.100(27.94)
12	FWF25401-S12S22W5B	1.100(27.94)	1.200(30.48)

 THIRD ANGLE PROJECTION	GENERAL TOLERANCES (UNLESS SPECIFIED)		APPROVE BY	DATE	PART NO.	ITEM NO.	 Leader Of Industry
	X.±.012(0.30)	X.±5'	FRANK	8/JUL/13	FWF25401-SXXS22W5B	FWF25401	
DESIGN UNITS Inch (metric)	X.XX±.008(0.20)	.X'±2'	CHECKED BY	DATE	TITLE		REV 0
SCALE	X.XX±.006(0.15)	.XX'±1'	JACOB	8/JUL/13	Wire to Board (Wafer) Pitch 2.54mm 180° Vertical (DIP)		
5:1	X.XXX±.004(0.10)	.XXX'±0.5'	DRAWN BY	DATE	THIS DRAWING CONTAINS INFORMATION THAT IS PROPRIETARY TO TXGA INDUSTRIAL ELECTRONICS(S.Z)CO.,LTD AND SHOULD NOT BE USED WITHOUT WRITTEN PERMISSION		SHEET NO.2/2
SIZE			CHERRY	8/JUL/13			

X-ON Electronics

Largest Supplier of Electrical and Electronic Components

Click to view similar products for [Headers & Wire Housings](#) category:

Click to view products by [TXGA](#) manufacturer:

Other Similar products are found below :

[0015917161](#) [0022155065](#) [57102-F02-18ULF](#) [58102-G61-06LF](#) [582553-1](#) [01.001.5753.1](#) [0050291907](#) [02.125.8002.8](#) [609-3404](#) [61062-3](#)
[CSU011177004](#) [622-0430](#) [622-3653LF](#) [63453-116](#) [636-1030](#) [636-1427](#) [636-3427](#) [636-4007](#) [641938-9](#) [65495-038](#) [65692-001LF](#) [65781-018](#)
[65781-047](#) [65817-010LF](#) [65817-015LF](#) [67095-007LF](#) [67601157](#) [68631-112](#) [68645-018](#) [699319-000](#) [70.362.1628.0](#) [70-4210](#) [70-4226B](#) [70-](#)
[4853B](#) [71.350.2428.0](#) [733-134](#) [733-162](#) [760-3052](#) [MHR-64-VUAL](#) [80.063.4001.1](#) [800-90-001-10-001000](#) [801-43-002-10-013000](#)
[801-43-006-10-002000](#) [803-43-024-10-001000](#) [803-93-012-10-001000](#) [8-1437020-4](#) [819-22-004-30-001101](#) [820-22-006-30-001101](#)
[820-22-008-30-001101](#) [821-22-002-10-001101](#)