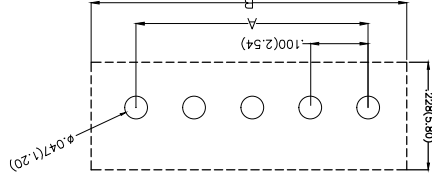
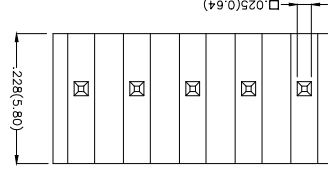
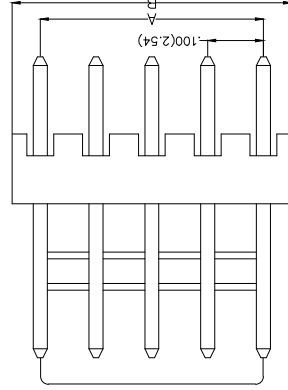
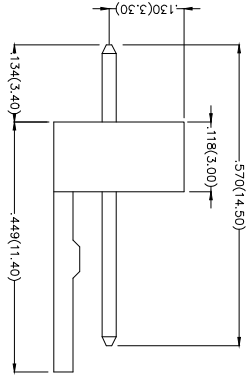


REV	LOCATIONS	DESCRIPTION	DATE	REVISER	APPD

Electrical
 Current Rating: 2.5A AC(rms)/DC
 Voltage Rating: 250V AC(rms)/DC
 Contact Resistance: 20 mΩ Max
 Insulation Resistance: 1000 MΩ MIN
 Withstanding Voltage: 1000V AC r.m.s
 Temperature Range-Operating: -25°C~+85°C
 Material and Plating
 Housing: PA66(UL 94V-2)
 Contact Pin: Brass
 Plating: Tin Plated



Recommended P.C. Board Layout

THIRD ANGLE PROJECTION	DESIGN UNITS Inch (metric)	SCALE 5:1 A4
------------------------	----------------------------	--------------

GENERAL TOLERANCES (UNLESS SPECIFIED)	CHECKED BY X.F5	DATE 8/JUL/13
APPROVE BY FRANK	DRAWN BY JACOB	DATE 8/JUL/13
CHERRY	DATE 8/JUL/13	THIS DRAWING CONTAINS INFORMATION THAT IS PROPRIETARY TO TXGA INDUSTRIAL ELECTRONICS(SZ)CO.,LTD AND SHOULD NOT BE USED WITHOUT WRITTEN PERMISSION

1	Category	2	Series Number	3	Distinction No.	4	Row Option	5	Circuits
1	FWF-Water	2	254-Pitch2.54mm	3	01	4	S-Single Row	5	XX

6	Entry Angle	7	Plating	8	Material-Resin	9	Color-Resin	10	Packaging
6	S-180° Vertical	7	Z-Tin Plated	8	2-PA66	9	W1-White	10	B-PE Bag

Ordering Information

FWF 254 01 - S	XX S	2	W1 B
254 01	2	2	2
1	2	3	4
5	6	7	8
9	10	10	10




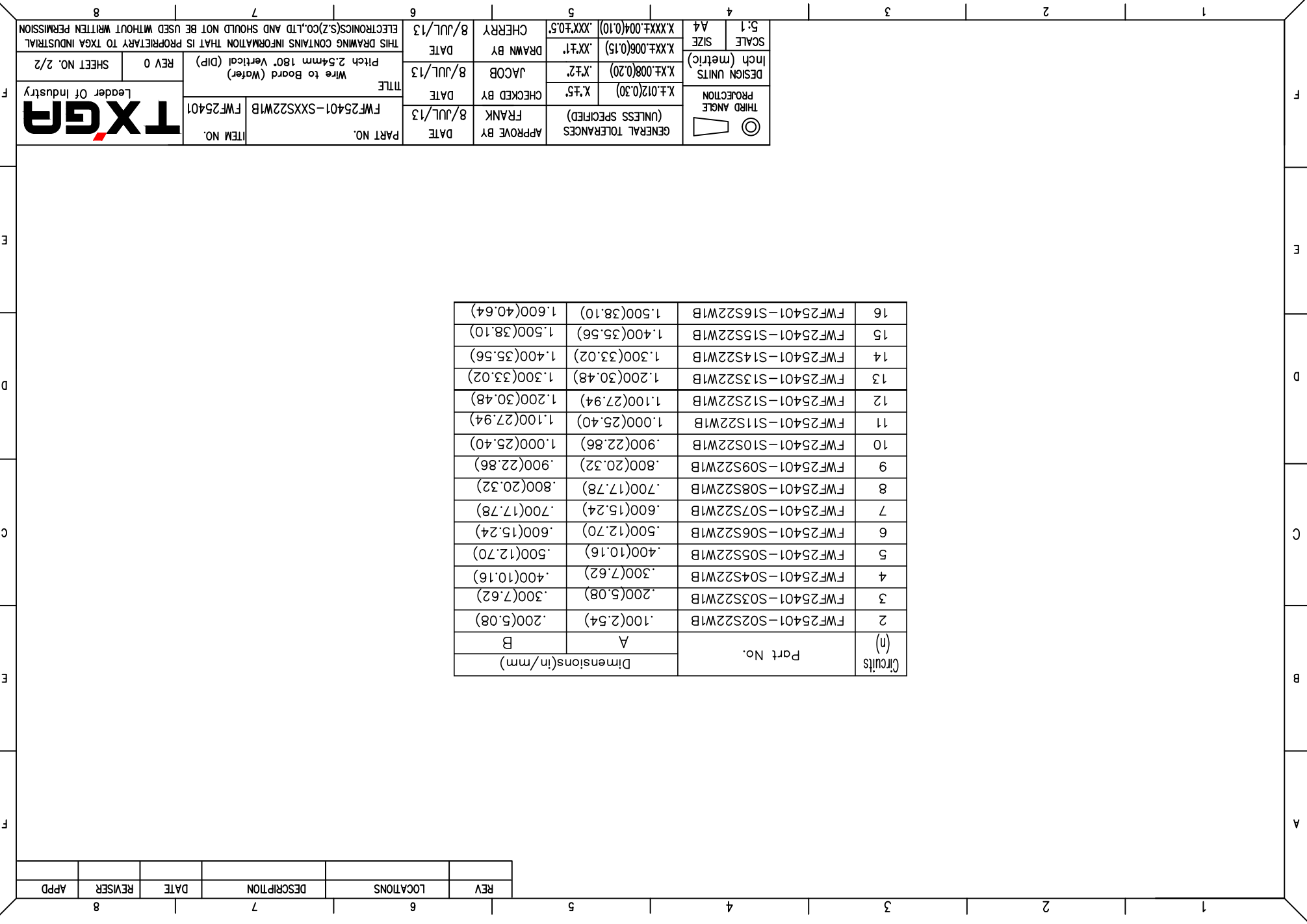
PART NO.	ITEM NO.	TITLE
FWF25401-SXXS22WB	FWF25401	Wire to Board (Water) Pitch 2.54mm 180° Vertical (DIP)
DATE 8/JUL/13	CHECKED BY X.F5	DATE 8/JUL/13
APPROVE BY FRANK	DRAWN BY JACOB	DATE 8/JUL/13
CHERRY	DATE 8/JUL/13	THIS DRAWING CONTAINS INFORMATION THAT IS PROPRIETARY TO TXGA INDUSTRIAL ELECTRONICS(SZ)CO.,LTD AND SHOULD NOT BE USED WITHOUT WRITTEN PERMISSION

REV 0	SHEET NO. 1/2
-------	---------------

REV	LOCATIONS	DESCRIPTION	DATE	REVISER	APPD

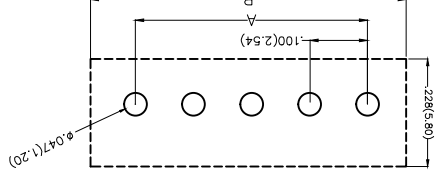
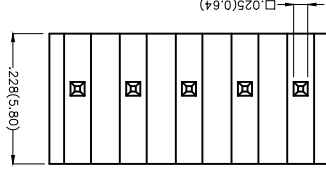
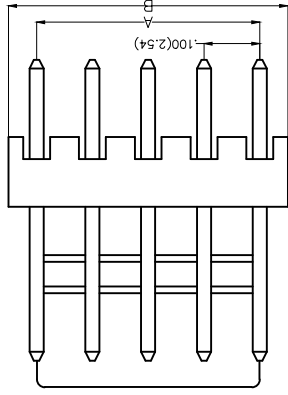
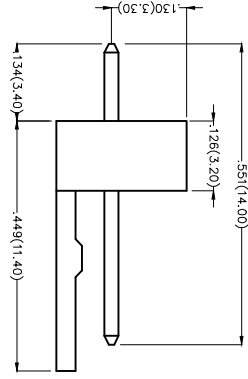
Circuits (n)	Part No.	Dimensions(in/mm)	
		A	B
2	FWF25401-S02S22W1B	.100(2.54)	.200(5.08)
3	FWF25401-S03S22W1B	.200(5.08)	.300(7.62)
4	FWF25401-S04S22W1B	.300(7.62)	.400(10.16)
5	FWF25401-S05S22W1B	.400(10.16)	.500(12.70)
6	FWF25401-S06S22W1B	.500(12.70)	.600(15.24)
7	FWF25401-S07S22W1B	.600(15.24)	.700(17.78)
8	FWF25401-S08S22W1B	.700(17.78)	.800(20.32)
9	FWF25401-S09S22W1B	.800(20.32)	.900(22.86)
10	FWF25401-S10S22W1B	.900(22.86)	1.000(25.40)
11	FWF25401-S11S22W1B	1.000(25.40)	1.100(27.94)
12	FWF25401-S12S22W1B	1.100(27.94)	1.200(30.48)
13	FWF25401-S13S22W1B	1.200(30.48)	1.300(33.02)
14	FWF25401-S14S22W1B	1.300(33.02)	1.400(35.56)
15	FWF25401-S15S22W1B	1.400(35.56)	1.500(38.10)
16	FWF25401-S16S22W1B	1.500(38.10)	1.600(40.64)

 THIRD ANGLE PROJECTION	DESIGN UNITS	X.±.012(0.30)	CHECKED BY	FRANK	DATE	8/JUL/13	APPROVE BY	FRANK	DATE	8/JUL/13	PART NO.	FWF25401-SXXS22W1B	ITEM NO.	FWF25401
	Inch (metric)	X.±.008(0.20)	JACOB	DATE	8/JUL/13	TITLE	Wire to Board (Water) Pitch 2.54mm 180° Vertical (DIP)	DRAWN BY	JACOB	DATE	8/JUL/13	THIS DRAWING CONTAINS INFORMATION THAT IS PROPRIETARY TO TXGA INDUSTRIAL ELECTRONICS(SZ)CO.,LTD AND SHOULD NOT BE USED WITHOUT WRITTEN PERMISSION	REV 0	SHEET NO. 2/2
SCALE	SIZE	5:1 A4	GENERAL TOLERANCES (UNLESS SPECIFIED)	X.±.5	CHERRY	8/JUL/13								



REV	LOCATIONS	DESCRIPTION	DATE	REVISER	APPD

Electrical
 Current Rating: 2.5A AC(rms)/DC
 Voltage Rating: 250V AC(rms)/DC
 Contact Resistance: 20 mΩ Max
 Insulation Resistance: 1000 MΩ MIN
 Withstanding Voltage: 1000V AC r.m.s
 Temperature Range—Operating: -25°C~+85°C
 Material and Plating
 Housing: PA66(UL 94V-2)
 Contact Pin: Brass
 Plating: Tin Plated



Recommended P.C.Board Layout

Ordering Information

FWF 254 01 - S XX S 2 2 W5 B
 1 2 3 4 5 6 7 8 9 10


- 1 Category | FWF-Water
- 2 Series Number | 254-Pitch 2.54mm
- 3 Distinction No. | 01
- 4 Row Option | Single Row
- 5 Circuits | XX
- 6 Entry Angle | S-180° Vertical
- 7 Plating | 2-Tin Plated
- 8 Material-Resin | 2-PA66
- 9 Color-Resin | W5-Natural
- 10 Packaging | B-PE Bag

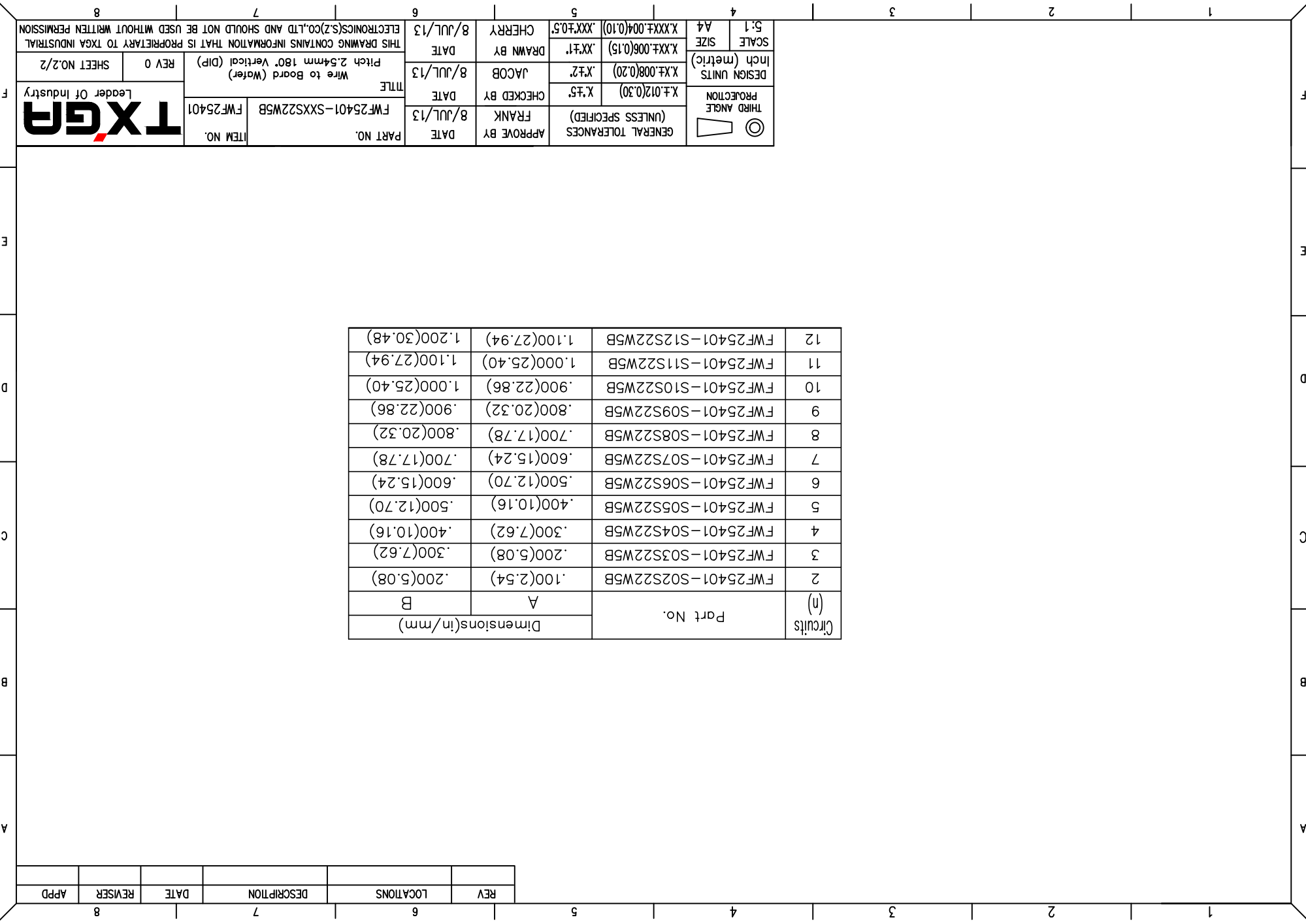
THIRD ANGLE PROJECTION	DESIGN UNITS Inch (metric)	SCALE 5:1 A4	GENERAL TOLERANCES (UNLESS SPECIFIED)	APPROVE BY FRANK	DATE 8/JUL/13	PART NO. FWF25401-SXXS22W5B	ITEM NO.
⊙	X.±.008(0.20) X.±.006(0.15) X.±.004(0.10)	X.±.008(0.20) X.±.006(0.15) X.±.004(0.10)	X.±.012(0.30) X.±.010(0.25) X.±.008(0.20)	CHECKED BY JACOB	DATE 8/JUL/13	TITLE Wire to Board (Water) Pitch 2.54mm 180° Vertical (DIP)	REV 0
				DRAWN BY CHERRY	DATE 8/JUL/13	THIS DRAWING CONTAINS INFORMATION THAT IS PROPRIETARY TO TXGA INDUSTRIAL ELECTRONICS(SZ)CO.,LTD AND SHOULD NOT BE USED WITHOUT WRITTEN PERMISSION	



REV	LOCATIONS	DESCRIPTION	DATE	REVISER	APPD

Circuits (n)	Part No.	Dimensions(in/mm)	
		A	B
2	FWF25401-S02S22W5B	.100(2.54)	.200(5.08)
3	FWF25401-S03S22W5B	.200(5.08)	.300(7.62)
4	FWF25401-S04S22W5B	.300(7.62)	.400(10.16)
5	FWF25401-S05S22W5B	.400(10.16)	.500(12.70)
6	FWF25401-S06S22W5B	.500(12.70)	.600(15.24)
7	FWF25401-S07S22W5B	.600(15.24)	.700(17.78)
8	FWF25401-S08S22W5B	.700(17.78)	.800(20.32)
9	FWF25401-S09S22W5B	.800(20.32)	.900(22.86)
10	FWF25401-S10S22W5B	.900(22.86)	1.000(25.40)
11	FWF25401-S11S22W5B	1.000(25.40)	1.100(27.94)
12	FWF25401-S12S22W5B	1.100(27.94)	1.200(30.48)

 THIRD ANGLE PROJECTION	DESIGN UNITS	X.±.012(0.30)	CHECKED BY	FRANK	DATE	8/JUL/13	APPROVE BY	FRANK	DATE	8/JUL/13	PART NO. FWF25401-SXXS22W5B ITEM NO. FWF25401	TXGA Leader Of Industry	THIS DRAWING CONTAINS INFORMATION THAT IS PROPRIETARY TO TXGA INDUSTRIAL ELECTRONICS(SZ)CO.,LTD AND SHOULD NOT BE USED WITHOUT WRITTEN PERMISSION
	INCH (metric) SCALE SIZE 5:1 A4	X.±.008(0.20) X.±.1 X.XX±.004(0.10)	X.±.2 X.±.1 X.XX±.05	JACOB DRAWN BY CHERRY	X.±.2 X.±.1 X.XX±.05	8/JUL/13 DATE 8/JUL/13	WIRE TO BOARD (Water) Pitch 2.54mm 180° Vertical (DIP)	REV 0 SHEET NO.2/2					



X-ON Electronics

Largest Supplier of Electrical and Electronic Components

Click to view similar products for [Headers & Wire Housings](#) category:

Click to view products by [TXGA](#) manufacturer:

Other Similar products are found below :

[95000-104TRLF](#) [10135584-644402LF](#) [DF62W-EP2022PCA](#) [95000-106TRLF](#) [DF62W-2022SCA](#) [DF62W-EP2022PC](#) [2203348](#) [DF62W-2022SC](#) [1084018](#) [1029039](#) [1084017](#) [802-10-012-10-002000](#) [1112640](#) [1112639](#) [891-007-9SS-BST1T](#) [000-34000](#) [0008550134](#) [0009482033](#) [0009507031](#) [57102-F02-18ULF](#) [57102-S06-03LF](#) [57202-S52-04LF](#) [PCN6-15S-2.5E](#) [0039019024](#) [58102-G61-06LF](#) [582553-1](#) [0009485154](#) [0009508121](#) [0022285053](#) [0050291907](#) [018731A](#) [LY20-4P-DT1-P1E-BR](#) [02.125.8002.8](#) [60101931](#) [60598-1 \(Cut Strip\)](#) [M1625-3R/100](#) [61062-3](#) [61082-181009](#) [CSU011177004](#) [636-1427](#) [638009-1](#) [641938-9](#) [641991-4](#) [644168-1](#) [644827-2](#) [647662-1](#) [65039-019ELF](#) [65692-001LF](#) [65781-018](#) [65781-047](#)