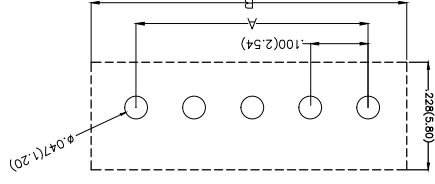
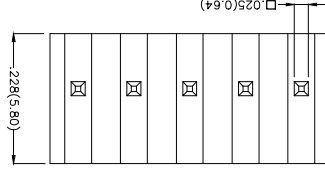
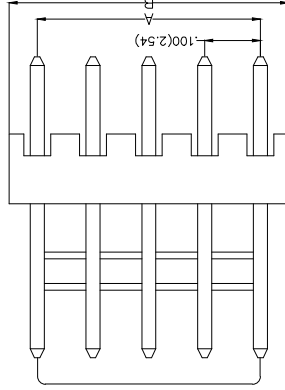
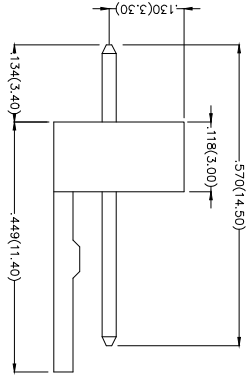


REV	LOCATIONS	DESCRIPTION	DATE	REVISER	APPD

Electrical
 Current Rating: 2.5A AC(rms)/DC
 Voltage Rating: 250V AC(rms)/DC
 Contact Resistance: 20 mΩ Max
 Insulation Resistance: 1000 MΩ MIN
 Withstanding Voltage: 1000V AC r.m.s
 Temperature Range-Operating: -25°C~+85°C
 Material and Plating
 Housing: PA66(UL 94V-2)
 Contact Pin: Brass
 Plating: Tin Plated



Recommended P.C. Board Layout

THIRD ANGLE PROJECTION	DESIGN UNITS Inch (metric)	SCALE 5:1 A4
------------------------	----------------------------	--------------

GENERAL TOLERANCES (UNLESS SPECIFIED)	CHECKED BY X.±5	DATE 8/JUL/13
APPROVE BY FRANK	DRAWN BY JACOB	DATE 8/JUL/13
	CHERRY	DATE 8/JUL/13

PART NO. FWF25401-SXXS22WB	ITEM NO. FWF25401	TITLE Wire to Board (Water) Pitch 2.54mm 180° Vertical (DIP)
REV 0	SHEET NO. 1/2	

TXGR
 Leader Of Industry

1	Category	2	Series Number	3	Distinction No.	4	Row Option	5	Circuits
6	Entry Angle	7	Plating	8	Material-Resin	9	Color-Resin	10	Packaging

FWF 254 01 - S XX S 2 2 W1 B
 1 2 3 4 5 6 7 8 9 10

Ordering Information

E

D

C

E

F

F

E

D

C

B

A

3

2

1

8

7


6

5

4

REV	LOCATIONS	DESCRIPTION	DATE	REVISER	APPD

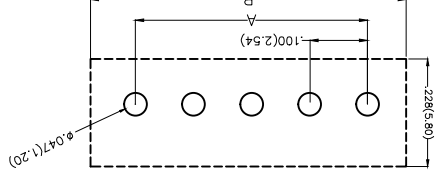
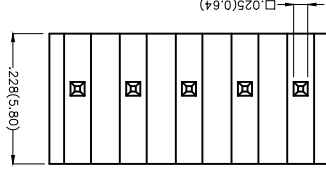
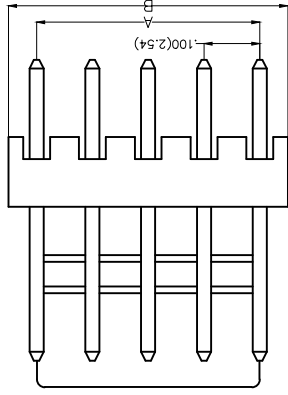
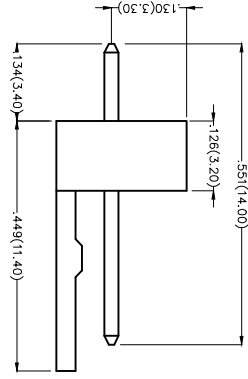
Circuits (n)	Part No.	Dimensions(in/mm)	
		A	B
2	FWF25401-S02S22W1B	.100(2.54)	.200(5.08)
3	FWF25401-S03S22W1B	.200(5.08)	.300(7.62)
4	FWF25401-S04S22W1B	.300(7.62)	.400(10.16)
5	FWF25401-S05S22W1B	.400(10.16)	.500(12.70)
6	FWF25401-S06S22W1B	.500(12.70)	.600(15.24)
7	FWF25401-S07S22W1B	.600(15.24)	.700(17.78)
8	FWF25401-S08S22W1B	.700(17.78)	.800(20.32)
9	FWF25401-S09S22W1B	.800(20.32)	.900(22.86)
10	FWF25401-S10S22W1B	.900(22.86)	1.000(25.40)
11	FWF25401-S11S22W1B	1.000(25.40)	1.100(27.94)
12	FWF25401-S12S22W1B	1.100(27.94)	1.200(30.48)
13	FWF25401-S13S22W1B	1.200(30.48)	1.300(33.02)
14	FWF25401-S14S22W1B	1.300(33.02)	1.400(35.56)
15	FWF25401-S15S22W1B	1.400(35.56)	1.500(38.10)
16	FWF25401-S16S22W1B	1.500(38.10)	1.600(40.64)

 THIRD ANGLE PROJECTION	DESIGN UNITS	X.±.012(0.30)	CHECKED BY	FRANK	DATE	8/JUL/13	APPROVE BY	FRANK	DATE	8/JUL/13	GENERAL TOLERANCES (UNLESS SPECIFIED)
	Inch (metric)	X.±.008(0.20)	JACOB	DATE	8/JUL/13	DRAWN BY CHERRY	DATE	8/JUL/13	THIS DRAWING CONTAINS INFORMATION THAT IS PROPRIETARY TO TXGA INDUSTRIAL ELECTRONICS(SZ)CO.,LTD AND SHOULD NOT BE USED WITHOUT WRITTEN PERMISSION		
SCALE	SIZE	A4	TITLE FWF25401-SXXS22W1B ITEM NO.								
DESIGN UNITS Inch (metric)		X.±.006(0.15)	WIRE TO BOARD (Water) Pitch 2.54mm 180° Vertical (DIP)		PART NO. FWF25401		TITLE FWF25401-SXXS22W1B		REV 0 SHEET NO. 2/2		TXGA Leader Of Industry

REV	LOCATIONS	DESCRIPTION	DATE	REVISER	APPD

Electrical

Current Rating: 2.5A AC(rms)/DC
Voltage Rating: 250V AC(rms)/DC
Contact Resistance: 20 mΩ Max
Insulation Resistance: 1000 MΩ MIN
Withstanding Voltage: 1000V AC r.m.s
Temperature Range—Operating: -25°C~+85°C
Material and Plating
Housing: PA66(UL 94V-2)
Contact Pin: Brass
Plating: Tin Plated



Recommended P.C.Board Layout

Ordering Information

FWF 254 01 - S XX S 2 2 W5 B
1 2 3 4 5 6 7 8 9 10

- 1 Category | FWF-Water
- 2 Series Number | 254-Pitch2.54mm
- 3 Distinction No. | 01
- 4 Row Option | Single Row
- 5 Circuits | XX
- 6 Entry Angle | S-180° Vertical
- 7 Plating | 2-Tin Plated
- 8 Material-Resin | 2-PA66
- 9 Color-Resin | W5-Natural
- 10 Packaging | B-PE Bag

THIRD ANGLE	PROJECTION	X.±.012(0.30)	X.±.7	8/JUL/13	DATE	FRANK	APPROVE BY	GENERAL TOLERANCES (UNLESS SPECIFIED)
DESIGN UNITS Inch (metric)	X.XX±.008(0.20)	X.±.2	JACOB	8/JUL/13	DATE	JACOB	CHECKED BY	
SCALE	A4	X.XX±.006(0.15)	X.±.1	DATE	8/JUL/13	CHERRY	DRAWN BY	
5:1	X.XX±.004(0.10)	.XXX±.05						




ITEM NO. FWF25401
PART NO. FWF25401-SXXS22W5B

THIS DRAWING CONTAINS INFORMATION THAT IS PROPRIETARY TO TXGA INDUSTRIAL ELECTRONICS(SZ)CO.,LTD AND SHOULD NOT BE USED WITHOUT WRITTEN PERMISSION

REV	LOCATIONS	DESCRIPTION	DATE	REVISER	APPD

Circuits (n)	Part No.	Dimensions(in/mm)	
		A	B
2	FWF25401-S02S22W5B	.100(2.54)	.200(5.08)
3	FWF25401-S03S22W5B	.200(5.08)	.300(7.62)
4	FWF25401-S04S22W5B	.300(7.62)	.400(10.16)
5	FWF25401-S05S22W5B	.400(10.16)	.500(12.70)
6	FWF25401-S06S22W5B	.500(12.70)	.600(15.24)
7	FWF25401-S07S22W5B	.600(15.24)	.700(17.78)
8	FWF25401-S08S22W5B	.700(17.78)	.800(20.32)
9	FWF25401-S09S22W5B	.800(20.32)	.900(22.86)
10	FWF25401-S10S22W5B	.900(22.86)	1.000(25.40)
11	FWF25401-S11S22W5B	1.000(25.40)	1.100(27.94)
12	FWF25401-S12S22W5B	1.100(27.94)	1.200(30.48)

 THIRD ANGLE PROJECTION	DESIGN UNITS	X.±.012(0.30)	CHECKED BY	FRANK	DATE	8/JUL/13	APPROVE BY	FRANK	DATE	8/JUL/13	PART NO. FWF25401-SXXS22W5B ITEM NO. FWF25401	TXGA Leader Of Industry	THIS DRAWING CONTAINS INFORMATION THAT IS PROPRIETARY TO TXGA INDUSTRIAL ELECTRONICS(SZ)CO.,LTD AND SHOULD NOT BE USED WITHOUT WRITTEN PERMISSION
	SCALE	5:1	DRAWN BY	JACOB	DATE	8/JUL/13	CHERRY	DATE	8/JUL/13				
DESIGN UNITS	Inch (metric)	X.±.008(0.20)	CHECKED BY	JACOB	DATE	8/JUL/13	CHERRY	DATE	8/JUL/13	REV	REV 0	SHEET NO.2/2	
SCALE	SIZE	X.±.006(0.15)	DRAWN BY	JACOB	DATE	8/JUL/13	CHERRY	DATE	8/JUL/13	REV	REV 0	SHEET NO.2/2	THIS DRAWING CONTAINS INFORMATION THAT IS PROPRIETARY TO TXGA INDUSTRIAL ELECTRONICS(SZ)CO.,LTD AND SHOULD NOT BE USED WITHOUT WRITTEN PERMISSION

X-ON Electronics

Largest Supplier of Electrical and Electronic Components

Click to view similar products for [Headers & Wire Housings](#) category:

Click to view products by [TXGA](#) manufacturer:

Other Similar products are found below :

[95000-104TRLF](#) [10135584-644402LF](#) [DF62W-EP2022PCA](#) [95000-106TRLF](#) [DF62W-2022SCA](#) [DF62W-EP2022PC](#) [2203348](#) [DF62W-2022SC](#) [1084018](#) [1029039](#) [1084017](#) [802-10-012-10-002000](#) [1112640](#) [1112639](#) [891-007-9SS-BST1T](#) [000-34000](#) [0008550134](#) [0009482033](#) [0009507031](#) [57102-F02-18ULF](#) [57102-S06-03LF](#) [57202-S52-04LF](#) [PCN6-15S-2.5E](#) [0039019024](#) [58102-G61-06LF](#) [582553-1](#) [0009485154](#) [0009508121](#) [0022285053](#) [0050291907](#) [018731A](#) [LY20-4P-DT1-P1E-BR](#) [02.125.8002.8](#) [60101931](#) [60598-1 \(Cut Strip\)](#) [M1625-3R/100](#) [61062-3](#) [61082-181009](#) [CSU011177004](#) [636-1427](#) [638009-1](#) [641938-9](#) [641991-4](#) [644168-1](#) [644827-2](#) [647662-1](#) [65039-019ELF](#) [65692-001LF](#) [65781-018](#) [65781-047](#)